



2025 DEMOGRAPHICS

3 Mile | 5 Miles | 10 Miles



Population

12,724 | 18,142 | 37,226



Daytime Population

5,767 | 7,580 | 15,279

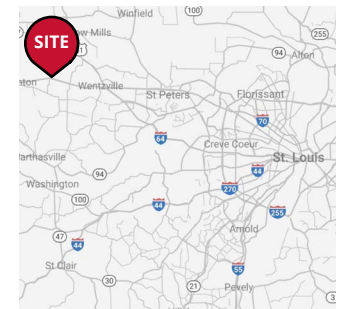


Median Household Income

\$67,285 | \$72,339 | \$82,755

RETAIL FOR LEASE

Warren County Shopping Center
 500 Warren County Center | Warrenton, Missouri 63383
 1,500 - 5,000 SF | \$18.00/SF, NNN
 Triple Nets: \$7.55/SF (2026 estimate)



PROPERTY DETAILS

Directly in front of Walmart
 Immediate access to I-70
 I-70: 46,890 VPD
 Highway 47: 10,672 VPD

Connor Wiemann

314.785.7627 | cwiemann@paceproperties.com

Evan Barnett

314.785.7678 | ebarnett@paceproperties.com

Patrick Willett

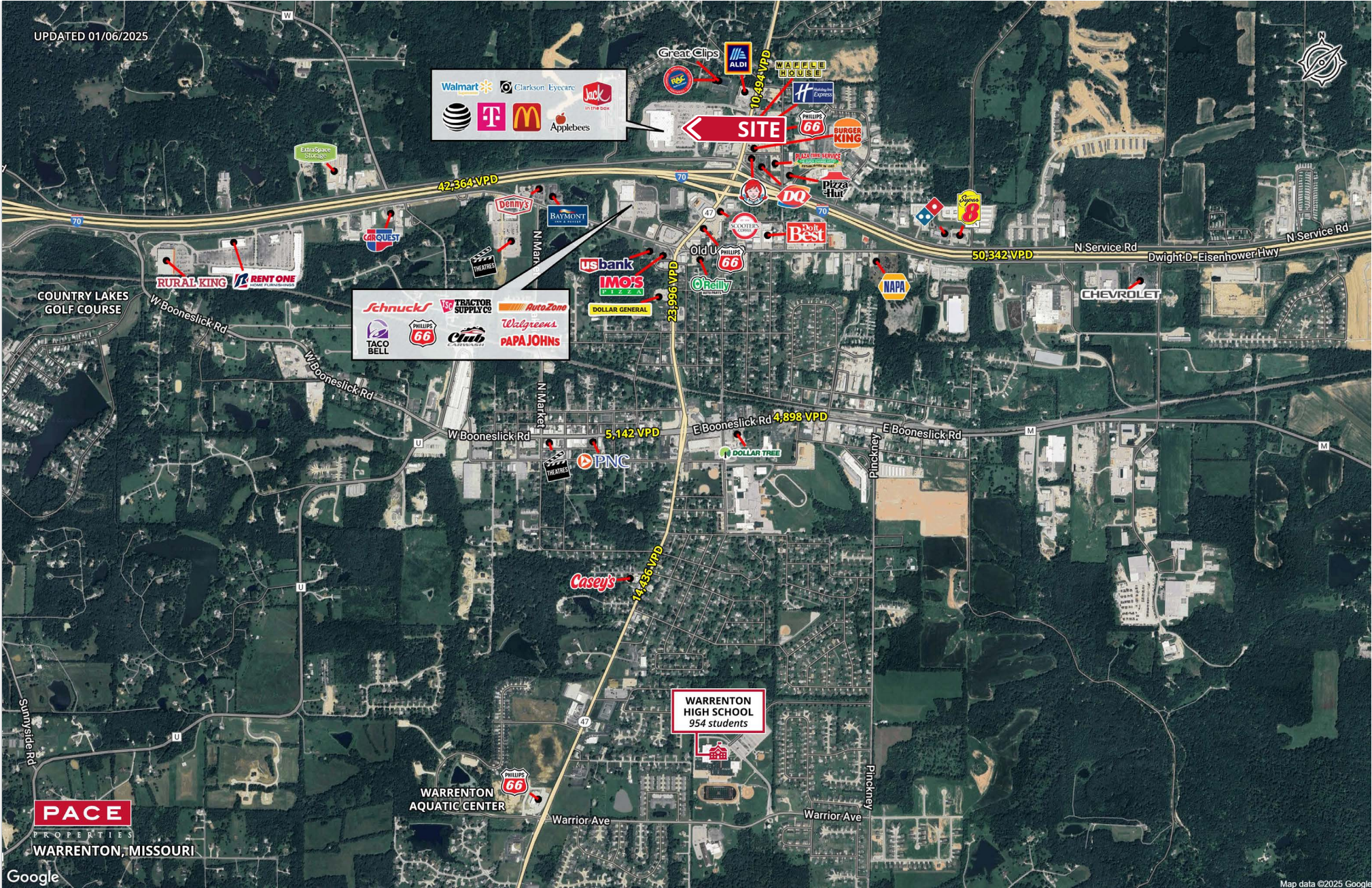
314.785.7631 | pwillett@paceproperties.com

PACEPROPERTIES.COM | 314.968.9898

1401 South Brentwood Boulevard, Suite 900 | St. Louis, Missouri 63144

The information contained herein is not warranted, although it has been obtained from the owner/landlord of the subject property or from other sources that Pace Properties, Inc. deems reliable, and is subject to change without notice. Owner/landlord and Pace Properties, Inc. make no representations as to the environmental condition of the subject property and recommend tenant's independent investigation.

Trade Area Aerial

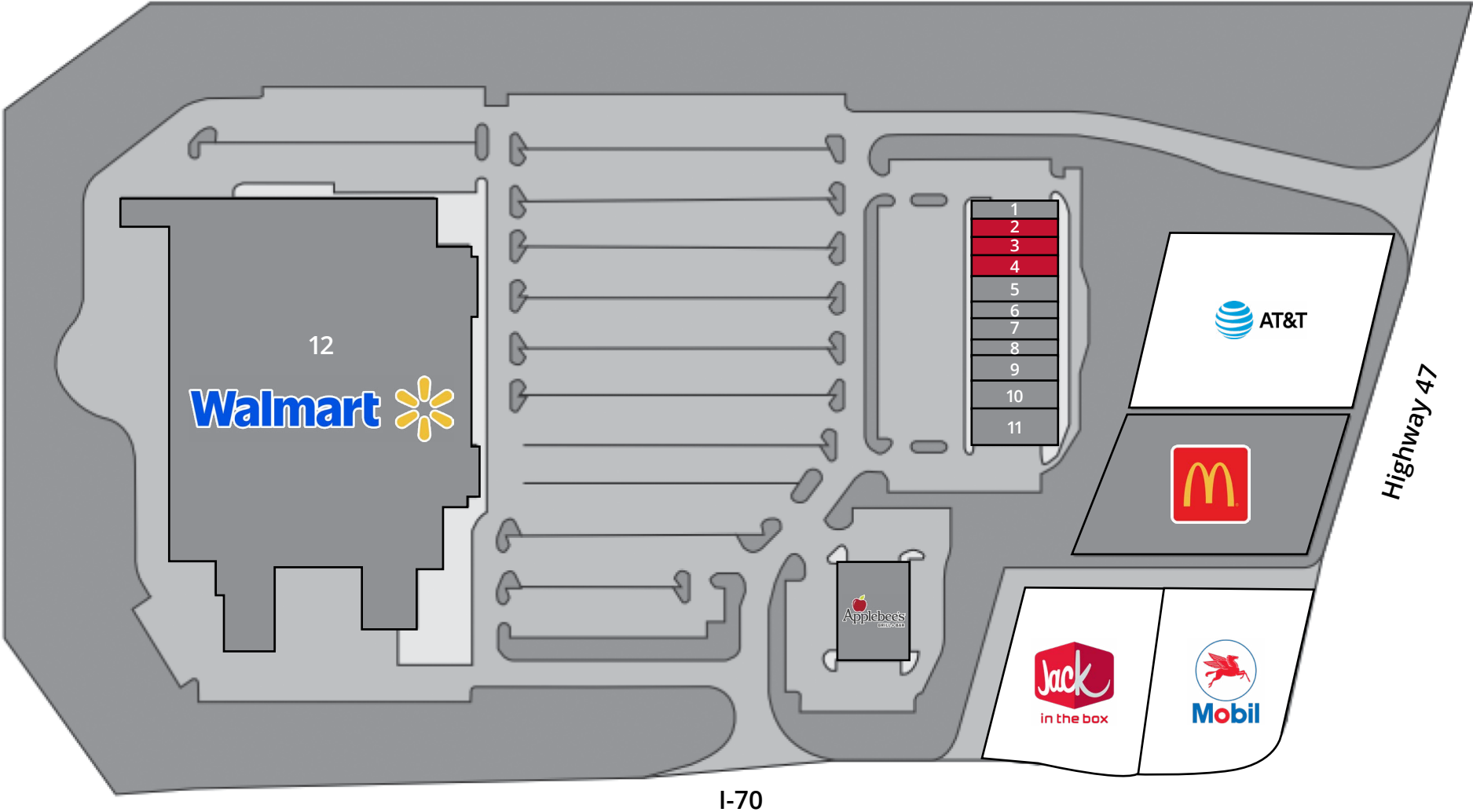


PACEPROPERTIES.COM | 314.968.9898

1401 South Brentwood Boulevard, Suite 900 | St. Louis, Missouri 63144

The information contained herein is not warranted, although it has been obtained from the owner/landlord of the subject property or from other sources that Pace Properties, Inc. deems reliable, and is subject to change without notice. Owner/landlord and Pace Properties, Inc. make no representations as to the environmental condition of the subject property and recommend tenant's independent investigation.

Site Plan



Space	Status	SF	Space	Status	SF
1	T-Mobile	2,000	7	Vapor World	2,000
2	AVAILABLE	1,500	8	Kasabi Hibachi N Sushi	1,500
3	AVAILABLE	1,500	9	Nikodym Dental	6,000
4	AVAILABLE	2,000	10	Clarkson Eyecare	2,500
5	Payday Loans	2,500	11	El Maguey	5,000
6	COCO A Nails	1,500	12	Walmart	157,279

