

# FOR LEASE - Dental Space (2820) & Children's Learning Center (2812)



2800-2828 W. 75th Street, Woodridge 60517



## Greenridge Shopping Center

Available Immediately

Outstanding Visibility

Great Traffic Counts

Verizon and  
ABRI Credit Union Anchored

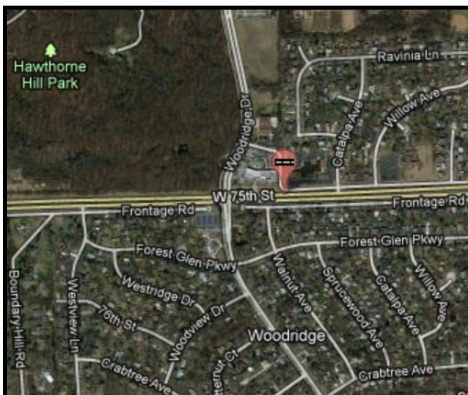
Northeast Corner of 75th  
Street & Woodridge Drive

### AVAILABILITY

- 2812-2816: 2,310/sf (divisible)
- 2820: 802/sf

### PRICING

Lease Rate: \$12.00/sf net  
Cam ('25) estimate: \$3.00/sf  
Tax ('25) estimate: \$4.70/sf



For More Information:

Mark Levy  
President/Managing Broker  
(630) 424-8902 x107  
mlevy@sequoiarg.com

Paris Arnold, CPM®  
Property Manager/Broker  
(630) 424-8902 x105  
parnold@sequoiarg.com

[www.sequoiarg.com](http://www.sequoiarg.com)