

# 921<sup>front</sup>

Entire Second Floor  
10,000 SF

Through February 2030

High-End, Brick & Timber  
Sublease Opportunity

Plug & Play



VIRTUAL TOUR

**NEWMARK**

**Hannah Potter**  
Managing Director

t 415-445-5113  
hannah.potter@nmrk.com  
CA RE Lic #01924485



# HIGHLIGHTS



Full Floor  
Opportunity



Glass-Front Meeting/  
Conference Rooms



High-end Installation  
with Furniture in Place



Beautiful Brick &  
Timber Finishes



Credit-Worthy  
Sublandlord



Skylights Throughout

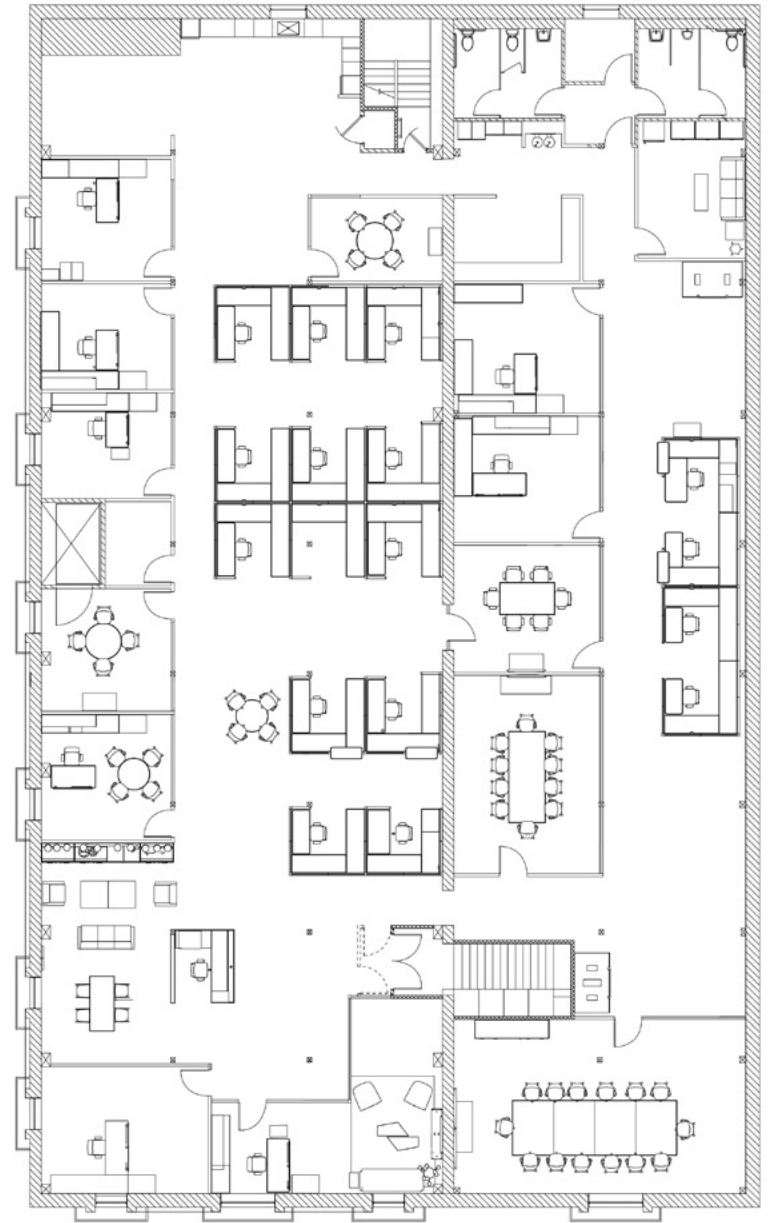


Path to Growth  
within the Building

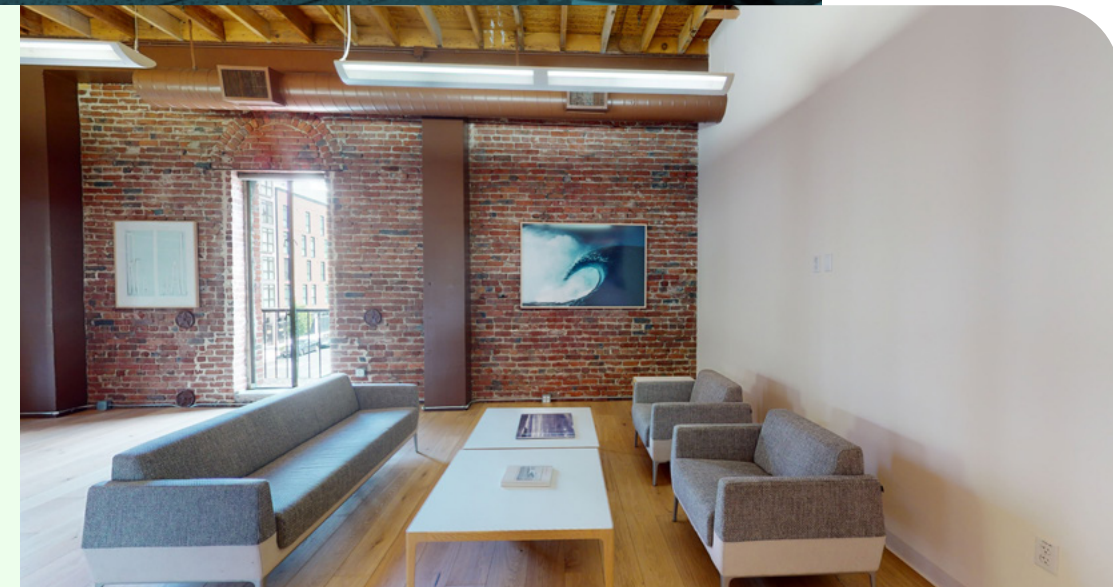


# FLOOR PLAN 10,000 SF

- 10 private offices/meeting rooms
- 2 large conference rooms
- Two 2-person phone booths
- Open area
- 12 workstations currently in place with significant room to accommodate more
- 5 touch-down desks in place
- Reception/soft seating area
- Kitchen
- Copy/production room
- Private restrooms
- En-suite shower
- Storage room



FRONT ST





## Steps from the Embarcadero

---

Great Natural  
Lighting Throughout

---





XICA



PIPERADE



QUINCE



THE BAY CLUB



LE PETIT CAFE



EXPLORATORIUM



KOKKARI ESTIATORIO



PIER 23



COTOGNA

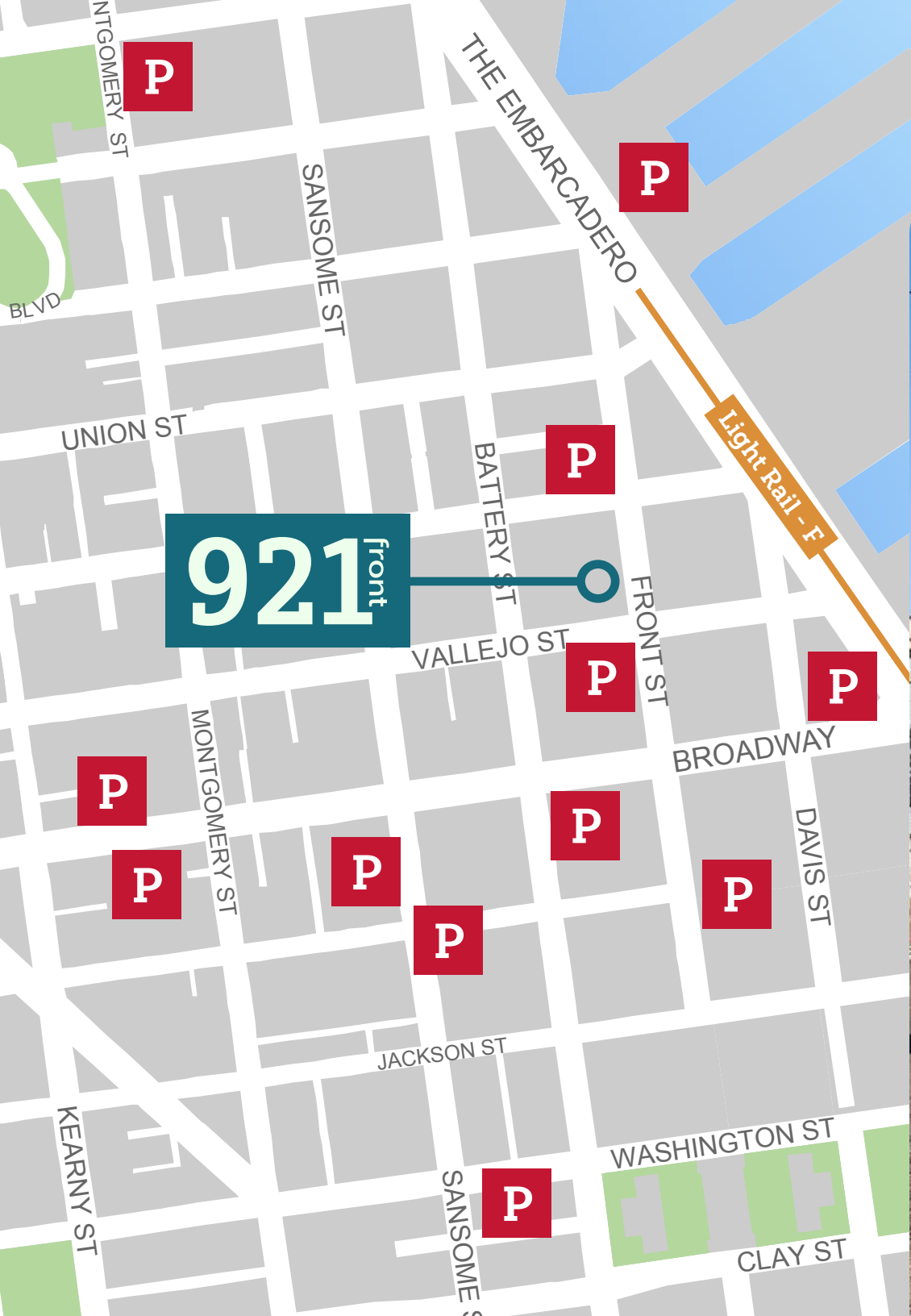


OLD SHIP SALOON



THE BATTERY

# NEARBY PARKING



# 921 Front

Hannah Potter | Managing Director | T 415-445-5113 | hannah.potter@nrmk.com | CA RE License #01924485

**NEWMARK**

ONE SANSOME STREET, FLOOR 41 SAN FRANCISCO, CA 94104  
*The distributor of this communication is performing acts for which a real estate license is required. The information contained herein has been obtained from sources deemed reliable but has not been verified and no guarantee, warranty or representation, either express or implied, is made with respect to such information. Terms of sale or lease and availability are subject to change or withdrawal without notice.*