



OFFICE | INDUSTRIAL | RETAIL
TEAM

the
BIAGINI
BUILDING
900 SANSOME

FOR LEASE



29,349 SQFT | SINGLE TENANT
FLEXIBLE R&D BUILDING/PARKING GARGAE

REDUCED RENT
\$50K/mo

900 SANSOME STREET, SAN FRANCISCO CA

Jake Levinson

415.786.4303
jake@groundmatrix.com
CalDRE #02021931

Alex Fee

209.981.7753
alex@groundmatrix.com
CalDRE #02018515

Alexis Walsh Monsees

Lic. 01900395
T 415 291 8464
alexis.walsh@cbre.com



OFFICE | INDUSTRIAL | RETAIL
TEAM

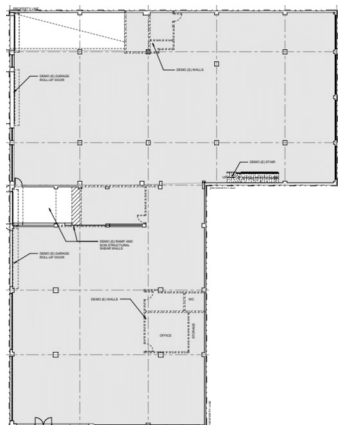
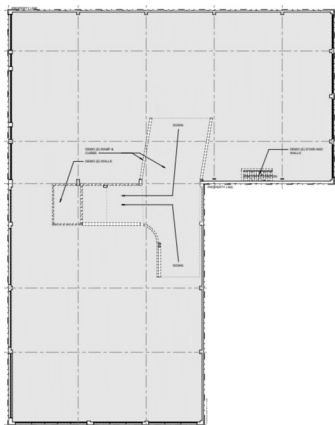
PARKING GARAGE

the
BIAGINI
BUILDING
900 SANSOME



1ST FLOOR

2ND FLOOR



- 3 STORY PARKING GARAGE
- C-2 ZONING
- FLEXIBLE USES
- SKYLIGHTS
- BROADWAY FRONTAGE
- LOW EXPENSES

Jake Levinson

415.786.4303
jake@groundmatrix.com
CalDRE #02021931

Alex Fee

209.981.7753
alex@groundmatrix.com
CalDRE #02018515

Alexis Walsh Monsees

Lic. 01900395
T 415 291 8464
alexis.walsh@cbre.com



OFFICE | INDUSTRIAL | RETAIL
TEAM