

2100 Broadway Street,
Boulder, CO

4,520 Square Feet

Retail/Bank Space Available!

- High pedestrian traffic with excellent visibility
- 1 block from Pearl Street Mall
- Auto access from both Broadway and Spruce Streets
- Freestanding sign (could be LED)
- Includes vault, vault door, large and small safe in cash room, and ATM
- Double glass entry doors facing Broadway
- Parking lot with 7 exclusive parking spaces (including 1 handicapped)
- Access from Broadway or Spruce



TEBO
PROPERTIES

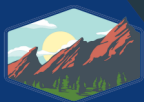
Contact us for more information:

leasing@teboproperties.com

303-447-8326

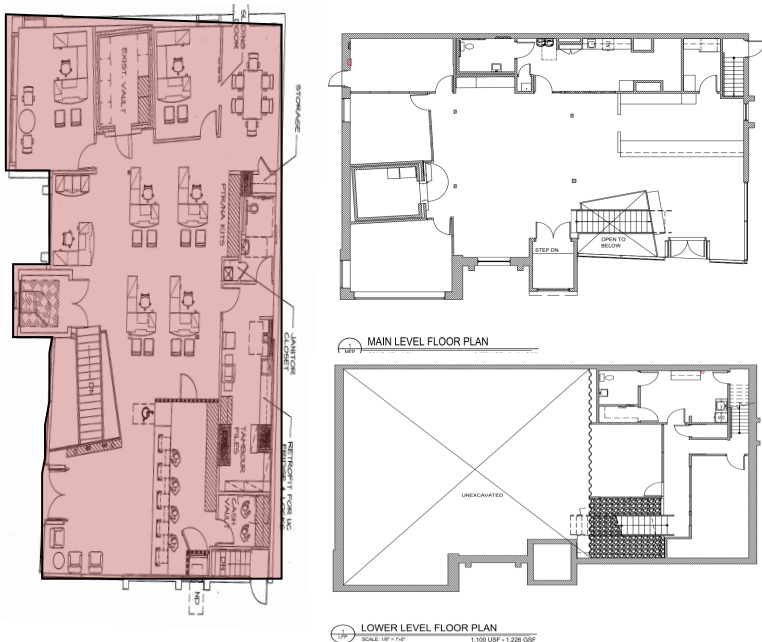
www.TEBOproperties.com

RETAIL/BANK SPACE FOR LEASE

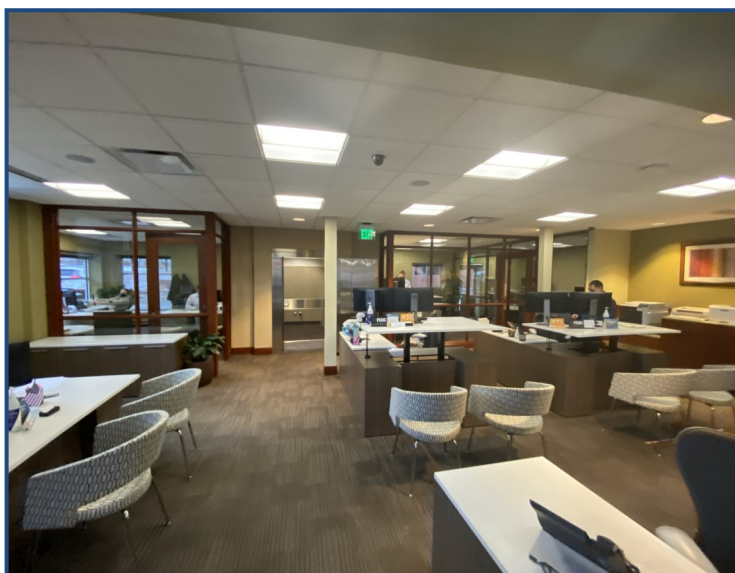



TEBO
PROPERTIES

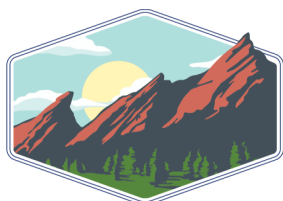
2100 Broadway Street, Boulder, CO



Unit	Square Footage	Price
2100	4,520	CALL NOW FOR RATE!



 - Available for Lease



TEBO
PROPERTIES

Contact us for more information:
leasing@teboproperties.com
303-447-8326
www.TEBOproperties.com