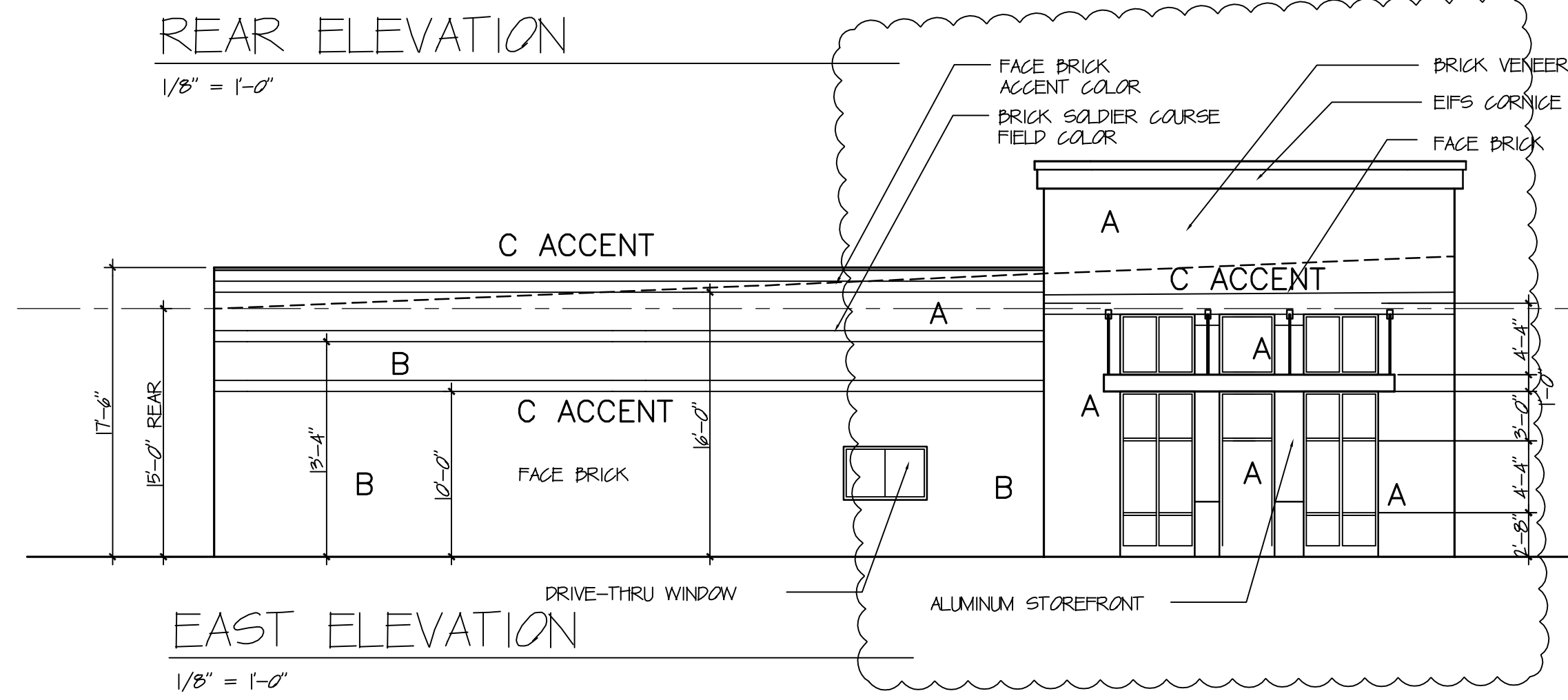
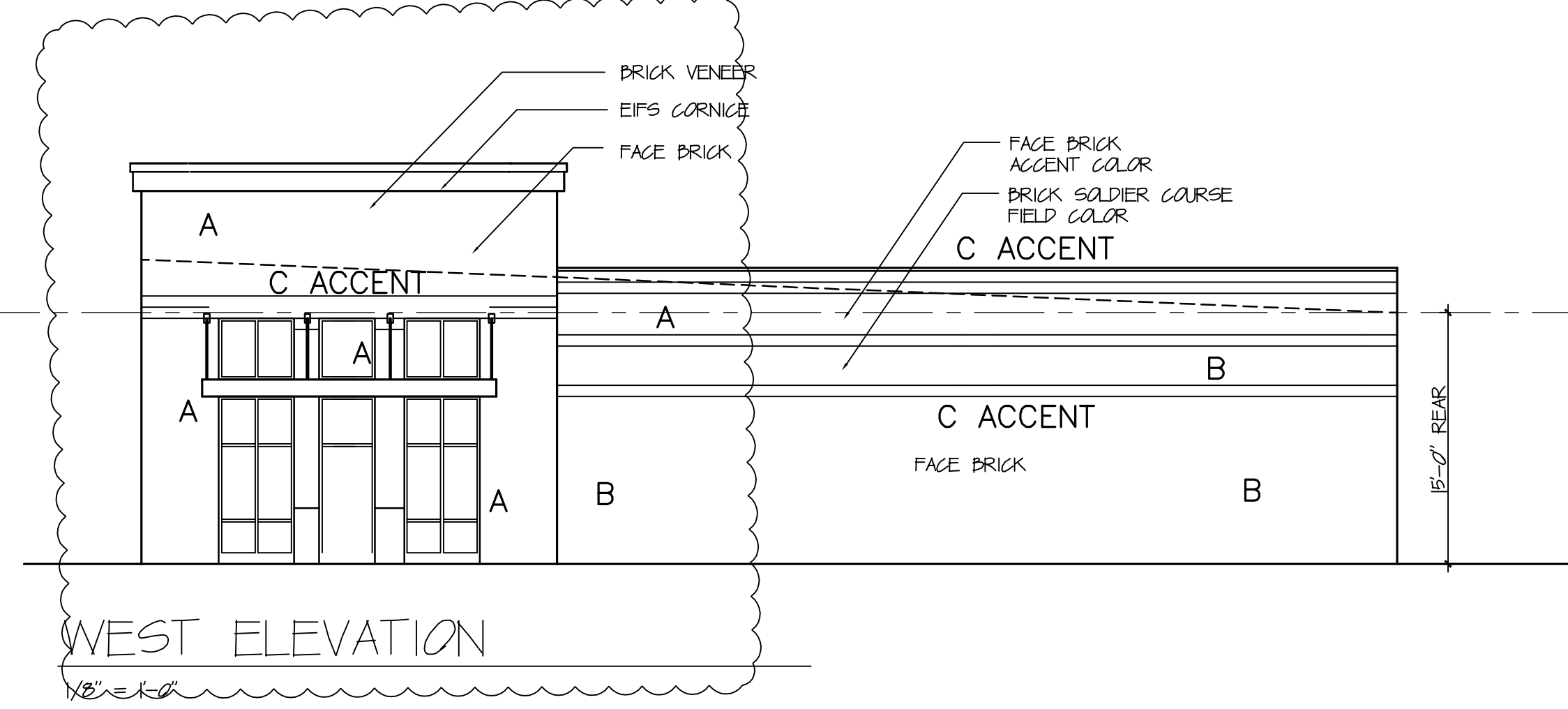


REAR ELEVATION  
1/8" = 1'-0"

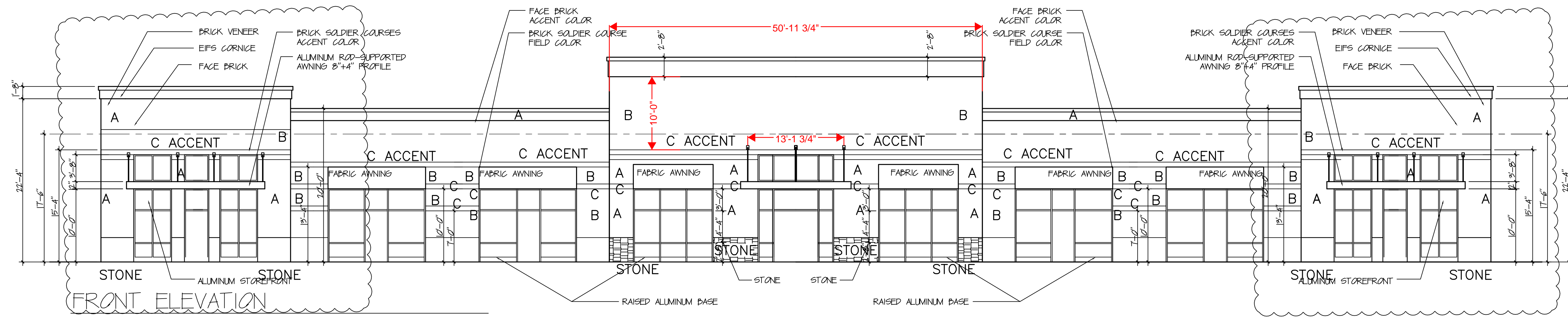


EAST ELEVATION  
1/8" = 1'-0"



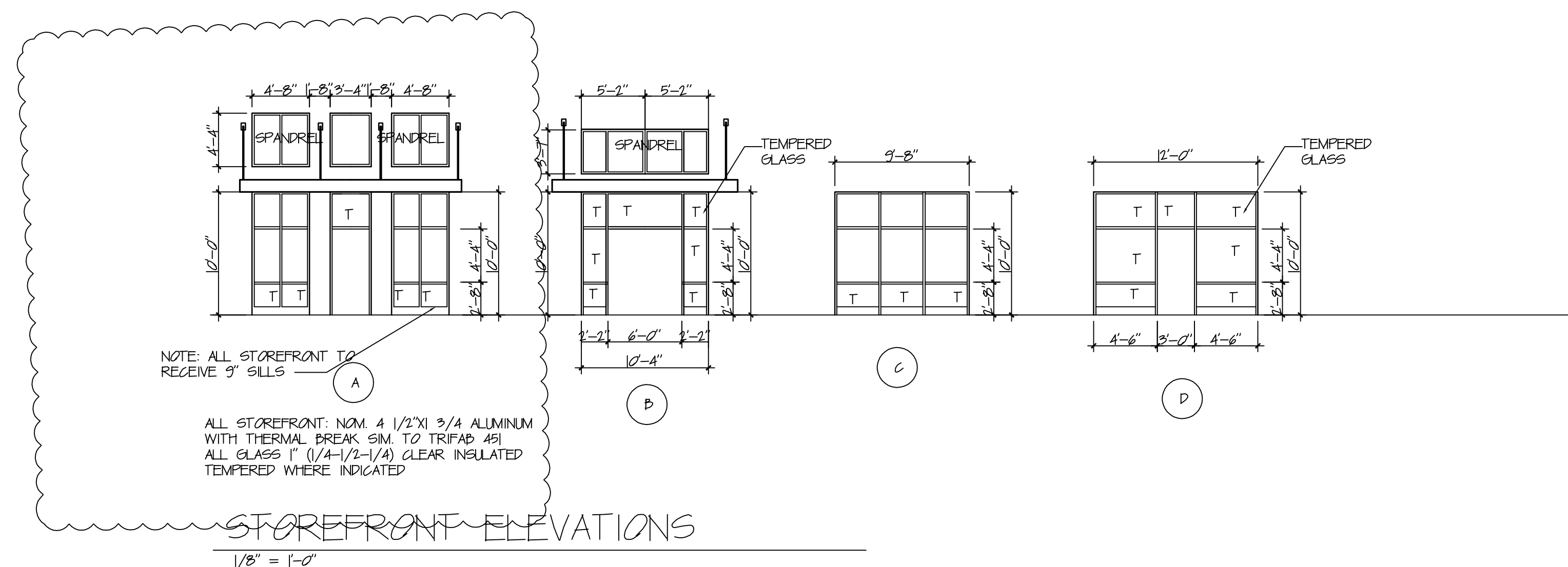
WEST ELEVATION  
1/8" = 1'-0"

A - DARK RED/BROWN BRICK  
 B - LIGHT TAN BRICK  
 C - DARK BROWN ACCENT BRICK  
 MATERIALS ARE SYMMETRICAL ABOUT CENTER



FRONT ELEVATION  
1/8" = 1'-0"

TOTAL AREA OF FRONT ELEVATION: 4136 SQ. FT.  
 TOTAL VOID AREA: 1651 SQ. FT.  
 PERCENTAGE VOID TO FRONT: 40%



STOREFRONT ELEVATIONS  
1/8" = 1'-0"

COMMERCIAL CENTER  
 1636 NEW SALEM HIGHWAY  
 MURFREESBORO, TENNESSEE

W. Michael Stewart  
 Architecture  
 Murfreesboro, Tennessee 37129  
 1318 Tomahawk Trace

BUILDING ELEVATIONS  
 WILLIAM M. STEWART  
 ARCHITECT  
 STATE OF TENNESSEE  
 DECEMBER 18, 2019  
 NOVEMBER 11, 2019  
 MAY 10, 2018  
 SCALE 1/8" = 1'-0"