



METROPOLITAN
TRACT

PUGET SOUND
PLAZA



PUGET SOUND PLAZA

1325 Fourth Avenue | Seattle, Washington 98101



BUILDING FACTS

- » Total Building Size.....275,000 RSF
- » Number of Floors21
- » Average Floor Plate13,800 RSF
- » Year Built.....1960
- » Parking Ratio.....1 / 1,800 SF
- » LEED EB Gold Certified



BUILDING AMENITIES

- » Conference room facility
- » Shower facilities
- » 306 parking stalls
- » EV charging system

ON-SITE RETAIL

- » Union Deli
- » Key Bank
- » Seattle Vision Care
- » Skyline Hair Design
- » Northwest Pendleton
- » T. Anthony Jewelers
- » UW - Husky Central

PUGET SOUND PLAZA

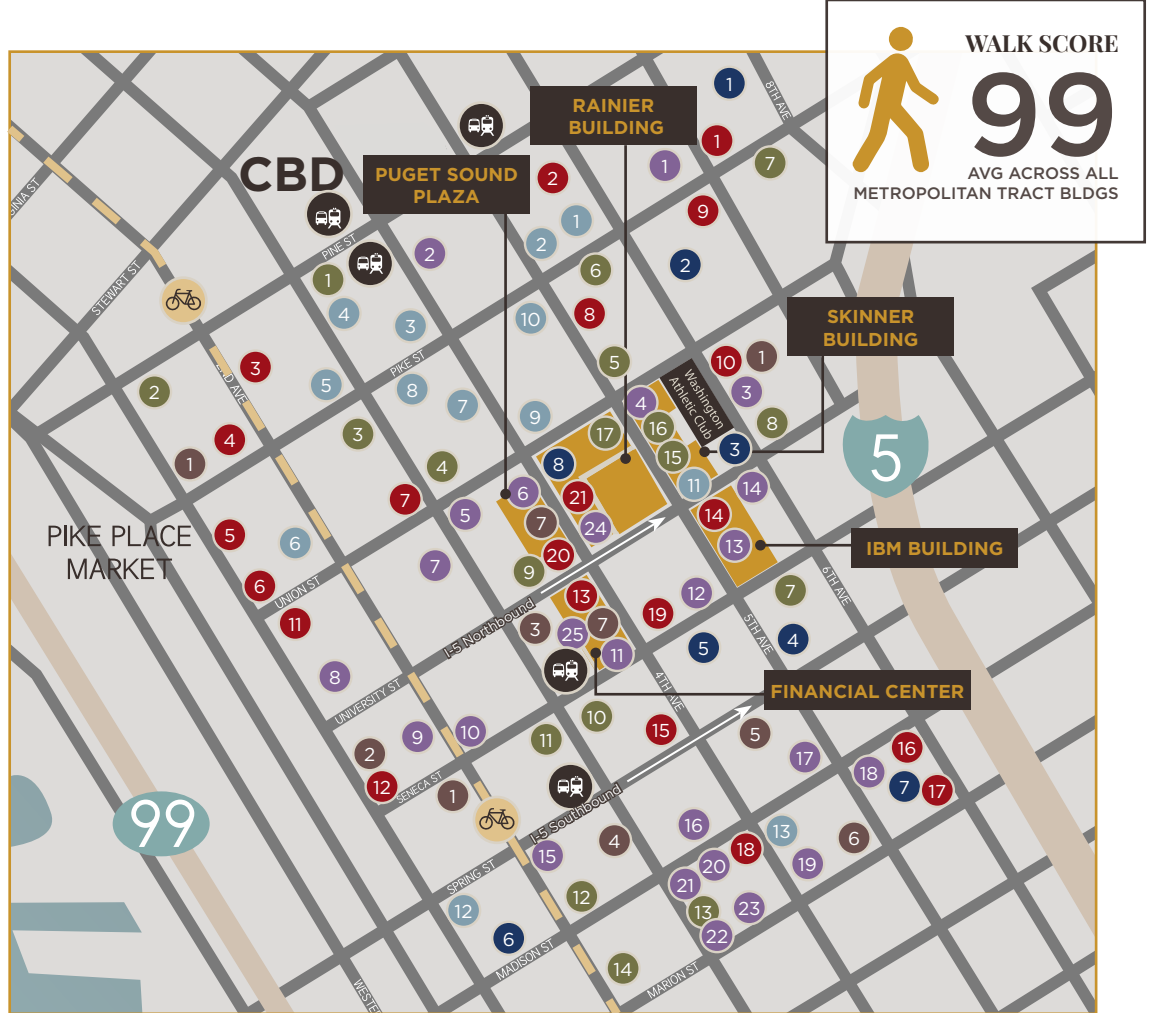
1325 Fourth Avenue | Seattle, Washington 98101

Lifestyle

1. Regal Cinemas
2. Westlake Park
3. Home Street Bank
4. 5th Avenue Theater
5. U.S. Post Office
6. Key Bank
7. Benaroya Hall
8. Seattle Art Museum
9. Queen Bee Nail Spa
10. American West Bank
11. Wells Fargo Bank
12. UPS Store
13. Union Bank
14. Seattle Infant Development Center
15. Banner Bank
16. Bank of America
17. Seattle Public Library
18. Samir's Salon
19. Silicon Valley Bank
20. Downtown Dentistry
21. Capelli's Barbershop
22. Northwest Bank
23. YMCA - Facility / Child Care
24. Equinox Gym (NEW)
25. Graham Rehabilitation and Wellness Center, Inc.

Restaurant / Bar

1. Cheesecake Factory
2. Morton's Steak House
3. Elysian Bar
4. Hard Rock Café
5. Blarney Stone Pub
6. Japonessa
7. Wild Ginger
8. Palomino
9. Daily Grill
10. Cortina
11. TASTE
12. Italian Family Pizza
13. Purple Café & Wine Bar
14. Hamanasu
15. Outlier
16. Lobby Court
17. Maxwell's Restaurant
18. Sushi Kudaschi
19. Schuckers
20. Capital Grille
21. Equinox Bar (NEW)



Coffee House

1. Starbucks
2. Cherry Street Coffee House
3. Pegasus Coffee Bar
4. Peet's Coffee
5. Choclati Café
6. Café 5ive
7. Cafe Miglore

Hotel

1. Grand Hyatt Hotel
2. Sheraton Hotel
3. Hilton Seattle
4. Hotel Vintage Seattle
5. W Seattle
6. Hotel 1000
7. Renaissance Seattle Hotel
8. Equinox Hotel (NEW)

Deli / Grab & Go

1. McDonald's
2. Zaina
3. Qdoba Mexican Eats
4. Gelatiamo
5. Specialty's
6. Jimmy John's
7. Subway
8. MOD Pizza
9. Essential Market
10. Urban Juices
11. Potbelly Sandwich Shop
12. Blue Water Taco Grill
13. Market Fresh Salad Bar
14. Homegrown Sustainable Sandwich Shop
15. Umma's Lunchbox
16. Market Fresh
17. PCC Market (NEW)

Retail

1. H&M
2. Banana Republic
3. AT&T
4. SevenEleven
5. Walgreens
6. Target
7. Office Depot
8. Ross Dress for Less
9. Men's Wearhouse
10. Ben Bridge Jeweler
11. Gucci
12. Watson Kennedy Fine Home
13. Bartell Drugs



PUGET SOUND PLAZA

1325 Fourth Avenue | Seattle, Washington 98101



CURRENT AVAILABLE SUITES

| Floor / Suite | RSF | Comments |
|-------------------------|-------|--|
| 19/1900 | 7,094 | Available May 1, 2019. Perimeter offices with Southern wrap-around views and lobby exposure. |
| 18/1845 | 673 | Available now! Office with Eastern views. |
| 17/1730 | 1,983 | Available October 1, 2019. 5 private offices, kitchenette/break room, and reception desk. |
| 17/1705 | 5,471 | Available October 1, 2019. 15 perimeter offices, 3 conference rooms, and kitchenette/break room. South-facing. |
| 15/1500 | 3,217 | Available March 1, 2019. West-facing space with perimeter offices, and kitchen/break room. |
| 13/1305 | 2,285 | Available June 1, 2019. Two private offices, conference room, open workspace, kitchen and break room. |
| 11/1130 | 4,262 | Available now! Ten private offices, conference room, wide open area for cubicles; Northern wrap-around suite with water and city views! Virtual Tour available at https://bit.ly/2r15Ekv |
| 10/1035 | 3,538 | Available July 1, 2019. Three private offices, conference room, wide open office, kitchenette. Northeastern corner suite. |
| 5/535 | 3,941 | Available now! Window-lined private offices, conference rooms, and kitchenette. |



Broderick Group, Inc.
601 Union Street, Suite 1606
Seattle, WA 98101
main: (206) 838-5775

broderickgroup.com

For further information, please contact:

Damon McCartney
(206) 838-7633
mccartney@broderickgroup.com

David Greenwood
(206) 838-7635
greenwood@broderickgroup.com



METROPOLITAN
TRACT

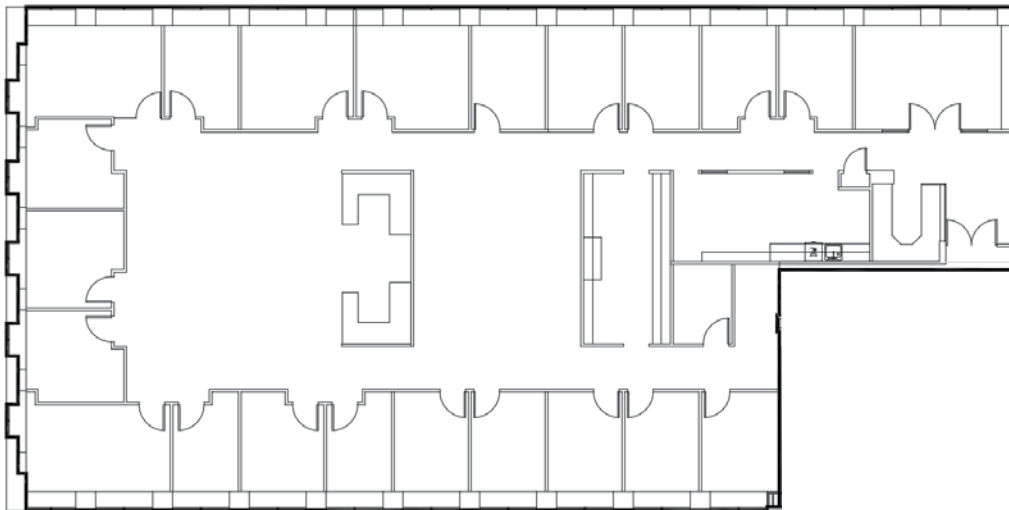
The information contained herein has been given to us by the owner or sources which we deem reliable. We have no reason to doubt its accuracy, but we do not guarantee it. Prospective tenants should carefully verify all information contained herein.



PUGET SOUND PLAZA

1325 Fourth Avenue | Seattle, Washington 98101

SUITE 1900
7,094 RSF



SPACE FEATURES:

- » Available May 1, 2019
- » Window-lined private offices
- » 3 conference rooms
- » Kitchenette



Broderick Group, Inc.
601 Union Street, Suite 1606
Seattle, WA 98101
main: (206) 838-5775

broderickgroup.com

For further information, please contact:

Damon McCartney
(206) 838-7633
mccartney@broderickgroup.com

David Greenwood
(206) 838-7635
greenwood@broderickgroup.com



METROPOLITAN
TRACT



PUGET SOUND PLAZA

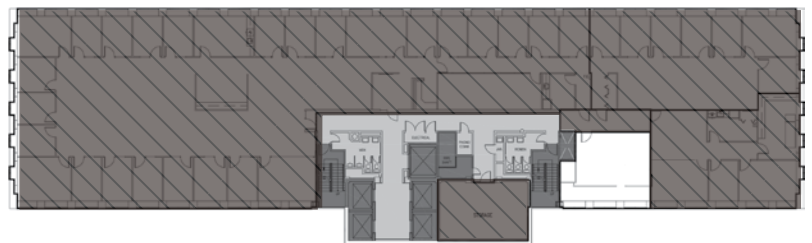
1325 Fourth Avenue | Seattle, Washington 98101

SUITE 1845
673 RSF



SPACE FEATURES:

- » Available now!
- » Eastern views



Broderick Group, Inc.
601 Union Street, Suite 1606
Seattle, WA 98101
main: (206) 838-5775

broderickgroup.com

For further information, please contact:

Damon McCartney
(206) 838-7633
mccartney@broderickgroup.com

David Greenwood
(206) 838-7635
greenwood@broderickgroup.com



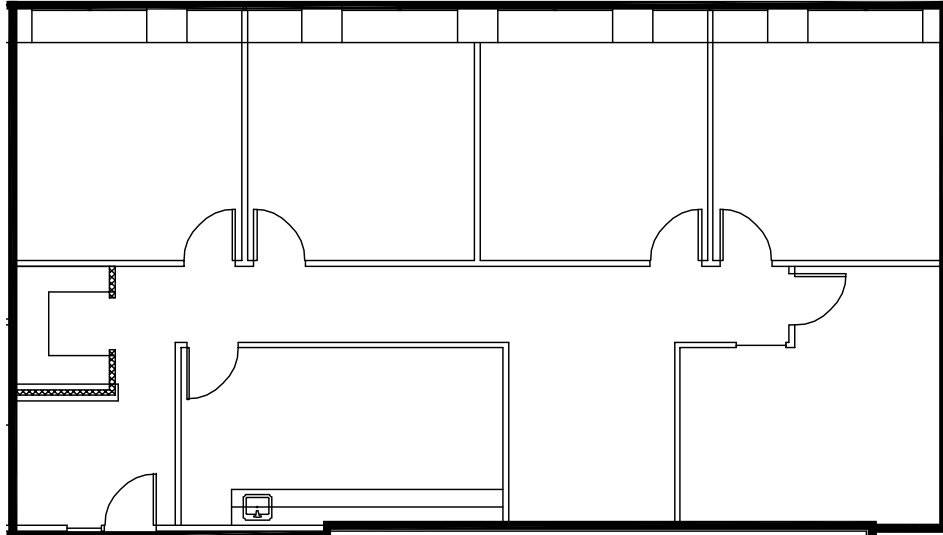
METROPOLITAN
TRACT



PUGET SOUND PLAZA

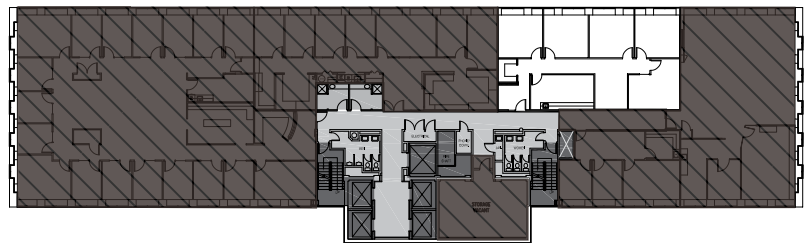
1325 Fourth Avenue | Seattle, Washington 98101

SUITE 1730
1,983 RSF



SPACE FEATURES:

- » Available October 1, 2019
- » 5 private offices
- » Kitchenette/break room
- » Reception desk



Broderick Group, Inc.
601 Union Street, Suite 1606
Seattle, WA 98101
main: (206) 838-5775

broderickgroup.com

For further information, please contact:

Damon McCartney
(206) 838-7633
mccartney@broderickgroup.com

David Greenwood
(206) 838-7635
greenwood@broderickgroup.com



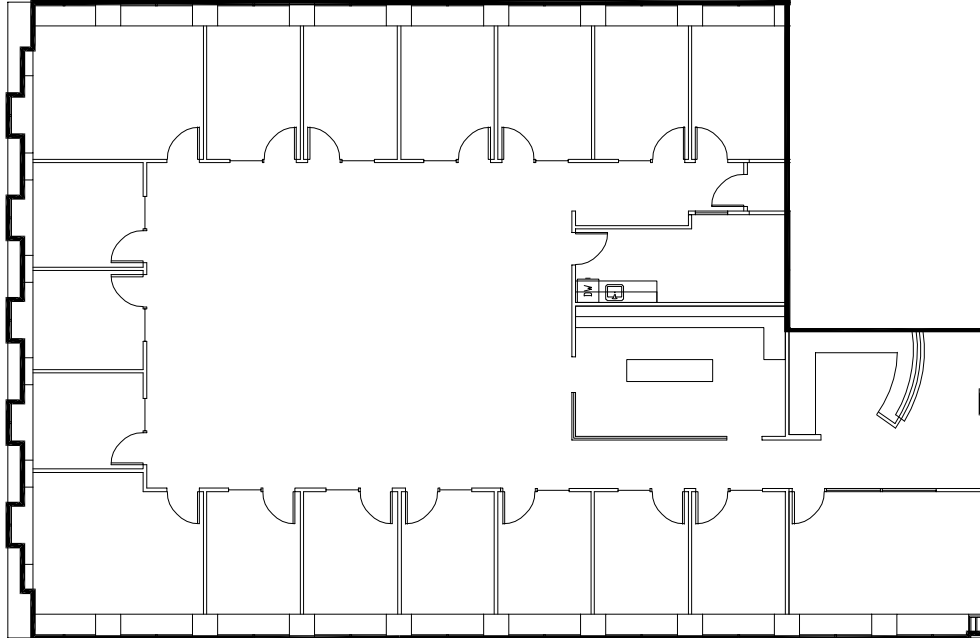
METROPOLITAN
TRACT



PUGET SOUND PLAZA

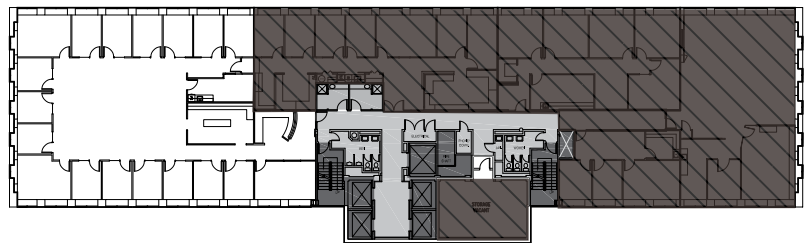
1325 Fourth Avenue | Seattle, Washington 98101

SUITE 1705
5,471 RSF



SPACE FEATURES:

- » Available October 1, 2019
- » 15 private offices
- » 3 Conference room
- » Kitchenette/break room



Broderick Group, Inc.
601 Union Street, Suite 1606
Seattle, WA 98101
main: (206) 838-5775

broderickgroup.com

For further information, please contact:

Damon McCartney
(206) 838-7633
mccartney@broderickgroup.com

David Greenwood
(206) 838-7635
greenwood@broderickgroup.com



METROPOLITAN
TRACT

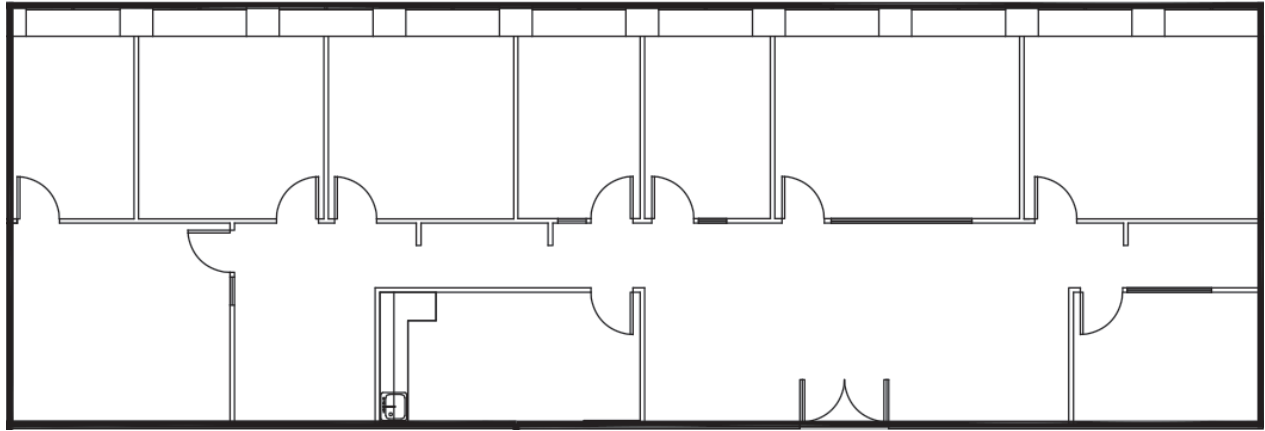
The information contained herein has been given to us by the owner or sources which we deem reliable. We have no reason to doubt its accuracy, but we do not guarantee it. Prospective tenants should carefully verify all information contained herein.



PUGET SOUND PLAZA

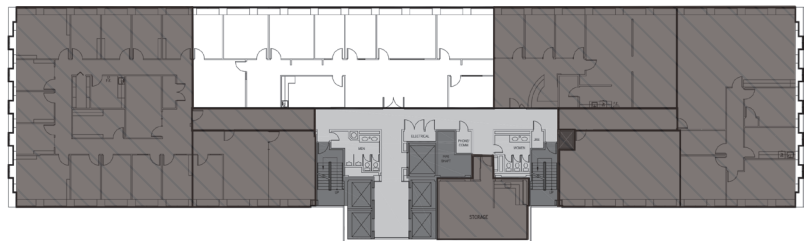
1325 Fourth Avenue | Seattle, Washington 98101

SUITE 1500
3,217 RSF



SPACE FEATURES:

- » Available now
- » West-facing space
- » Perimeter offices
- » Kitchen/break room



Broderick Group, Inc.
601 Union Street, Suite 1606
Seattle, WA 98101
main: (206) 838-5775

broderickgroup.com

For further information, please contact:

Damon McCartney
(206) 838-7633
mccartney@broderickgroup.com

David Greenwood
(206) 838-7635
greenwood@broderickgroup.com



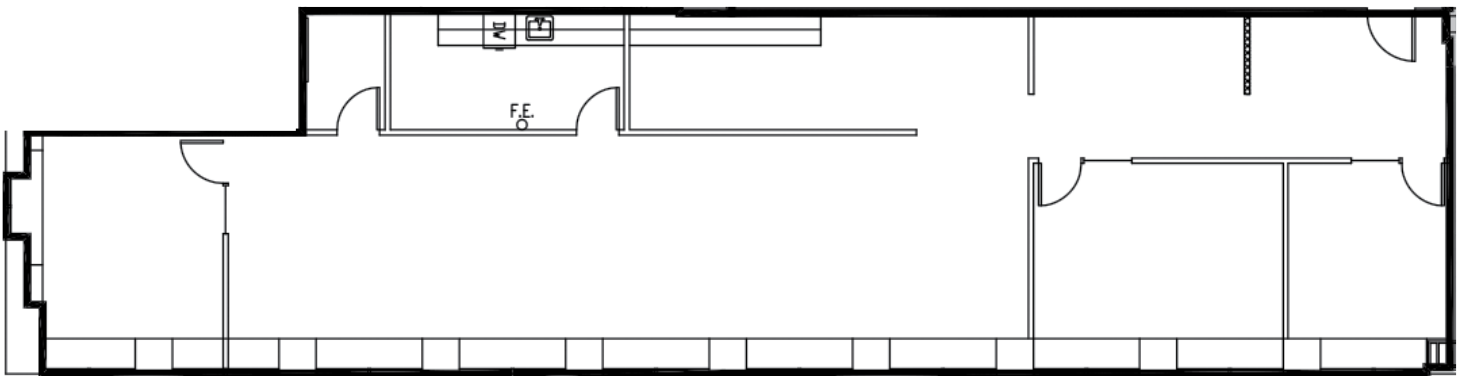
METROPOLITAN
TRACT



PUGET SOUND PLAZA

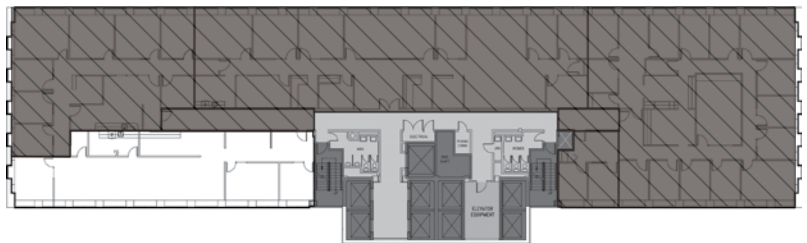
1325 Fourth Avenue | Seattle, Washington 98101

SUITE 1305
2,285 RSF



SPACE FEATURES:

- » Available June 1, 2019
- » 2 private offices
- » Conference room
- » Wide open space
- » Kitchen/ break room



Broderick Group, Inc.
601 Union Street, Suite 1606
Seattle, WA 98101
main: (206) 838-5775

broderickgroup.com

For further information, please contact:

Damon McCartney
(206) 838-7633
mccartney@broderickgroup.com

David Greenwood
(206) 838-7635
greenwood@broderickgroup.com



METROPOLITAN
TRACT


The information contained herein has been given to us by the owner or sources which we deem reliable. We have no reason to doubt its accuracy, but we do not guarantee it. Prospective tenants should carefully verify all information contained herein.

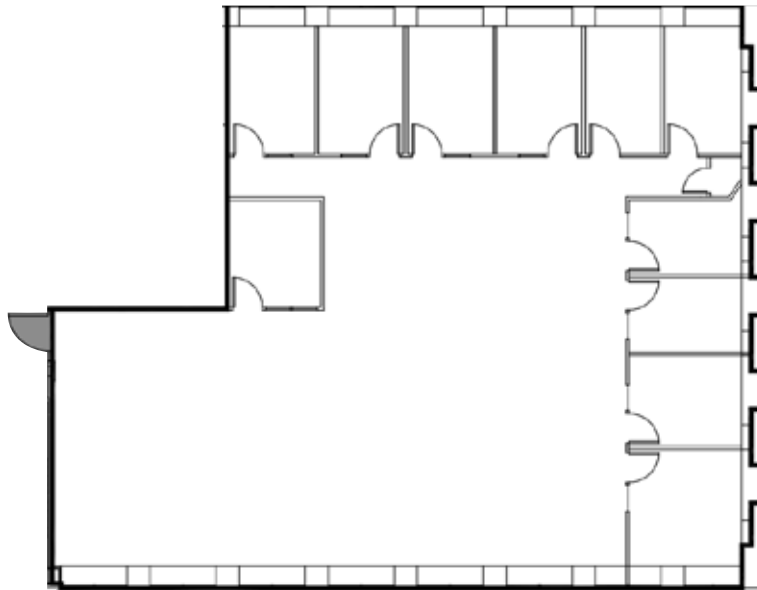


PUGET SOUND PLAZA

1325 Fourth Avenue | Seattle, Washington 98101

SUITE 1130
4,262 RSF

 For virtual tour, visit:
bit.ly/2r15Ekv



SPACE FEATURES:

- » Available now!
- » 10 private offices
- » Conference room
- » Wide open space
- » Water & city views



Broderick Group, Inc.
601 Union Street, Suite 1606
Seattle, WA 98101
main: (206) 838-5775

broderickgroup.com

For further information, please contact:

Damon McCartney
(206) 838-7633
mccartney@broderickgroup.com

David Greenwood
(206) 838-7635
greenwood@broderickgroup.com



METROPOLITAN
TRACT

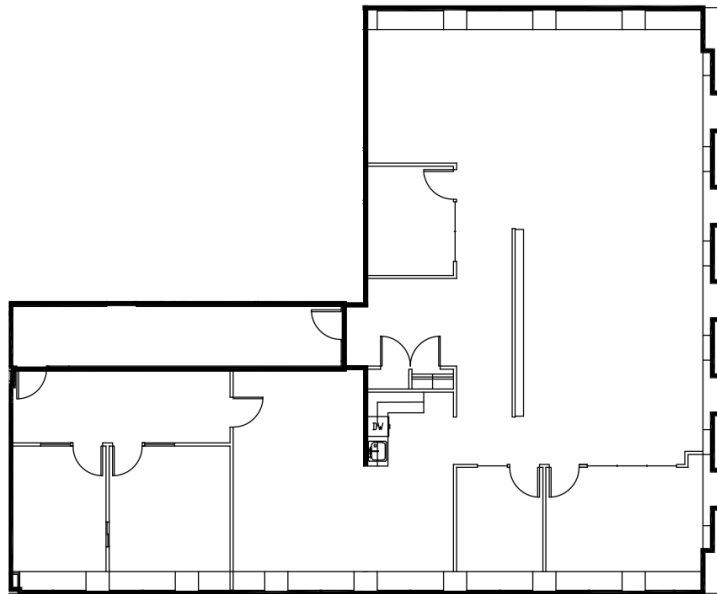
The information contained herein has been given to us by the owner or sources which we deem reliable. We have no reason to doubt its accuracy, but we do not guarantee it. Prospective tenants should carefully verify all information contained herein.



PUGET SOUND PLAZA

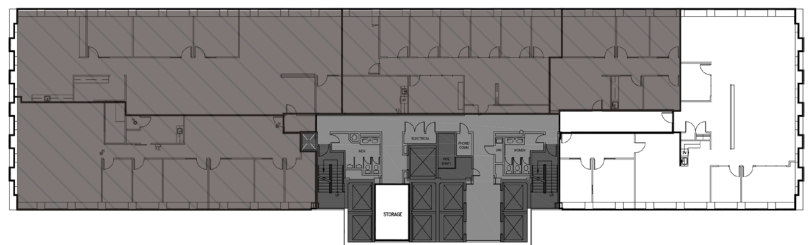
1325 Fourth Avenue | Seattle, Washington 98101

SUITE 1035
3,538 RSF



SPACE FEATURES:

- » Available July 1, 2019
- » 4 private offices
- » Conference room
- » Kitchenette
- » Wide open work area



Broderick Group, Inc.
601 Union Street, Suite 1606
Seattle, WA 98101
main: (206) 838-5775

broderickgroup.com

For further information, please contact:

Damon McCartney
(206) 838-7633
mccartney@broderickgroup.com

David Greenwood
(206) 838-7635
greenwood@broderickgroup.com



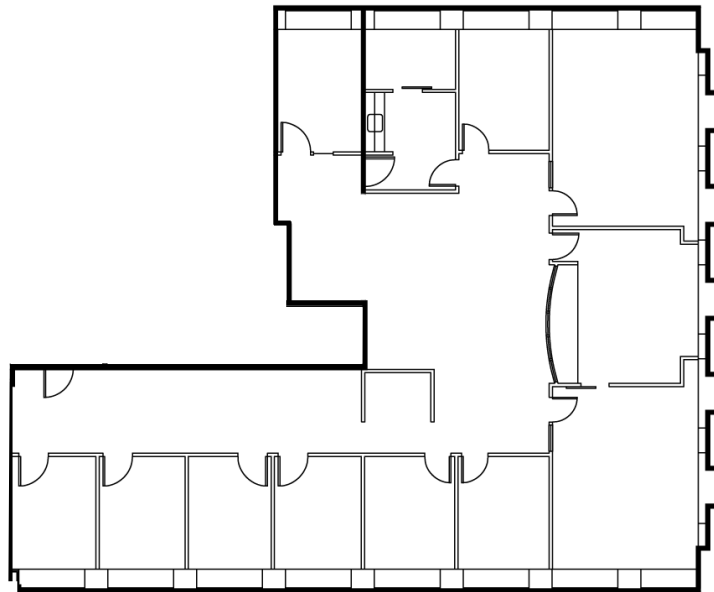
METROPOLITAN
TRACT



PUGET SOUND PLAZA

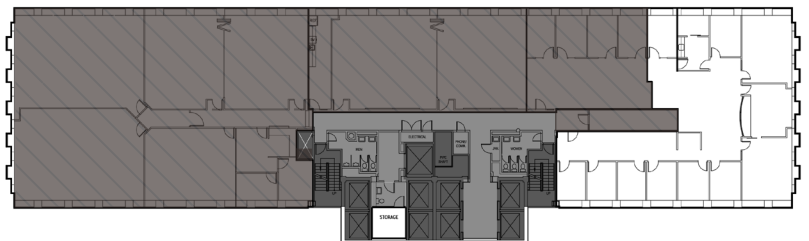
1325 Fourth Avenue | Seattle, Washington 98101

SUITE 535
3,941 RSF



SPACE FEATURES:

- » Available now!
- » Window-lined private offices
- » 2 conference rooms
- » Kitchenette



Broderick Group, Inc.
601 Union Street, Suite 1606
Seattle, WA 98101
main: (206) 838-5775

broderickgroup.com

For further information, please contact:

Damon McCartney
(206) 838-7633
mccartney@broderickgroup.com

David Greenwood
(206) 838-7635
greenwood@broderickgroup.com



METROPOLITAN
TRACT

The information contained herein has been given to us by the owner or sources which we deem reliable. We have no reason to doubt its accuracy, but we do not guarantee it. Prospective tenants should carefully verify all information contained herein.