



For Sublease



5050 Tilghman Street Allentown, PA

Space Available

5,948 SF

Term through August 2023

Located in the Commerce Corporate Center

Campus like setting, tenants have access to fitness center, deli and walking/jogging trails.



Furniture Available



Immediate access to all major highways



Minutes to shopping, hotels, and restaurants

Accelerating success.

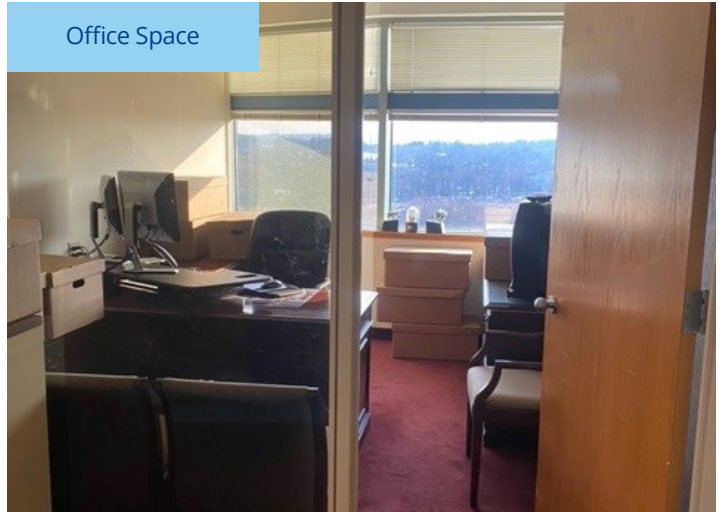
5050 Tilghman St | For Sublease

Property Gallery

Hallway



Office Space



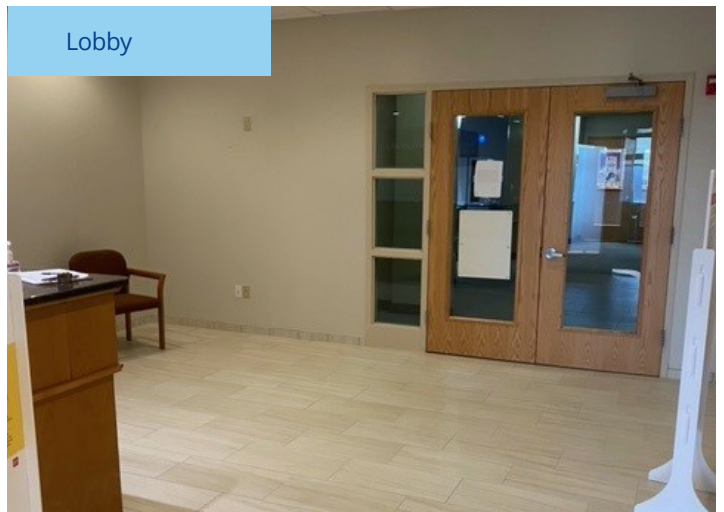
Reception Desk



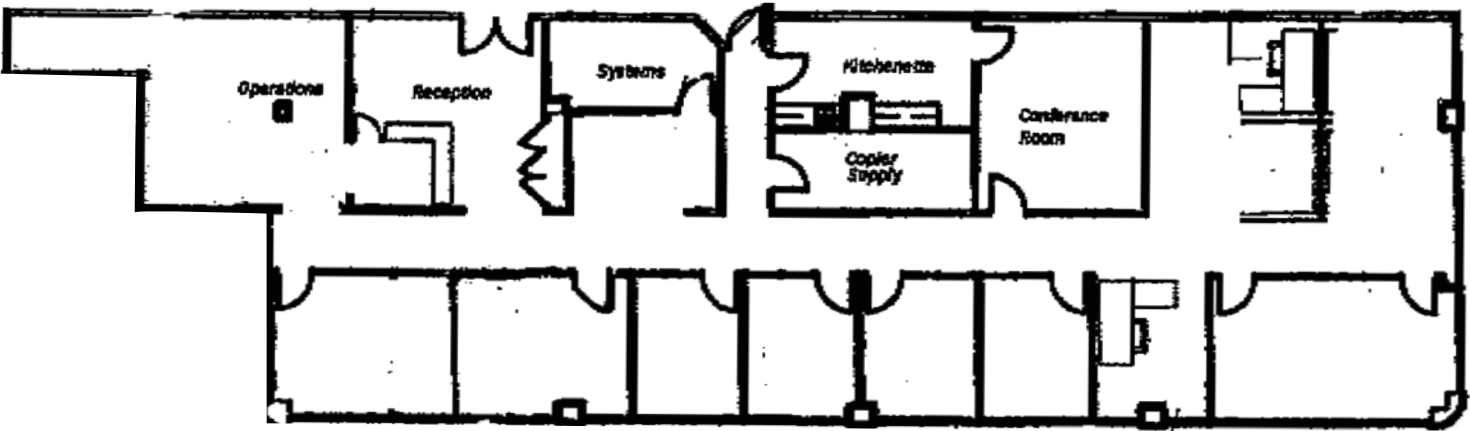
Kitchen / Cafe



Lobby



Floor Plan



Contact Information

John Susanin
Senior Managing Director
+1 610 684 1860
john.susanin@colliers.com

Colliers International
161 Washington Street, Suite 1090
Conshohocken, PA 19428
www.colliers.com/philadelphia



This document has been prepared by Colliers International for advertising and general information only. Colliers International makes no guarantees, representations or warranties of any kind, expressed or implied, regarding the information including, but not limited to, warranties of content, accuracy and reliability. Any interested party should undertake their own inquiries as to the accuracy of the information. Colliers International excludes unequivocally all inferred or implied terms, conditions and warranties arising out of this document and excludes all liability for loss and damages arising there from. This publication is the copyrighted property of Colliers International and/or its licensor(s). ©2021. All rights reserved.