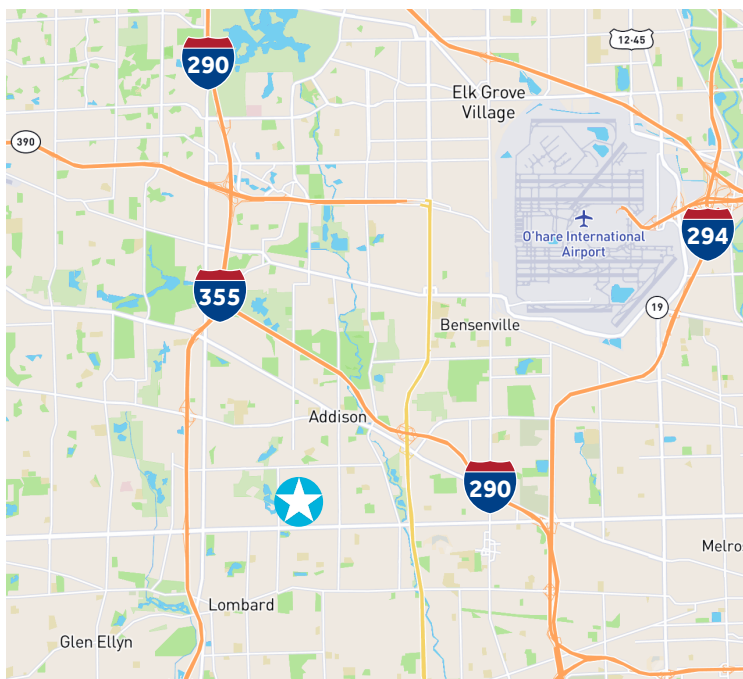


780 Belden Avenue Addison, Illinois

14,024 SF Available For Sublease | Suite A

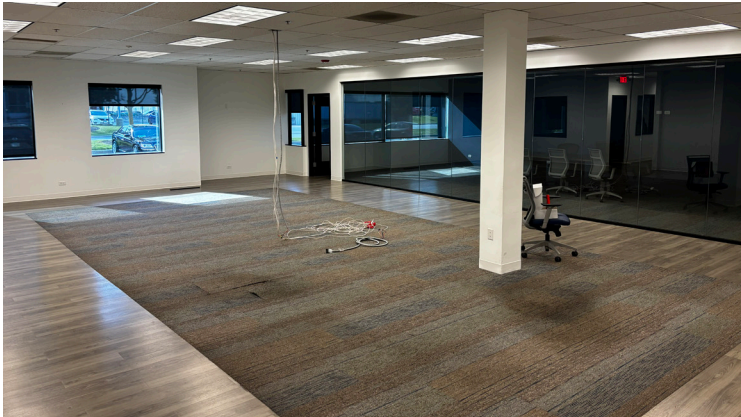


Property Specifications

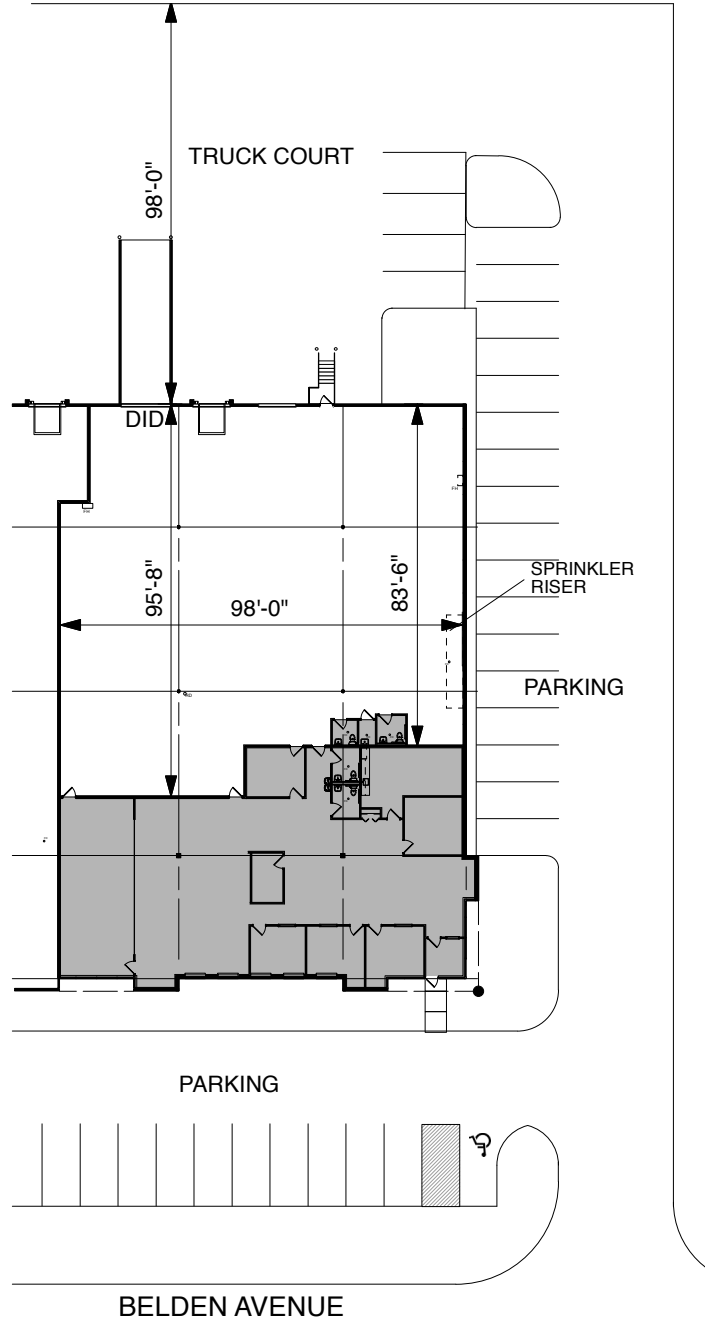
Building Size	54,142 SF
Available Size	14,024 SF
Office Size	5,280 SF
Ceiling Height	18' clear
Loading	2 exterior docks 1 drive-in door (12' x 14')
Sublease Term Through	September 30, 2030
Asking Sublease Rate	Subject to offer

Highlights

- High-image business park
- DuPage County taxes
- Minutes from I-355 interchange at North Avenue
- Close proximity to I-290 and I-294



Site Plan



Contact Us

Philip DeBoer
First Vice President
+1 708 420 7653
philip.deboer@cbre.com

Clayton Thorson
Associate
+1 630 344 2560
clayton.thorson@cbre.com

Genna Ohrn
Transaction Manager
+1 708 415 5350
genna.ohrn@cbre.com

© 2025 CBRE, Inc. All rights reserved. This information has been obtained from sources believed reliable, but has not been verified for accuracy or completeness. You should conduct a careful, independent investigation of the property and verify all information. Any reliance on this information is solely at your own risk. CBRE and the CBRE logo are service marks of CBRE, Inc. All other marks displayed on this document are the property of their respective owners, and the use of such logos does not imply any affiliation with or endorsement of CBRE. Photos herein are the property of their respective owners. Use of these images without the express written consent of the owner is prohibited.