



# BATESVILLE MARKET PLACE

AVAILABLE FOR LEASE



Ryan George  
RYANGEORGE72471@GMAIL.COM  
870.974.1249



# 3050 HARRISON STREET BATESVILLE, ARKANSAS

## HIGHLIGHTS



For Lease \$12.00 / SF

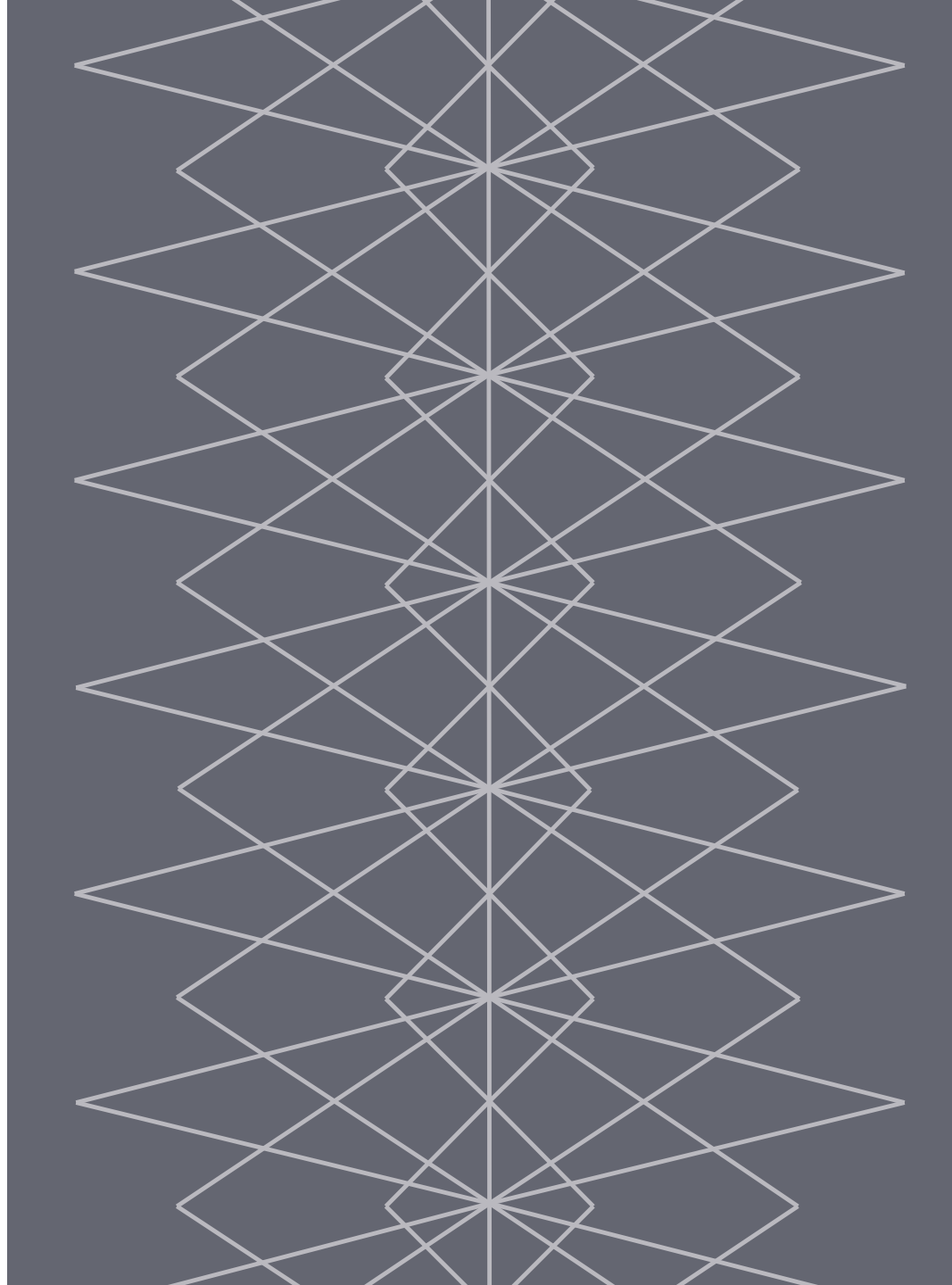
1,900 +/- SF Available

\$1.50 NNN

Great Visibility

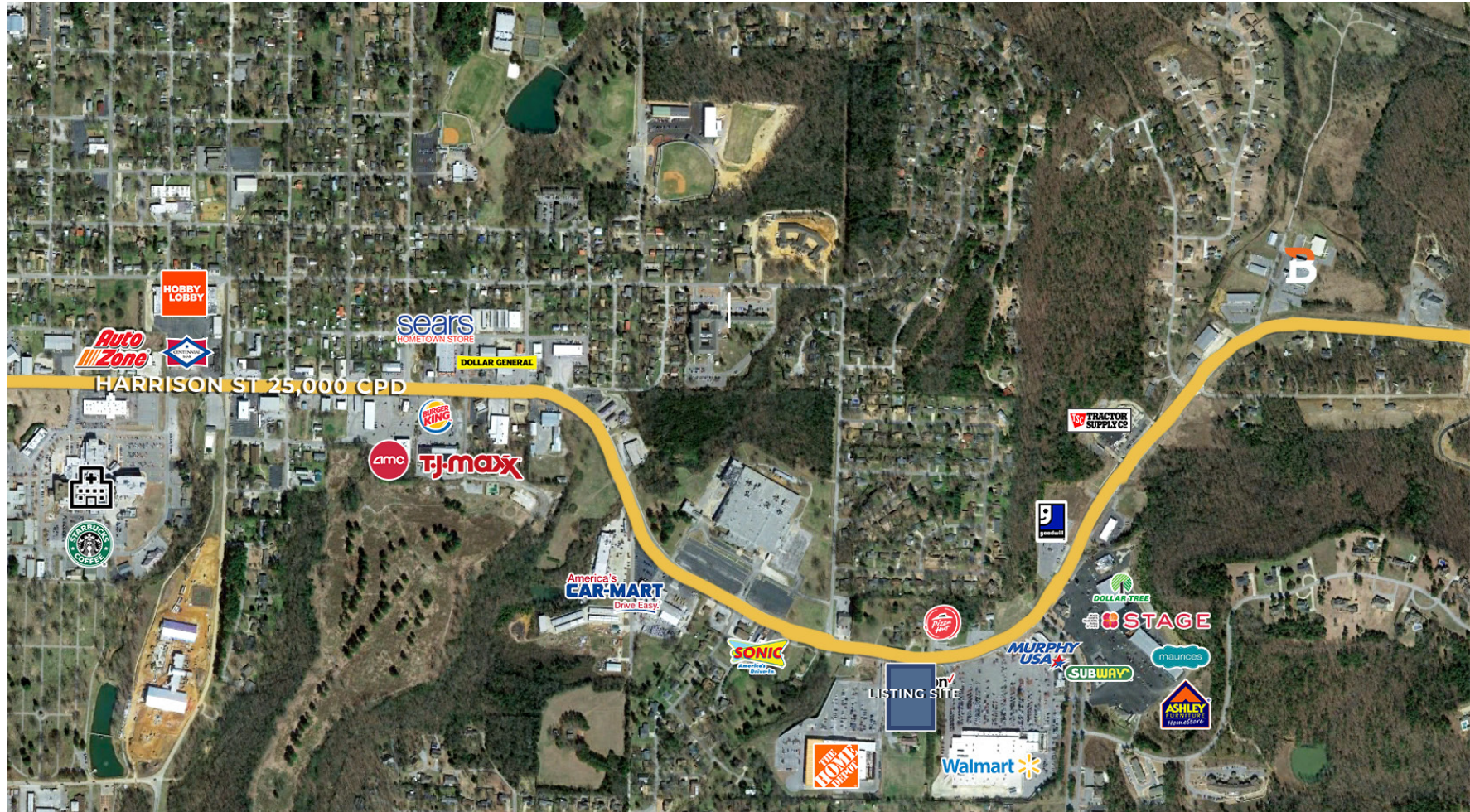
Between Walmart Super Center & Home Depot

Harrison Street 25,000 Cars Per Day



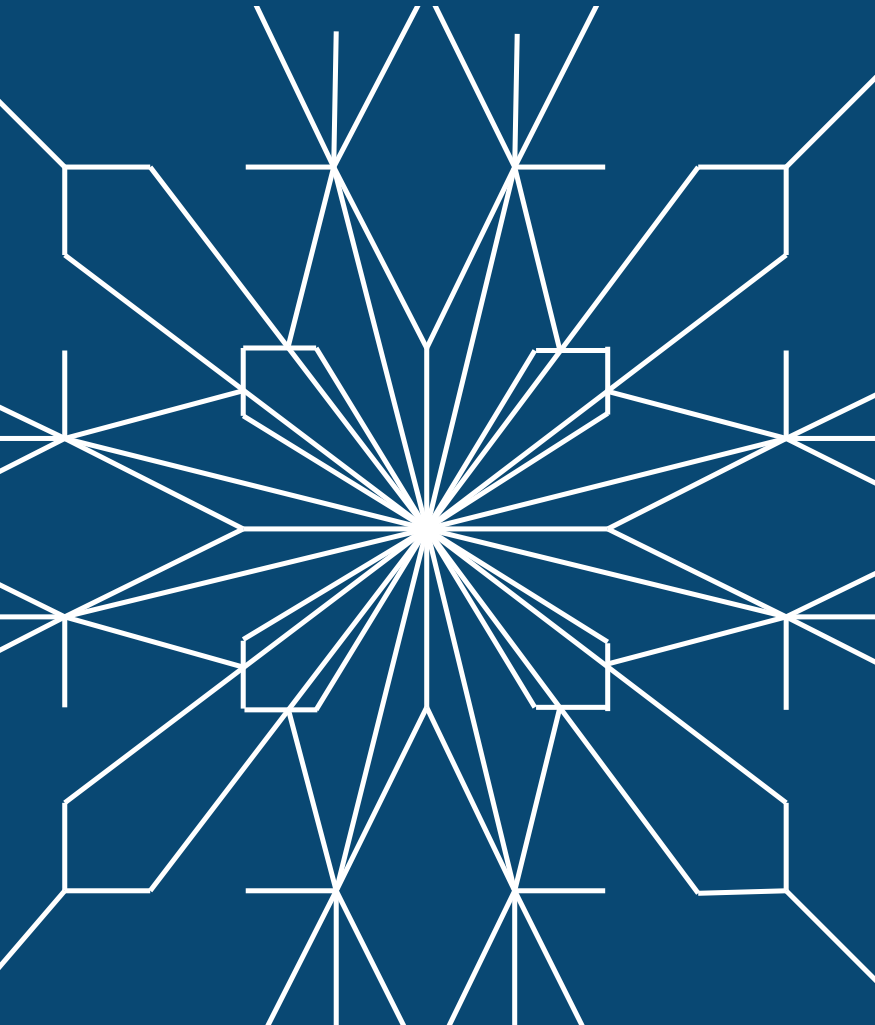
# 3050 HARRISON STREET, BATESVILLE, ARKANSAS

## TRAFFIC & RETAIL MAP



# 3050 HARRISON ST BATESVILLE, ARKANSAS

## INFOGRAPHICS



Population	1 Mile	3 Mile	5 Mile
2000 Population	1,374	8,868	17,602
2010 Population	1,617	9,755	18,955
2018 Population	1,766	10,280	19,749
2023 Population	1,824	10,471	20,038
2018 Median Age	42.8	39.5	39.2

Households	1 Mile	3 Mile	5 Mile
2000 Households	555	3,513	7,007
2010 Households	653	3,842	7,416
2018 Households	719	4,022	7,681
2023 Households	746	4,101	7,799
2018 Average Size	2.30	2.41	2.46

Income	1 Mile	3 Mile	5 Mile
2018 Median Household Income	\$69,920	\$48,716	\$44,805
2023 Median Household Income	\$72,738	\$53,355	\$50,236
2018 Average Household Income	\$117,318	\$77,630	\$66,252
2023 Average Household Income	\$126,441	\$87,417	\$75,109



VILLAGE COMMUNITIES

## RYAN GEORGE

Contact Information:  
RYANGEORGE72471@GMAIL.COM  
870.974.1249

2704 S Culberhouse Suite A  
Jonesboro, Arkansas 72401

All information furnished regarding property for sale or lease is from sources deemed reliable, but no warranty or representation is made as to the accuracy thereof and the same is subject to errors, omissions, changes of prices, rental or other conditions, prior sale or lease or withdrawal without notice.

