



The Strawberry Fields
DIGITAL HUB CHORLEY

Up to 3,700 m² (40,000 ft²) OF DIGITAL OFFICE SPACE TO LET

- ♥ FROM HOT-DESKING TO LARGE OFFICE SUITES
- ♥ HIGH-SPEED DATA CONNECTION
- ♥ FLEXIBLE LEASE TERMS
- ♥ EXCELLENT ACCESS FROM M61



PART FUNDED BY
European Union
European Regional
Development Fund



DESCRIPTION



The Strawberry Fields
DIGITAL HUB CHORLEY

GROUND FLOOR

FIRST FLOOR

SECOND FLOOR

LOCATION

GALLERY

CONTACT

DESCRIPTION

The Strawberry Fields Digital Hub is a brand new, state of the art, hi-tech business centre for digital and creative businesses, providing collaborative space and bespoke office suites, from new start-ups to growing SMEs. A range of office environments is being created to include hot-desking and innovation pods, micro offices for companies seeking flexibility and growth to larger office suites available on conventional lease terms. There will be access to training and meeting rooms, presentation facilities, hi-speed broadband, cloud storage and secure wi-fi plus on site business support with links to academia.



FEATURES INCLUDE:-

- 3,700 m² (40,000 ft²) of office space over ground, first and second floors
- Availability from a single hot desk to a large office suite
- Meeting, training and networking rooms
- On site centre manager
- Flexible terms and immediate occupancy
- BREEAM Excellent accreditation
- Air conditioned
- Full access raised floors
- Passenger lift
- Fully DDA compliant
- Secure on-site parking
- Cycle hub and shower facilities
- Communal kitchen/break out areas
- Secure, landscaped site

DESCRIPTION



The Strawberry Fields
DIGITAL HUB CHORLEY

GROUND FLOOR

FIRST FLOOR

SECOND FLOOR

LOCATION

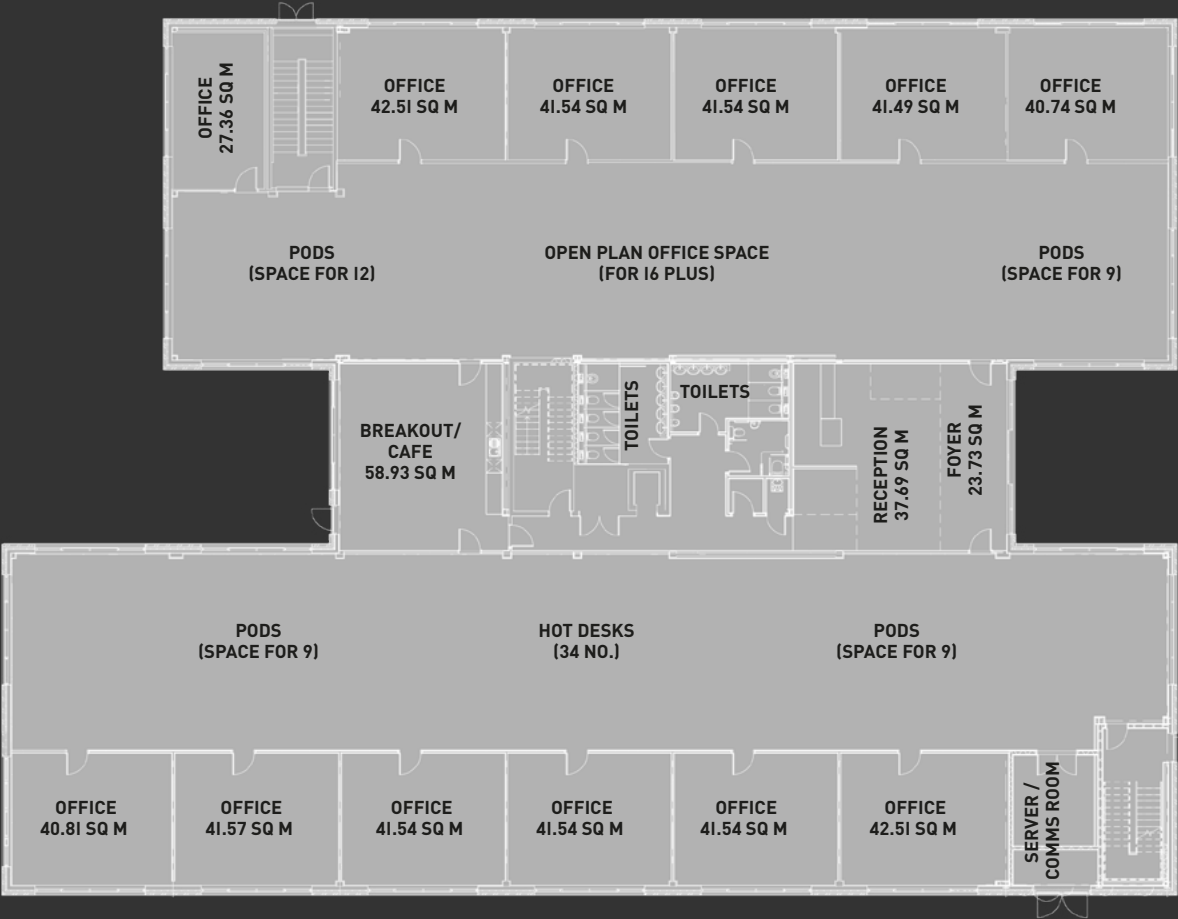
GALLERY

CONTACT

GROUND FLOOR

The ground floor provides collaborative office space, with a range of hot desking, micro pods and small office suites. These options will allow start-ups and SME's to work alongside each other in an innovative, supportive and vibrant environment. On site business

support will be provided by a Business Advisor and University Advisor, with the latter providing connectivity to academia. Immediate occupancy and flexible terms are available to allow for future growth and expansion within Strawberry Fields.



DESCRIPTION



The Strawberry Fields
DIGITAL HUB CHORLEY

GROUND FLOOR

FIRST FLOOR

SECOND FLOOR

LOCATION

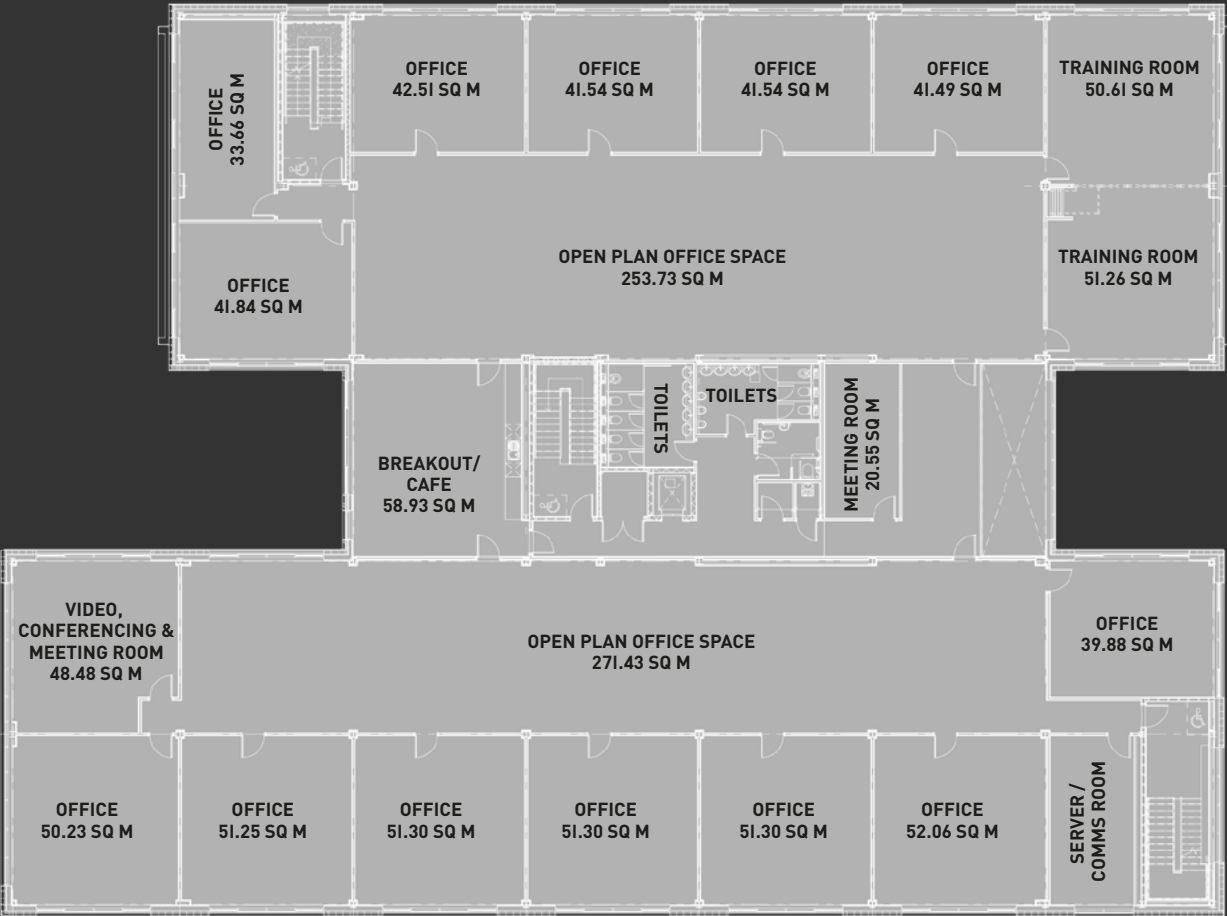
GALLERY

CONTACT

FIRST FLOOR

The first floor comprises small office suites for growing companies alongside open plan office space. This is ideal for businesses wanting their own space, with the potential for future

expansion within the building. These small offices range in size from 2 to 20 staff and are available on flexible terms.



DESCRIPTION

GROUND FLOOR

FIRST FLOOR

SECOND FLOOR

LOCATION

GALLERY

CONTACT

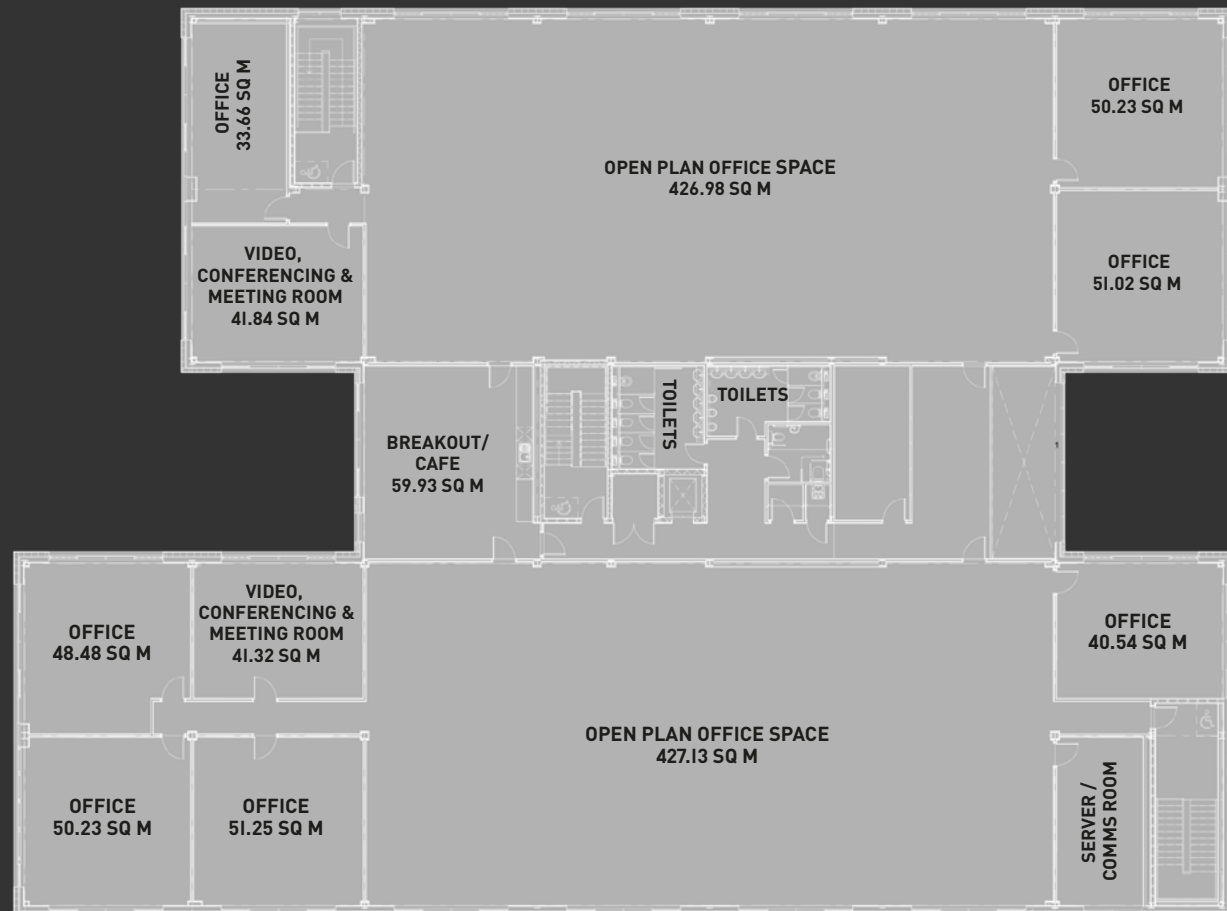


The Strawberry Fields
DIGITAL HUB CHORLEY

SECOND FLOOR

The second floor of Strawberry Fields provides two self-contained office suites of approximately 562 m² (6050 ft²) and 618 m² (6650 ft²) which could combine to form a single office of approximately 1180 m² (12,700 ft²). Lease terms can be tailored to

meet the tenant's requirements with occupiers able to incorporate their own style of layout into the open plan space available. The break-out/kitchen and meeting rooms will be fitted out as part of the overall scheme.



DESCRIPTION

GROUND FLOOR

FIRST FLOOR

SECOND FLOOR

LOCATION

GALLERY

CONTACT



The Strawberry Fields
DIGITAL HUB CHORLEY

LOCATION

Strawberry Fields is ideally situated off Euxton Lane (B5252) to the north of Chorley town centre, just off J8 M61, providing immediate access to the region's motorway network. Buckshaw Parkway, Euxton Balshaw Lane and Chorley Railway Stations are all within easy reach and the scheme is well served by a number of local and regional bus routes.

[VIEW THE CHECK OUT CHORLEY VIDEO](#) 

[CLICK HERE TO VIEW MAPS](#)

[CLICK HERE TO VIEW AERIAL](#)



DESCRIPTION

GROUND FLOOR

FIRST FLOOR

SECOND FLOOR

LOCATION

GALLERY

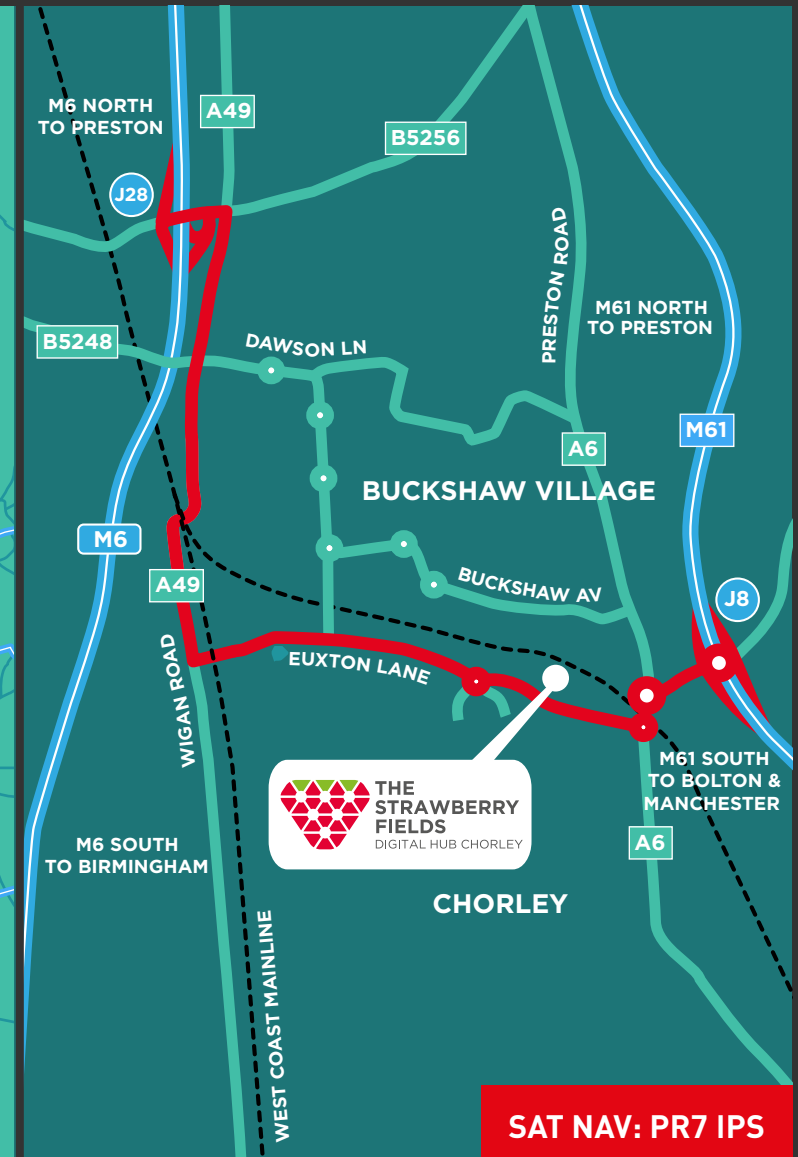
CONTACT



The Strawberry Fields
DIGITAL HUB CHORLEY

MAPS

[CLICK HERE TO VIEW AERIAL](#)



SAT NAV: PR7 IPS

DESCRIPTION

GROUND FLOOR

FIRST FLOOR

SECOND

LOCATION

GALLERY

CONTACT



The Strawberry Fields
DIGITAL HUB CHORLEY

AERIAL

[CLICK HERE TO VIEW MAPS](#)



DESCRIPTION



The Strawberry Fields
DIGITAL HUB CHORLEY

GALLERY

[CLICK FOR MORE IMAGES](#)

GROUND FLOOR

FIRST FLOOR

SECOND FLOOR

LOCATION

GALLERY

CONTACT



DESCRIPTION



The Strawberry Fields
DIGITAL HUB CHORLEY

GALLERY

GROUND FLOOR

FIRST FLOOR

SECOND FLOOR

LOCATION

GALLERY

CONTACT



DESCRIPTION

GROUND FLOOR

FIRST FLOOR

SECOND FLOOR

LOCATION

GALLERY

CONTACT



The Strawberry Fields
DIGITAL HUB CHORLEY

CONTACT

For further details please contact the joint letting agents JLL and Robert Pinkus & Company:



RICHARD WHARTON

0161 238 6227

07970 938 698

richard.wharton@eu.jll.com



DANNY PINKUS

01772 769 000

07971 200 015

danny@pinkus.co.uk



Chorley
Council



PART FUNDED BY
European Union
European Regional
Development Fund



IMPORTANT NOTICE JLL and Robert Pinkus & Co give notice to anyone who may read these particulars as follows: 1. These particulars are prepared for the guidance only of prospective purchasers. They are intended to give a fair overall description of the property but are not intended to constitute part of an offer or contract. 2. Any information contained herein (whether in the text, plans or photographs) is given in good faith but should not be relied upon as being a statement or representation of fact. 3. Nothing in these particulars shall be deemed to be a statement that the property is in good condition or otherwise nor that any services or facilities are in good working order. 4. The photographs appearing in this brochure show only certain parts and aspects of the property at the time when the photographs were taken. Certain aspects may have changed since the photographs were taken and it should not be assumed that the property remains precisely as displayed in the photographs. Furthermore no assumptions should be made in respect of parts of the property which are not shown in the photographs. 5. Any areas, measurements or distances referred to herein are approximate only. 6. Where there is reference in these particulars to the fact that alterations have been carried out or that a particular use is made of any part of the property this is not intended to be a statement that any necessary planning, building regulations or other consents have been obtained and these matters must be verified by any intending purchaser. 7. Descriptions of a property are inevitably subjective and the descriptions contained herein are used in good faith as an opinion and not by way of statement of fact. Published September 2018.

0161 387 7252