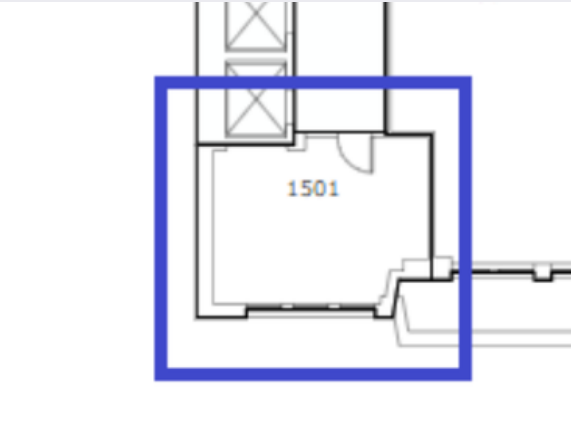


262 WEST 38TH STREET



As exclusive agents for the building we are pleased to present

SUITE: 1501
SIZE: 499 RSF
ASKING RENT: Inquire
LAYOUT: Open



PROPERTY OVERVIEW



ABOUT THIS PROPERTY

- Shared conference room for all tenants
- Common kitchen with breakout area
- Pilot high-speed internet
- 10' ceilings

FEATURES

- ✔ Attended lobby (business hours) with 24/7 keycard access
- ✔ 2 passenger and 2 freight elevators
- ✔ Flexible lease term and sizes
- ✔ Newly renovated spaces and hallways

CONTACT DETAILS

LEASING AGENTS:

Joshua Winslow

☎ 917-450-4538

✉ josh@way2winnyc.com

Philippe Lesbre

☎ 646-610-0373

✉ philippe@way2winnyc.com

OWNERSHIP:

Silver Eight Capital

✉ info@silvereightcapital.com

Although information contained herein has been obtained from sources deemed reliable, neither Way2Win Management, Silver Eight Capital, nor any of their clients make any guarantees or representations, express or implied, as to the completeness or accuracy of such information. Neither Way2Win Management, Silver Eight Capital, nor any of their clients accepts any liability for loss resulting from reliance on such information. Any property offered for lease may be withdrawn without notice.