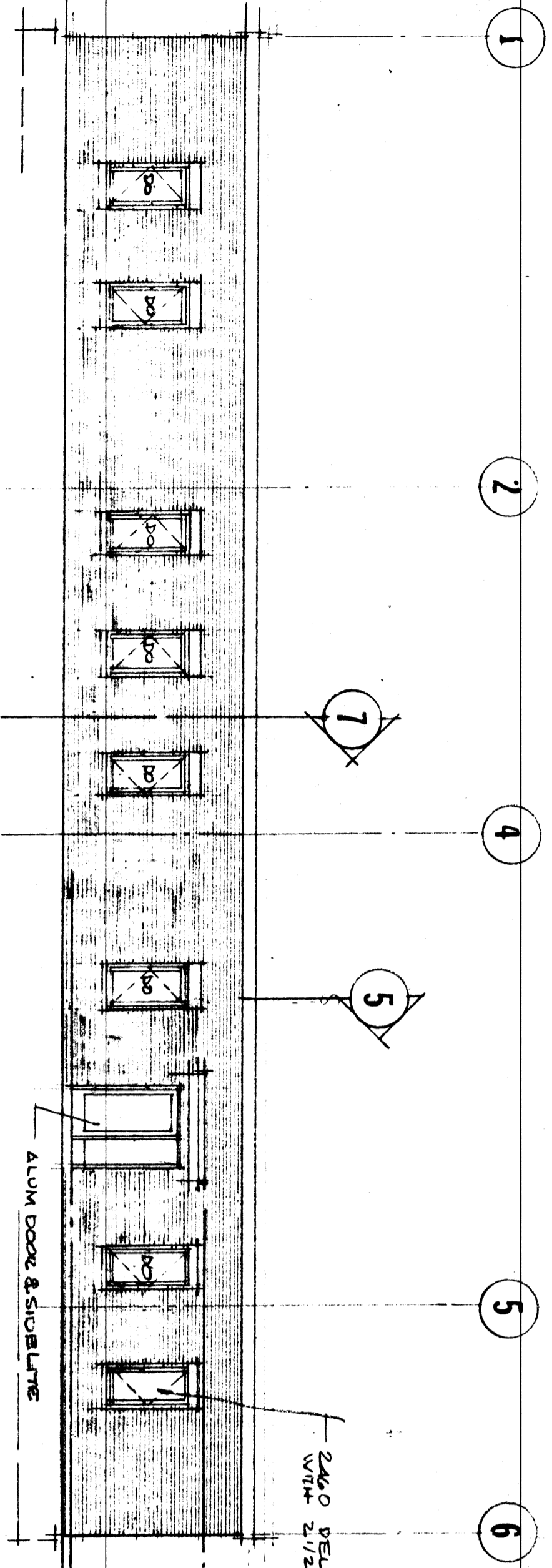
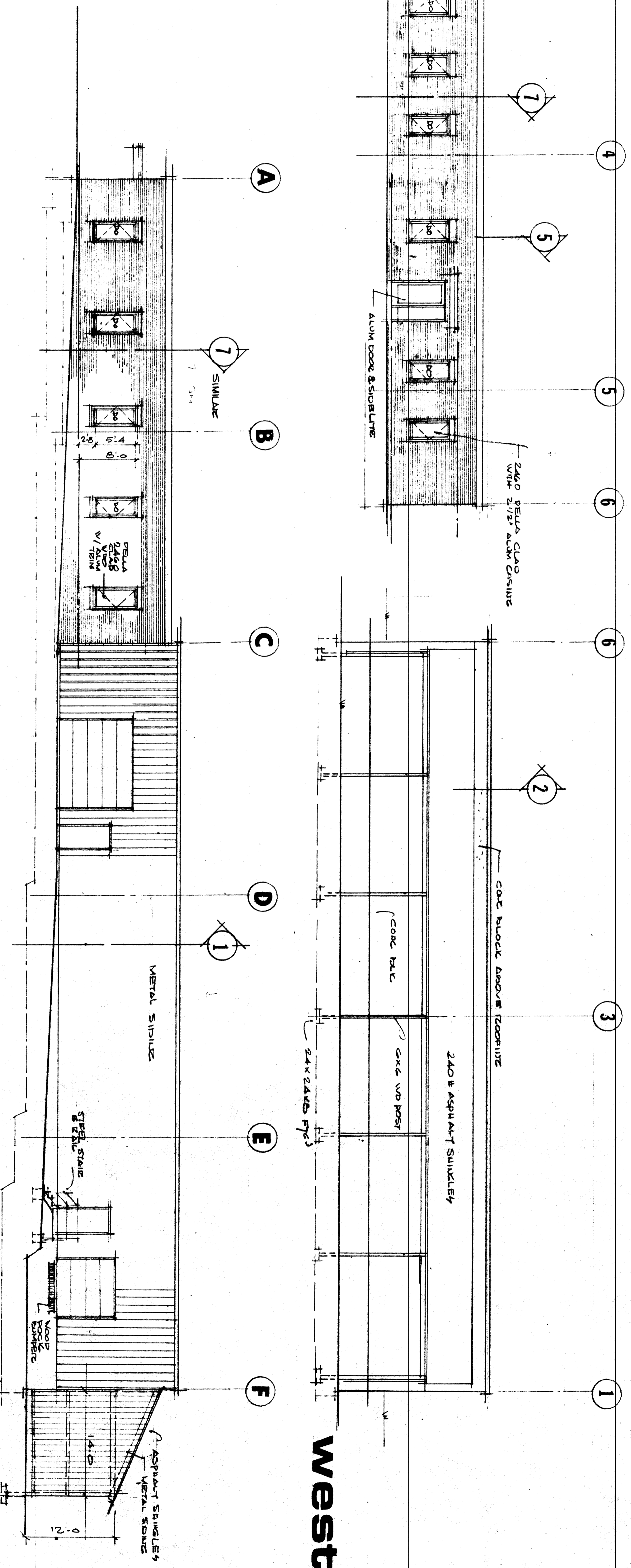


south



east



north

west

ELEVATIONS

SCALE: 1/8" = 1'-0" APPROVED BY: [Signature]
 DATE: [Blank]
 DRAWN BY: [Blank]
 GEORGETTE SALES
 CLEVELAND, OH.
 DRAWING NUMBER: [Blank]

3 NOV 80
 2:51 PM
 4 DWG
 ZOMBARC 80

