

# FOR LEASE

## Orchards Plaza

**1,200, 1,739 and 1,750 SF Retail Spaces**

Can Combine Suites C-1 & C-2 for 3,489 SF

11500 NE 76th Street • Vancouver, WA 98662



### Features:

- 1,200 SF in Bldg, A, Suite A-2
- 1,750 SF in Bldg, C, Suite C-1
- 1,739 SF in Bldg. C, Suite C-2
- Suites C-1 & C-2 can be combined for 3,489 SF
- Various retail tenants at property
- High visibility

Easy access to: SR 503 (NE 117th Ave.),  
Fourth Plain Rd., SR 500 and I-205.

### Rates:

\$18.00/PSF/Year Base Rent plus  
\$6.00/PSF/Year NNN Rates

For more information contact  
**Coleman Brown**  
at **(360) 735-8001**  
[www.CCPprop.com](http://www.CCPprop.com)

9120 NE VANCOUVER MALL LOOP, SUITE # 210  
VANCOUVER, WA 98662  
PO BOX 820406, VANCOUVER, WA 98682  
PH: (360) 735-8001  
FX: (360) 735-8033

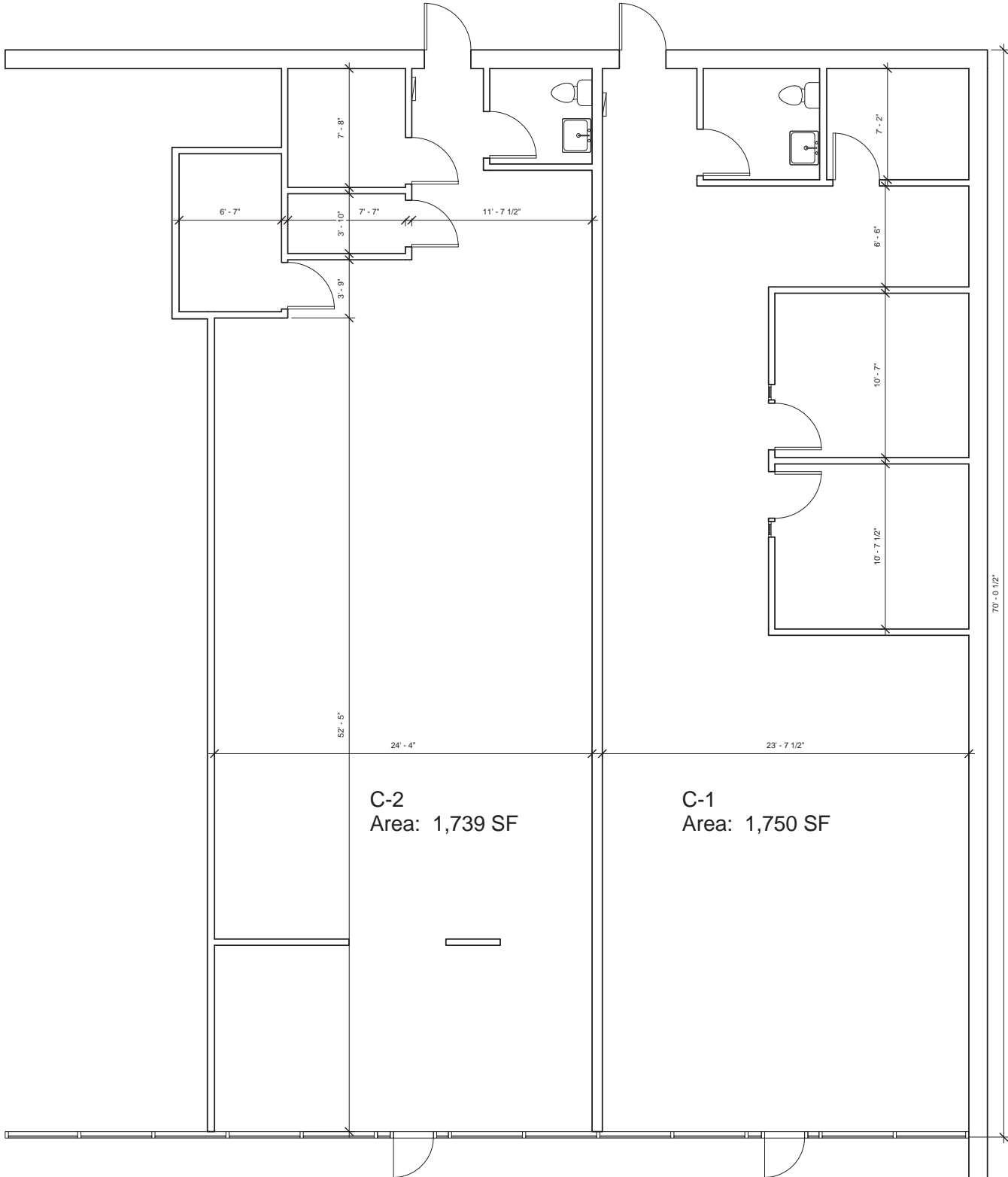


1672 WILLAMETTE FALLS DRIVE, SUITE #E  
WEST LINN, OR 97068  
PO BOX 46, WEST LINN, OR 97068  
PH: (503) 968-2262  
FX: (503) 650-5343

**COLUMBIA COMMERCIAL PROPERTIES, LLC**  
[www.CCPprop.com](http://www.CCPprop.com)

The information contained herein has been obtained from sources we deem reliable.  
We do not, however, guarantee its accuracy. All information should be verified prior to purchase or lease.

# Floor Plan



11500 NE 76th Street  
Vancouver WA 88662

**Total of 3,489 Combined SF  
in Suites C-1 & C-2**



**Aerial Map - Orchards Plaza - 11500 NE 76th St., Vancouver, WA 98662**

