



WESTFIELD INDUSTRIAL WAREHOUSES

1077 WEST 130 SOUTH | LOGAN | UTAH | 84321

PRICE: \$0.50/SF NNN

AVAILABLE

PROPERTY HIGHLIGHTS

- 16,800 SF AVAILABLE
- DIVISIBLE FROM 2,100 SF TO 10,500 SF
- 14'X14' GROUND LEVEL DOORS
- 21 FOOT CLEARANCE HEIGHTS
- SEPARATE METERS
- THREE PHASE POWER
- NEW CONSTRUCTION



INTERSTATE COMMERCIAL
PROPERTIES
COMMERCIAL REAL ESTATE SERVICES

CONTACT

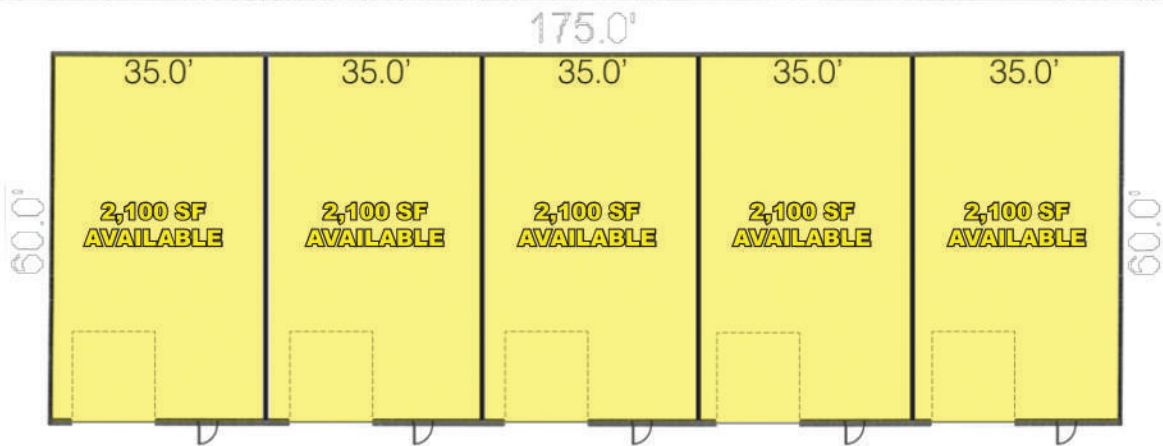
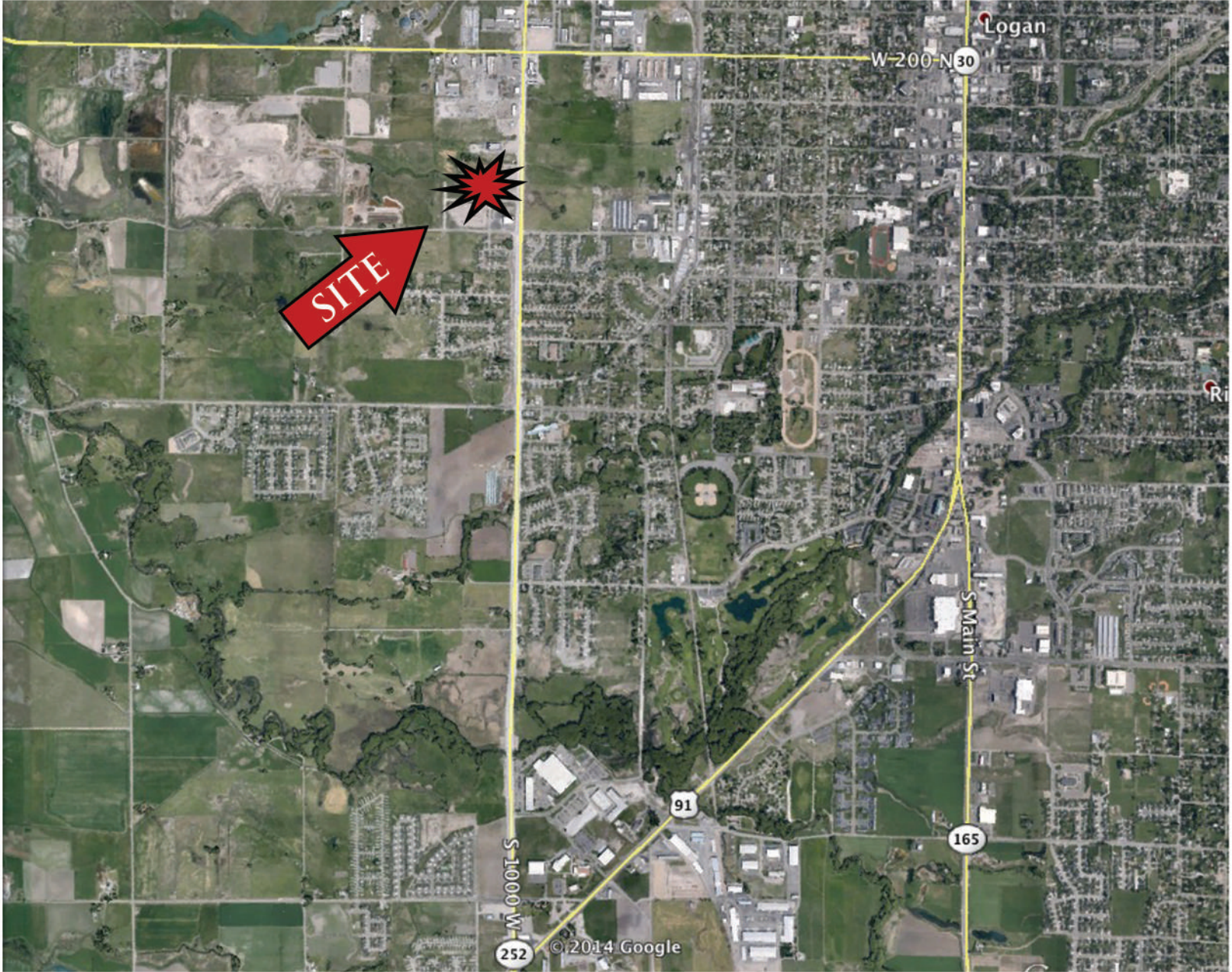
RYAN REEVES
435.757.4445
RYANR@INTERSTATECP.COM

TREVOR KYLE
801.815.7255
TREVORK@INTERSTATECP.COM



WESTFIELD INDUSTRIAL WAREHOUSES

1077 WEST 130 SOUTH | LOGAN | UTAH | 84321



255 SOUTH MAIN STREET SUITE 100 | LOGAN, UT 84321
OFFICE 435.755.9494 | FAX 435.752.9699

WWW.INTERSTATECP.COM