

FOR LEASE > OFFICE BUILDING

895 East Walnut Street

RAYMORE, MISSOURI



## Property Features

- > Square footage: 3,111
- > Outstanding executive office space
- > Signage available
- > Excellent owner-user asset
- > High-end finishes
- > Lease rate: \$10.00/SF, MG

REAGAN O'TOOLE  
+1 816 556 1120  
KANSAS CITY, MO  
reagan.otoole@colliers.com

JIM GATES, SIOR  
+1 816 556 1138  
KANSAS CITY, MO  
jim.gates@colliers.com

COLLIERS INTERNATIONAL  
4520 Main Street, Suite 1000  
Kansas City, MO 64111  
www.colliers.com

## 895 EAST WALNUT STREET > PHOTOS



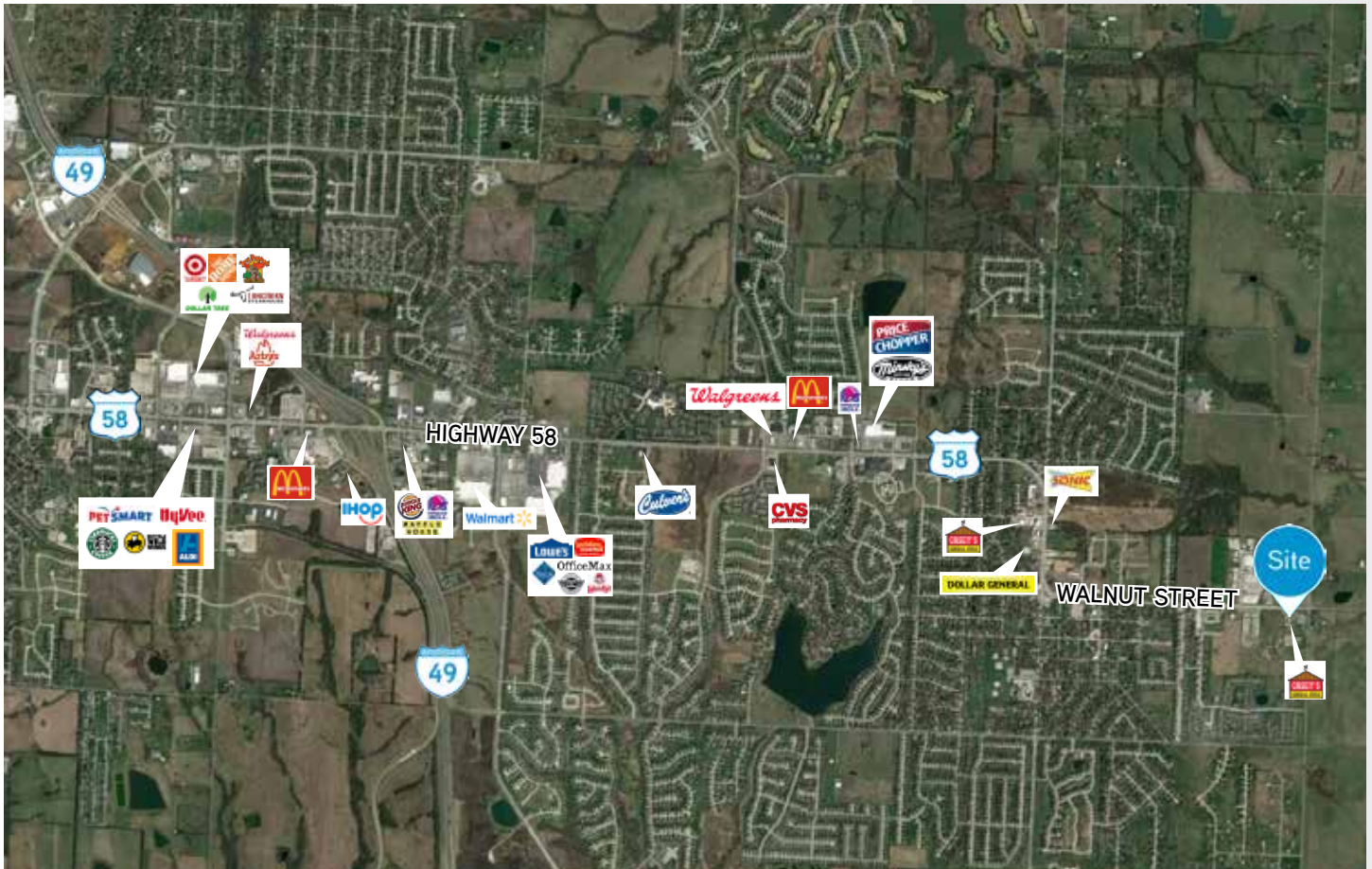
REAGAN O'TOOLE  
+1 816 556 1120  
KANSAS CITY, MO  
reagan.otoole@colliers.com

JIM GATES, SIOR  
+1 816 556 1138  
KANSAS CITY, MO  
jim.gates@colliers.com

COLLIERS INTERNATIONAL  
4520 Main Street, Suite 1000  
Kansas City, MO 64111  
www.colliers.com



## 895 EAST WALNUT STREET > AERIAL



REAGAN O'TOOLE  
+1 816 556 1120  
KANSAS CITY, MO  
[reagan.otoole@colliers.com](mailto:reagan.otoole@colliers.com)

JIM GATES, SIOR  
+1 816 556 1138  
KANSAS CITY, MO  
[jim.gates@colliers.com](mailto:jim.gates@colliers.com)

Please contact us to see this property

COLLIERS INTERNATIONAL  
4520 Main Street, Suite 1000  
Kansas City, MO 64111  
[www.colliers.com](http://www.colliers.com)

This document has been prepared by Colliers International for advertising and general information only. Colliers International makes no guarantees, representations or warranties of any kind, expressed or implied, regarding the information including, but not limited to, warranties of content, accuracy and reliability. Any interested party should undertake their own inquiries as to the accuracy of the information. Colliers International excludes unequivocally all inferred or implied terms, conditions and warranties arising out of this document and excludes all liability for loss and damages arising there from. This publication is the copyrighted property of Colliers International and/or its licensor(s). ©2017. All rights reserved.

