

FOR LEASE

Elite High Traffic Multi/Single
Unit Warehouse
5402 Austin Court
Ringwood, IL 60072



BUILDING SPECIFICATIONS

- Building: 14,249 SF
- Unit 1: 1,250 SF Leased
- Unit 2: 13,000 SF
- OH Doors: Two 12 x 12
One 14 x 12
- Foundation: Concrete Slab
- Ceilings: 20'
- Land: 2.03 Acres
- Warehouse: Gas Heat
- Electrical: 3 Panels 3 Phase
- Rt 31 Frontage: 375 ft
- 2 Story Multi Use Office
- Kitchen
- Parking: Ample
- Large Restrooms with Lockers
- Outdoor Storage Negotiable
- Zoning: M-1
- PIN: 09-04-402-012

LEASE RATE \$11 SF

**BERKSHIRE
HATHAWAY**
HOMESERVICES

STARCK
REAL ESTATE

COMMERCIAL DIVISION

Jack Minero, Broker
JMinero@StarckRE.com
815.382.9728

Elizabeth DeMeo, Broker
EDeMeo@StarckRE.com
815.260.9042

StarckRE.com
330 W. Virginia Street, Crystal Lake, IL 60014

Information not verified or guaranteed. ©2025 BHH Affiliates, LLC. An independently owned and operated franchisee of BHH Affiliates, LLC. Berkshire Hathaway HomeServices and the Berkshire Hathaway HomeServices symbol are registered service marks of Columbia Insurance Company, a Berkshire Hathaway affiliate. 🏠



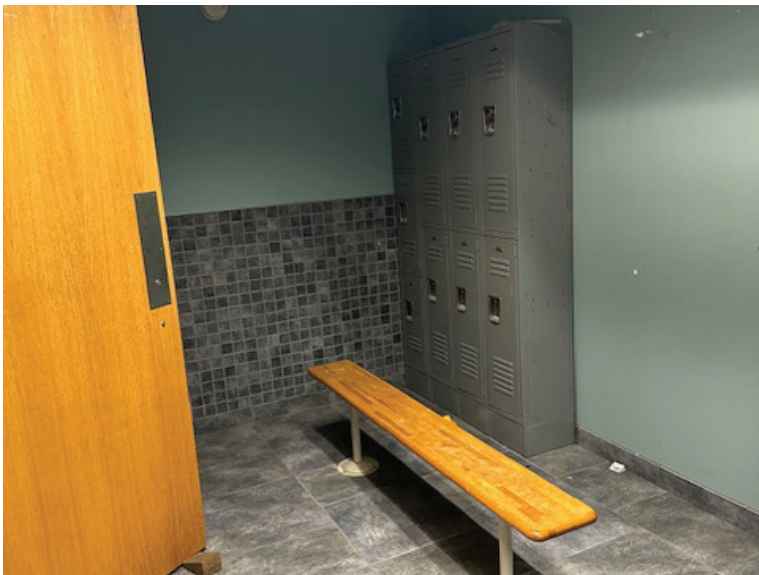
**BERKSHIRE
HATHAWAY**
HOMESERVICES

STARCK
REAL ESTATE

COMMERCIAL DIVISION

Gary Lang Warehouse
StarckRE.com

Information not verified or guaranteed. ©2025 BHH Affiliates, LLC. An independently owned and operated franchisee of BHH Affiliates, LLC. Berkshire Hathaway HomeServices and the Berkshire Hathaway HomeServices symbol are registered service marks of Columbia Insurance Company, a Berkshire Hathaway affiliate. 🏠



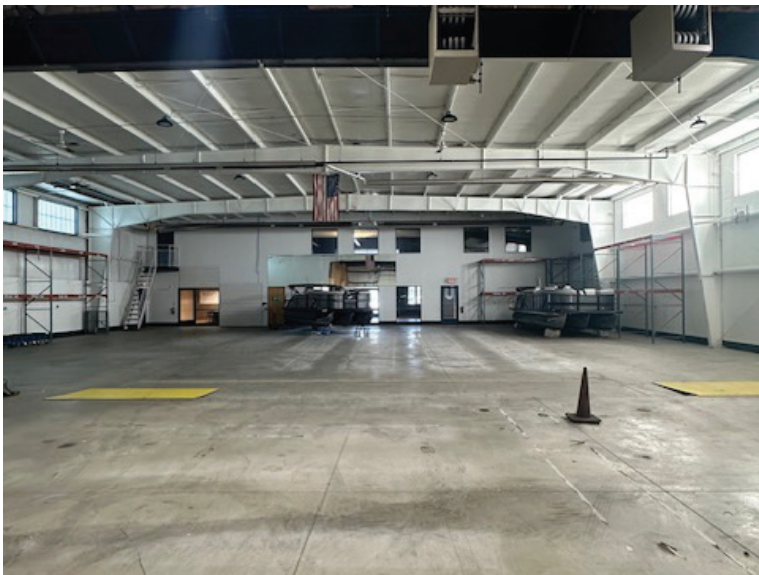
**BERKSHIRE
HATHAWAY**
HOMESERVICES

STARCK
REAL ESTATE

COMMERCIAL DIVISION

Gary Lang Warehouse
StarckRE.com

Information not verified or guaranteed. ©2025 BHH Affiliates, LLC. An independently owned and operated franchisee of BHH Affiliates, LLC. Berkshire Hathaway HomeServices and the Berkshire Hathaway HomeServices symbol are registered service marks of Columbia Insurance Company, a Berkshire Hathaway affiliate. 🏠



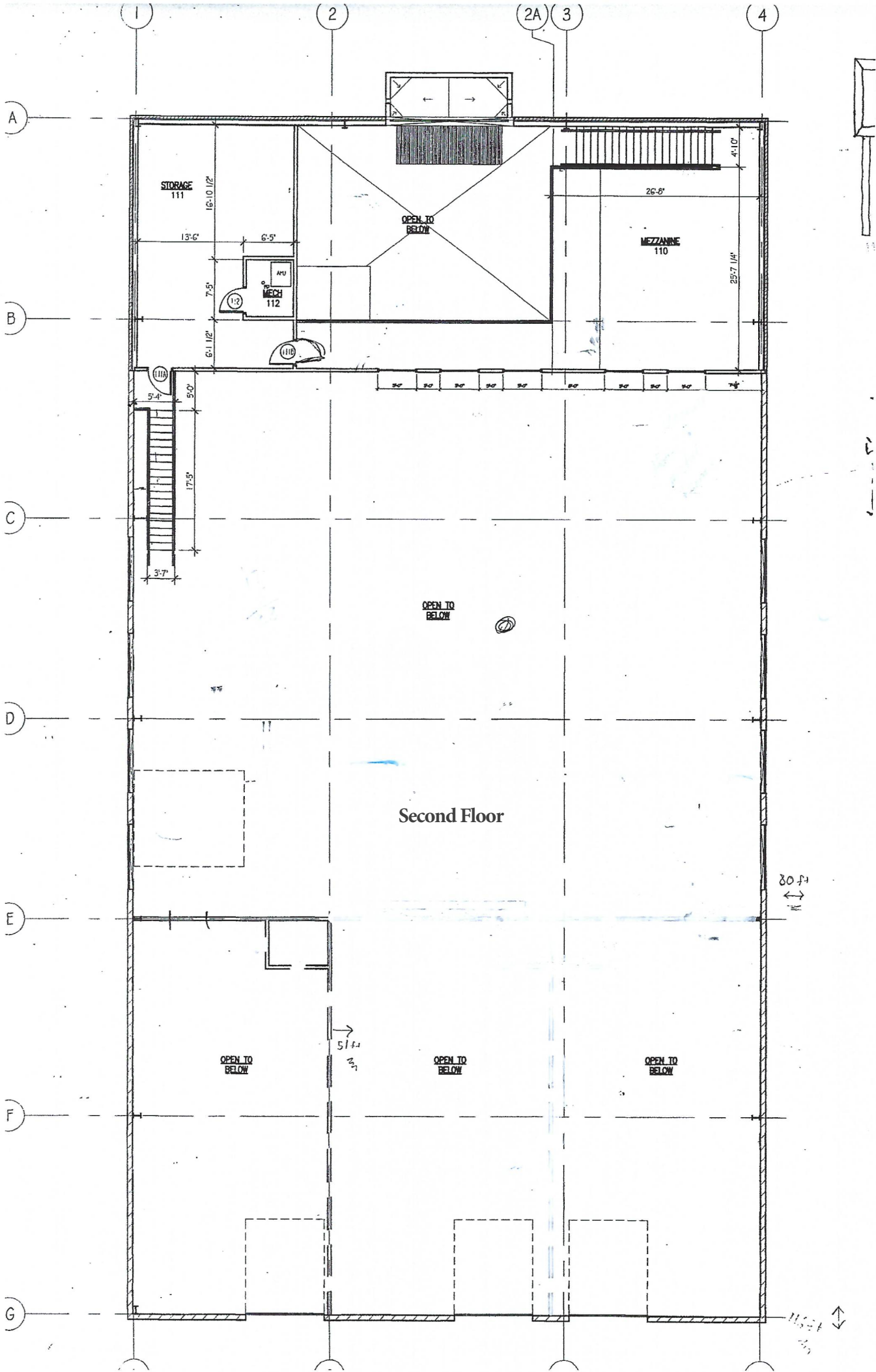
**BERKSHIRE
HATHAWAY**
HOMESERVICES

STARCK
REAL ESTATE

COMMERCIAL DIVISION

Gary Lang Warehouse
StarckRE.com

Information not verified or guaranteed. ©2025 BHH Affiliates, LLC. An independently owned and operated franchisee of BHH Affiliates, LLC. Berkshire Hathaway HomeServices and the Berkshire Hathaway HomeServices symbol are registered service marks of Columbia Insurance Company, a Berkshire Hathaway affiliate. 🏠



Second Floor

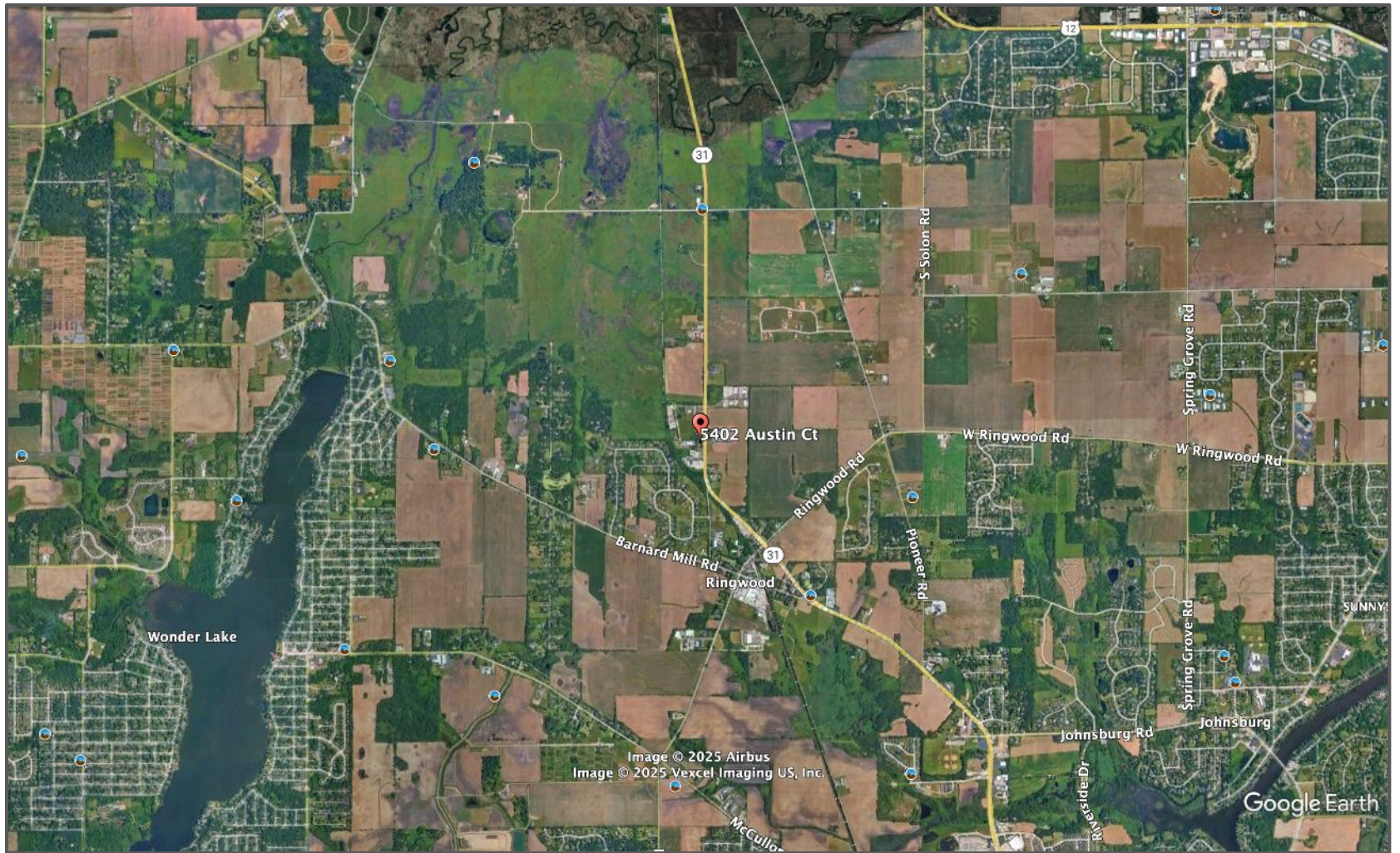
OPEN TO BELOW

OPEN TO BELOW

OPEN TO BELOW

80 ft
↔

115 ft
↕





5402 Austin Ct

Image © 2025 Vexcel Imaging US, Inc.

Google Earth



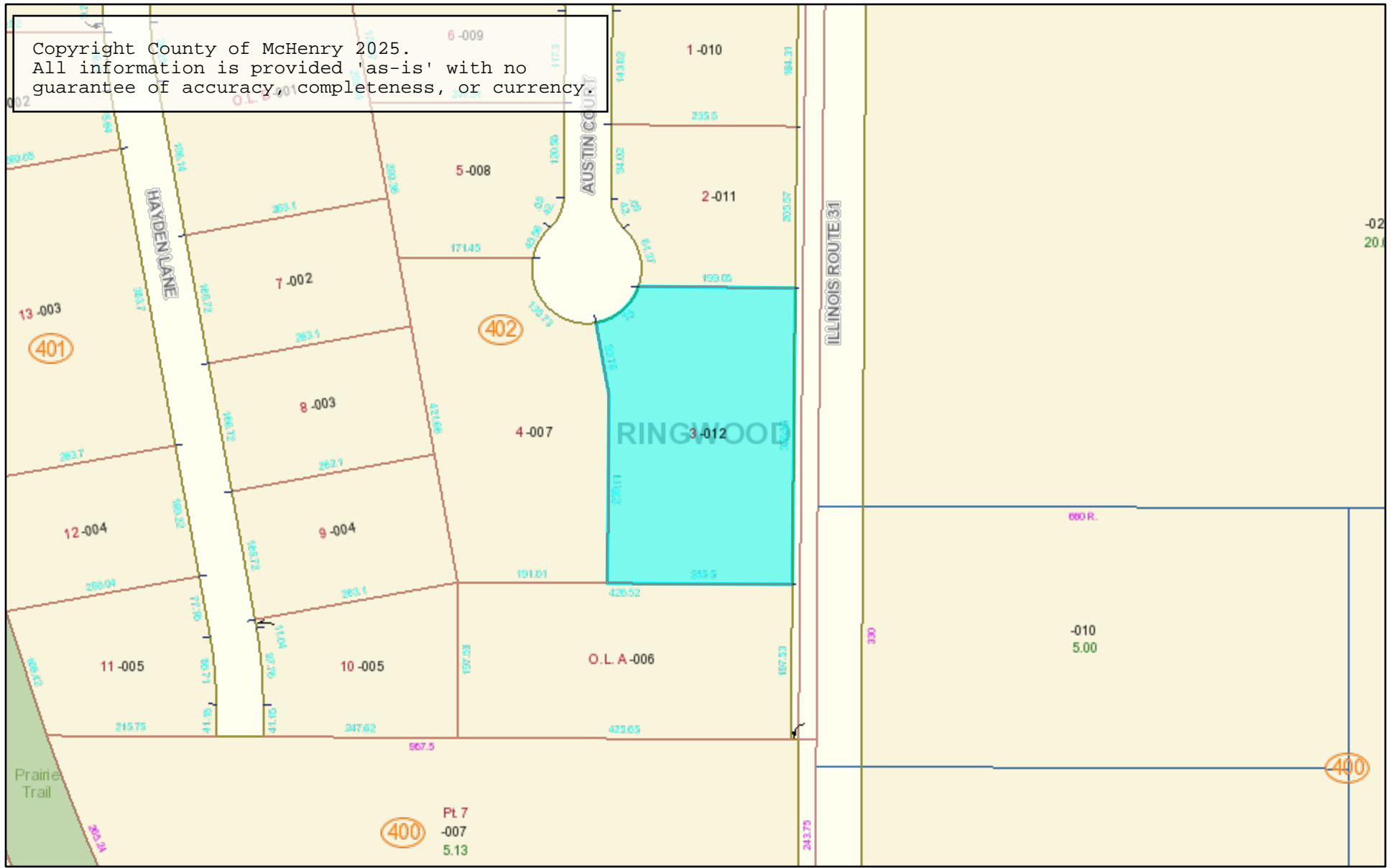
5401

5402 Austin Ct

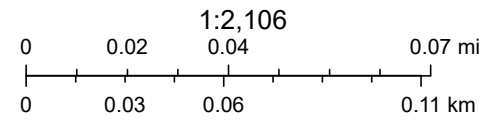
Image © 2025 Vexcel Imaging US, Inc.

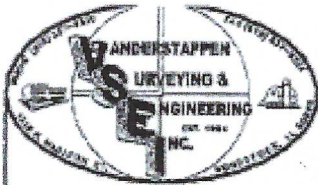
Google Earth

Copyright County of McHenry 2025.
All information is provided 'as-is' with no
guarantee of accuracy, completeness, or currency.



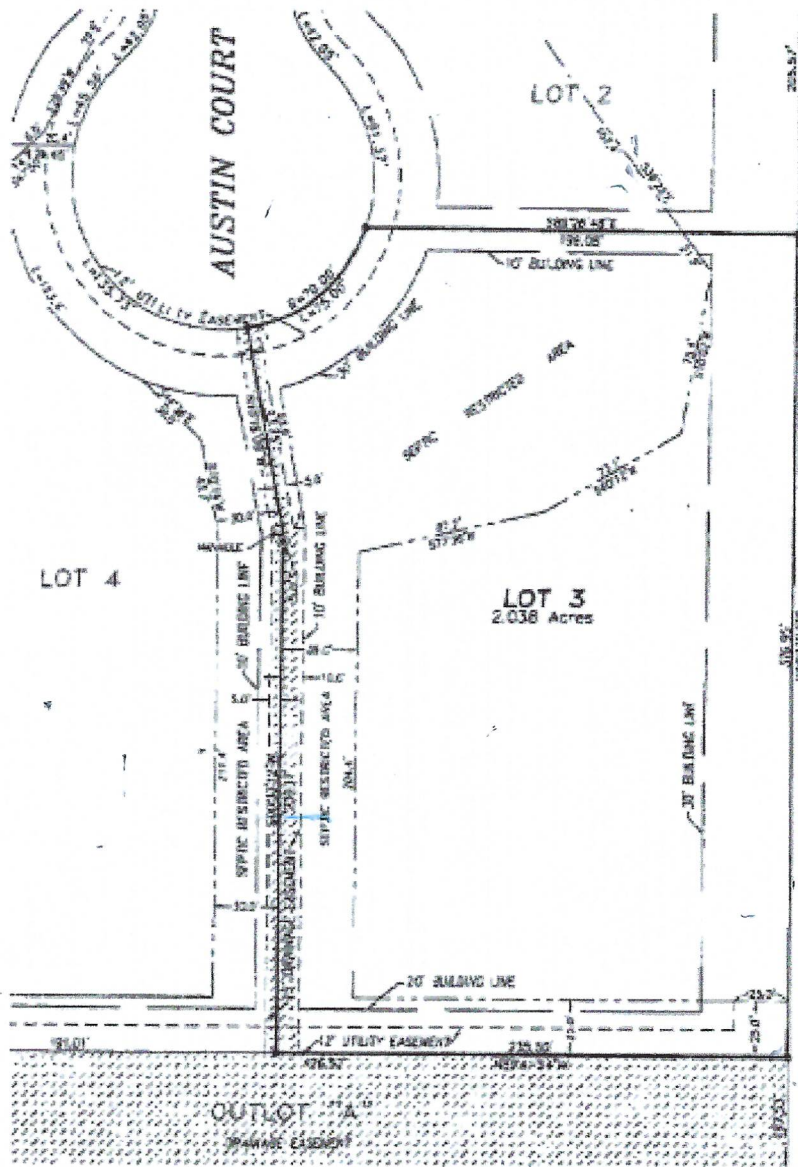
April 24, 2025





PLAT OF SURVEY

Lot 3 in Gayer Business Park, being that part of the Southeast Quarter of Section 4, Township 45 North, Range 8, East of the Third Principal Meridian, according to the plat thereof, recorded February 29, 2000 as Document No. 2000R000275, in McHenry County, Illinois.



STATE ROUTE 31



LEGEND	
● FOUND IRON BAR	○ SET IRON BAR
● FOUND SPK	○ SET SPK

NOTE: Only those Building Line Restrictions or Easements shown on a Recorded Subdivision Plat are shown herein.

STATE OF ILLINOIS)
 COUNTY OF MCHENRY) S.S. CHAD D. HOWARD
 In my professional opinion and based on my observations, I hereby certify that we have surveyed the premises above described, and that the plat herein is a true representation of said premises. My professional seal conforms to the