

INDUSTRIAL SPACE

FOR SUBLEASE



AVAILABLE SEPTEMBER 1, 2021



12937 NE Airport Way | Portland, OR

SITE SPECS

&

INFORMATION

- » 26,800 SF Shell
- » 2,500 SF Office
- » 8 Dock Doors
- » 5 Grade Doors
- » 24' Clear Height
- » IG2 Zoning

- » Stand-Alone Building
- » Concrete Tilt Construction / Built 1996
- » Column Spacing 35' x 45'
- » 400a / 240v 3-Phase Power
- » Current Lease Expires January 31, 2024
- » Sublease Rate \$0.58/\$0.90 / Est. NNNs \$0.21

CONTACT US

CAPACITY COMMERCIAL GROUP 805 SW Broadway, Suite 700 Portland, OR | 97205

PHONE. 503.326.9000 | WEB. www.capacitycommercial.com

DON OSSEY, SIOR
Principal

P. 503.542.4344
E. don@capacitycommercial.com

TOM KNECHT
Associate Broker

P. 503.542.2907
E. tom@capacitycommercial.com

STEPHEN OSSEY
Associate Broker

P. 503.542.4027
E. stephen@capacitycommercial.com

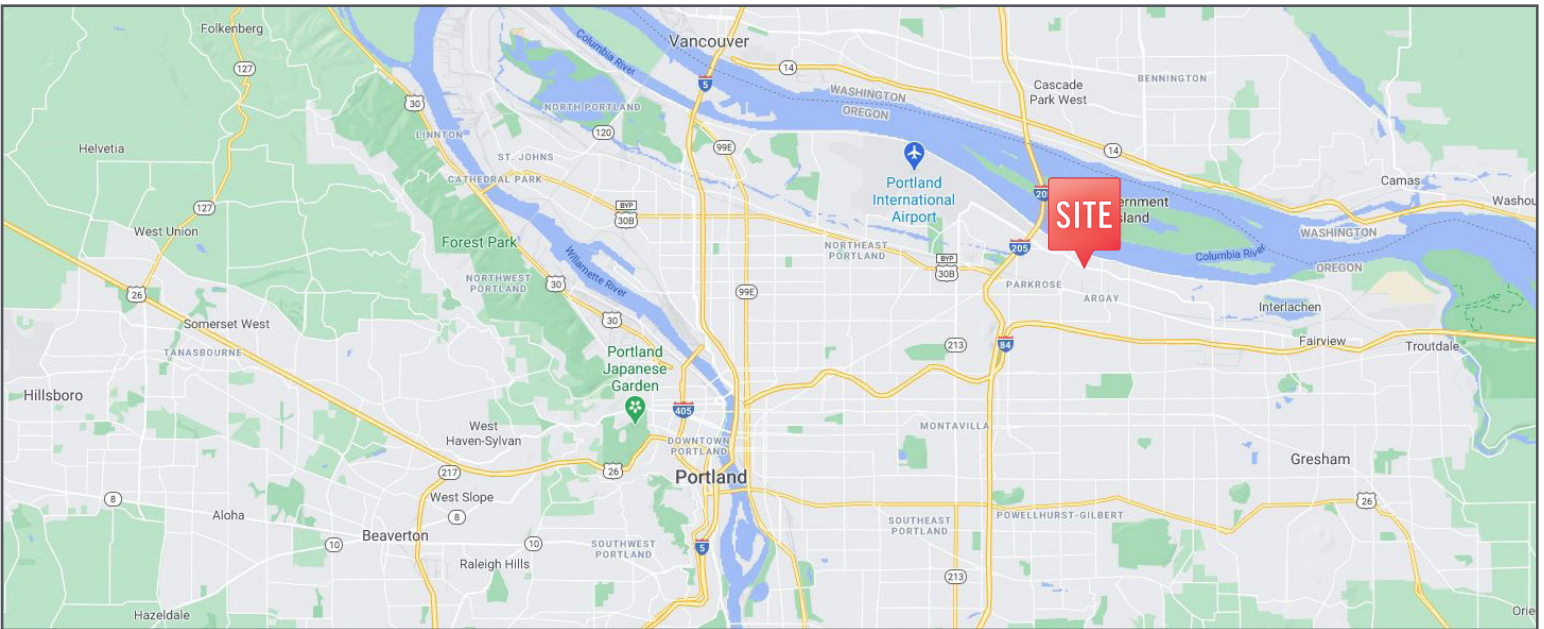
— Proud member of: —

CORFAC
International

The information contained herein is believed to be accurate but is not warranted as to its accuracy and may change or be updated without notice. Seller or Landlord makes no representation as to the environmental condition of the property and recommends purchaser's or tenant's independent investigation.



INDUSTRIAL SPACE FOR SUBLEASE



CONTACT US

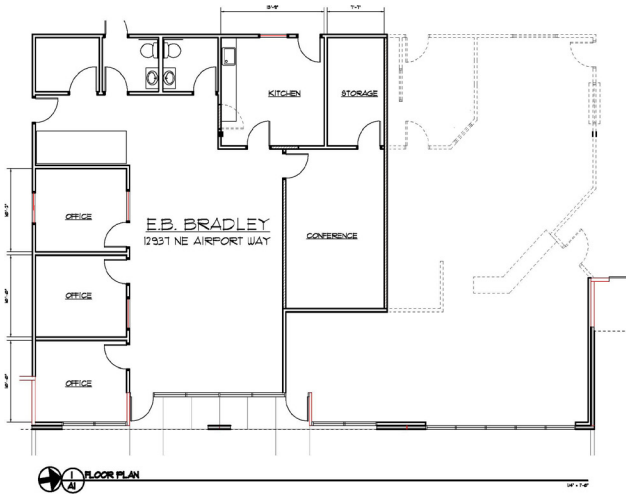
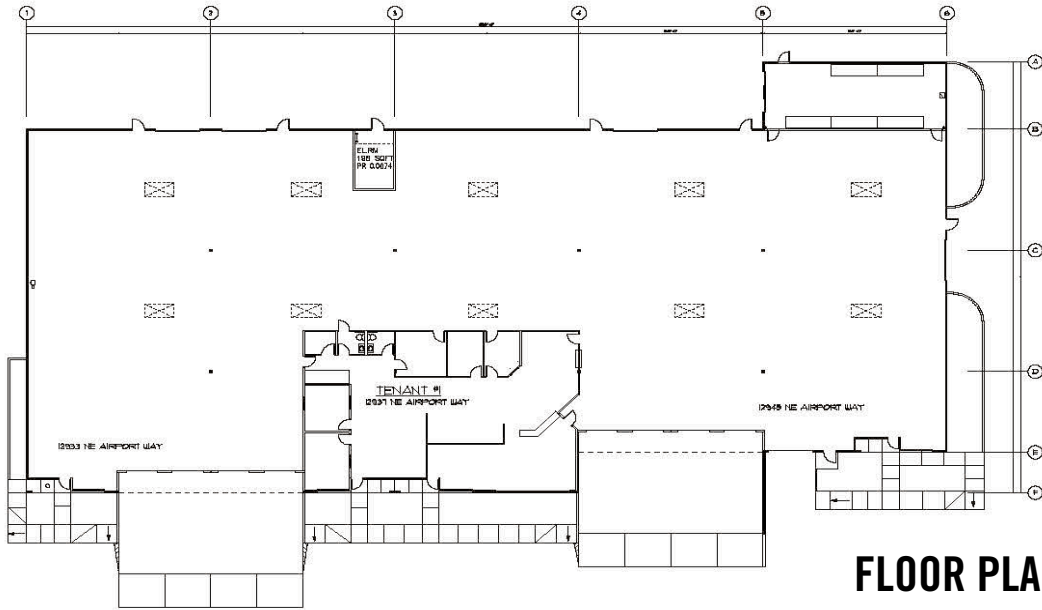
CAPACITY COMMERCIAL GROUP 805 SW Broadway, Suite 700 Portland, OR | 97205
PHONE. 503.326.9000 | WEB. www.capacitycommercial.com

DON OSSEY, SIOR
Principal
P. 503.542.4344
E. don@capacitycommercial.com

TOM KNECHT
Associate Broker
P. 503.542.2907
E. tom@capacitycommercial.com

STEPHEN OSSEY
Associate Broker
P. 503.542.4027
E. stephen@capacitycommercial.com

FOR SUBLEASE



CONTACT US

CAPACITY COMMERCIAL GROUP 805 SW Broadway, Suite 700 Portland, OR | 97205

PHONE. 503.326.9000 | WEB. www.capacitycommercial.com

DON OSSEY, SIOR
Principal

P. 503.542.4344
E. don@capacitycommercial.com

TOM KNECHT
Associate Broker

P. 503.542.2907
E. tom@capacitycommercial.com

STEPHEN OSSEY
Associate Broker

P. 503.542.4027
E. stephen@capacitycommercial.com

— Proud member of: —



The information contained herein is believed to be accurate but is not warranted as to its accuracy and may change or be updated without notice. Seller or Landlord makes no representation as to the environmental condition of the property and recommends purchaser's or tenant's independent investigation.