



LONDON WALL  
BUILDINGS



# The Building



Connecting history  
and innovation





**Now offering a range of contemporary units and an entrance experience to be proud of.**



# We've got the details covered, now make it yours.

The majority of the office suites benefit from raised floors, underfloor trunking or perimeter trunking, comfort cooling and good natural light.

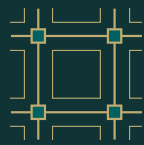
As a part of the refurbishment works a number of the office suites also benefit from exposed ceilings, new wooden flooring, pre-installed kitchen area and a roof terrace on the 6th floor.



**Newly Remodelled Reception**



**Comfort Cooling Air Conditioning**



**Exposed Ceilings**  
for units B3 G & 6th



**New Wooden Flooring**  
for units B1 4th, B3 G & 6th and B4 2nd



**Terrace Space**  
On 6th floor



**Other**  
24-Hour Security  
Lift Access  
Male/Female WCs  
Showers  
Bike Storage







1Rebel Gym



Spitalfields Market



Sushisamba



Swingers



Liverpool Street

# The Neighbourhood



Ottolenghi



Broadgate Circus



Finsbury Circus



South Place



# Workplaces available moments from Liverpool Street, Moorgate and Bank Stations

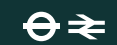


ON FOOT



Liverpool Street

2 mins



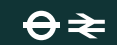
Moorgate

2 mins



Bank

6 mins



Old Street

8 mins



TRANSPORT FOR LONDON



King's Cross / St Pancras Int'l

10 mins



Oxford Circus

12 mins



Canary Wharf

18 mins



London City Airport

28 mins



CROSSRAIL



Canary Wharf

6 mins



Paddington

10 mins



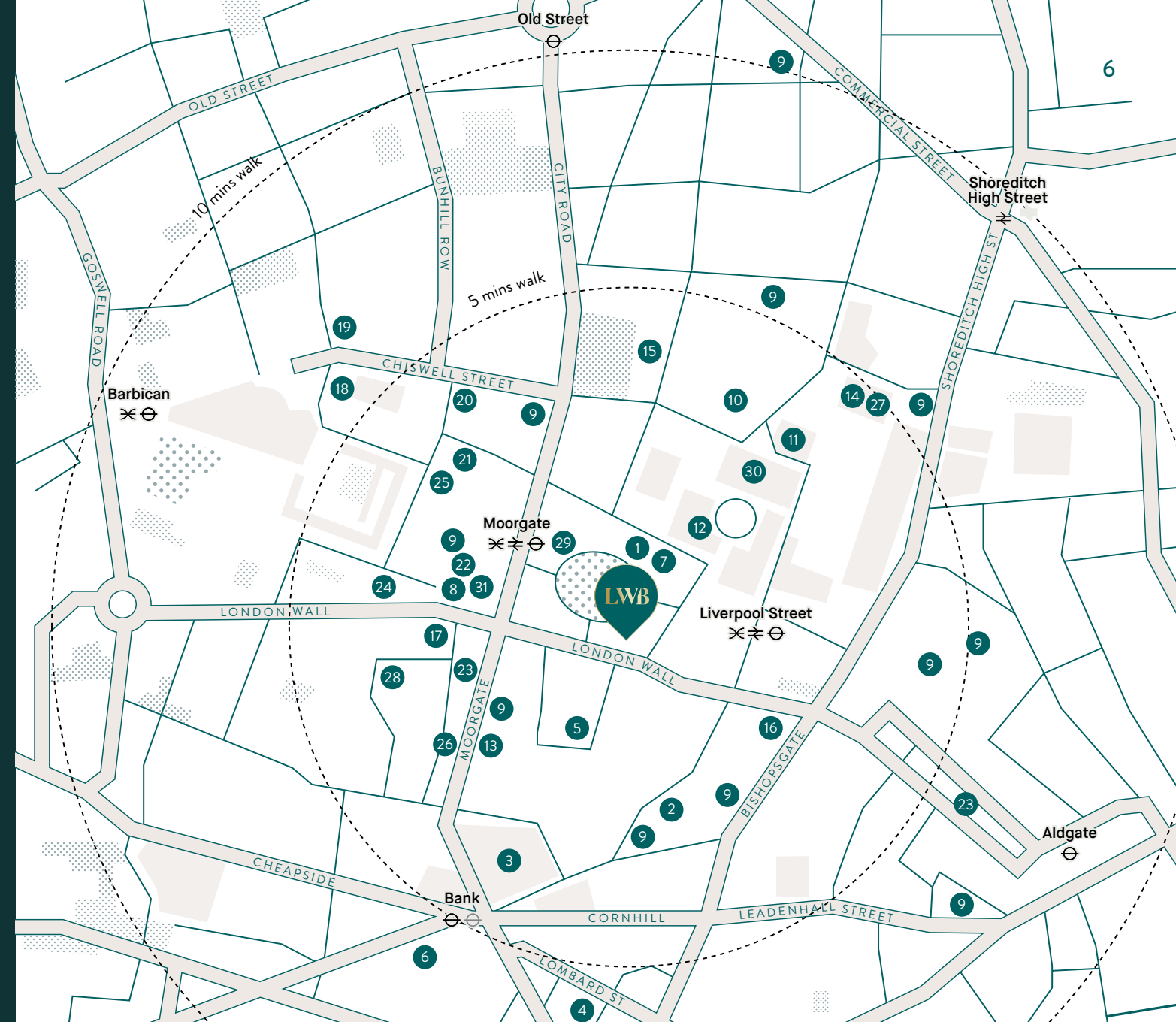
Heathrow

33 mins



Reading

60 mins



## Occupier List

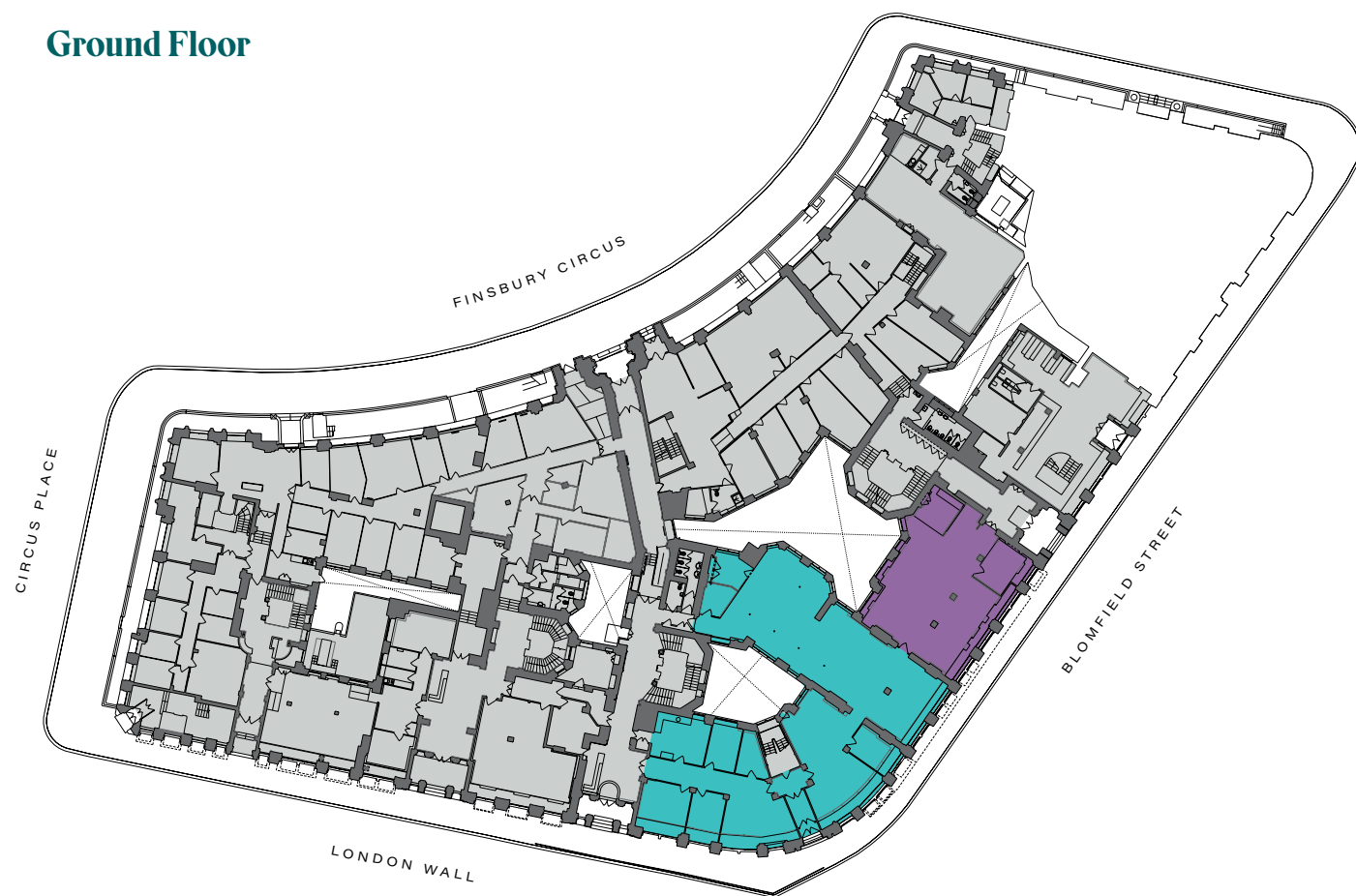
- |                                 |                             |                          |                             |
|---------------------------------|-----------------------------|--------------------------|-----------------------------|
| 1. Alvarez & Marsal             | 8. Citadel                  | 16. Latham & Watkins LLP | 25. Simmons & Simmons       |
| 2. AXA                          | 9. We Work                  | 17. Legal & General      | 26. Smith & Williamson      |
| 3. Bank of England              | 10. Close Brothers          | 18. Linklaters           | 27. Société Générale        |
| 4. Bank of Tokyo-Mitsubishi UFJ | 11. Deutsche Bank           | 19. Lloyds Banking Group | 28. Standard Chartered Bank |
| 5. BlackRock                    | 12. ICAP                    | 20. Macquarie            | 29. Stephenson Harwood      |
| 6. Bloomberg                    | 13. ING                     | 21. Mimecast             | 30. UBS                     |
| 7. Brown Brothers Harriman      | 14. Herbert Smith Freehills | 22. Pictet               | 31. UniCredit               |
|                                 | 15. Grant Thornton          | 23. Skanska              |                             |
|                                 |                             | 24. Schroders            |                             |



# The Accommodation

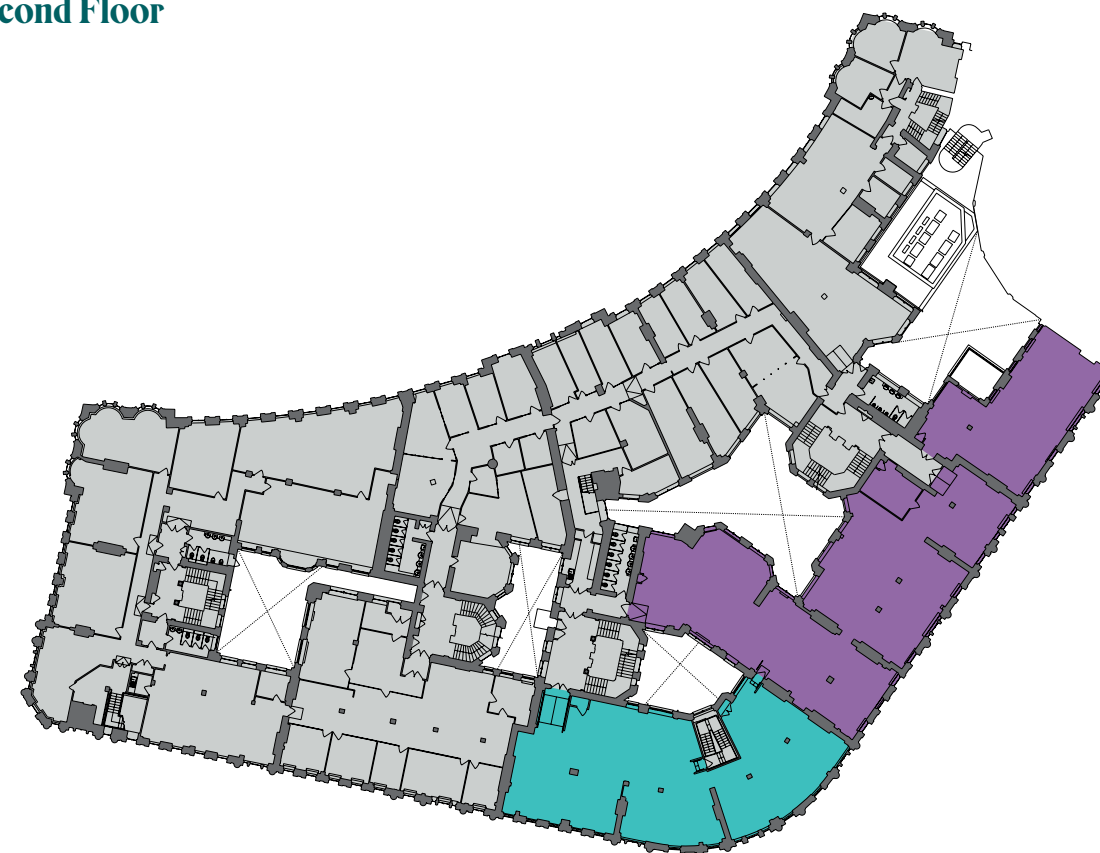
## Office units to let ranging from 612 sq ft to 9,208 sq ft

### Ground Floor



Building	Sq Ft
● Building 3	4,419
● Building 4	1,642
● Combined	6,061
<b>Total</b>	<b>6,061</b>

### Second Floor



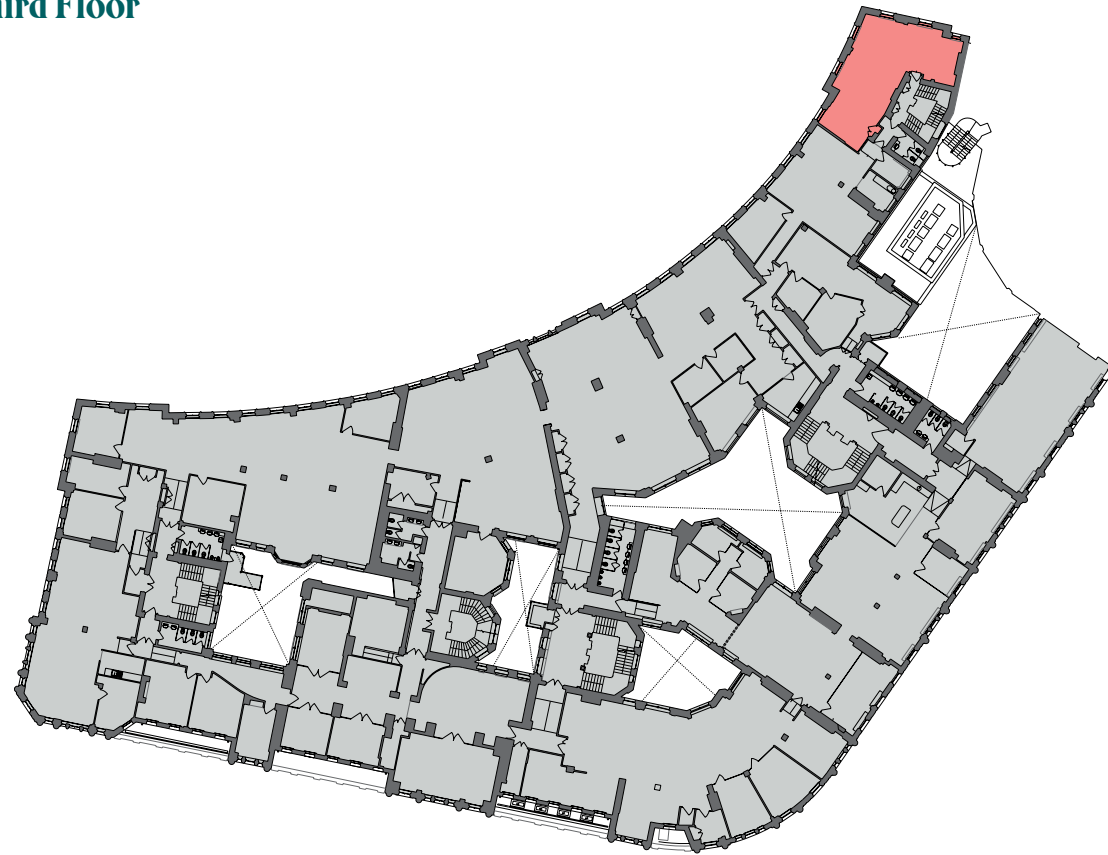
Building	Sq Ft
● Building 3	3,357
● Building 4	5,851
● Combined	9,208
<b>Total</b>	<b>9,208</b>



Plans are not to scale. For indicative purposes only.

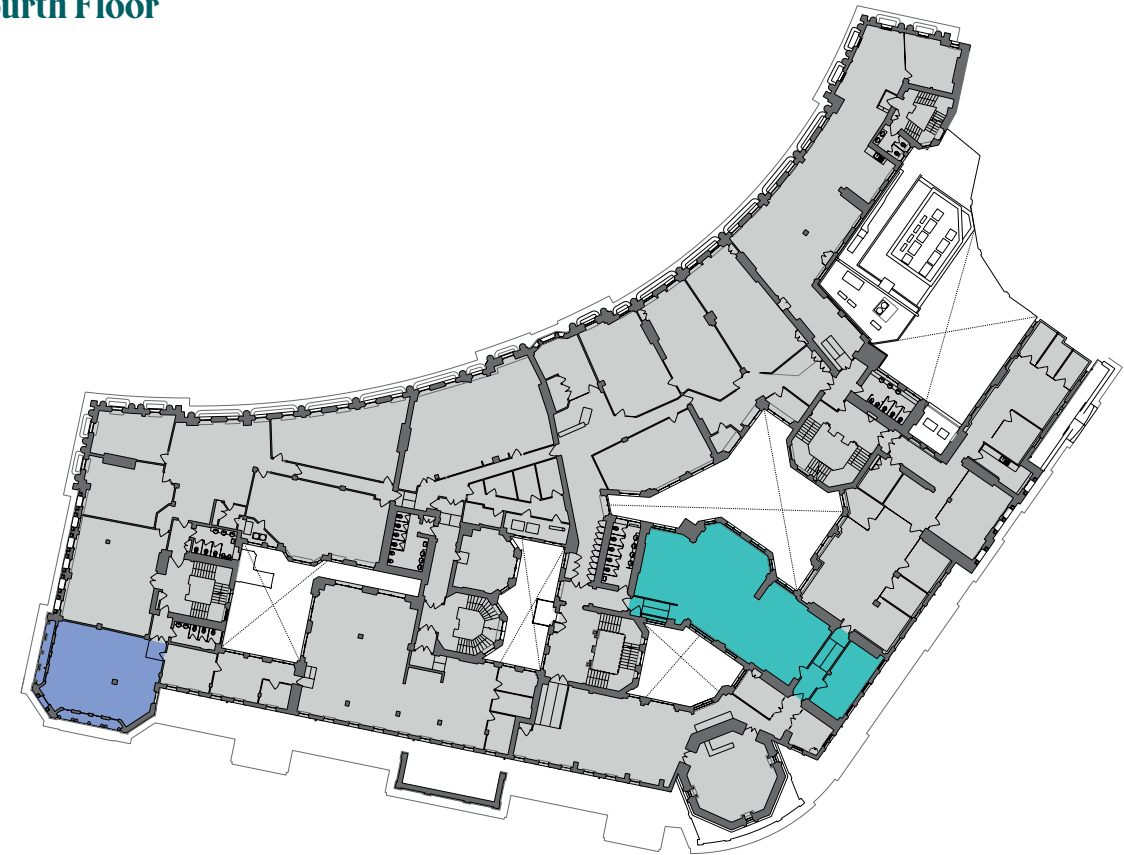


### Third Floor



Building	Sq Ft
● Building 5	881
<b>Total</b>	<b>881</b>

### Fourth Floor



Building	Sq Ft
● Building 1	889
● Building 3	2,000
<b>Total</b>	<b>2,889</b>



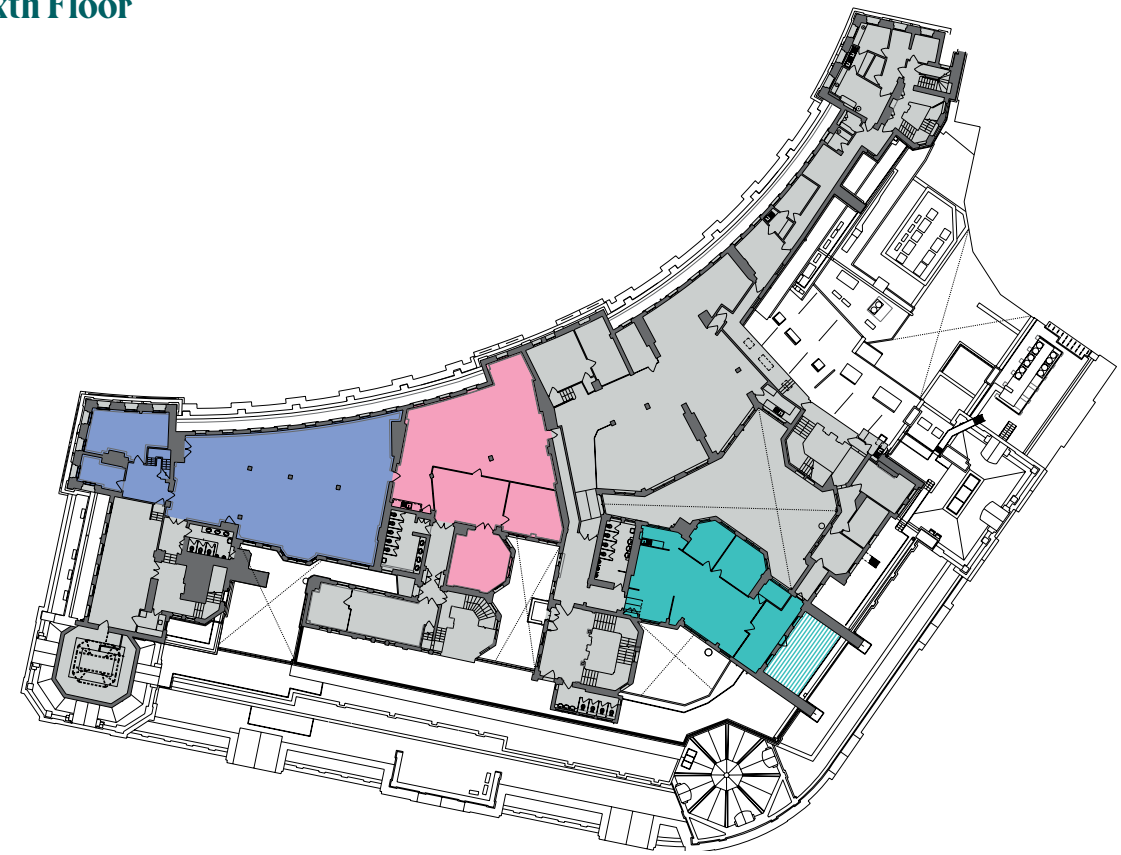


**Fifth Floor**



Building	Sq Ft
● Building 1	4,889
● Building 3	968
● Building 4	645
● Building 5	612
<b>Total</b>	<b>7,114</b>

**Sixth Floor**



Building	Sq Ft
● Building 1	3,833
● Building 2	2,364
● Combined	6,197
● Building 3	1,500
▨ Terrace	
<b>Total</b>	<b>7,697</b>



Plans are not to scale. For indicative purposes only.



# The opportunity for your business to connect the dots

All appointments to view must be arranged via agents:

**Colliers**  
INTERNATIONAL

**Alfie John**

Alfie.john@colliers.com  
07802 338 297

**James Walker**

James.walker@colliers.com  
07713 256 677

**Chris Commins**

Chris.commins@colliers.com  
07545 902 047

[collierslondon.com](http://collierslondon.com)

**THE WORKPLACE CO.**

**Nick Simmonds**

ns@theworkplacecompany.co.uk  
07900 247 577

**Robin Thomas**

rt@theworkplacecompany.co.uk  
07816 061 642

**Cécile Drugeon**

cd@theworkplacecompany.co.uk  
07415 961 043

[theworkplacecompany.co.uk](http://theworkplacecompany.co.uk)

## LONDON WALL BUILDINGS

A development by



[londonwallbuildings.com](http://londonwallbuildings.com)

Colliers International and The Workplace Company gives notice that these particulars are set out as a general outline only for the guidance of intending Purchasers or Lessees and do not constitute any part of an offer or contract. Details are given without any responsibility and any intending Purchasers, Lessees or Third Party should not rely on them as statements or representations of fact, but must satisfy themselves by inspection or otherwise as to the correctness of each of them. No person employed or engaged by Colliers International and The Workplace Company has any authority to make any representation or warranty whatsoever in relation to this property. November 2019. Designed by Studio 185. [studio185.london](http://studio185.london) | 076