



© 2022 JNM, II - ARCH

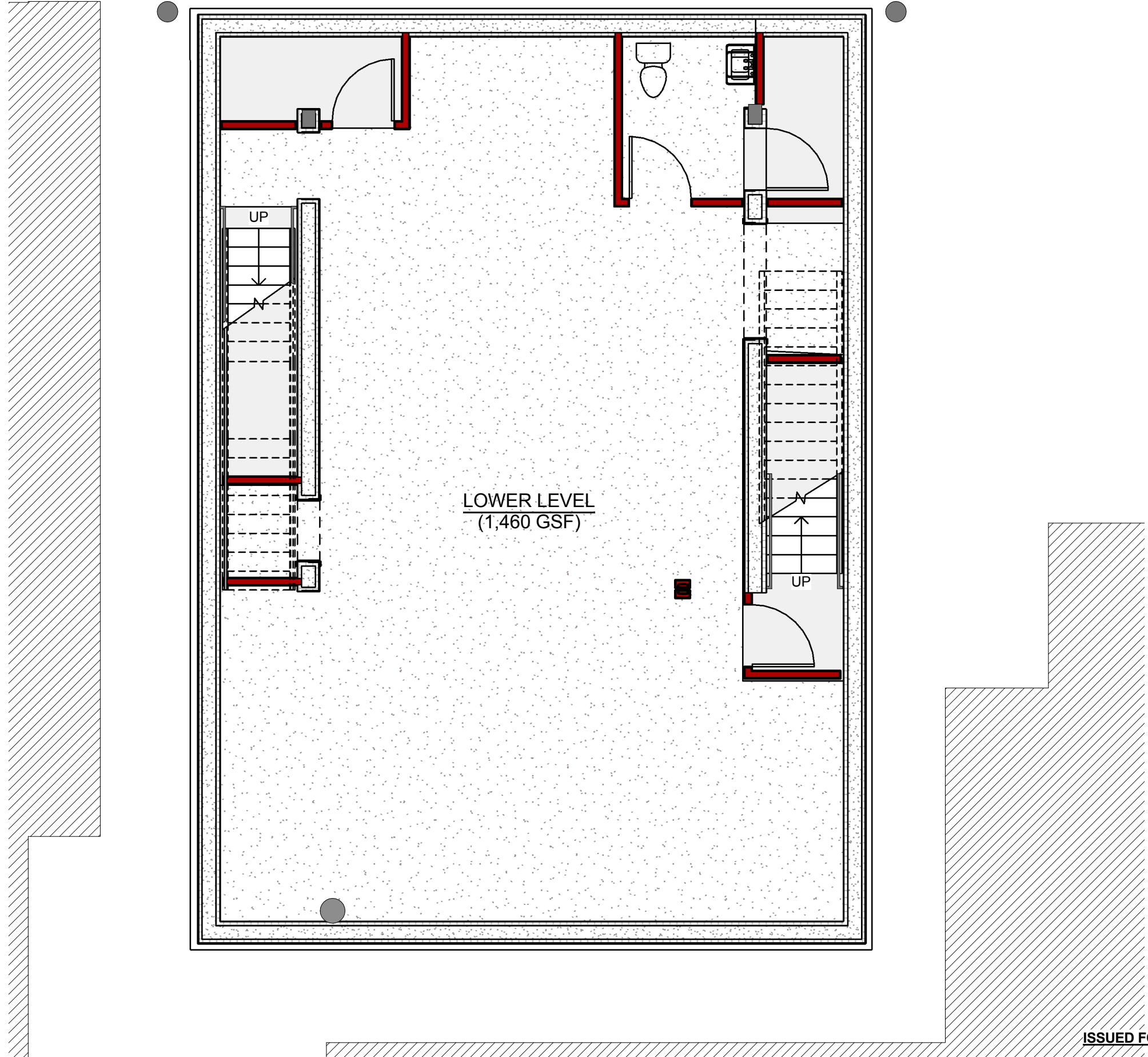
Joseph N. McPhee, II - Architect  
20 Westwood Road, Lincoln, RI 02865  
401.632.7255 jmcphgearchitect@cox.net  
† RASFORM

New 4 St Mixed-Use Infill Building  
PHASE I  
BASE BUILDING w/ 3rd & 4th APARTMENTS  
235 MEETING STREET, PROVIDENCE, RI

Lower Level Floor Plan  
Project No.: Project Number  
Dwg Date/Rel.Date: 03/28/24  
Drawn by: JNM,II Checked by: JNM,II

**A-1.0**

REL 12  
ISSUED FOR COMM LEASE AREAS  
07/27/24  
Scale 3/16" = 1'-0"



LOWER LEVEL  
(1,460 GSF)