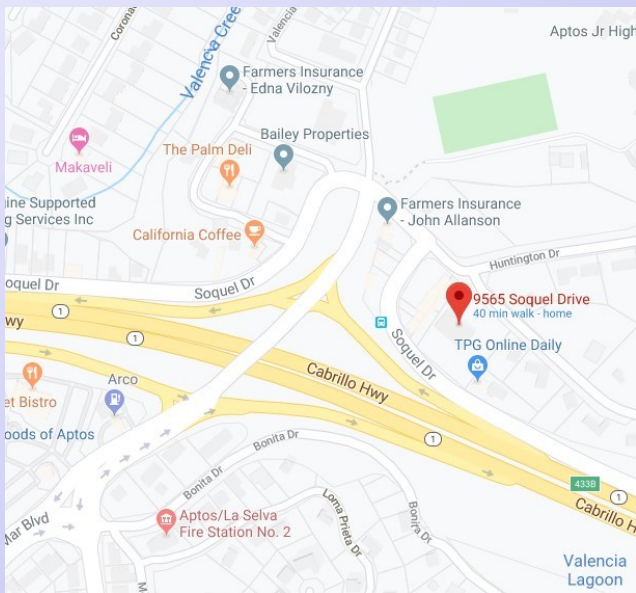


AVAILABLE FOR LEASE

9565 SOQUEL DRIVE, APTOS

OFFICE SPACE FOR LEASE



APTOS RIDGE

Suite 101 | +/- 2,301 SF

- EXPANSIVE GLASS AND NATURAL LIGHT
- OPERABLE WINDOWS
- CONVENIENT ACCESS TO HIGHWAY 1
- ON-SITE PARKING
- BREAK AREA AND COMMON USE SHOWER

\$1.65 SF/MO | NNN \$0.55



KOLTON PICO

DRE #02006875

kpico@sheldonwiseman.com

JIM WISEMAN

DRE #01104278

jwiseman@sheldonwiseman.com



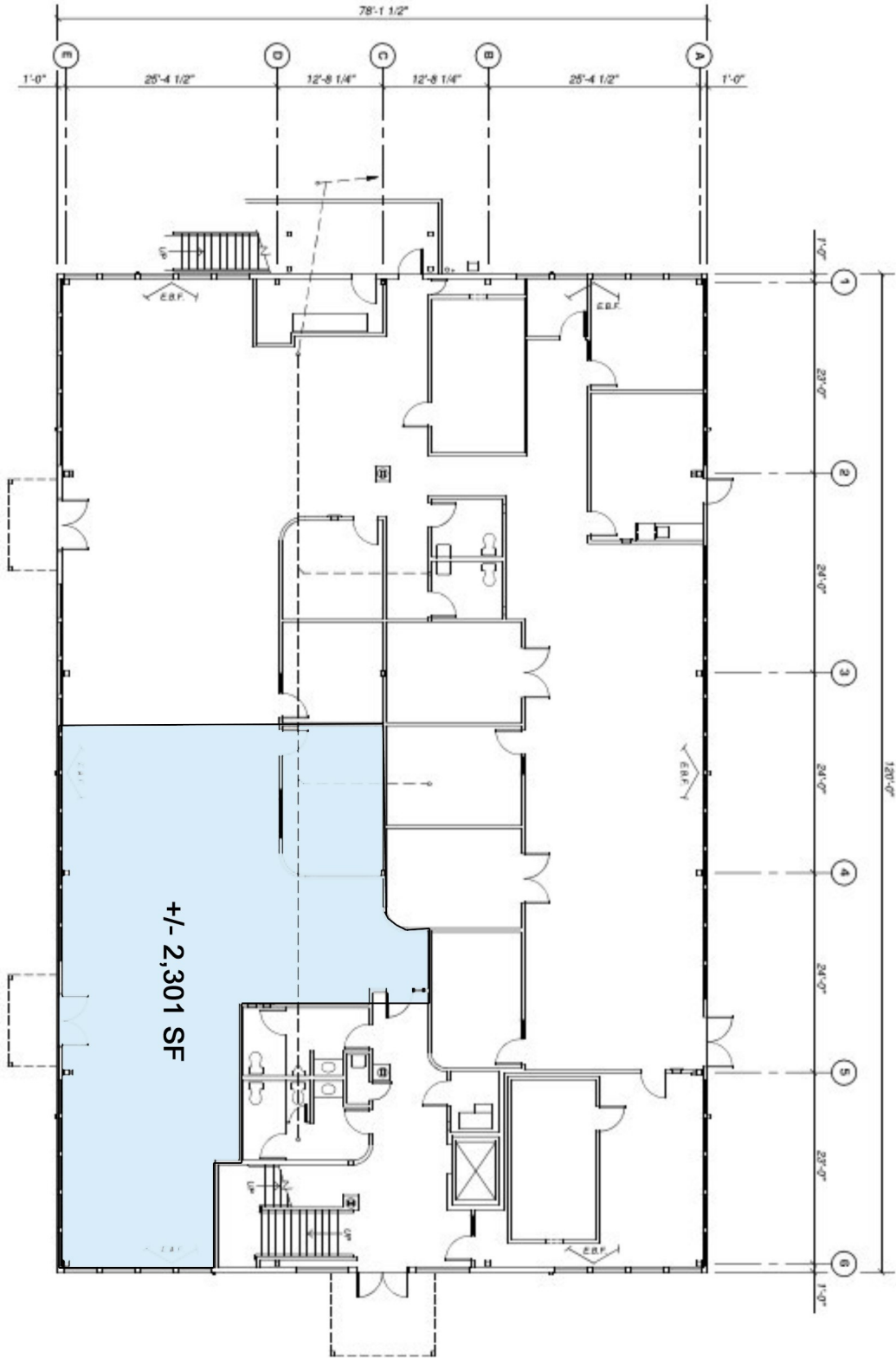
While the information contained herein is deemed reliable, we cannot guarantee its accuracy. All information should be verified.

1200 Pacific Avenue, Suite 390 ■ Santa Cruz, CA 95060

Tel: 831 ■ 454 ■ 9400 ■ Fax: 831 ■ 459 ■ 7988 ■ www.sheldonwiseman.com

INTEGRITY ■ SERVICE ■ RESULTS

Floor Plan



While the information contained herein is deemed reliable, we cannot guarantee its accuracy. All information should be verified.

