

2320 EAST BIDWELL STREET
BROADSTONE VILLAGE • FOLSOM, CA

±2,760 SF AVAILABLE





2320 EAST BIDWELL ST FOLSOM, CA • FOR LEASE

PROPERTY FEATURES

- ±2,760 RSF
- Professional tenant mix
- 4/1,000 parking ratio
- Centrally located
- Easy access on East Bidwell Street
- \$1.85 modified gross

FOR MORE INFORMATION, PLEASE CONTACT:

Alexis Garrett

+1 916 491 4316

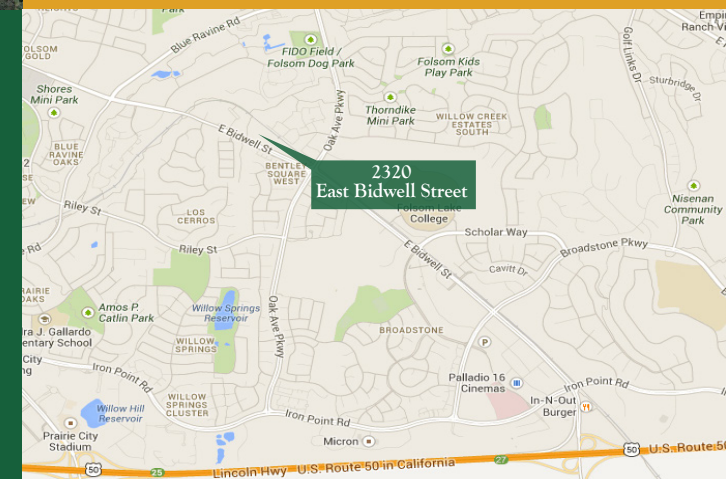
alexis.garrett@am.jll.com

CA Lic # 01836361



500 CAPITOL MALL SUITE 2300 • SACRAMENTO, CA 95814 • WWW.US.JLL.COM/SACRAMENTO

Disclaimer: Although information has been obtained from sources deemed reliable, Owner, Jones Lang LaSalle, and/or their representatives, brokers or agents make no guarantees as to the accuracy of the information contained herein, and offer the Property without express or implied warranties of any kind. The Property may be withdrawn without notice. ©2013, Jones Lang LaSalle. All rights reserved.

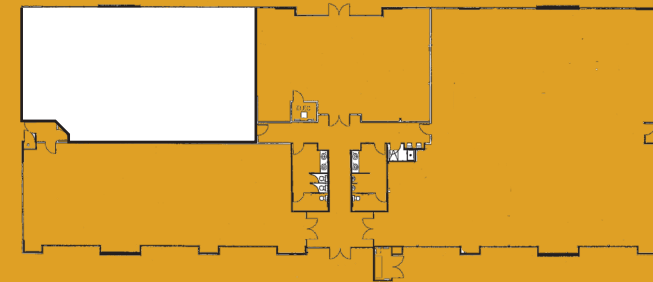
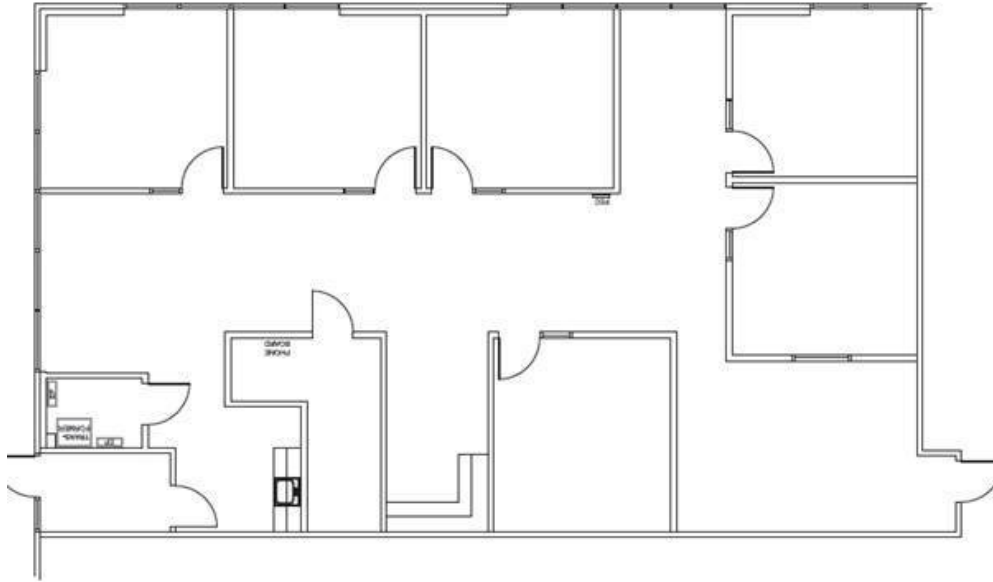


2320 EAST BIDWELL ST FOLSOM, CA • FOR LEASE

SUITE 125

±2,760 RSF

- TI allowance available
- Six private offices, break area with a sink, rear exit door
- Corner suite with floor to ceiling windows and excellent natural light



FOR MORE INFORMATION, PLEASE CONTACT:

Alexis Garrett

+1 916 491 4316

alexis.garrett@am.jll.com

CA Lic # 01836361



500 CAPITOL MALL SUITE 2300 • SACRAMENTO, CA 95814 • WWW.US.JLL.COM/SACRAMENTO