

LEASE

OFFICE



6440 FULTON ST. E



6440 FULTON ST. E, ADA, MI 49301

PROPERTY OVERVIEW

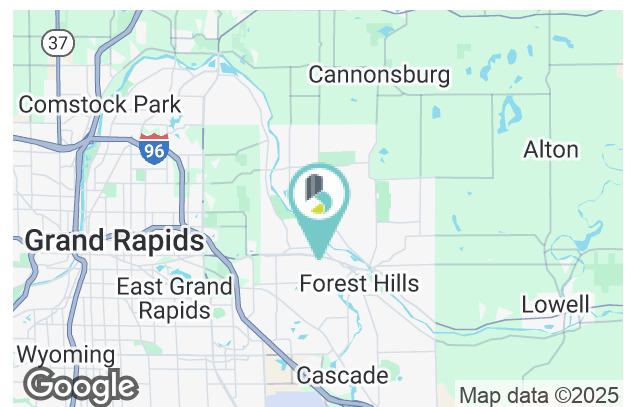
Rare opportunity to have Fulton Street frontage just outside Ada village. Suite has been recently updated and includes multiple offices of varying sizes. Included in total square footage is 1,008 square feet of flex/ storage space adjacent to office suite.

PROPERTY HIGHLIGHTS

- Affordable Lease Rate
- 2,600 sf of Office
- 1,008 sf of Flex Space
- Fulton Street Frontage
- Fulton Street Signage
- Onsite Parking Included
- Ada, Michigan address

LEASE RATE \$15.00 SF/YR (MG)

| | |
|----------------|-----------|
| Available SF: | 3,608 SF |
| Building Size: | 18,400 SF |



BRADLEY COMPANY TERESA DATEMA
220 Lyon St. NW, Suite 400 Advisor, Healthcare Facilities Specialist
Grand Rapids, MI 49503 616.309.7395
616.254.0005 tdatema@bradleyco.com



BRADLEYCO.COM



6440 FULTON ST. E, ADA, MI 49301

LEASE

OFFICE



TERESA DATEMA
Advisor, Healthcare Facilities Specialist
616.309.7395
tdatema@bradleyco.com



6440 FULTON ST. E, ADA, MI 49301

LEASE

OFFICE



TERESA DATEMA
Advisor, Healthcare Facilities Specialist
616.309.7395
tdatema@bradleyco.com



6440 FULTON ST. E, ADA, MI 49301

LEASE

OFFICE



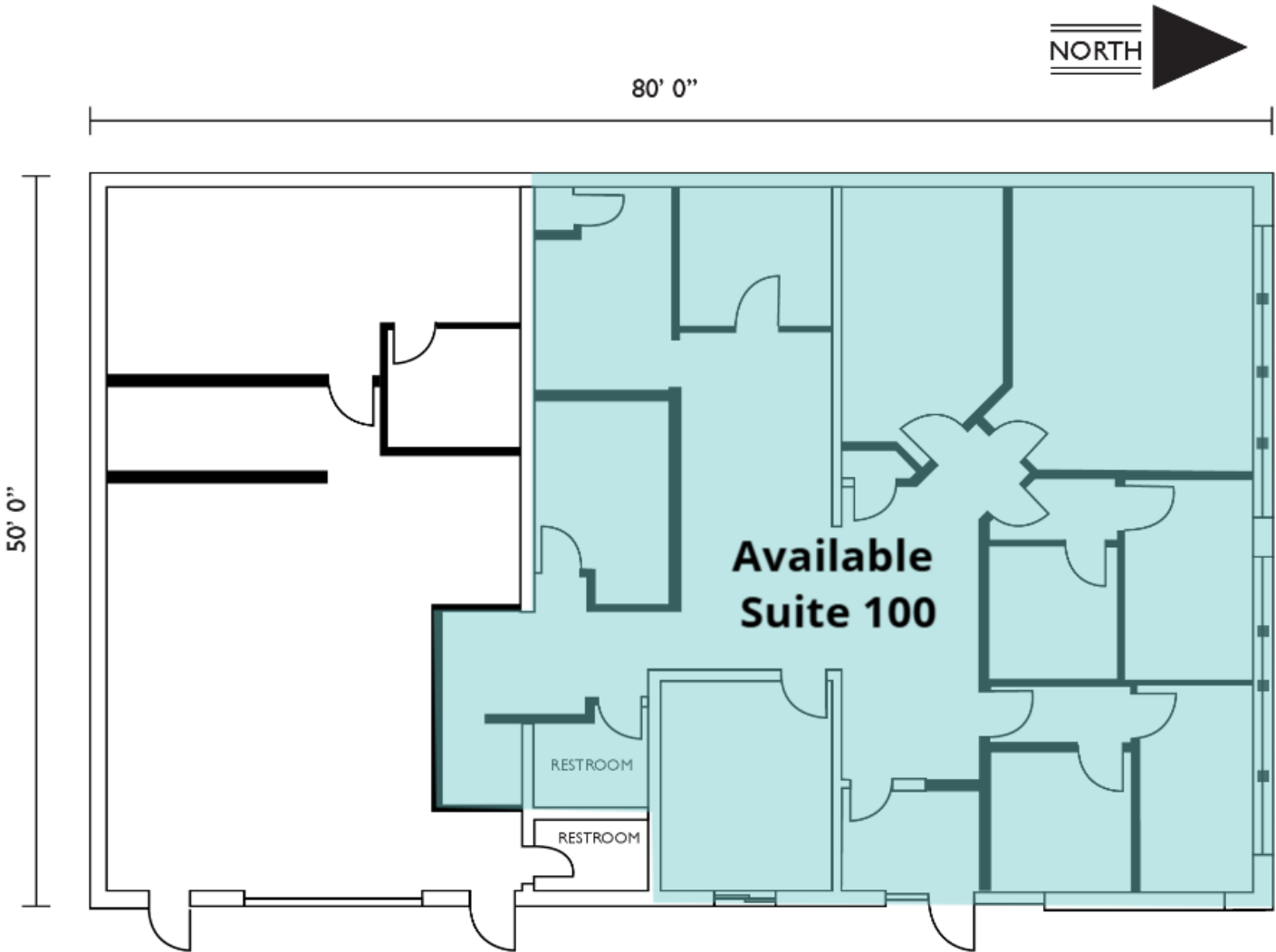
TERESA DATEMA
Advisor, Healthcare Facilities Specialist
616.309.7395
tdatema@bradleyco.com



6440 FULTON ST. E, ADA, MI 49301

LEASE

OFFICE



TERESA DATEMA
Advisor, Healthcare Facilities Specialist
616.309.7395
tdatema@bradleyco.com



MEET YOUR NEIGHBORS

6440 FULTON ST. E, ADA, MI 49301

LEASE

OFFICE



TERESA DATEMA
 Advisor, Healthcare Facilities Specialist
 616.309.7395
 tdatema@bradleyco.com

©2025 Bradley Company, LLC and affiliates. Use of any third party name or mark is for informational purposes only and does not indicate sponsorship or endorsement by such party. Not all information has been independently verified, and the presenting broker makes no guarantee about its accuracy. Any projections, opinions, or estimates are for example only. Before completing a real estate transaction, you and your advisors should conduct an independent investigation of the property to determine its suitability for your needs.