



PREMIER
COMMERCIAL
PROPERTIES

FOR LEASE



Office For Sublease

7270 Forestview Lane, Suite 175
Maple Grove, MN 55369

AVAILABLE SPACE

- 2,066 square feet office space available on a sublease
- Terrific layout with reception and 6 offices
- Great location in Maple Grove with easy access to hwy 94 and hwy 494
- First level unit with common area bathrooms
- Setup well for therapist, medical, or other office like uses
- Some offices have sinks
- Ample parking
- Monument signage availability



\$19.28/sf NNN
Lease runs through 9/30/2028

FOR MORE INFORMATION, CONTACT

Mike Fisher

763-486-8247

mikefisher@premiercommercialproperties.com



PREMIER
COMMERCIAL
PROPERTIES

FOR LEASE

CONTACT: Mike Fisher

MOBILE: 763-486-8247

EMAIL: mikefisher@premiercommercialproperties.com





PREMIER
COMMERCIAL
PROPERTIES

FOR LEASE

CONTACT: Mike Fisher

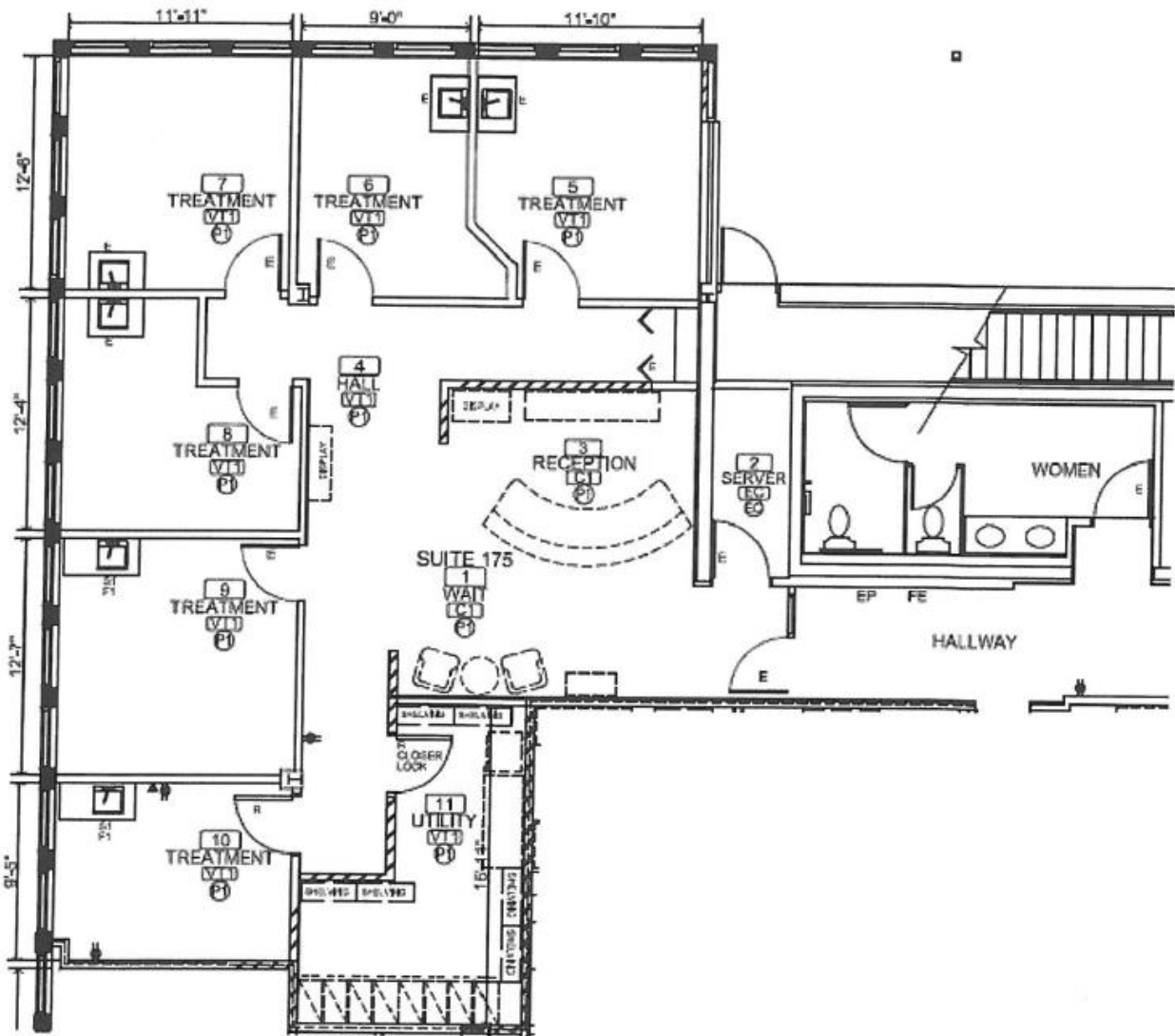
MOBILE: 763-486-8247

EMAIL: mikefisher@premiercommercialproperties.com





Floor Plan





PREMIER
COMMERCIAL
PROPERTIES

FOR LEASE

CONTACT: Mike Fisher

MOBILE: 763-486-8247

EMAIL: mikefisher@premiercommercialproperties.com

Scan QR Code for video tour





PREMIER
COMMERCIAL
PROPERTIES

FOR LEASE

CONTACT: Mike Fisher

MOBILE: 763-486-8247

EMAIL: mikefisher@premiercommercialproperties.com

