

NOW LEASING

# RIVERWALK - RIVER DISTRICT

ROCK HILL, SOUTH CAROLINA

## Imagine working in a mixed-use outdoor community...

## Welcome to Riverwalk!



### Regional Convenience

20 minutes to Ballantyne, 25 minutes to the Charlotte Douglas International Airport, 30 minutes to Uptown Charlotte

### Regional Access

Development borders Cherry Road and Edens Terrace, less than .25 miles from 177's exit 82

### Thriving Community

1007-acre mixed-use development serving general office, medical office, restaurants and shops for employees, families & residents across the Carolinas

### Distinctive Outdoor Amenities

In addition to the 2.5 miles of paved greenway and new amphitheater along the Catawba River, Riverwalk has South Carolina's only Olympic caliber velodrome

### New Business Hub

Home to Fortune 500 and Fortune 1000 corporations, multiple medical practices and local businesses

### Abundant Housing

1600 homes, apartments, and townhomes

## DEMOGRAPHICS



### POPULATION

1 Mile: 3,262  
3 Miles: 37,647  
5 Miles: 105,108



### AVG. HH INCOME

1 Mile: \$66,033  
3 Miles: \$73,507  
5 Miles: \$81,048



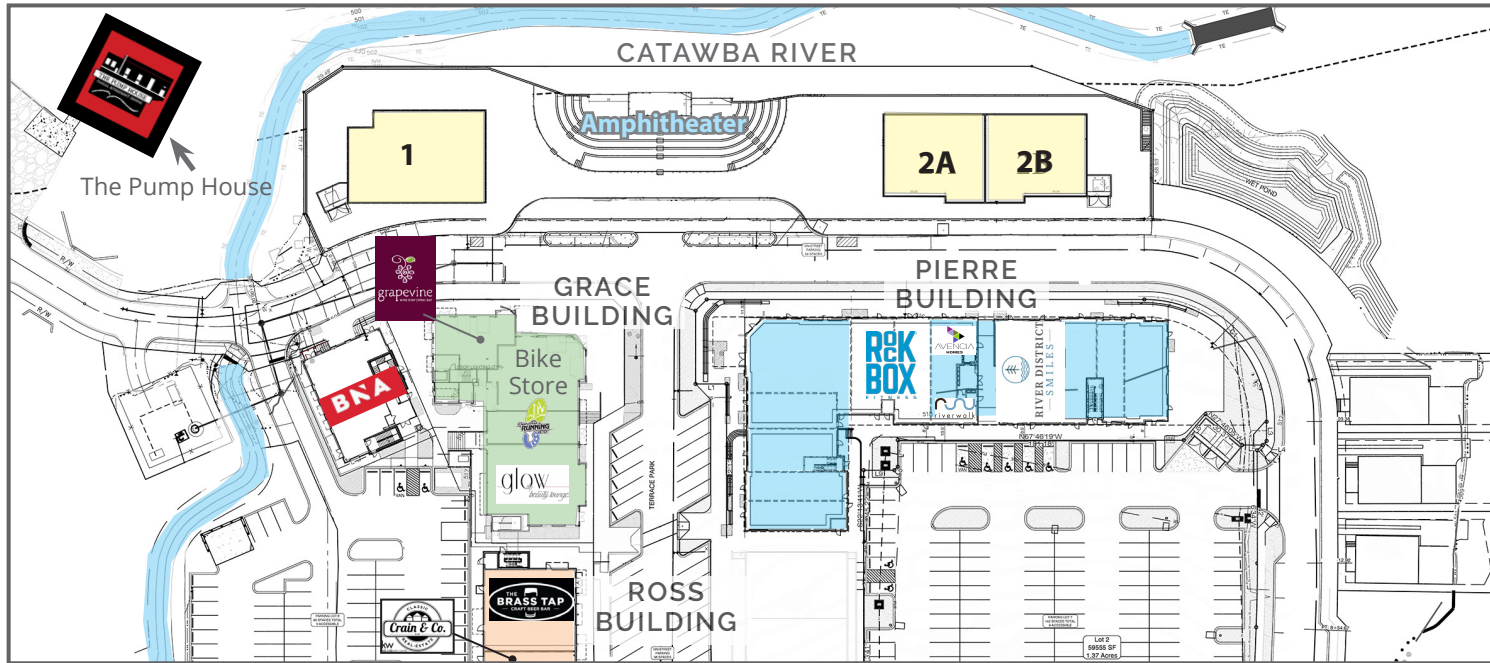
### DAYTIME POP.

1 Mile: 2,294  
3 Miles: 17,728  
5 Miles: 50,548

For Leasing information contact:

Boyd Alexander | 713-870-1000 | [balexander@grhdevelopment.com](mailto:balexander@grhdevelopment.com)





A DYNAMIC,  
RIVERFRONT  
COMMUNITY  
WITH A  
DISTINCTIVE,  
OUTDOOR  
LIFESTYLE.



AVAILABLE PAD SPACE

BUILDING	SIZE	AVAILABLE
1	9,638 SF	1,500-9,638 SF
2A	6,994 SF	1,500-6,994 SF
2B	6,994 SF	1,500-6,994 SF



"The information contained herein was obtained from sources believed reliable, however, no guarantees, warranties, or representations have been made as to the completeness or accuracy thereof. No liability assumed for error or omissions."

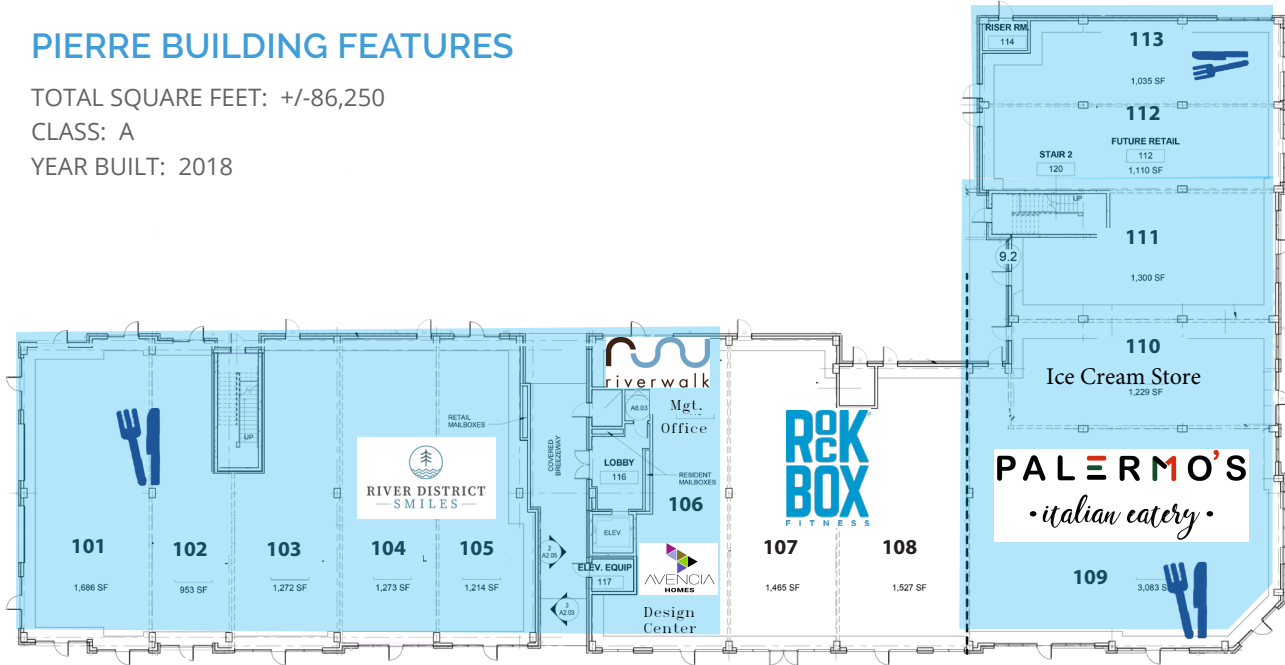


PIERRE BUILDING FEATURES

TOTAL SQUARE FEET: +/-86,250

CLASS: A

YEAR BUILT: 2018



AVAILABLE SPACE				
🍴	SUITE 101	1,762 SF	SUITE 108	LEASED
🍴	SUITE 102	1,007 SF	🍴 SUITE 109	LEASED
	SUITE 103	1,324 SF	SUITE 110	1,272 SF
	SUITE 104	LEASED	SUITE 111	1,442 SF
	SUITE 105	LEASED	SUITE 112	1,160 SF
	SUITE 106	LEASED	SUITE 113	1,089 SF
	SUITE 107	LEASED		

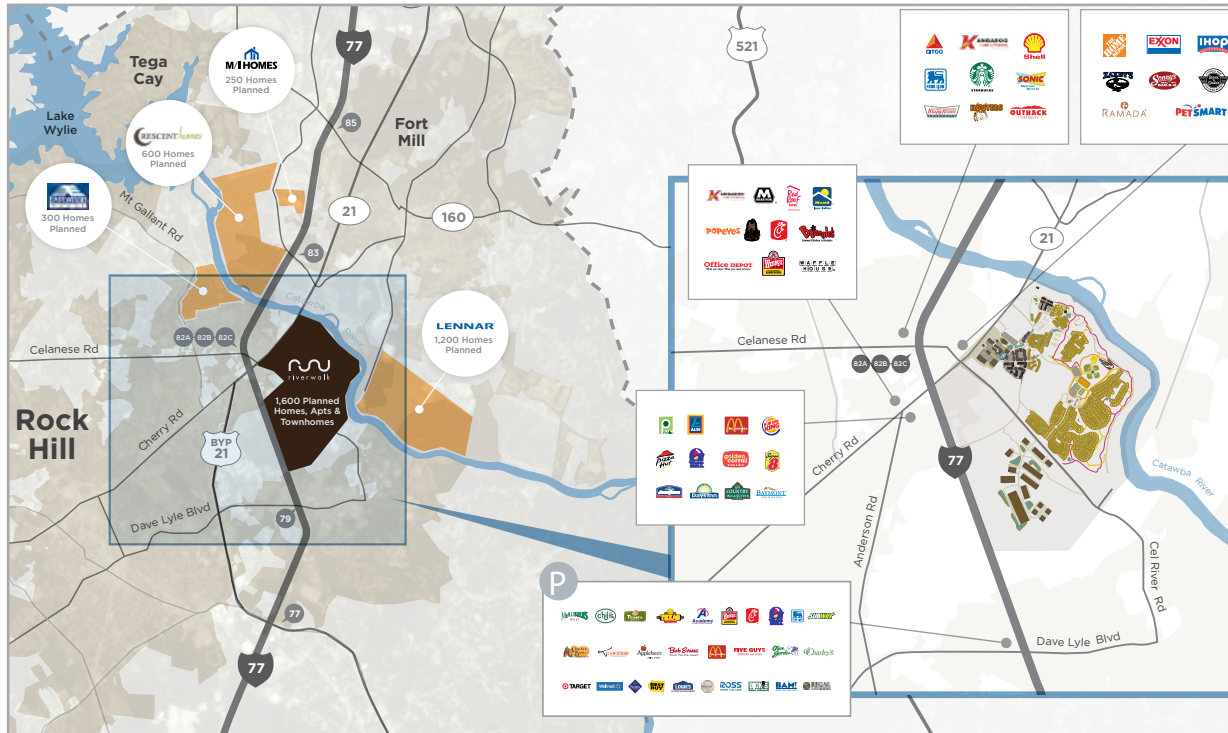


+/-2,767 - 4,093  
Restaurant Space  
with ventilation  
for restaurant use,  
patio seating, river  
views and oversized  
garage doors

"The information contained herein was obtained from sources believed reliable, however, no guarantees, warranties, or representations have been made as to the completeness or accuracy thereof. No liability assumed for error or omissions."



## RESTAURANTS AND LOCAL ATTRACTIONS



## RESTAURANTS + LOCAL ATTRACTIONS NEARBY

### FOOD + DRINKS

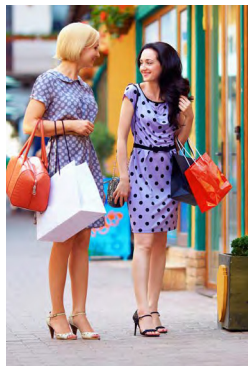
- Bojangles
- Brass Taps
- Del Taco
- Freddy's Steakburgers
- Grapevine
- IHOP
- Olive Garden
- Outback Steakhouse
- Panera Bread
- Pump House
- Ruby Tuesday's
- Showmars
- Steak & Shake
- Texas Roadhouse
- Wendy's
- Zaxby's
- \*coming soon

### LODGING + ATTRACTIONS

- Anne Springs Close Greenway
- Blues & Jazz Festival
- Carowinds
- Cherry Park
- Courtyard Marriott
- Culture & Heritage Museums
- Fountain Park
- Glencairn Garden
- Hampton Inn
- Hilton Garden Inn
- Hyatt Place
- Wingate by Wyndham
- Winthrop University
- 2017 BMX World Championships

### SHOPPING + NIGHTLIFE

- Academy Sports & Outdoors
- Aeropostale
- American Eagle Outfitters
- Azure Boutique
- Belk
- Best Buy
- Carmike Cinemas 7
- Claire's
- Dick's Sporting Goods
- Galleria Mall
- Glow
- Home Depot
- Hot Topic
- Kohl's
- Lowe's
- Petsmart
- Plato's Closet
- Regal Manchester Stadium
- Rock Box
- Rock Hill Tavern
- Rue21
- Running Store
- Sam's Club
- Target



"The information contained herein was obtained from sources believed reliable, however, no guarantees, warranties, or representations have been made as to the completeness or accuracy thereof. No liability assumed for error or omissions."

