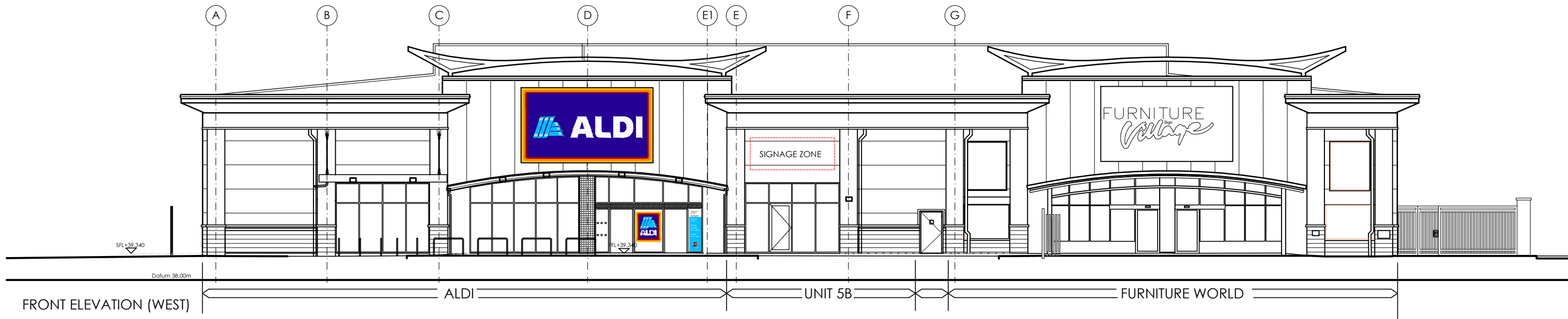


THE HARRIS GROUP LTD DOES NOT ACCEPT LIABILITY FOR ANY
DEVIATION TO OUR DRAWINGS OR SPECIFICATION.

THIS IS BASED ON THIRD PARTY INFORMATION AND AS SUCH
THP ARE NOT LIABLE FOR ANY DISCREPANCIES



	dd-mm-yy	-----	---	---		
Rev	Date	Description	Rev By	Chk'd By		
Project Title		SUB-LET UNIT UNIT 5 SPRINGVALE RETAIL PARK ORPINGTON BR5 3SG				
Client		ALDI FOODSTORES LTD - SHEPPEY				
Status		PRELIMINARY				
Scale		1:100	Drawing Size	A3		
Date		OCT 2022	Drawn By	KJM	Checked	GH
Drawing Title		PROPOSED FRONT ELEVATION				
Job-Dwg No		2974 - 213		Rev	-	
<div><div><input type="checkbox"/> 2 St. Johns North, Wakefield, WF1 3QA t. 01924 291800</div><div><input type="checkbox"/> Carvers Warehouse, 77 Dale Street, Manchester, M1 2HG t. 0161 2388555</div><div><input type="checkbox"/> The Old Rectory, 79 High Street, Newport Pagnell, MK16 8AB t. 01908 211577</div><div><input checked="" type="checkbox"/> 101 London Road, Reading, RG1 5BY t. 0118 9507700</div></div> <div><div></div><div>THE HARRIS PARTNERSHIP</div></div>						

