



FOR LEASE THEATRE SQUARE RETAIL





Vibrant Retail Space in the Heart of Downtown Petaluma

JONES LANG LASALLE BROKERAGE, INC. REAL ESTATE LICENSE #: 01856260



PROPERTY HIGHLIGHTS

DESCRIPTION

-  Class "A" building with high quality finishes throughout
-  Annual average daily traffic count at C Street and Petaluma Blvd is $\pm 17,120$ vehicles per day
-  Abundant and convenient parking nearby
-  Prompt decision-making & uncomplicated negotiations by local, reputable owner



SUITE 104: $\pm 2,024$ SF

ADDRESS: 140 2nd Street, Petaluma

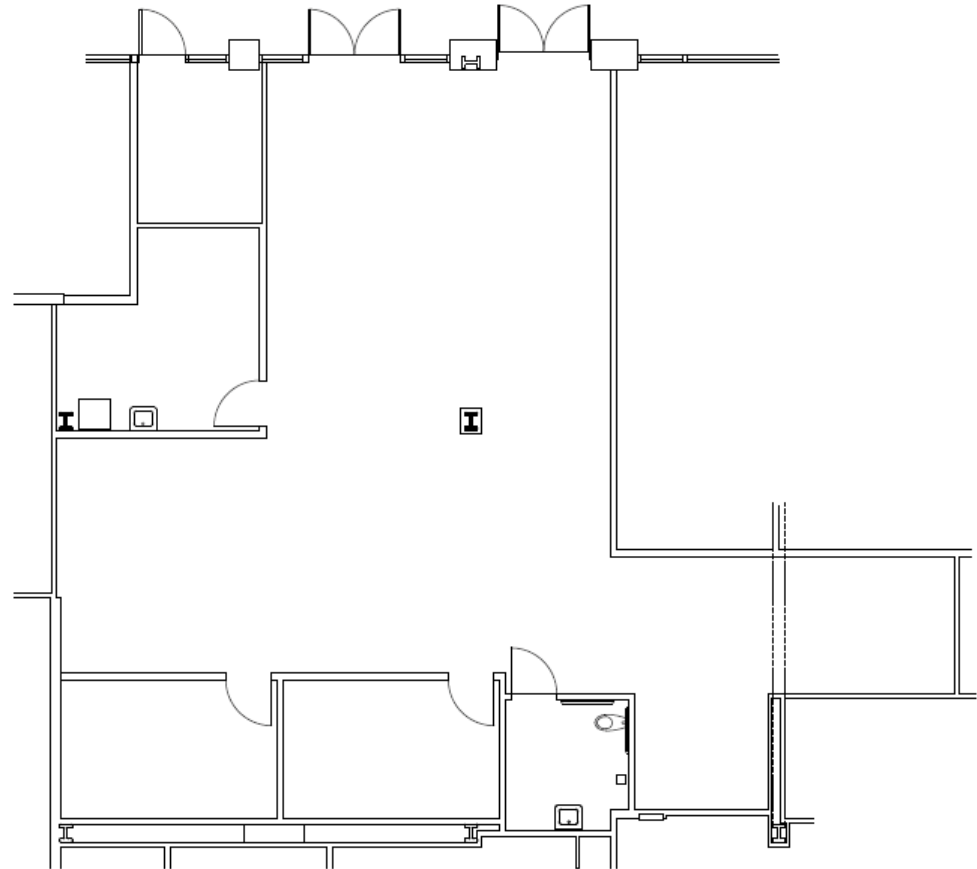
TYPE: Retail

OWNED & MANAGED BY: Basin Street Properties

SUITE 104

±2,024 SF

- ±2,024 SF retail space
- (3) private rooms
- (2) double-door entrances
- Available fully furnished
- In-suite restroom
- High identity location
- Excellent signage opportunity



LOCATION HIGHLIGHTS

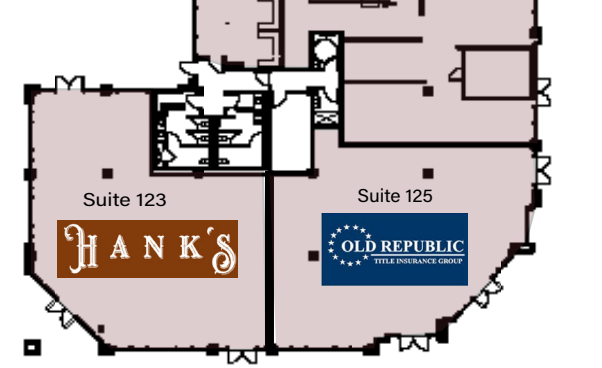
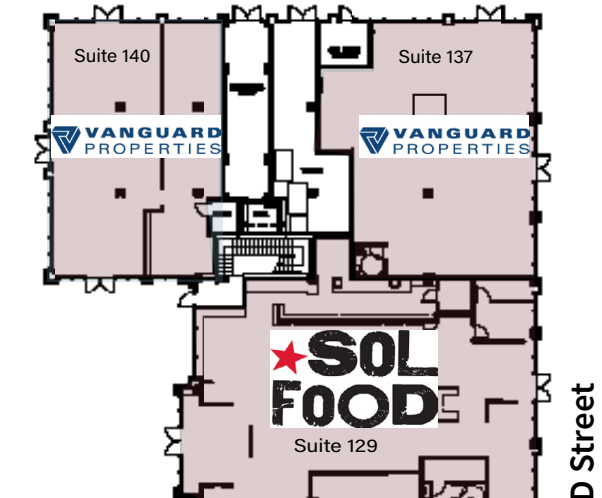
In the heart of charming Petaluma you will find the Theatre District. The region's premier open-air dining and retail destination venue, featuring local downtown shopping, savory eateries and entertainment.



www.theatre-district.com



2nd Street



Petaluma Boulevard S





FOR LEASE

THEATRE SQUARE | PETALUMA, CA

For more information,
please contact:

Tony Sarno

+1 707 217 7196
RE Lic# 01430933
tony.sarno@jll.com

Glen Dowling

+1 415 299 6868
RE Lic# 00890450
glen.dowling@jll.com



BASIN STREET
PROPERTIES

Although information has been obtained from sources deemed reliable, neither Owner nor JLL makes any guarantees, warranties or representations, express or implied, as to the completeness or accuracy as to the information contained herein. Any projections, opinions, assumptions or estimates used are for example only. There may be differences between projected and actual results, and those differences may be material. The Property may be withdrawn without notice. Neither Owner nor JLL accepts any liability for any loss or damage suffered by any party resulting from reliance on this information. If the recipient of this information has signed a confidentiality agreement regarding this matter, this information is subject to the terms of that agreement. ©2026 Jones Lang LaSalle IP, Inc. All rights reserved.