



# THE CAMBER

AT WESTFIELDS

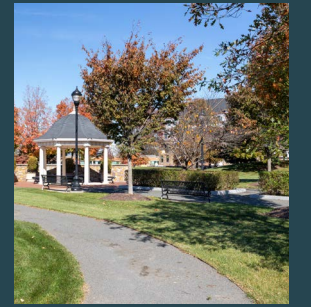


14501 GEORGE CARTER WAY | CHANTILLY, VA





THE CAMBER  
AT WESTFIELDS



# WELCOME TO

## THE CAMBER

AT WESTFIELDS

The Camber is an iconic 272,566 square-foot structure conceptualized and constructed between 2008 and 2009 to meet the high standards of a purpose-built headquarters facility. The Camber was further renovated in 2023 with additional modernized amenities and office suites. The property provides tenants and visitors with an array of on-site amenities, an accompanying parking garage boasting a parking ratio exceeding 5 per 1,000, and a picturesque, park-inspired environment featuring a gazebo, pond, and water features. Recently renamed for its stunning architecture and distinctive arched windows, The Camber continues to stand out in the market as a testament to quality and style.



Scan or click to take a virtual tour at The Camber

WHERE  
**MODERN  
INNOVATION**  
MEETS TIMELESS  
LUXURY

Explore the refined charm and convenience of The Camber's recently updated lobby, featuring a tenant lounge and a fully equipped conference center for a heightened experience.

- Recently renovated lobby, conference center, and tenant lounge
- Fitness Center with shower and locker facilities
- Expansive landscaped grounds
- Various outdoor spaces
- Exemplary quality and design
- 9-foot finished ceiling heights
- Three separate elevator lobbies
- Parking ratio exceeding 5 per 1,000
- Structured parking
- Convenient sky bridge to parking facility



CONFERENCE CENTER



# CONTEMPORARY TENANT LOUNGE

Discover unmatched style in our new tenant lounge and conference center. Modern furnishings and flexible layouts tailor the environment to your needs. The state-of-the-art conference facilities and catering kitchen make it ideal for on-site events and happy hours. Redefine your workspace – where innovation meets comfort.



# UNMATCHED VISIBILITY

**75 Million**  
VIEWS PER YEAR  
FROM ROUTE 28



The property is strategically faced at the intersection of Route 28 and Willard Road, offering exceptional connectivity to key transportation hubs such as the Dulles International Airport, I-66, Route 267 (the Toll Road), I-495 (Capital Beltway), and the greater Northern

Virginia and Washington, D.C. areas. Ideally located for government contractors, the Camber is directly across from the 1.3 million square-foot National Reconnaissance Office, it is also a brief drive from the 1 million square-foot CIA counter-terrorism campus in Westfields.

**10 minutes**  
Toll Road

**10 minutes**  
Dulles Int'l Airport

**20 minutes**  
Tysons, VA

**30 minutes**  
Washington, D.C.

**30 minutes**  
Reagan Nat'l Airport



# CONFERENCE CENTER

Maximize convenience with two on-site conference centers. Whether for smaller group meetings (up to 20) or grand events (up to 70), our conference rooms are solutions for collaboration and success.



# OUTDOOR AMENITIES

Radiating sophistication, The Camber at Westfields features a captivating classic brick facade, opulent high-end finishes, and a wealth of tenant amenities in a scenic park-like environment. Outdoor seating provides a rejuvenating escape for group sessions. Nestled amidst beautifully landscaped grounds with a gazebo, pond, and water feature, it offers tranquil respites throughout the workday.

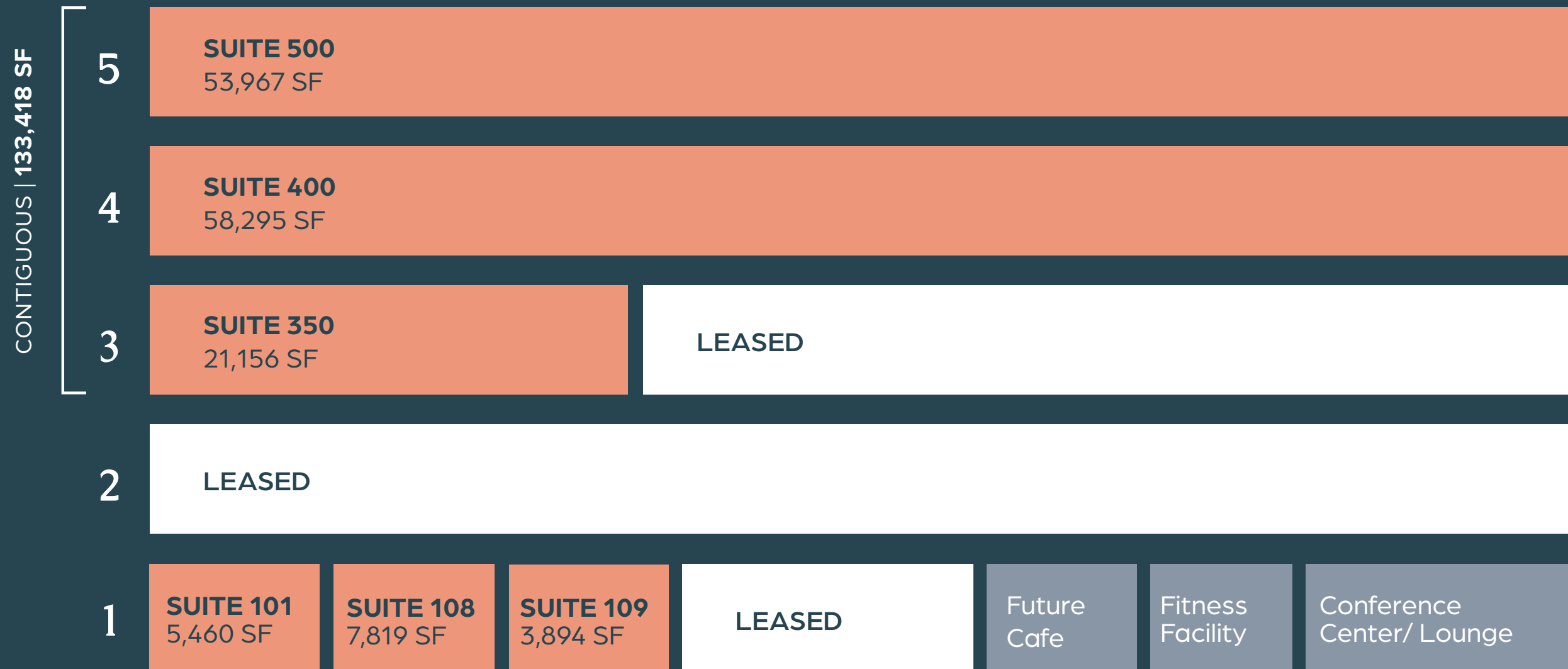
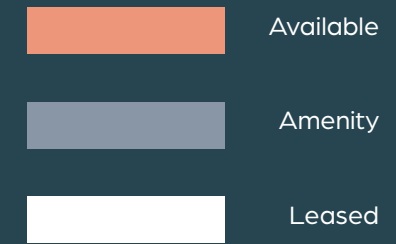







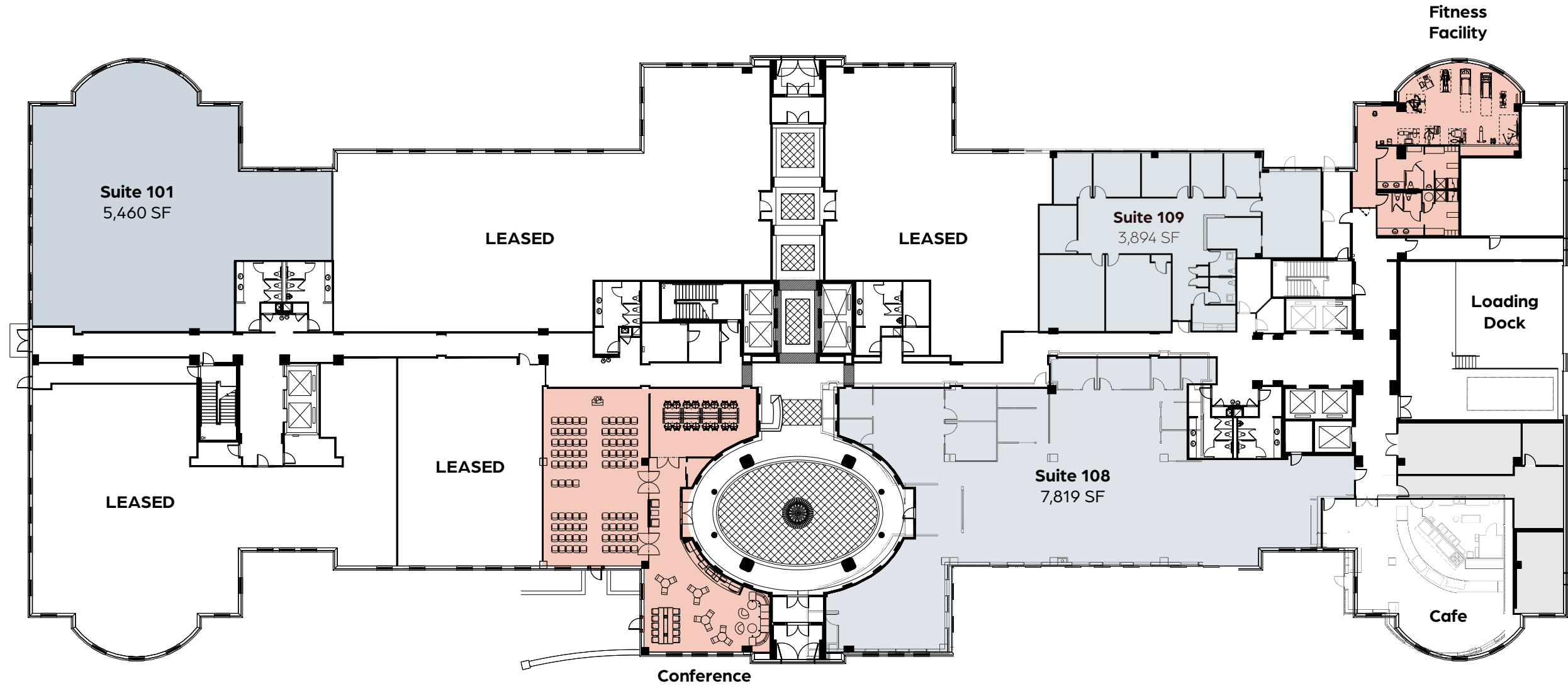
- RESTAURANTS**
  - Five Guys
  - Red Robin Gourmet
  - Starbucks
  - Panera Bread
  - Thai Basil
  - Two Amigos
  - Calletana's
  - Ottoman Kitchen
  - Megabytes Eatery
  - Bob Evans
  - Sheesh Grill
  - Noodles and Company
  - Anita's New Mexico
  - The Burger Shack
  - Lazy Dog
  - Foster's Grille
  - Don Luis Restaurant
  - Chick Fill A
  - Peets Cafe
  - Dunkin Donuts
- FEDERAL AGENCIES**
  - FBI
  - CIA
  - NRO
- HYPER-MARKETS**
  - Wegmans
  - Target
  - Costco
  - Walmart Supermarket
  - Seven Eleven

# NEARBY AMENITIES

# AVAILABILITIES



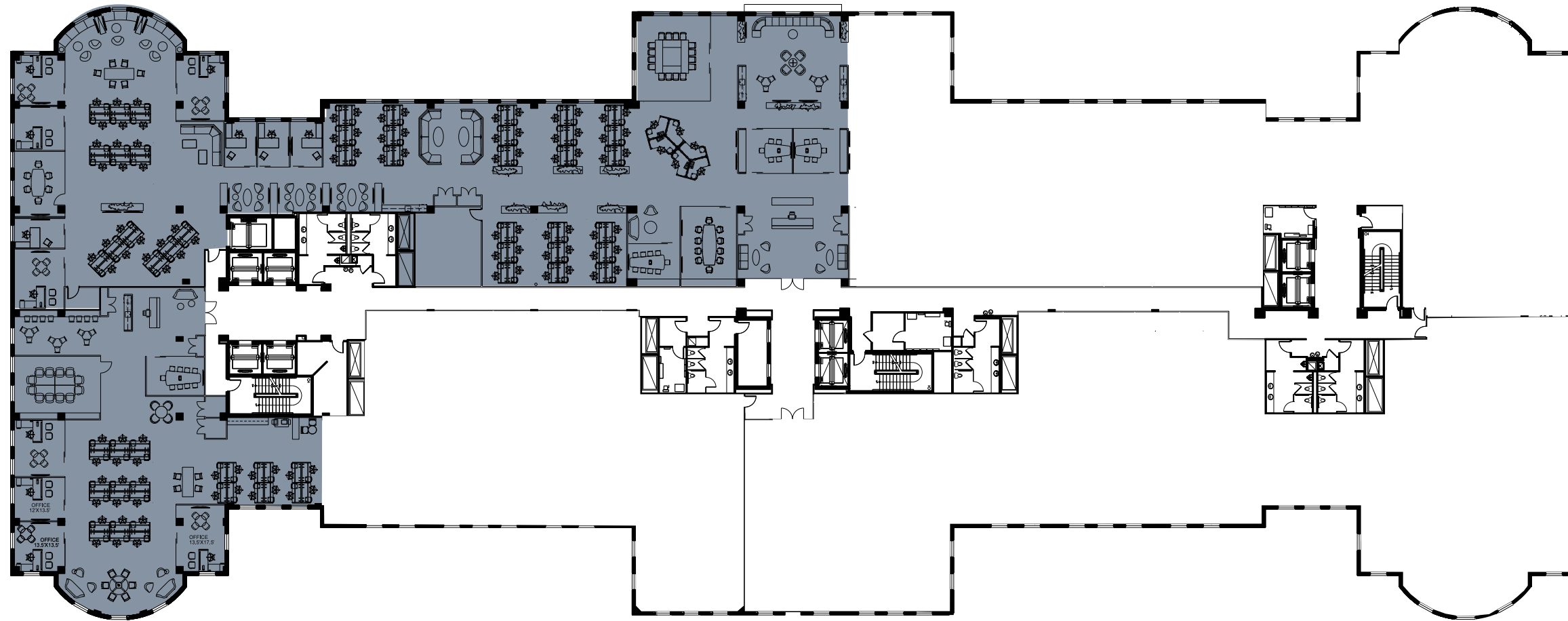
-  Amenity
-  Available
-  Leased



CLICK HERE TO VIEW THE SPACE

# First Floor

- Available
- Amenity
- Leased

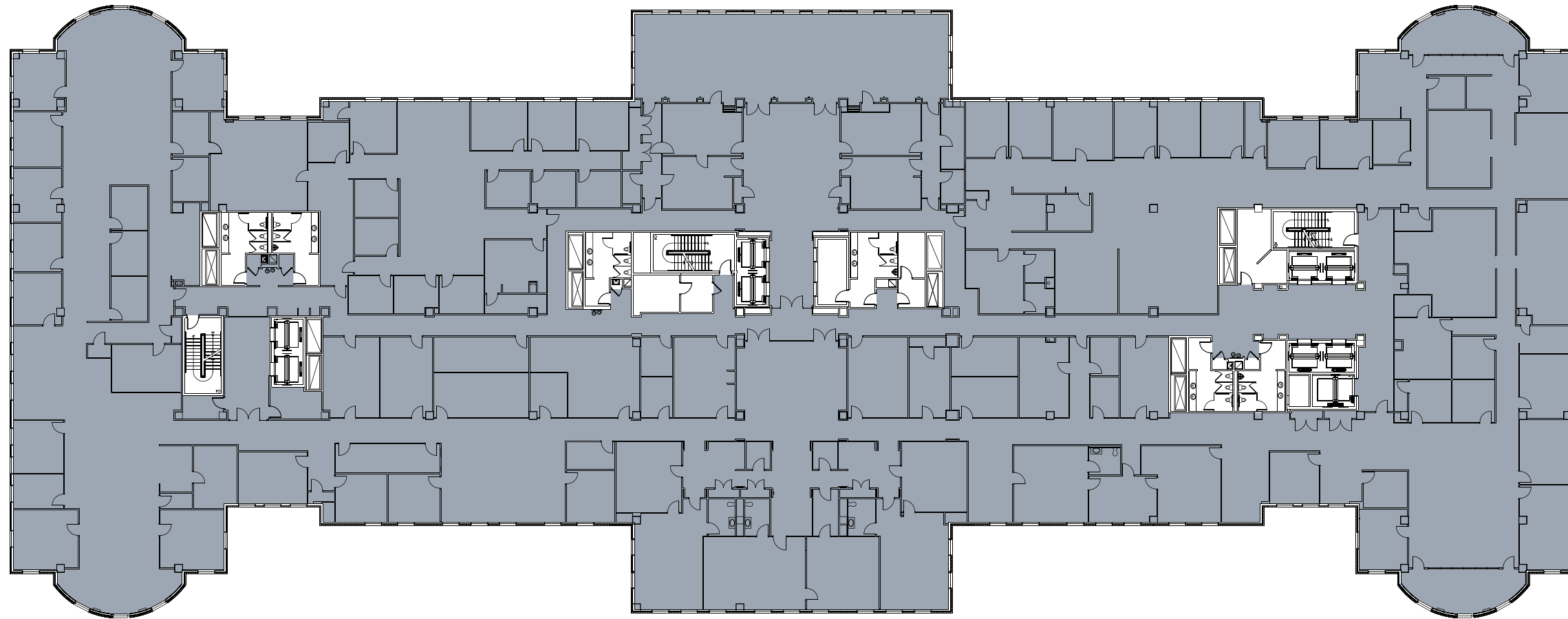


# Third Floor

21,156 SF



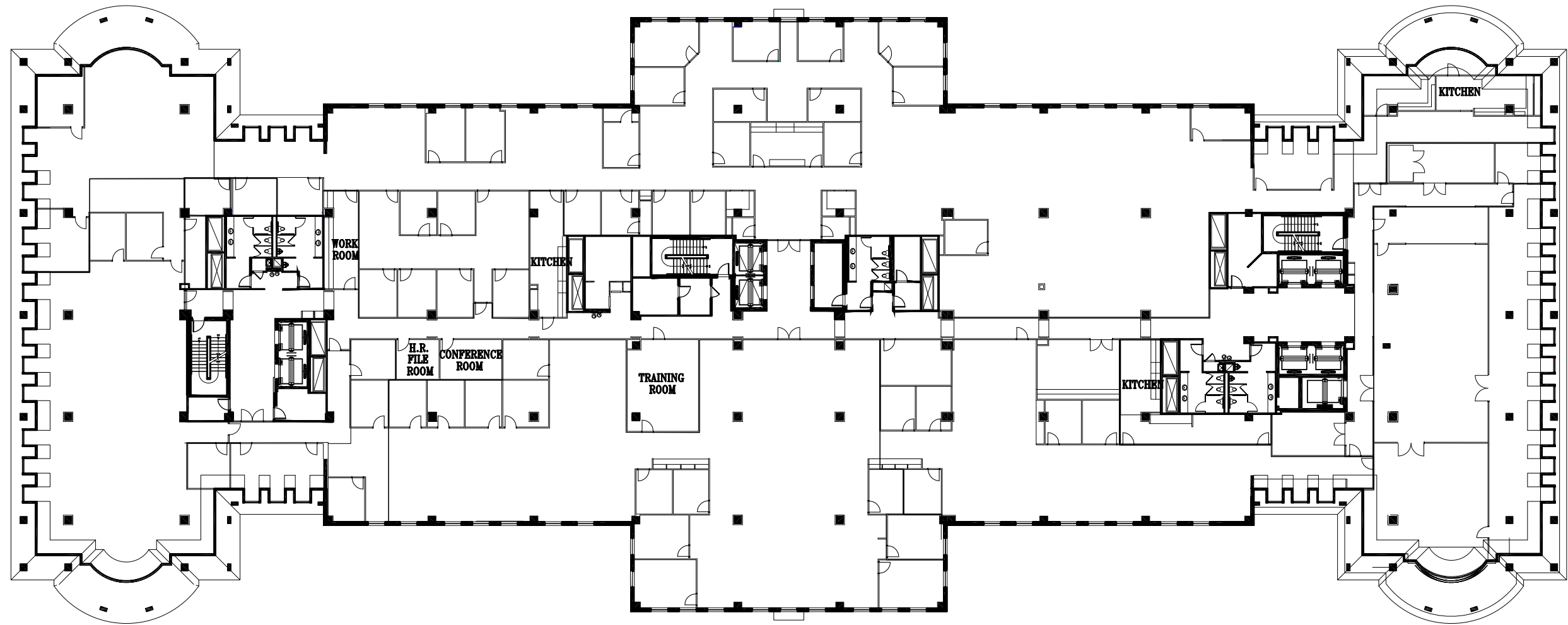
Available



# Fourth Floor

FULL FLOOR AVAILABLE 58,295 SF

Available



# Fifth Floor

FULL FLOOR AVAILABLE 53,967 SF





# THE CAMBER

AT WESTFIELDS



## LEASING INFORMATION

**Jeff Roman**

703.464.1548

[jeff.roman@streamrealty.com](mailto:jeff.roman@streamrealty.com)

**Carter Byrnes**

703.439.1096

[carter.byrnes@streamrealty.com](mailto:carter.byrnes@streamrealty.com)



14501 GEORGE CARTER WAY | CHANTILLY, VA