

For Lease

1550 Flower Street Glendale | CA



Presented By:

Randy Rohrer

818.244.3000

randy@pacwestonline.com

DRE#00672287

Chris Rohrer

818.624.1180

chris@pacwestonline.com

DRE#02018754

Ron Rohrer

818.309.0628

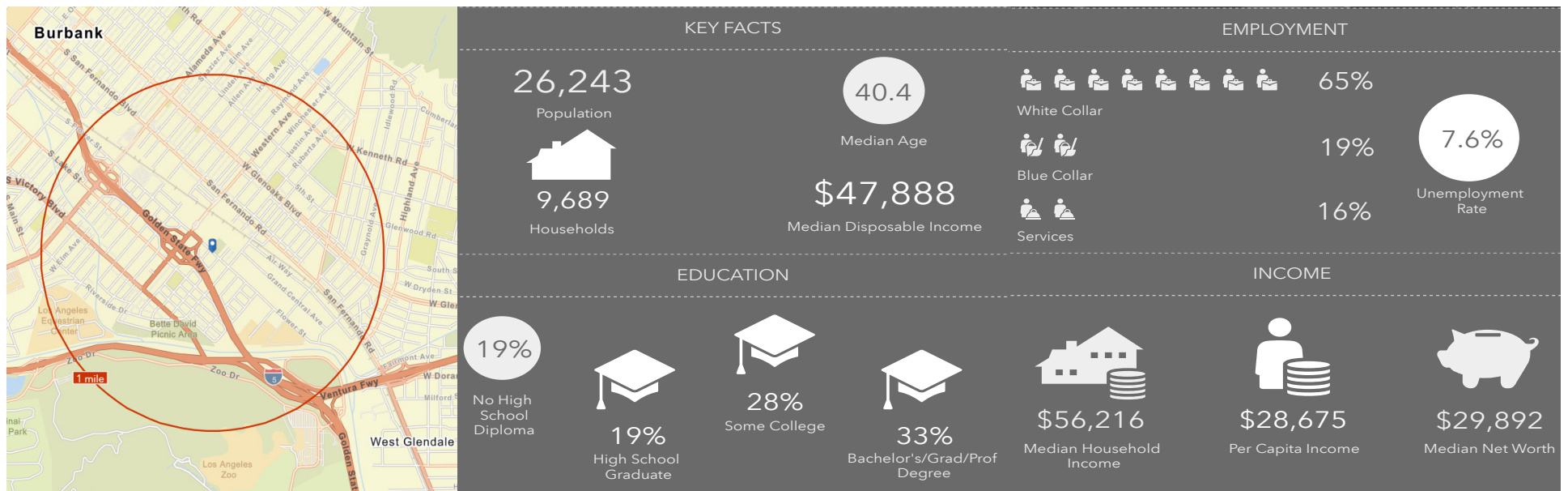
ron@pacwestonline.com

DRE#01918399



Property Information

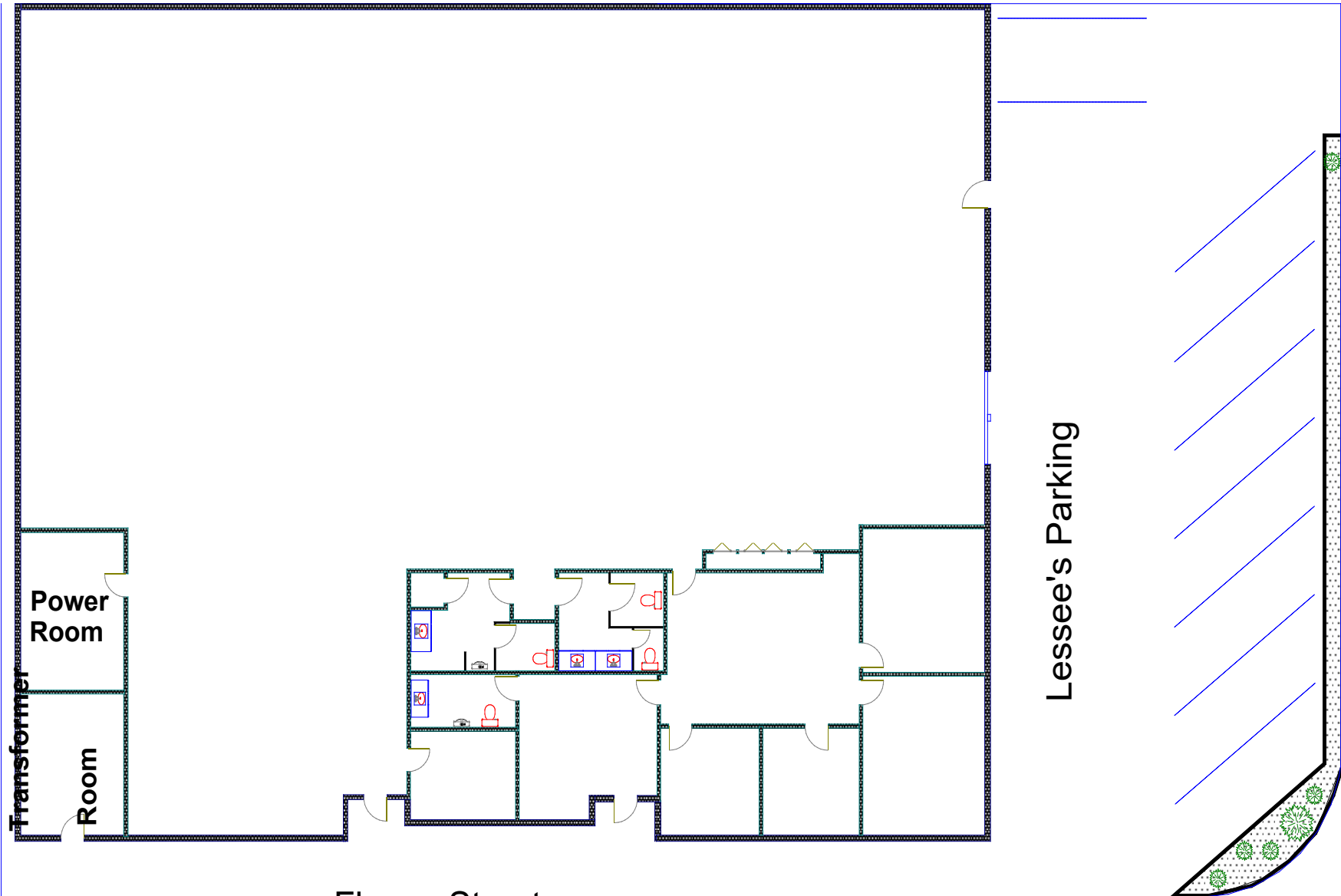
Available SF:	10,000 SF	›	Near Disney & DreamWorks
Office SF:	1,900 SF	›	Fully Air Conditioned
Land SF:	14,635	›	1,600 Amps
Asking Price:	\$16,000 (\$1.60/sf)	›	12' Clearance in Warehouse
Zoning:	IND	›	One 10x12 GL Door
Parking:	8	›	Business Friendly City
Year Built:	1955	›	Walk Score of 76



The facts contained herein, while not guaranteed as to accuracy, are accurate to the best of our knowledge and belief.

Floor Plan

No Parking



Lessee's Parking

Justin Street

Flower Street

Transformer Room

Power Room

Map Location



1550 FFlower St

Pacific West Business Properties, Inc.

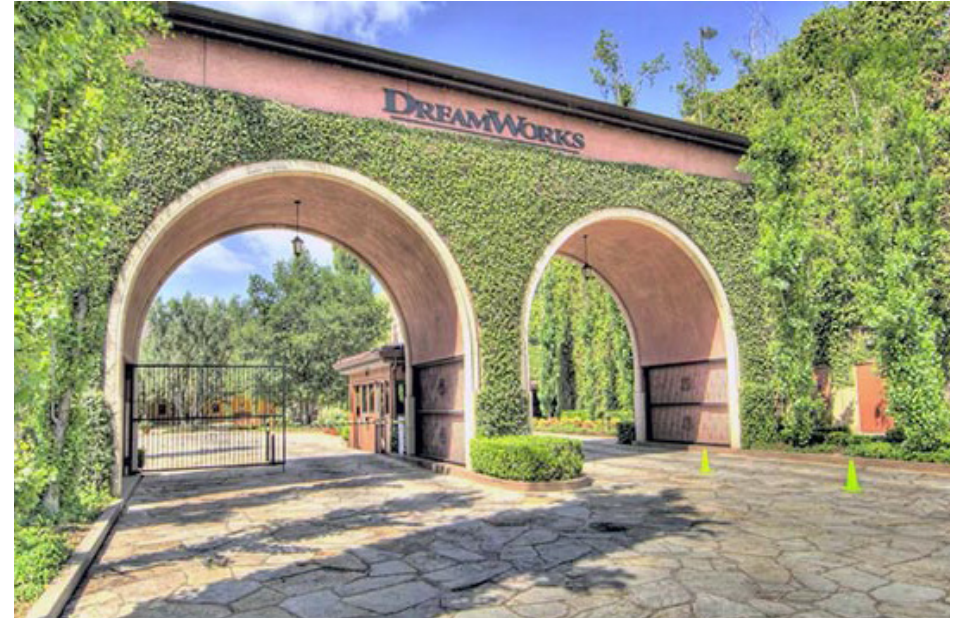
6624 San Fernando Road Glendale, CA 91201 | 818-244-3000



Neighborhood



Disney Grand Central Creative Campus



DreamWorks Studio



Little Ground Cafe



Griffith Manor Park