



7.5 Acres For Sale

28th Street and I-49, Rogers, AR

RAMSAY BALL
 BROKERAGE | ARKANSAS
 DIR: 479 845 1502
 MOB: 479 640 6405
 ramsay.ball@colliers.com



COLLIERS INTERNATIONAL
 4204 S Pinnacle Hills Pkwy, Ste 102
 Rogers, AR 72758
 479 636 9000
 www.colliers.com/arkansas

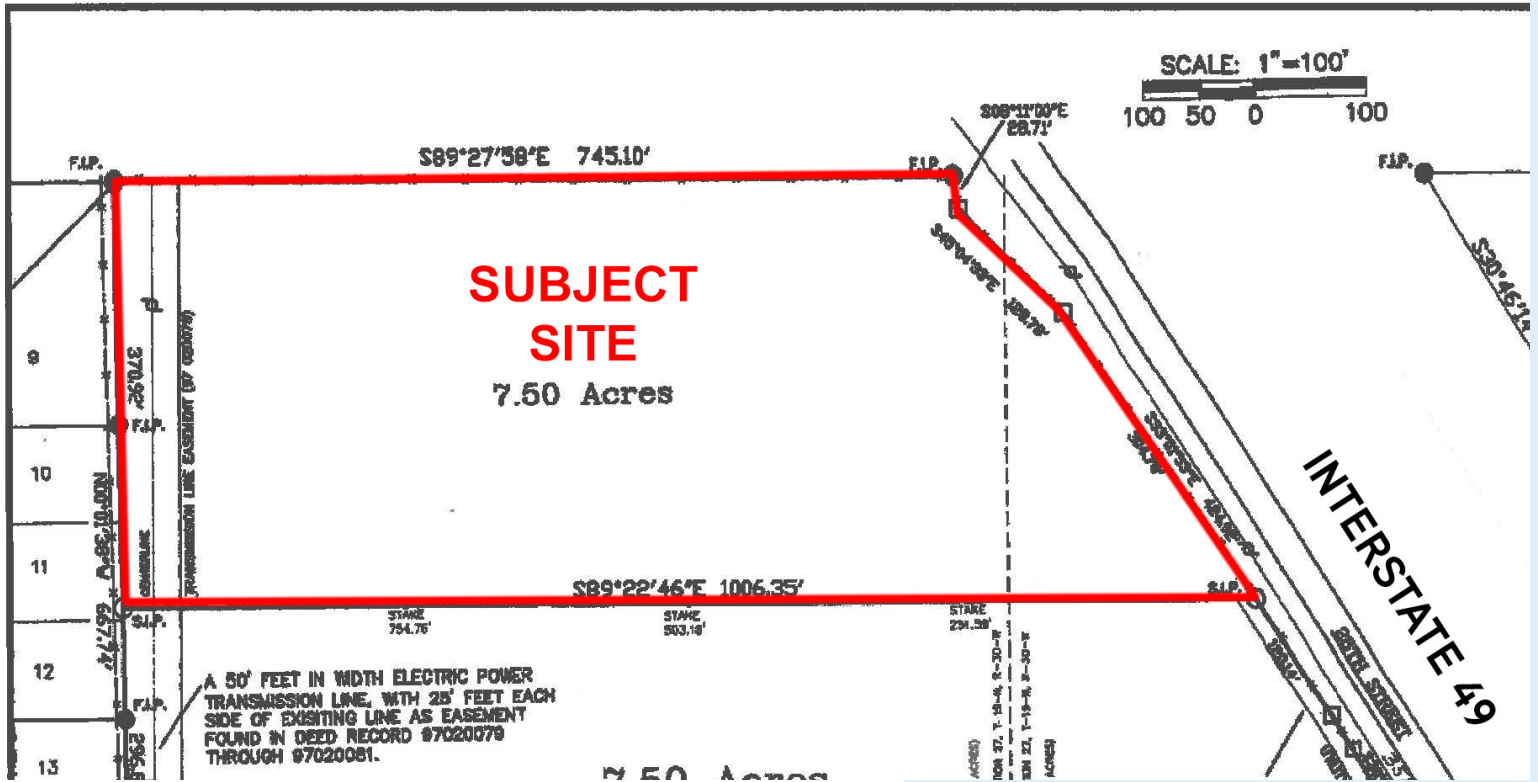
Accelerating success.

KEY FEATURES/HIGHLIGHTS

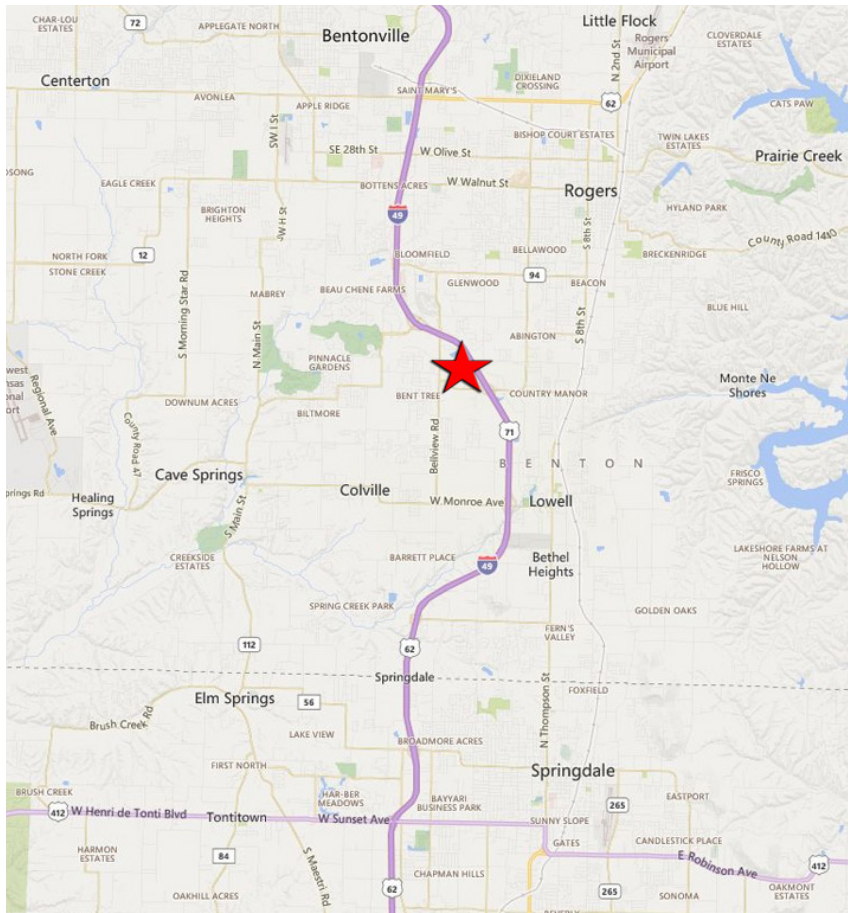
Price > \$1,250,000

- > 7.5 +/- Acres
- > Excellent visibility from Interstate 49 (71,000 cars per day)
- > Razorback Regional Greenway located at the back of the property
- > Site ready to develop
- > Great location with easy access from Pleasant Grove Road
- > Improved access planned from Pinnacle Hills
- > \$166,667 per acre
- > \$3.82 per square foot

SURVEY MAP



MAP



CONTACT US

RAMSAY BALL
 BROKERAGE | ARKANSAS
 DIR: 479 845 1502
 MOB: 479 640 6405
ramsay.ball@colliers.com



COLLIERS INTERNATIONAL
 4204 S Pinnacle Hills Pkwy, Ste 102
 Rogers, AR 72758
 479 636 9000
www.colliers.com/arkansas