



# Professional Office Space for Lease

## 2320 Courage Dr, Fairfield, CA 94533

Single story office building with approximately 8,300 sq ft of available office space, currently unoccupied and ready to lease.

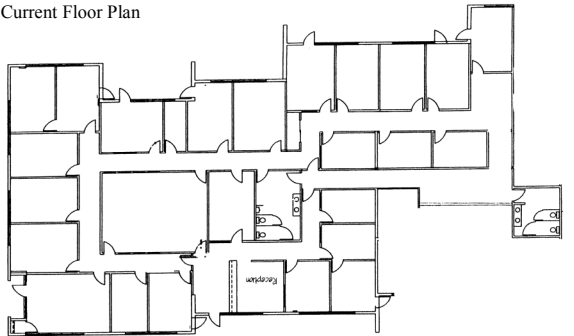
Space consists of individual private offices and conference rooms. Plenty of parking for employees and customers next to the building.

Located in one of the fastest growing areas in the Bay Area. This building is located in the Solano Business Park with excellent freeway access to Hwy 12, Hwy 80 and Hwy 680. Centrally located between San Francisco and Sacramento.

The building is wired for Comcast Business service. This will provide you with broadband internet speeds up to 250mbps downloading/25mbps uploading. In addition to internet, the building is wired for Comcast IP phones with managed phone services (VoiceEdge).



Current Floor Plan



**Contact: Denise Whitteaker**  
[denise@assistance-plus.com](mailto:denise@assistance-plus.com)  
**707-864-6366**

For lease by owner - No Broker Fees

# For Lease

**20,000 sq ft building with 8,300 sq ft available**