



PHYSICIAN OFFICES
6718 Lake Nona Blvd, Orlando, FL 32827



TAVISTOCK
DEVELOPMENT COMPANY

CLASS A
MEDICAL SPACE
FOR LEASE

FOR MORE INFO, CONTACT:

GINGER VETTER
C: 407.619.5245 | D: 407.816.6686
gvetter@tavistock.com



PHYSICIAN OFFICES
6718 Lake Nona Blvd, Orlando, FL 32827

NORTH-WEST VIEW



WEST ELEVATION



NORTH ELEVATION



**CLASS A
MEDICAL SPACE
FOR LEASE**

FOR MORE INFO, CONTACT:

GINGER VETTER
C: 407.619.5245 | D: 407.816.6686
gvetter@tavistock.com



PHYSICIAN OFFICES
6718 Lake Nona Blvd, Orlando, FL 32827



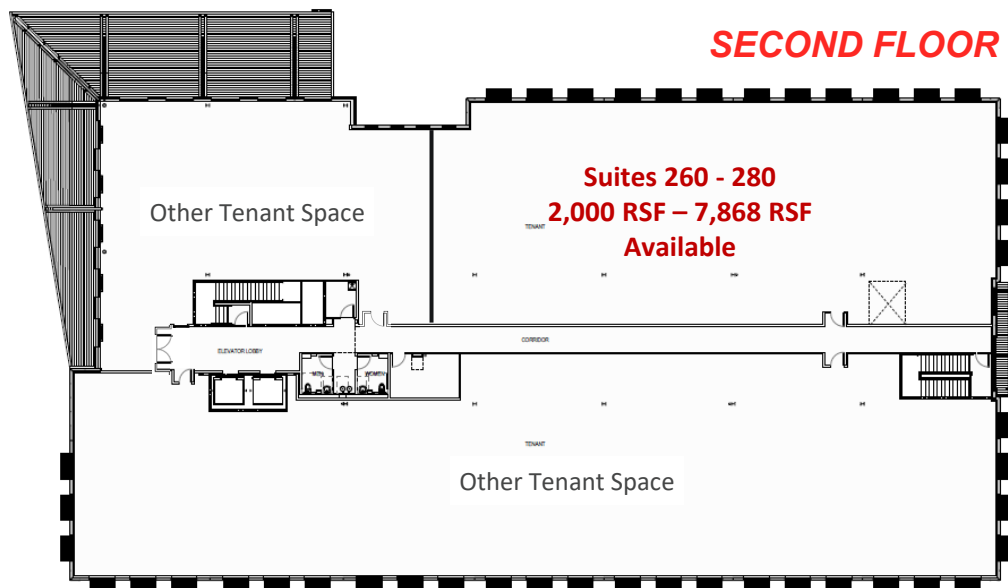
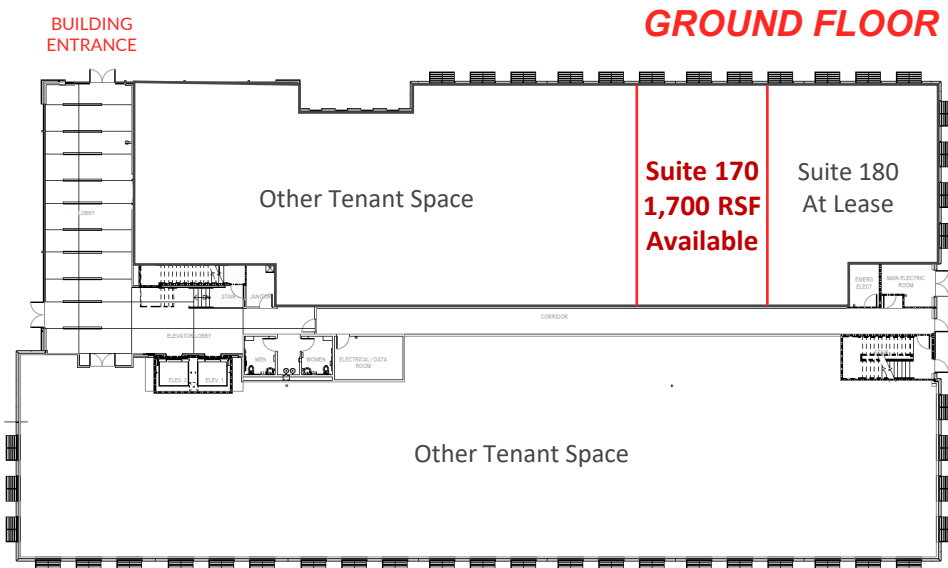
TAVISTOCK
DEVELOPMENT COMPANY

**CLASS A
MEDICAL SPACE
FOR LEASE**

FOR MORE INFO, CONTACT:

GINGER VETTER
C: 407.619.5245 | D: 407.816.6686
gvetter@tavistock.com

CLASS A MEDICAL OFFICE SPACE AVAILABLE



PHYSICIAN OFFICES 6718 Lake Nona Blvd, Orlando, FL 32827



TAVISTOCK
DEVELOPMENT COMPANY

CLASS A
MEDICAL SPACE
FOR LEASE

FOR MORE INFO, CONTACT:

GINGER VETTER
C: 407.619.5245 | D: 407.816.6686
gvetter@tavistock.com

HOSPITAL

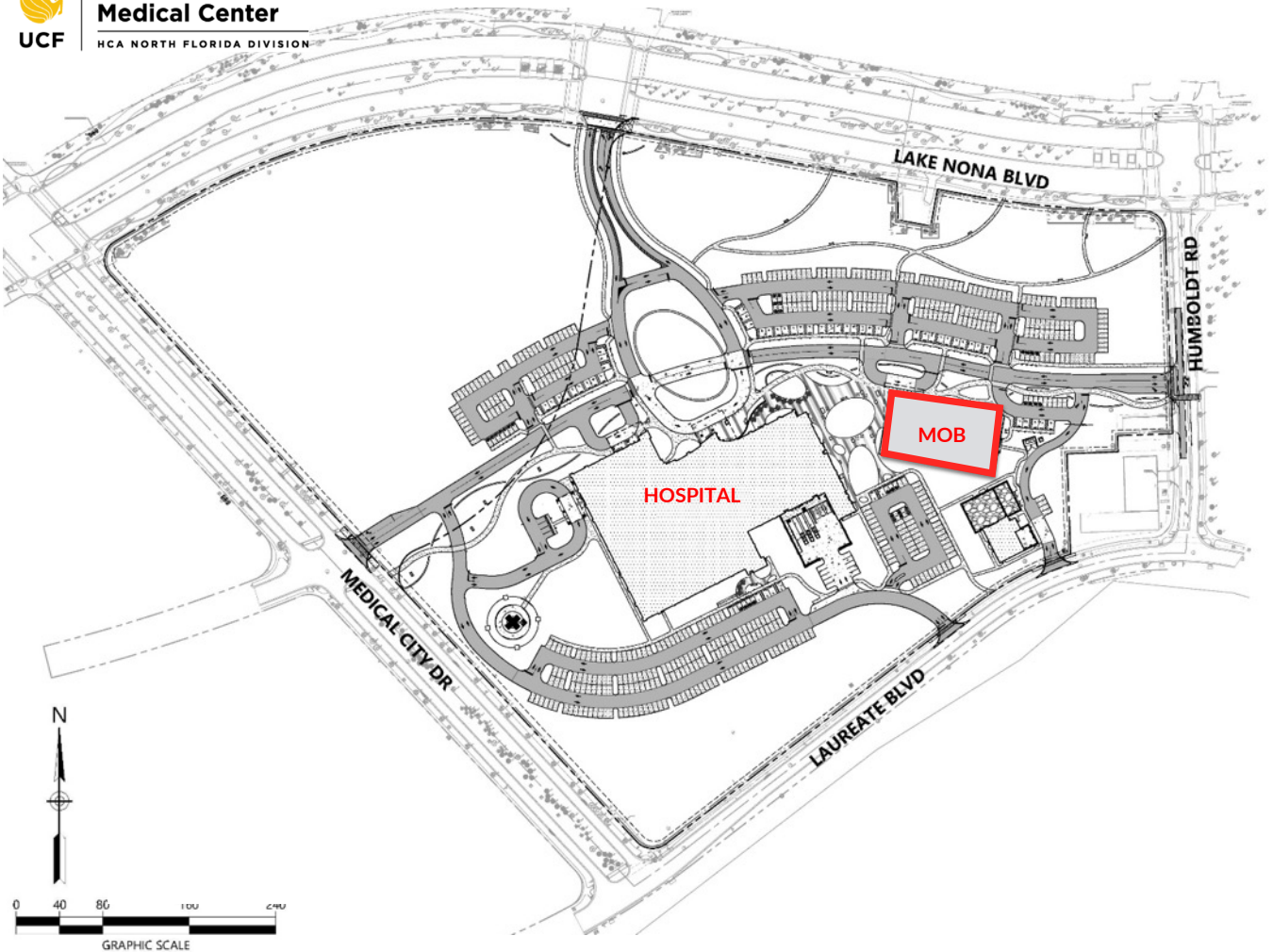


PHYSICIAN OFFICES



Lake Nona
Medical Center

HCA NORTH FLORIDA DIVISION



PHYSICIAN OFFICES ARE LOCATED NEXT TO THE HOSPITAL ON THE UCF HCA LAKE NONA MEDICAL CAMPUS



TAVISTOCK
DEVELOPMENT COMPANY

CLASS A
MEDICAL SPACE
FOR LEASE

FOR MORE INFO, CONTACT:

GINGER VETTER
C: 407.619.5245 | D: 407.816.6686
gvetter@tavistock.com



LAKE NONA MEDICAL CITY

Lake Nona's health & life sciences campus represents a deliberate strategy to create a centralized focus on sophisticated medical treatment, research, and education in Orlando.

In just 10 years, Lake Nona has become home to some of the nation's top hospitals, universities, research institutions and health and biomedical companies. Lake Nona health and life sciences anchor tenants, include:

- University of Central Florida's (UCF) Health Sciences Campus
- UCF College of Medicine
- UCF Lake Nona Medical Center
- UCF Lake Nona Cancer Center
- Orlando Veterans Affairs Medical Center & SimLearn Center
- Nemours Children's Hospital
- University of Florida Research & Academic Center
- GuideWell Innovation Center
- Lake Nona Performance Club

PHYSICIAN OFFICES
6718 Lake Nona Blvd, Orlando, FL 32827



TAVISTOCK
DEVELOPMENT COMPANY

CLASS A
MEDICAL SPACE
FOR LEASE

FOR MORE INFO, CONTACT:

GINGER VETTER
C: 407.619.5245 | D: 407.816.6686
gvetter@tavistock.com



LOCATION AND PROPERTY FEATURES

- 45,513 SF, 2-story, Class A Medical Office Building in the heart of Lake Nona Medical City
- Located on the UCF Lake Nona Medical Center Campus
- Adjacent to the UCF HCA Adult Teaching Hospital
- Surface parking at a ratio of 4.5/1,000 RSF
- In very close proximity to Lake Nona Town Center, a multi-use project including Class A office, restaurants, retail, hotels, entertainment venues and state-of-the-art Lake Nona Performance Club
- Multiple housing options nearby
- Under 10 minutes from Orlando Int'l Airport with quick access to SR 417, SR 528, and Florida's Turnpike



TAVISTOCK
DEVELOPMENT COMPANY

CLASS A
MEDICAL SPACE
FOR LEASE

FOR MORE INFO, CONTACT:

GINGER VETTER
C: 407.619.5245 | D: 407.816.6686
gvetter@tavistock.com