

FOR LEASE

MEDICAL | FOR LEASE | SONORA, CA

800 Delnero Drive

Sonora, California 95370

BUILDING SIZE

±2,200 SF

Fully Improved Dental Office

LEASE RATE

Call for Rate

Contact Listing Agent

LOCATION

Delnero Dr & Greenley Rd

Signalized Corner

OVERVIEW

Space Overview

CoSol Commercial Real Estate is pleased to present 800 Delnero Drive, Sonora — a fully improved $\pm 2,200$ SF dental office available for lease at the signalized corner of Delnero Drive and Greenley Road in the heart of Sonora's Foothill Medical Center campus.

Recently renovated and previously occupied by Sonora Modern Dentistry & Orthodontics, this turn-key medical suite features 6 operatories, a reception area, private office, sterilization room, staff break area, digital lab, and a dedicated restroom — all finished to a high standard with hardwood-style flooring, vaulted ceilings, and natural light throughout.

A standby generator and rooftop solar are on site. The property is ideally positioned within an established medical campus offering excellent visibility, ample parking, and convenient access for patients and staff.



ADDRESS

800 Delnero Drive, Sonora, CA 95370

AVAILABLE SF

$\pm 2,200$ SF

LEASE RATE

Call for Information

USE TYPE

Medical / Dental Office

OPERATORIES

6 Operatories

GENERATOR

On-Site Standby Generator

SOLAR

Rooftop Solar System

CAMPUS

Foothill Medical Center

PARKING

Ample On-Site Parking

STATUS

Available — Call for Information

Property Highlights

01

Turn-Key Dental Office

Fully improved and recently renovated — 6 operatories, sterilization room, digital lab, and staff break area. Minimal TI required to open for business.

02

Signalized Corner Location

Hard corner of Delnero Drive and Greenley Road within Foothill Medical Center — excellent visibility and easy patient access from a signalized intersection.

03

On-Site Generator & Solar

Standby generator ensures uninterrupted power for medical equipment. Rooftop solar reduces operating costs — a competitive advantage for any dental operator.

04

High-Quality Improvements

Recent renovation features vaulted ceilings, hardwood-style flooring, dark custom cabinetry, granite countertops, chandelier lighting, and abundant natural light.

05

Digital Lab Included

Dedicated digital lab space equipped with infrastructure for 3D printing, milling, and digital dentistry workflows — a significant value-add for a modern practice.

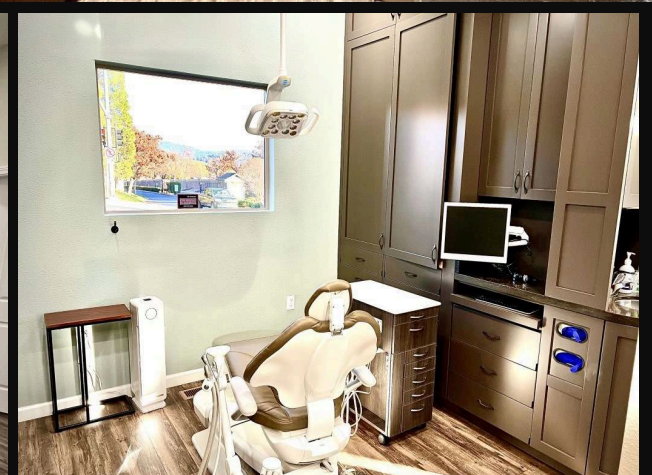
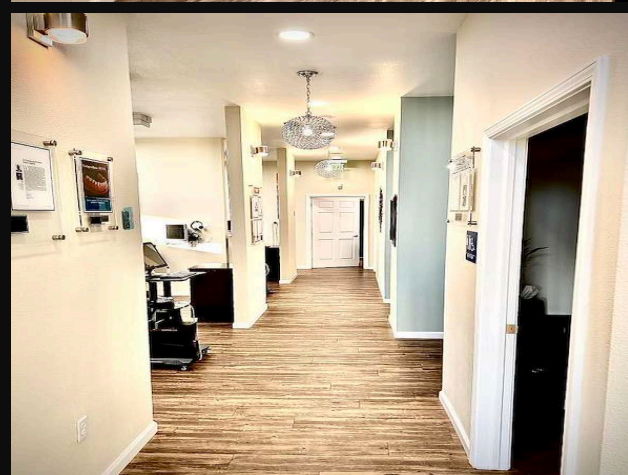
06

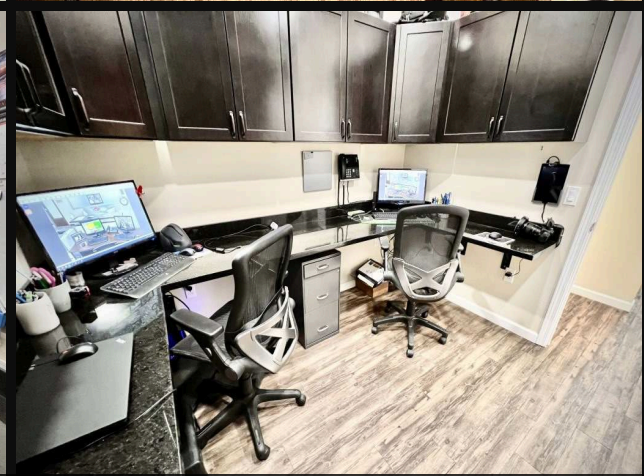
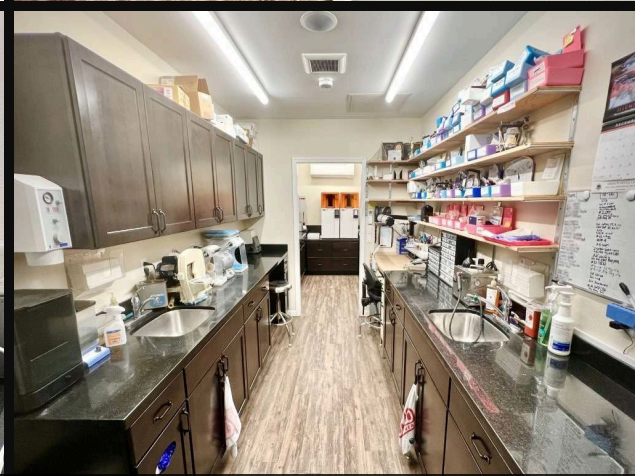
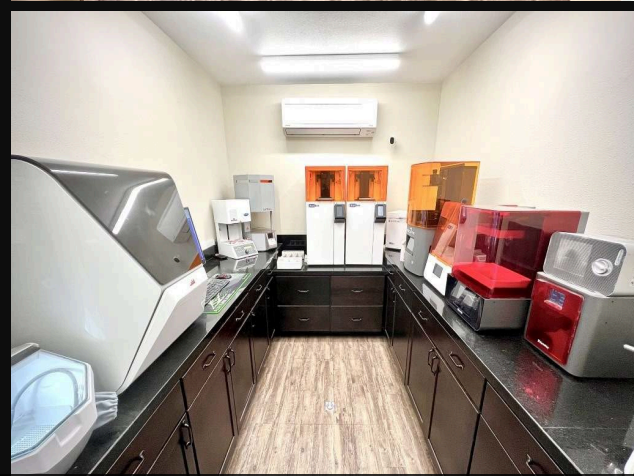
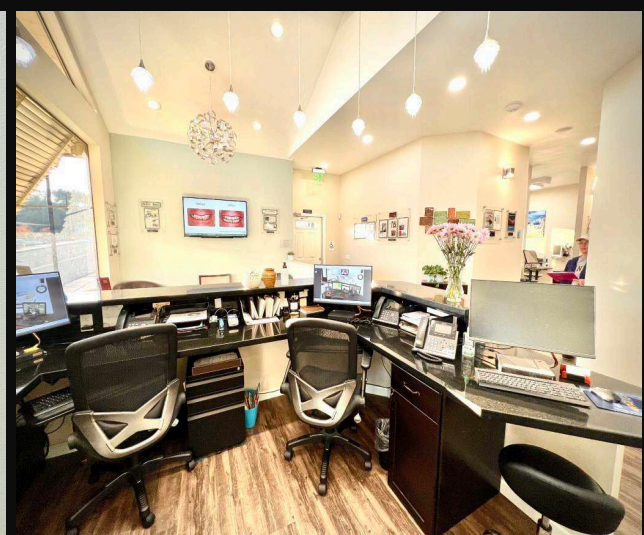
Established Medical Campus

Co-located within Foothill Medical Center alongside other healthcare providers — built-in referral ecosystem and a proven patient destination in Sonora.



PROPERTY PHOTOGRAPHY | 800 DELNERO DRIVE, SONORA, CA | EXTERIOR





Property Details

Address

800 Delnero Drive, Sonora, CA 95370

Available SF

±2,200 SF

Operatories

6 Operatories

Solar

Rooftop Solar System

Campus

Foothill Medical Center

City

Sonora, CA 95370

Use Type

Medical / Dental Office

Lease Rate

Call for Information

Generator

On-Site Standby Generator

Parking

Ample On-Site Surface Parking

Intersection

Delnero Dr & Greenley Rd

Status

Available — Call for Information

FOR MORE INFORMATION

800 Delnero Drive, Sonora

±2,200 SF | Dental Office | Call for Rate | Sonora, CA 95370



Jake Maiorino

CoSol Commercial Real Estate

(209) 521-1591

jmaiorino@cosol.net

Associate | Lic. 02091879

2020 Standiford Ave, Bldg A | Modesto, CA 95350 | www.CoSol.net | DRE Lic. #02010465

The information presented, while not guaranteed, has been secured from sources we deem reliable. However, no warranty or representation, express or implied, is made as to the accuracy of the information contained herein.