

3601 N SOUTHPORT AVENUE

lakeview / chicago, il



MID-AMERICA® URBAN

AVAILABLE IMMEDIATELY



3601 N SOUTHPORT AVENUE

lakeview / chicago, il

ADDRESS

3601 N Southport Avenue
Unit 1E
Chicago, Illinois

NEIGHBORING RETAILERS

sweetgreen



lululemon
athletica

Abercrombie
& Fitch



Sweaty Betty

southport grocery
and cafe



PAPER
SOURCE

third love

AVAILABILITY

950 SF

FEATURES

Rare, small shop opportunity fronting Addison just off the famed Southport Corridor in Lakeview

Surrounded by a unique mix of international, national and local retailers and restaurateurs

Less than 0.5 miles from the Southport Brown Line El Stop (651,519 riders)

Less than a 10 minute walk down Addison from the infamous Wrigley Field (3.2M visitors)

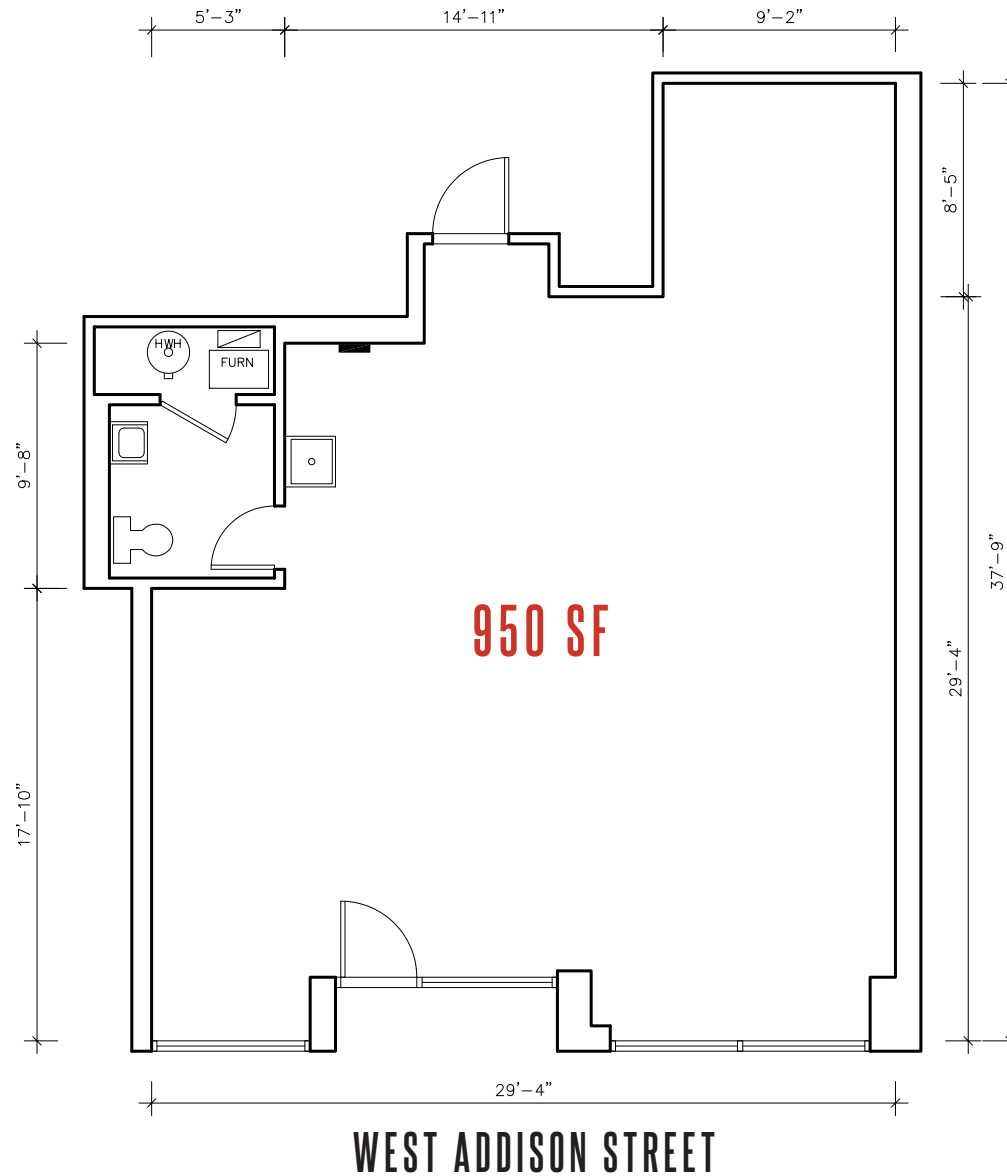
DEMOGRAPHICS

	.5M	1M	1.5M
POPULATION	19,461	84,746	184,799
HOUSEHOLDS	9,204	43,544	99,001
AVG HOUSEHOLD INCOME	\$207,301	\$179,410	\$164,500
DAYTIME POPULATION	14,598	67,335	139,747

3601 N SOUTHPORT AVENUE

lakeview / chicago, il

FLOOR PLAN



3601 N SOUTHPORT AVENUE

lakeview / chicago, il

TRADE AREA MAP





let's **BIG**
talk.

IDEAS?

LARA KEENE

Mid-America Real Estate Corporation

630.481.4038

LKeene@MidAmericaGrp.com

ABBY RUZEVICH

Mid-America Real Estate Corporation

630.481.4037

ARuzevich@MidAmericaGrp.com



MID-AMERICA[®] URBAN