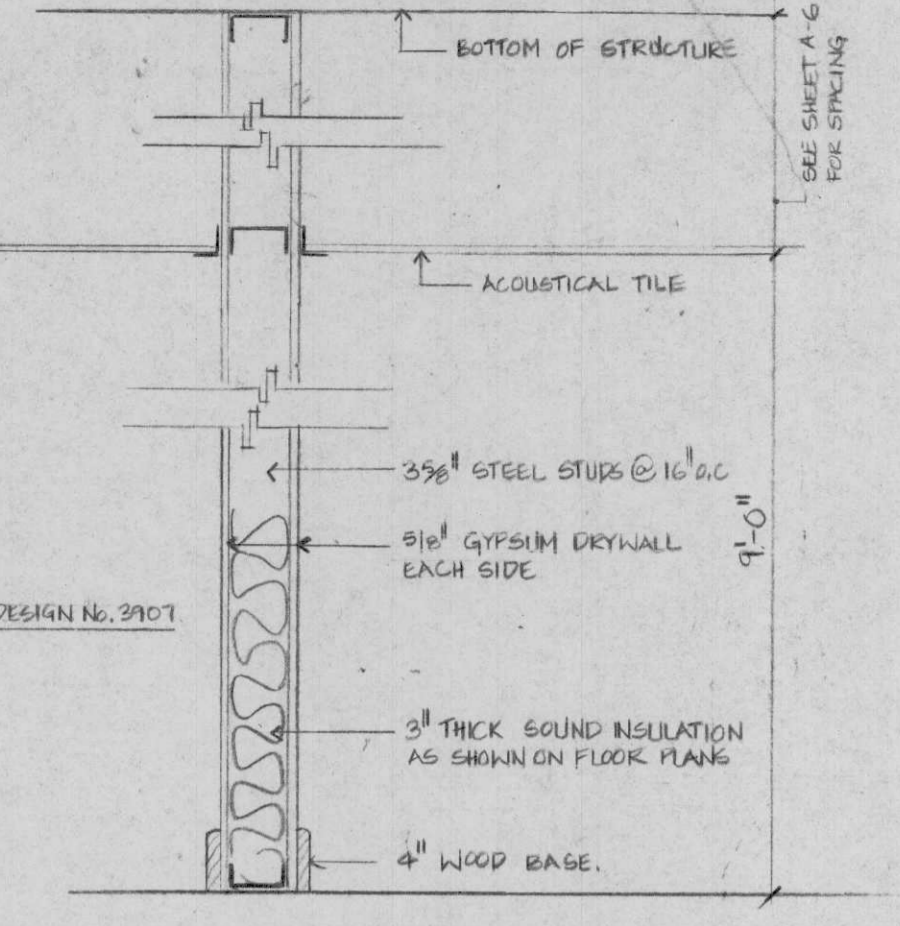
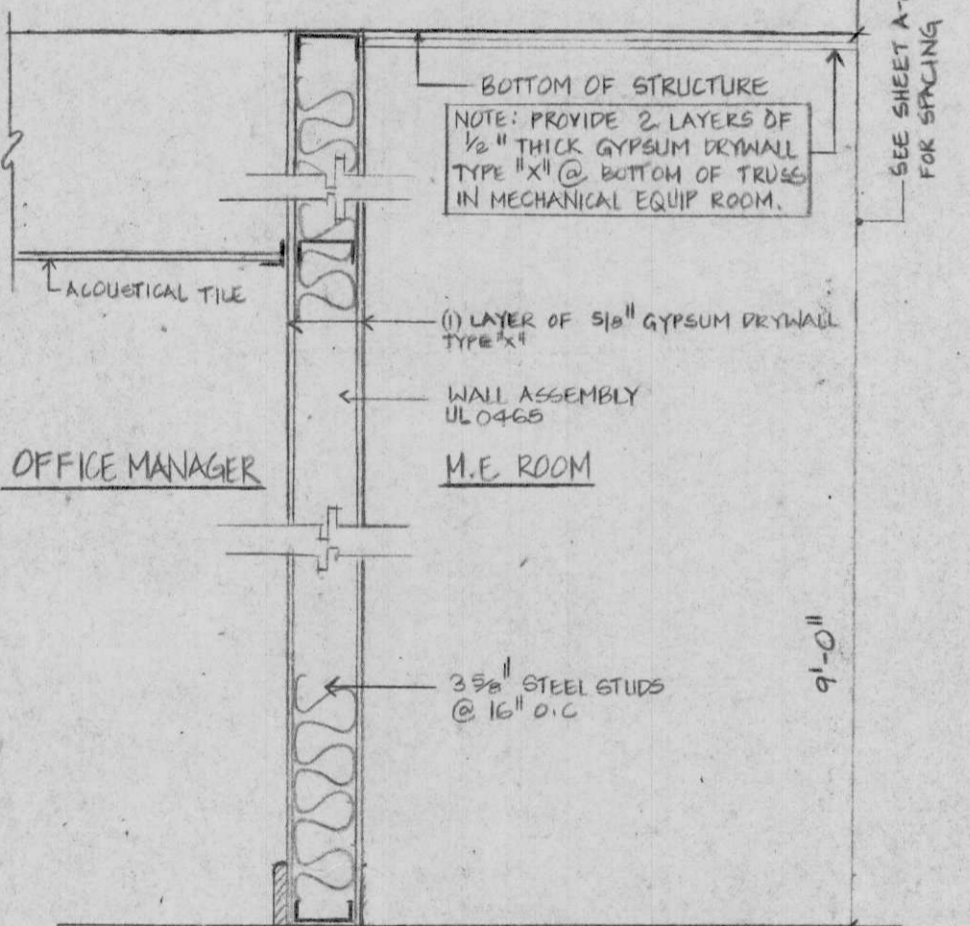


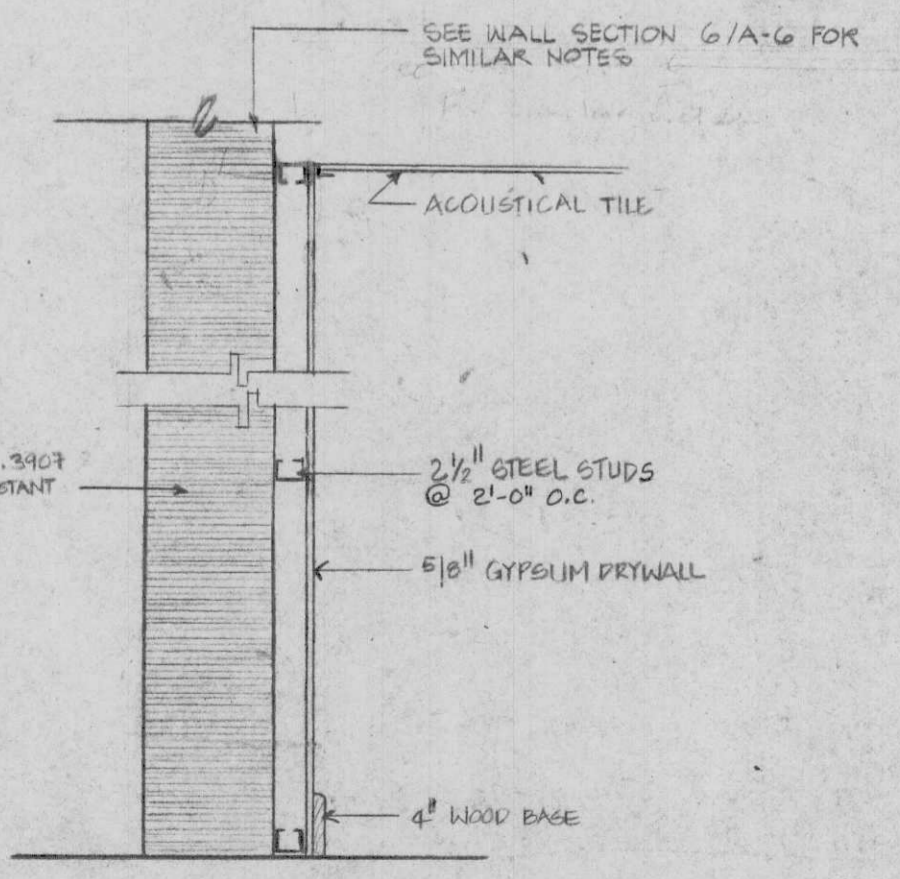
THESE DRAWINGS ARE THE PROPERTY OF THE ARCHITECT AND MAY NOT BE USED IN WHOLE OR IN PART WITHOUT WRITTEN CONSENT OF THE ARCHITECT VIOLATORS SUBJECT TO LEGAL ACTION



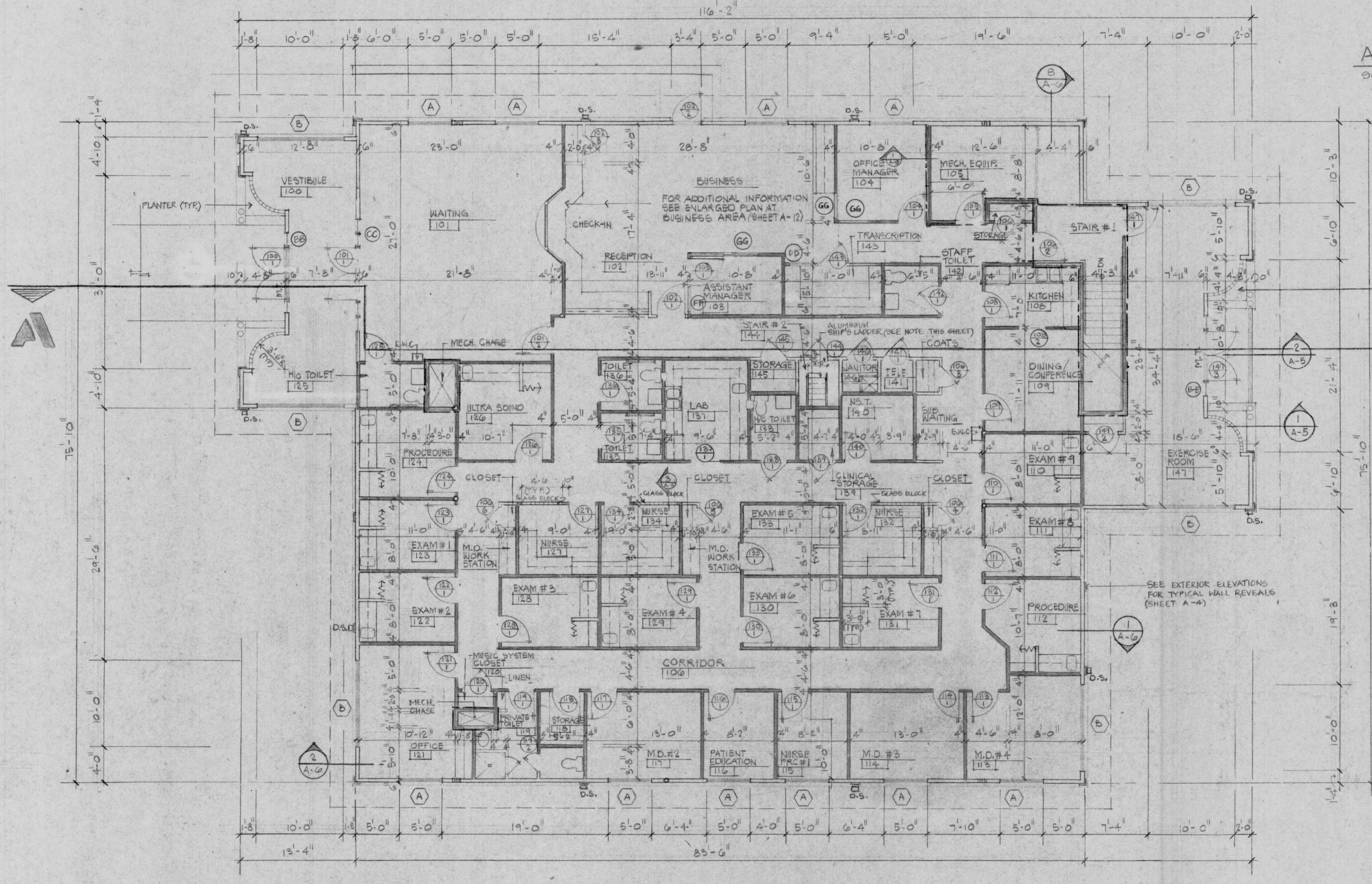
TYPICAL STUD WALL
SCALE: 1/2" = 1'-0"



ONE HOUR FIRE RATED STEEL STUD WALL
SCALE: 1/2" = 1'-0"

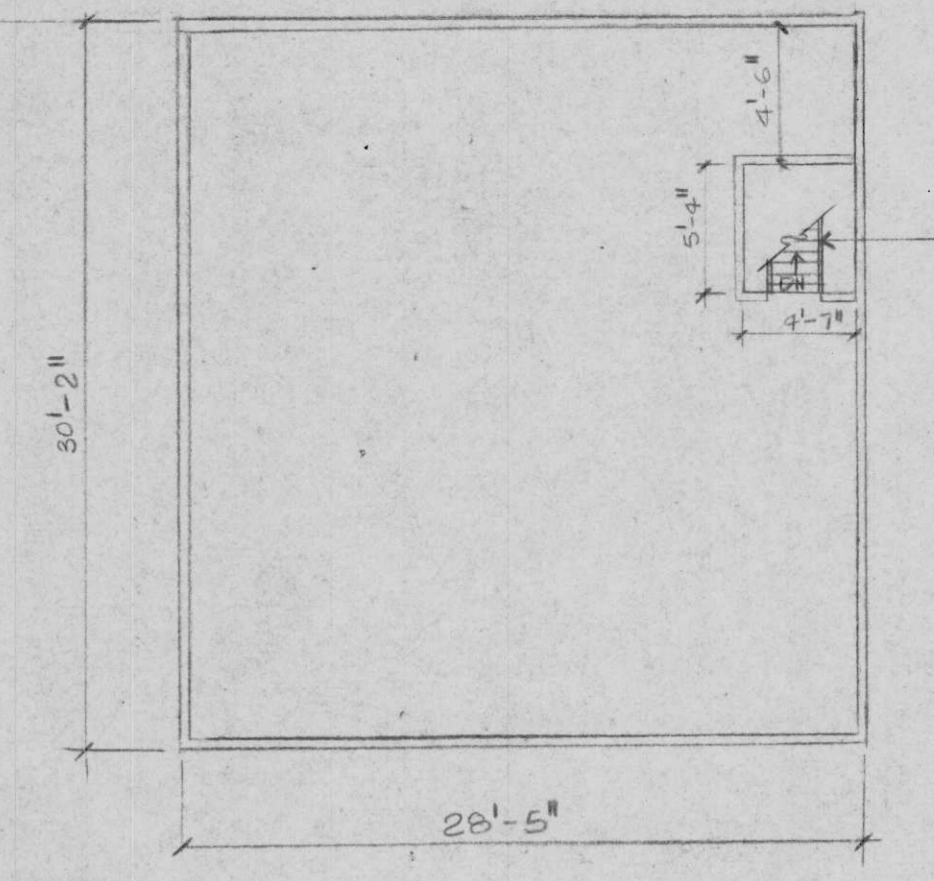


ONE HOUR FIRE RATED MASONRY WALL
SCALE: 1/2" = 1'-0"



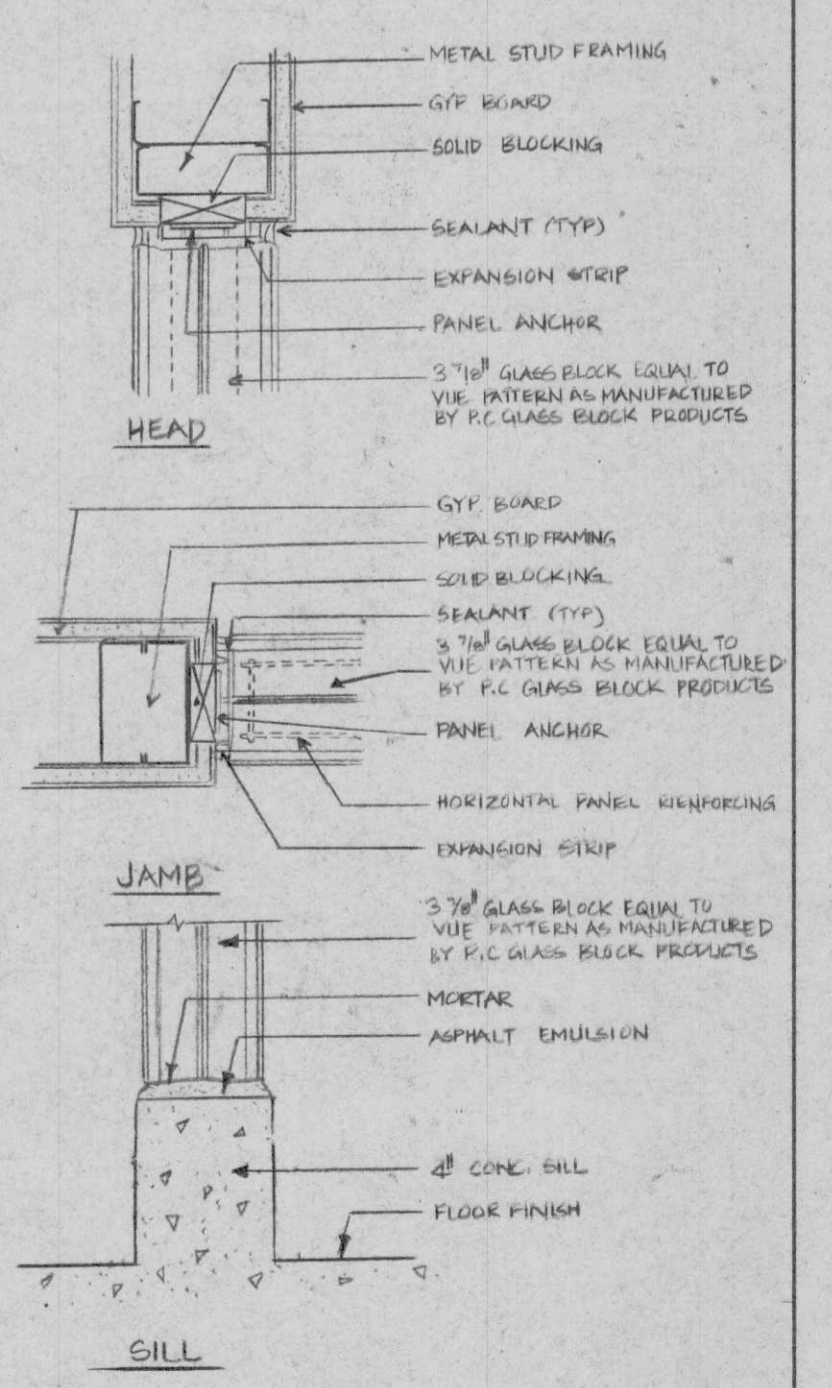
UPPER FLOOR PLAN
SCALE: 1/8" = 1'-0"

--- DENOTES THE FIRE RATED WALL
 - - - - - DENOTES SOUND INSULATED WALLS



ATTIC STORAGE FLOOR PLAN
SCALE: 1/8" = 1'-0"

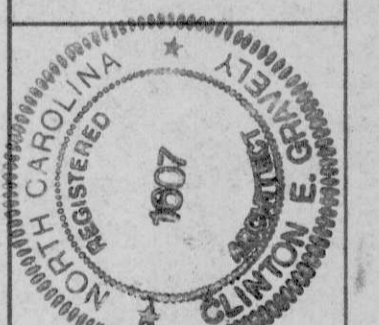
ALUMINIUM SHIP'S LADDER FIXED BETWEEN 63" TO 75" TREADS SHALL BE A MINIMUM OF 1 1/2" AND A MAXIMUM OF 12" RISERS SHALL BE A MINIMUM OF 9/16" AND A MAXIMUM OF 1/2" WITH A 1 1/2" O.D. ECH. 40 ALUMINIUM PIPE HANDRAIL. LADDER SHALL BE AS MANUFACTURED BY PRECISION STAIR CORPORATION OR APPROVED EQUAL.



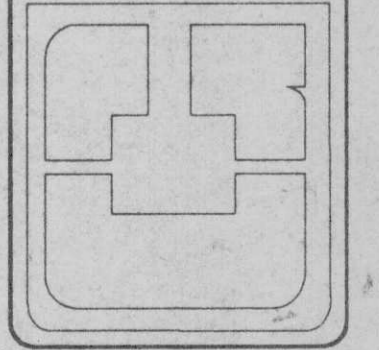
INTERIOR GLASS BLOCK WALL DETAILS
NO SCALE:

JOB NO.
G-572-94
DATE
JUNE, 1995
DRAWN BY
CHECKED BY
REVISIONS

MEDICAL FACILITIES
FOR
KELBERY PROPERTIES
GASTONIA, NORTH CAROLINA



CLINTON E. GRAVELY A.I.A.
ARCHITECT/ASSOCIATES
ARCHITECTS PLANNERS
9101 275-5183 SUITE B GRANELLY BUILDING 500 BANNER AVENUE
GREENSBORO, NORTH CAROLINA 27401-4388
FAX (910) 275-9885



ARCHITECTURAL SHEET
A-3
OF 13