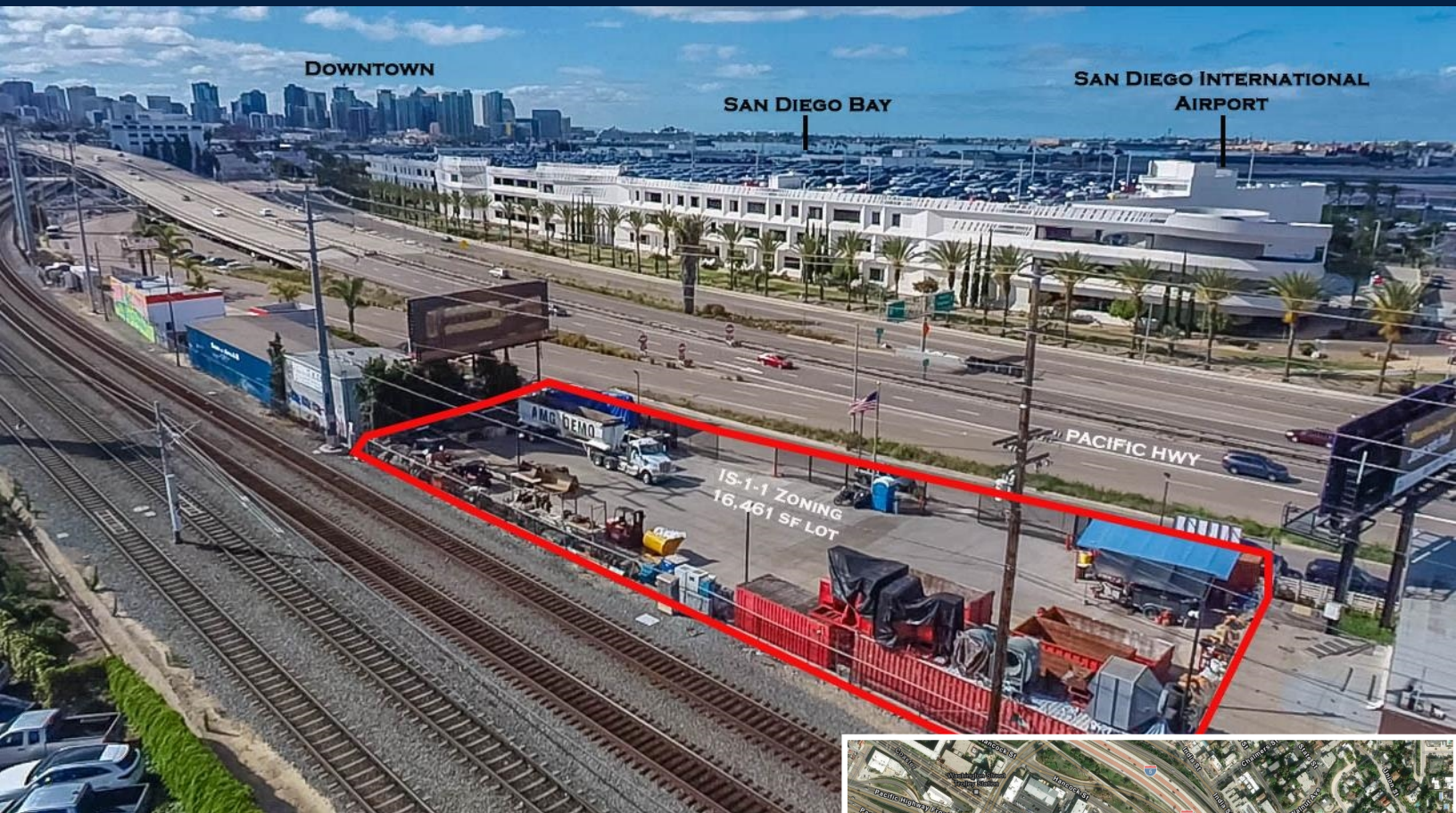


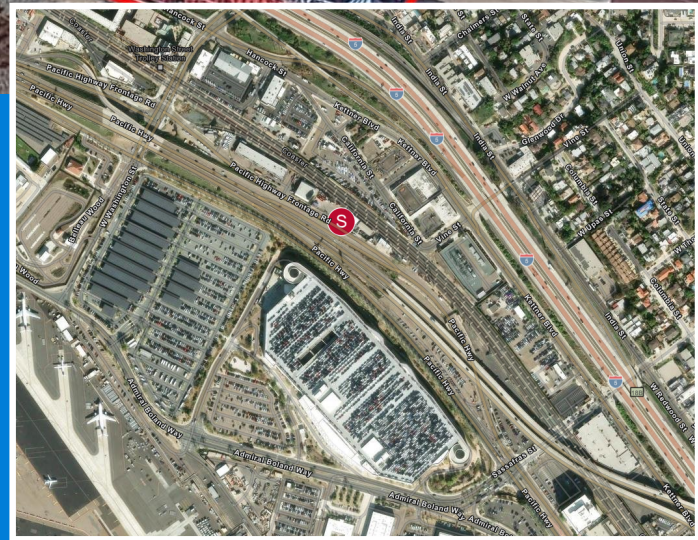
FOR SALE OR LEASE: 16,461 sf concrete paved lot

3571 Pacific Highway
San Diego CA 92101



HIGHLIGHTS:

- » Great location! Close to Airport and Downtown San Diego
- » High Visibility and easy access to Freeways
- » Industrial Zoned IS-1-1 - Secured concrete 16,461 sf Vacant lot
- » Fully fenced with two 30ft wide automatic gates for easy access
- » Fully concrete paved lot with two driveways to access
- » Lot has sewer, water, power and internet
- » Parking lot poles with cameras
- » High traffic count with 62,000 cars per day
- » Contact office for terms



Exclusively Marketed by:

Bob Rodrigues

Real Properties Group Real Estate, Inc

Broker-Owner

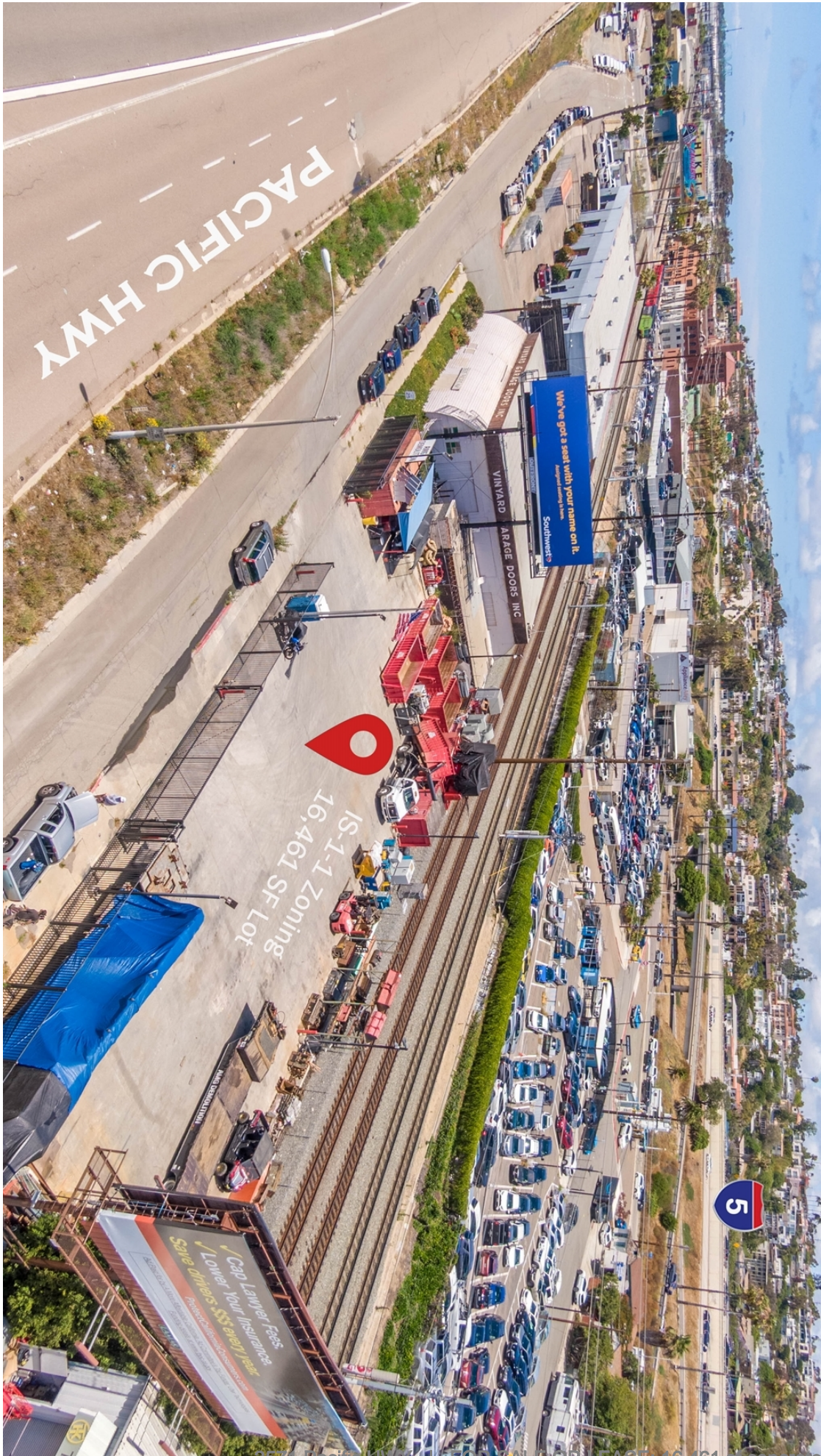
(619) 987-6768

bob@rpgre.com

01864725

3687 Voltaire Street Suite A
San Diego, CA 92106

www.rpgre.com



Bob Rodrigues
Broker-Owner
(619) 987-6768
bob@rpgre.com
01864725

3571 Pacific Hwy | FOR SALE OR LEASE. 16,461 sf concrete paved lot