

FOR SALE/LEASE

RETAIL BUILDING

9

AMATO DRIVE

Windham, ME 04062



PROPERTY SUMMARY

- + 12,000± sf retail building
- + Located on 6.2± acres just off Main Street.
- + 133± on-site, paved parking spaces
- + Currently used as fitness center but ideal for any retail use.
- + Sale Price: \$1,895,000
- + Lease Rate: \$12.95/sf NNN

CBRE | The Boulos Company

Part of the CBRE affiliate network

One Canal Plaza, Ste 500
Portland, ME 04101
207.772.1333
www.boulos.com

FOR SALE/LEASE RETAIL BUILDING



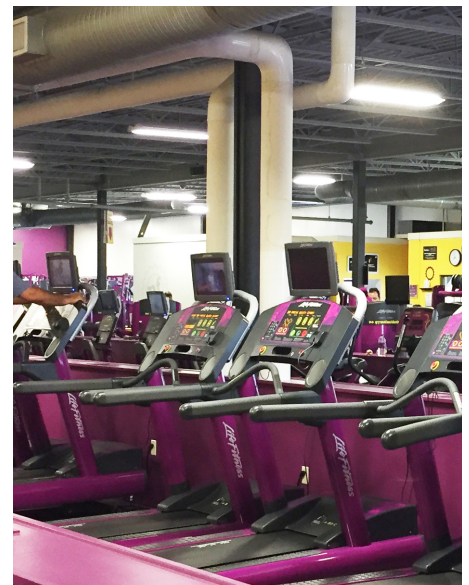
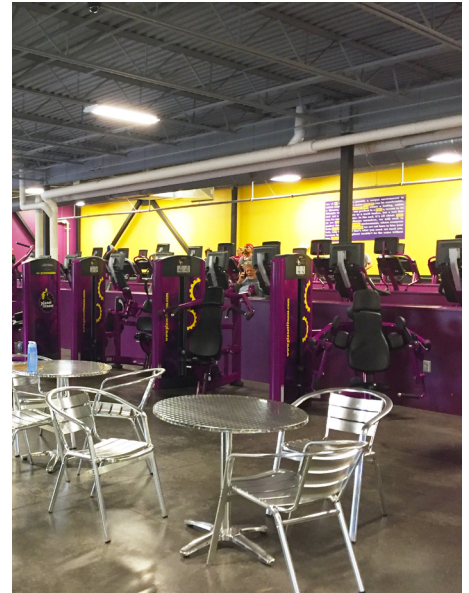
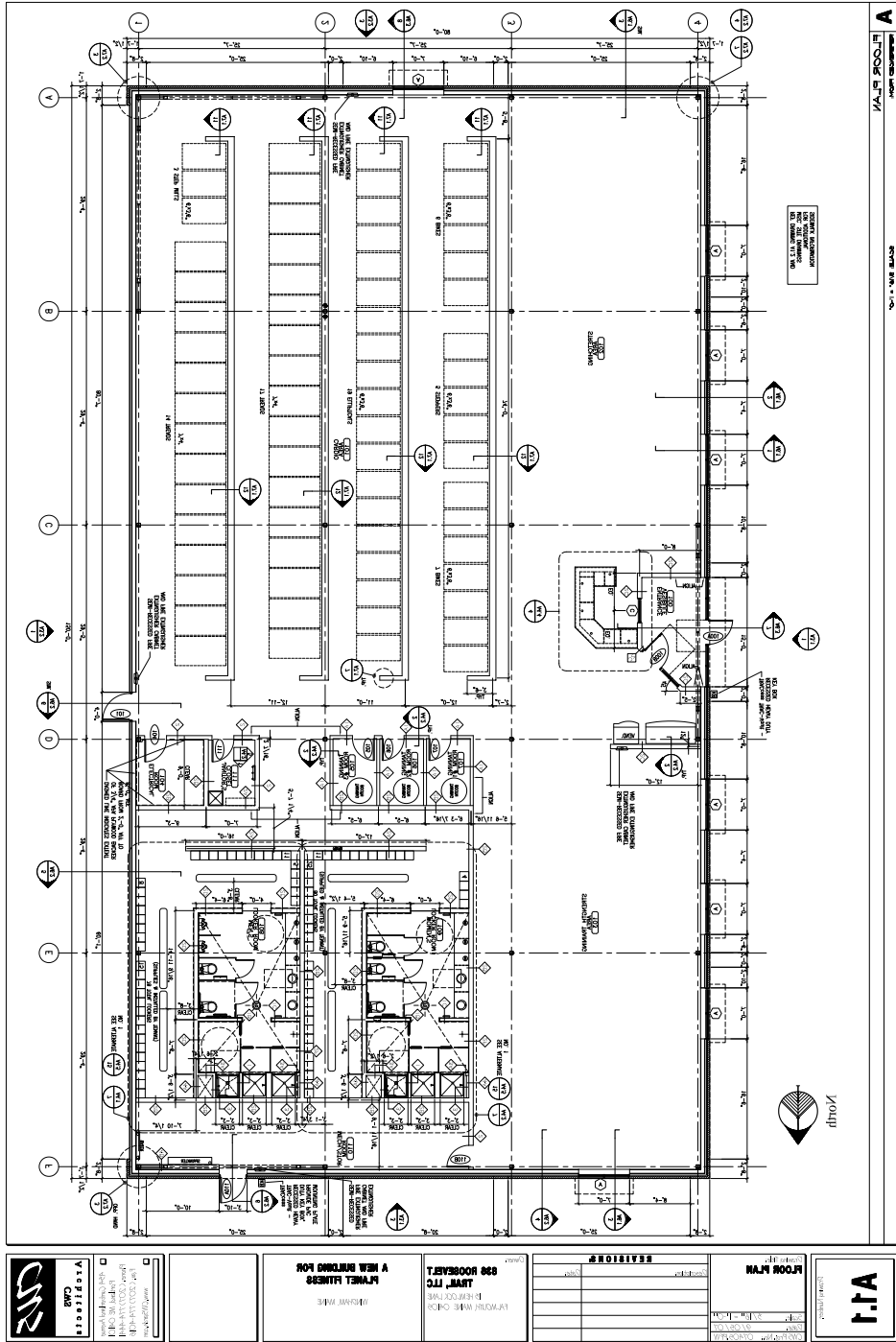
PROPERTY DETAILS

Owner of Record	Amato Drive, LLC
Building Size	12,000± SF
Year Built	2007
Land Area	6.2± Acres
Available Space	12,000± SF
Zoning	C-1 (Commercial 1)
Registry of Deeds	Book 26243, Page 41
Assessor's Reference	Map 71, Block 3, Lot 3
Assessed Value	Land: \$ 939,500 Bldg: \$ 956,100 Total: \$1,895,600
Real Estate Taxes	\$32,078 (FY 2017)
Construction	Steel frame; vinyl siding
HVAC	Four (4) rooftop mounted Trane HVAC units with a total of 35 tons HVAC, two Munchkin units for hot water, Central A/C
Sprinkler	Yes, wet system
Parking	133± on-site parking spaces
Lease Rate	\$12.95/sf NNN
NNN Expenses	\$0.94/sf for management, insurance, and storm water maintenance. Tenant pays for all other property expenses.
R.E. Taxes	\$2.67/sf
Sale Price	\$1,895,000





FLOOR PLAN



FOR SALE/LEASE RETAIL BUILDING

9

AMATO DRIVE
Windham, ME 04062



CONTACT US



DANIEL GREENSTEIN

Partner
207 772 1333 T
207 553 1703 D
dgreenstein@boulos.com



JONATHAN RIZZO

Associate
207 772 1333 T
207 553 1712 D
jrizzo@boulos.com

©2017 The Boulos Company, Inc. - We obtained the information above from sources we believe to be reliable. However, we have not verified its accuracy and make no guarantee, warranty or representation about it. It is submitted subject to the possibility of errors, omissions, change of price, rental or other conditions, prior sale, lease or financing, or withdrawal without notice. We include projections, opinions, assumptions or estimates for example only, and they may not represent current or future performance of the property. You and your tax and legal advisors should conduct your own investigation of the property and transaction. We represent the Seller/Landlord, and, as such, has a fiduciary duty to disclose to the Seller/Landlord information which is material to the Sale/Lease, acquired from the Buyer/Tenant or any other source, except in cases of disclosed dual agency. Photos herein are the property of their respective owners and use of these images without the express written consent of the owner is prohibited.

CBRE | The Boulos Company

Part of the CBRE affiliate network

One Canal Plaza, Ste 500
Portland, ME 04101
207.772.1333
www.boulos.com