

Mary Sheridan House, 11-19 St Thomas Street, SE1

Office Space to Let

1,028 sq. ft. to 15,006 sq. ft.



Location

The property is situated in the heart of London Bridge, immediately adjacent to London Bridge Station and The Shard. The property benefits from excellent transport links, with London Bridge Railway and Underground Stations located just a minutes' walk away.

Description

11-19 St Thomas Street is a part Grade II and Grade II* listed office building, which sits immediately next to the London Bridge Quarter. The total floor area is approx. 15,006 sq ft NIA, with the available accommodation arranged over lower ground, ground and three upper floors. The landlord will be willing to provide a capital contribution or undertake a Cat A refurbishment.

Transport Links

London Bridge
Borough
Monument



4 minutes
8 minutes
10 minutes

Specification

The accommodation benefits from the following amenities:

- Central Heating
- Solid Floors
- Cat2 Lighting
- Sash Windows with secondary glazing
- Dado Trunking
- Passenger Lift
- Car Parking

Available Accommodation

Floor	NIA (sq.ft)
3 rd	2,320
2 nd	2,920
1 st	3,411
Ground	5,327
Lower Ground	1,028
Total	15,006

Terms

Available by way of a new lease directly from the Landlord.

Rent: POA

Rates: TBC

Service Charge: TBC

Contact

For further information or to arrange a viewing, please contact:

Tracy Collins: 020 7866 8627

Tracy.collins@montagu-evans.co.uk

Katie Stewart: 020 7866 8692

Katie.stewart@montagu-evans.co.uk

Alex Kirk: 020 3962 6453

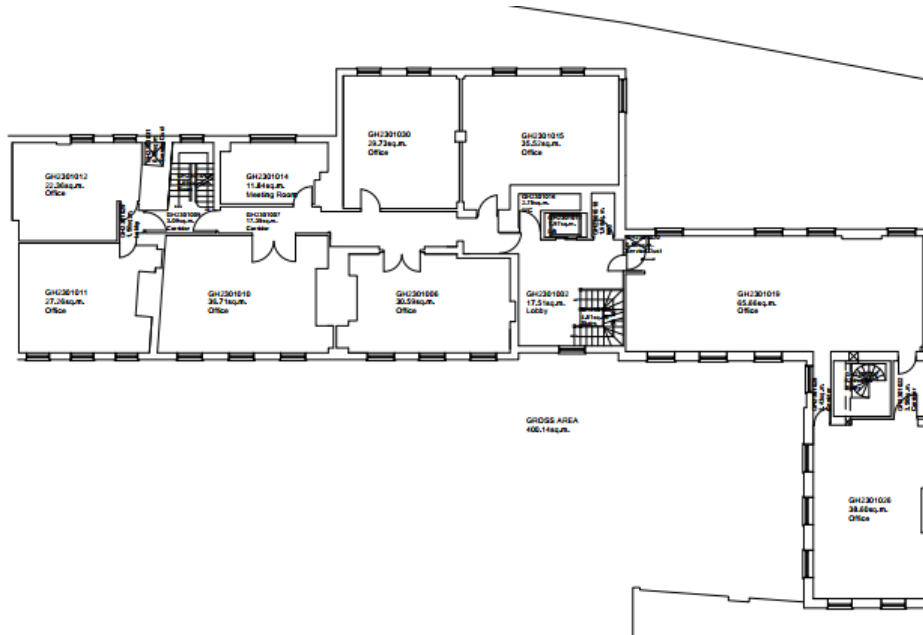
Alex.kirk@montagu-evans.co.uk

Or our Joint Agents:

Union Street Partners
020 3757 7777

Floor Plans

1st Floor



2nd Floor

