



FOR LEASE

REGIONAL
GROCERY/
THEATER
ANCHORED
SHOPPING
CENTER

CBRE | Hampton Roads
150 West Main Street
Suite 1100
Norfolk, VA 23510
T 757.490.3300
F 757.490.1200

www.cbre.com/norfolk

HARBOUR VIEW MARKETPLACE

HARBOUR TOWNE PARKWAY :: SUFFOLK, VIRGINIA 23435



FOR MORE INFORMATION:

:: Chris Read
Senior Vice President
1+ 757 228 1803
chris.read@cbre-norfolk.com
www.cbre.com/chris.read

:: Ned Brooks
Senior Vice President
1+ 757 228 1829
ned.brooks@cbre-norfolk.com
www.cbre.com/ned.brooks

CBRE | Hampton Roads

Retail 24/7.

FEATURES:

- :: Thriving retail hospital with future expansion plans.
- :: Strong mix of local, regional, and national retailers.
- :: Site boasts a 16-screen, 3,000 seat Regal Cinema movie theatre.
- :: Surrounding daytime employers include the Bon Secours Medical Center, Lockheed Martin’s Global Center for Innovation, Lakeview Technology Center, Bridgeway Technology Center I & II, Virginia Modeling Analysis and Simulation Center (VMASC) and more.

ADDRESS: 5860 Harbour View Boulevard, Suffolk, VA 23435 (Theater Building)
7836 Harbour Towne Parkway, Suffolk, VA 23435 (Harris Teeter Building)

AVAILABILITY: 7836 Harbour Towne Parkway

Suite 9: 1,400 SF - \$21.00 PSF
Suite 19: 1,500 SF - \$21.00 PSF

5860 Harbour View Boulevard

Suite A-2: 756 SF
Suite A6-8: *2,583 SF - \$19.00 PSF (partially fixtured restaurant)
Suite B3: 756 SF
Suite B4-8 3,770 SF

*Spaces can be combined to form 5,515 SF

OUTPARCELS: Parcel #1: 1.5 acres available for Lease - \$80,000 per acre
Parcel #2: .9 acres available for Lease - \$80,000 per acre

ANCHORS: Regal Cinema 16, Harris Teeter

ZONING: B-2, General Business District

INGRESS/EGRESS: Signalized Intersection at Harbour View Boulevard and Harbour Towne Parkway. Excellent visibility from I - 664.

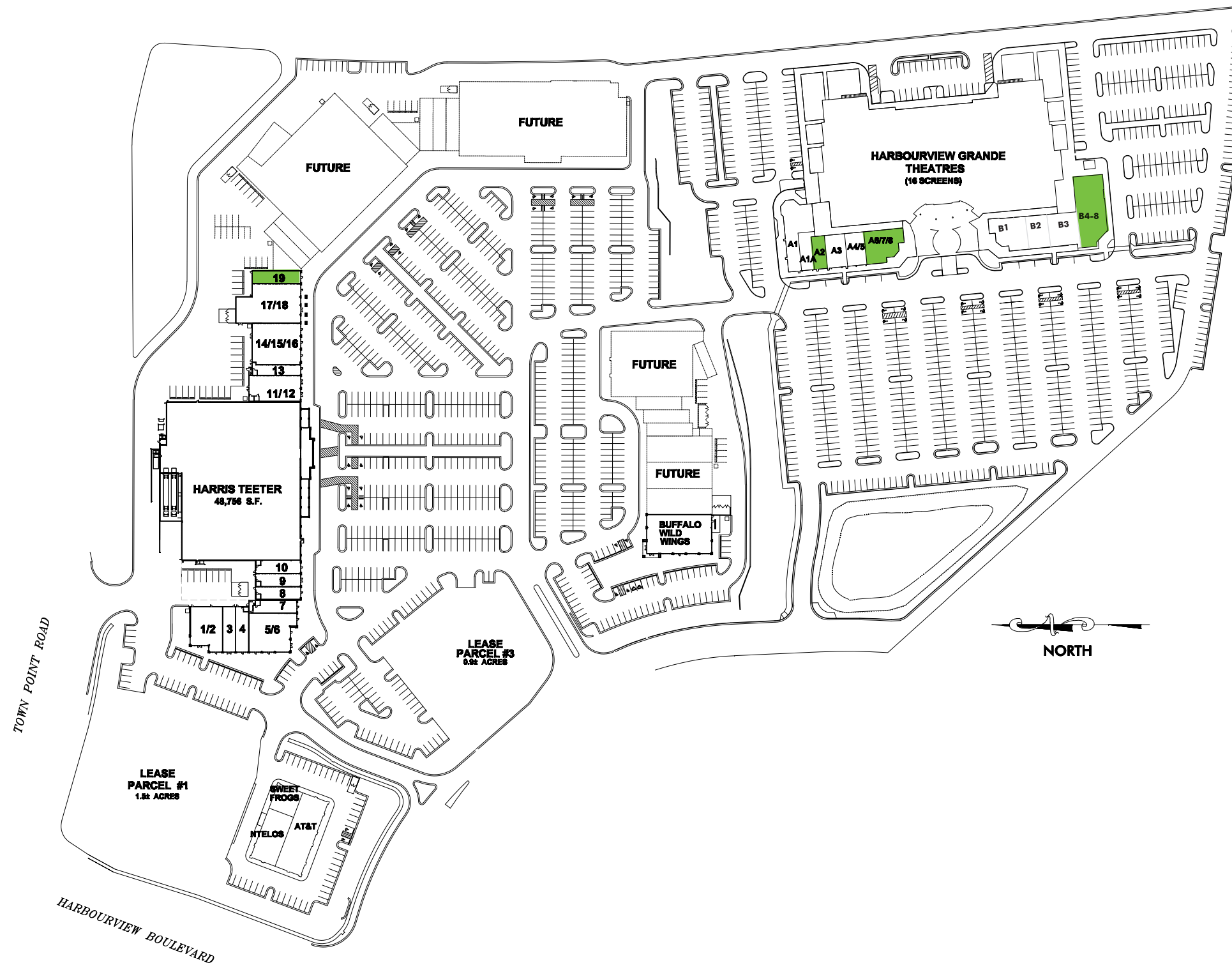
SURROUNDING RETAIL: Super Wal-Mart, Bed Bath & Beyond, Kohl’s, OfficeMax, Dicks, TJ Maxx, PetSmart, Applebee’s, Ruby Tuesday, Farm Fresh, Walgreens, 7-11, Bank of America, Food Lion, Chick-fil-A

| Demographics (2014) | 1-Mile | 3-Miles | 5-Miles | 7-Miles |
|--------------------------|-----------|----------|----------|----------|
| Population | 4,386 | 49,096 | 84,382 | 138,703 |
| Average Household Income | \$113,931 | \$82,269 | \$84,867 | \$77,014 |
| Daytime Population | 3,641 | 13,340 | 24,386 | 43,581 |





INTERSTATE ROUTE 664



| Suite | Tenant Name | Dim. | S.F. |
|-----------------------------------|-----------------------------|-----------|-------|
| 7386 Harbour Towne Parkway | | | |
| 1 | Anytime Fitness | 30'x60' | 3,200 |
| 2 | | 20'x70' | |
| 3 | Shotz Photography | 20'x70' | 1,400 |
| 4 | China Moon Restaurant | 20'x70' | 1,400 |
| 5 | La Parilla | 60'x64' | 3,556 |
| 6 | Mexican Restaurant | 20'x30' | 600 |
| 7 | Super Cuts | 20'x67.4' | 1,364 |
| 8 | Lee Spa Nails | 20'x70' | 1,400 |
| 9 | Available | 20'x70' | 1,400 |
| 10 | Velveteen Rabbit | 20'x70' | 1,400 |
| 11-12 | Massage Envy | 40'x80' | 3,200 |
| 13 | Albano | 16'x75' | 1,184 |
| 14-16 | Gianna's Italian Restaurant | 64'x75.4' | 4,772 |
| 17 | Ninja Steak/Sushi | 40'x100' | 5,500 |
| 18 | | 20'x75' | |
| 19 | Available | 20'x75' | 1,500 |

| Suite | Tenant Name | S.F. |
|-----------------------------------|-------------|-------|
| 7394 Harbour Towne Parkway | | |
| 41 | Sweet Frogs | 1,600 |
| 38 | AT&T | 5,000 |
| 39/40 | nTelos | 3,200 |

| Suite | Tenant Name | S.F. |
|------------------------------------|--------------------------|-------|
| 5860 Harbour View Boulevard | | |
| A1 | Rajput Indian Restaurant | 3,050 |
| A1a | Tropical Smoothie | 1,400 |
| A2 | Available | 756 |
| A3 | Pilates | 1,511 |

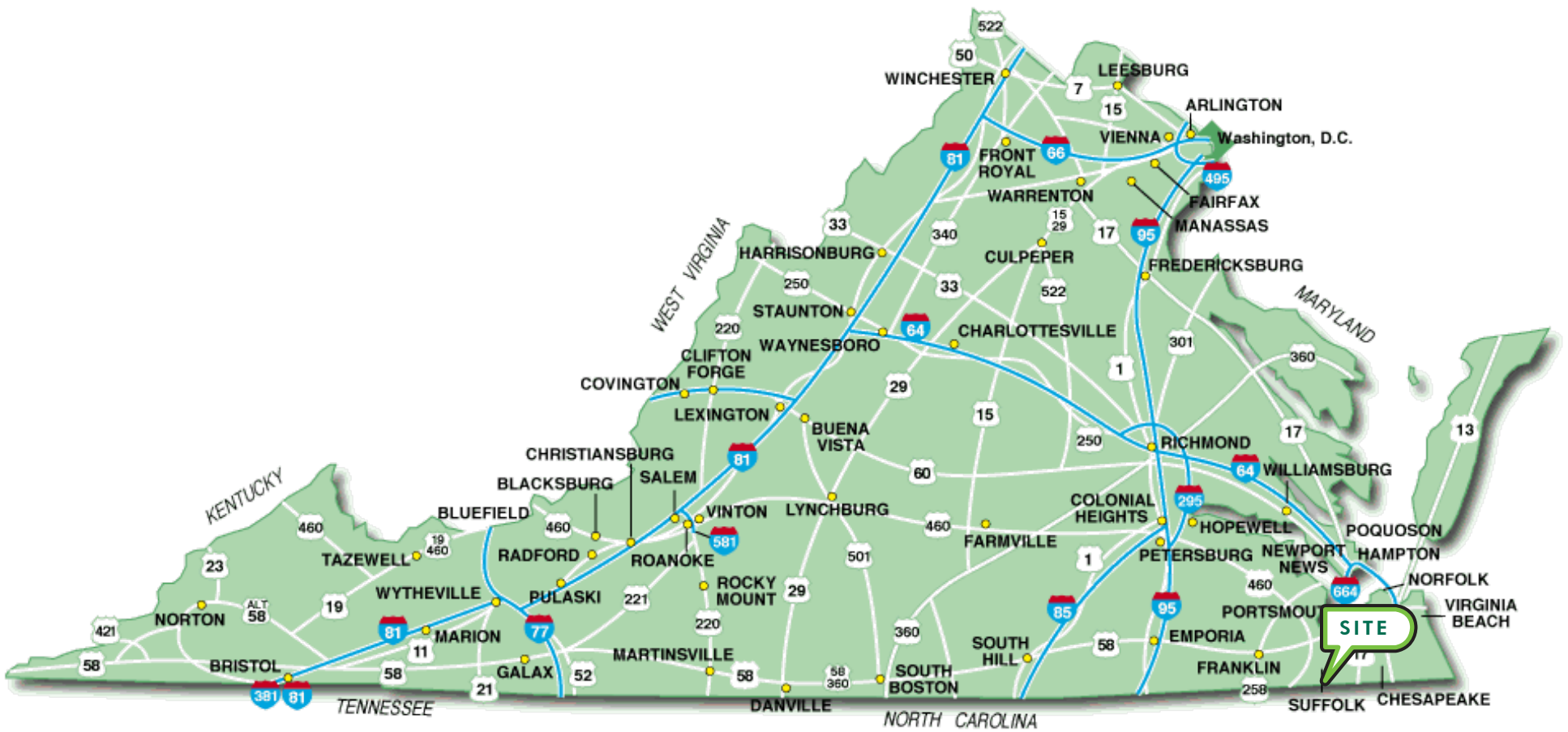
| Suite | Tenant Name | S.F. |
|------------------------------------|-------------------------------------|--------|
| 5860 Harbour View Boulevard | | |
| A1 | Rajput Indian Restaurant | 3,050 |
| A1a | Tropical Smoothie | 1,400 |
| A2 | Available | 756 |
| A3 | Pilates | 1,511 |
| A4-5 | Nail Salon | 1,421 |
| A6-8 | Available (former pizza restaurant) | 2,583 |
| B1-2 | Cold Stone Creamery | 1,823 |
| B3 | Cleaners | 756 |
| B4-8 | Available | 3,770 |
| B9 | Broken Egg | 4,346 |
| THR | Harbour View Grande 16 | 61,500 |

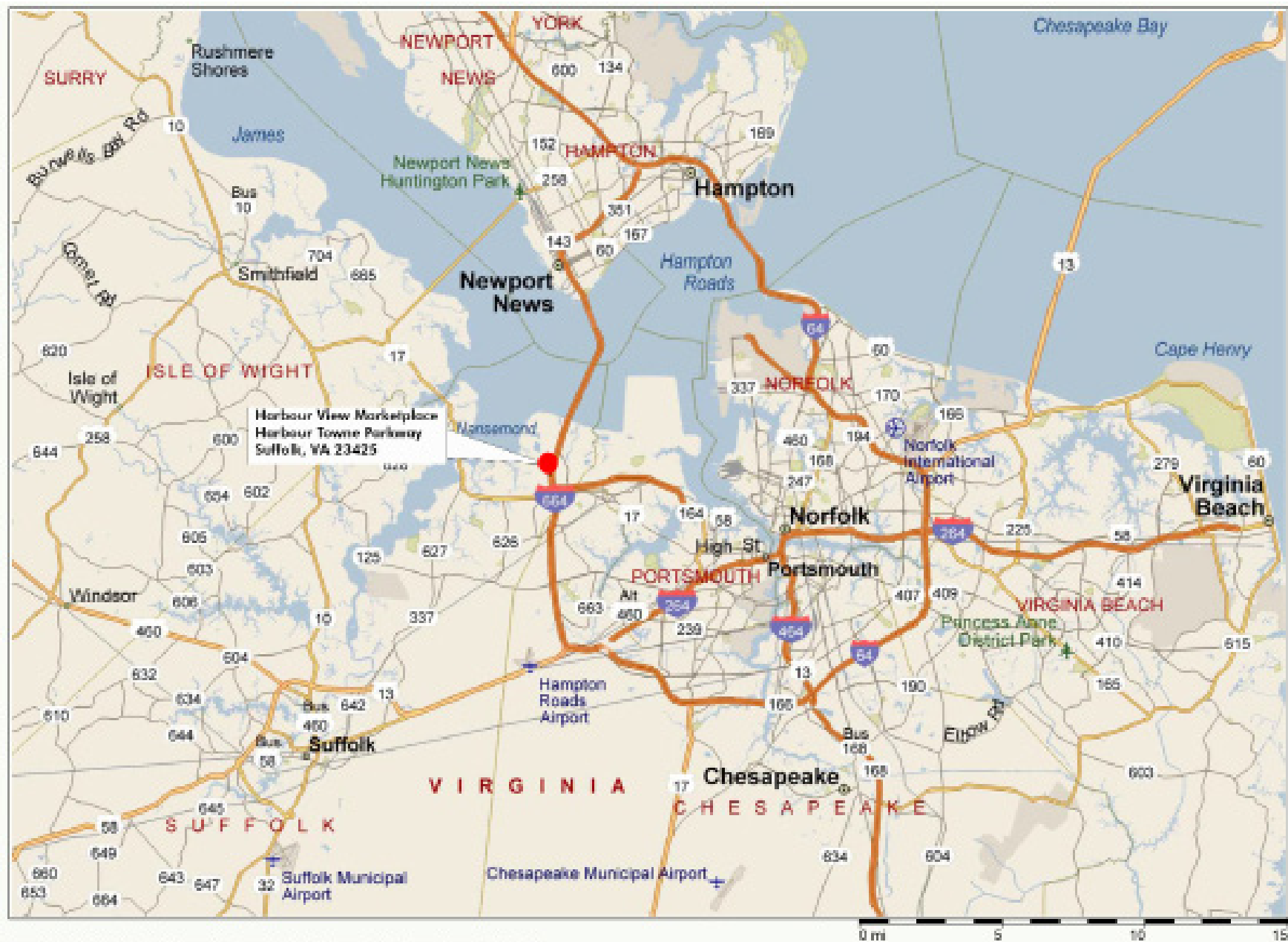




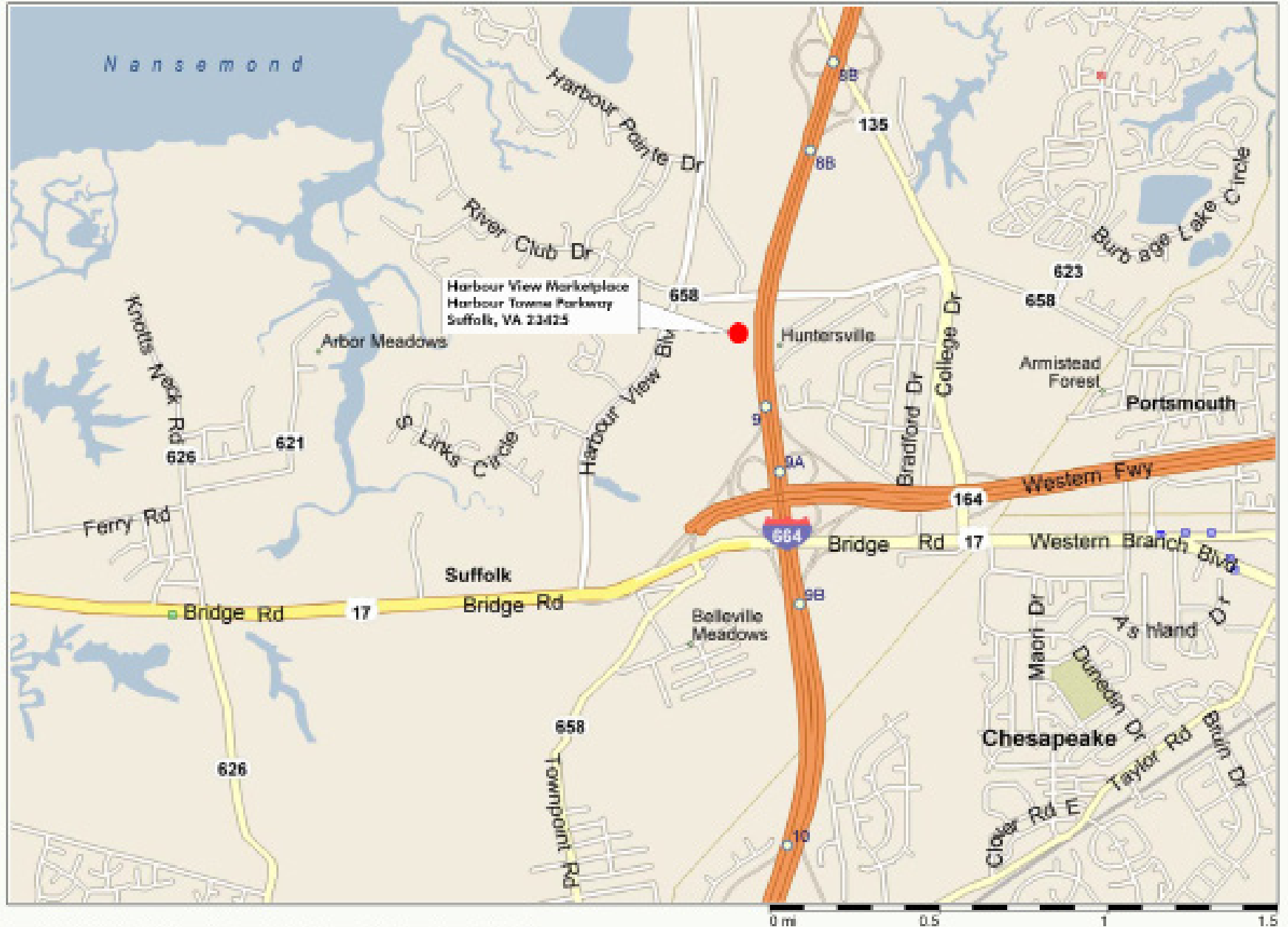








Copyright © 1998-2005 Microsoft Corp. and/or its suppliers. All rights reserved. <http://www.microsoft.com/strata>
 © 2004 NAVTEQ. All rights reserved. This data includes information taken with permission from Canadian authorities © Her Majesty the Queen in Right of Canada. © Copyright 2004 by TeleAtlas North America, Inc. All rights reserved.



Copyright © 1998-2005 Microsoft Corp. and/or its suppliers. All rights reserved. <http://www.microsoft.com/strata/>
 © 2004 NAVTEQ. All rights reserved. This data includes information taken with permission from Canadian authorities © Her Majesty the Queen in Right of Canada. © Copyright 2004 by TeleAtlas North America, Inc. All rights reserved.

| | 5860 Harbour View Blvd 1 mile radius | 5860 Harbour View Blvd 3 mile radius | 5860 Harbour View Blvd 5 mile radius | 5860 Harbour View Blvd 7 mile radius | |
|------------------------------------|---|---|---|---|-----------|
| POPULATION | 2014 Estimated Population | 4,386 | 49,096 | 84,382 | 138,703 |
| | 2019 Projected Population | 4,733 | 52,193 | 88,865 | 145,242 |
| | 2010 Census Population | 4,110 | 46,728 | 81,127 | 134,132 |
| | 2000 Census Population | 2,280 | 36,292 | 69,512 | 121,281 |
| | Growth 2010-2014 | 6.70% | 5.07% | 4.01% | 3.41% |
| | Growth 2014-2019 | 7.91% | 6.31% | 5.31% | 4.71% |
| | 2014 Estimated Median Age | 35.79 | 34.69 | 37.74 | 37.04 |
| | 2014 Estimated Average Age | 35.86 | 35.50 | 37.88 | 37.79 |
| HOUSEHOLDS | 2014 Estimated Households | 1,522 | 17,858 | 31,440 | 51,392 |
| | 2019 Projected Households | 1,618 | 18,951 | 33,097 | 53,835 |
| | 2010 Census Households | 1,455 | 17,042 | 30,258 | 49,726 |
| | 2000 Census Households | 747 | 12,901 | 24,805 | 44,309 |
| | Growth 2010-2014 | 4.60% | 4.79% | 3.91% | 3.35% |
| | Growth 2014-2019 | 6.29% | 6.12% | 5.27% | 4.75% |
| | 2014 Est. Average Household Size | 2.88 | 2.74 | 2.67 | 2.63 |
| | INCOME | 2014 Est. Median Household Income | \$83,713 | \$66,458 | \$69,311 |
| 2019 Prj. Median Household Income | | \$101,074 | \$74,596 | \$77,884 | \$68,142 |
| 2000 Cen. Median Household Income | | \$52,834 | \$47,549 | \$50,787 | \$43,726 |
| 2014 Est. Average Household Income | | \$113,931 | \$82,269 | \$84,867 | \$77,014 |
| 2014 Estimated Per Capita Income | | \$39,550 | \$29,925 | \$31,621 | \$28,535 |
| HOUSING | 2014 Estimated Housing Units | 1,618 | 18,717 | 32,911 | 54,430 |
| | 2014 Estimated Occupied Units | 1,522 | 17,858 | 31,440 | 51,392 |
| | 2014 Estimated Vacant Units | 95 | 859 | 1,471 | 3,038 |
| | 2014 Est. Owner Occupied Units | 1,010 | 12,243 | 23,815 | 36,556 |
| | 2014 Est. Renter Occupied Units | 513 | 5,616 | 7,625 | 14,836 |
| | 2014 Est. Median Housing Value | \$300,365 | \$247,631 | \$246,255 | \$229,108 |
| | 2014 Est. Average Housing Value | \$358,511 | \$273,701 | \$276,221 | \$262,444 |

| | 5860 Harbour View Blvd 1 mile radius | 5860 Harbour View Blvd 3 mile radius | 5860 Harbour View Blvd 5 mile radius | 5860 Harbour View Blvd 7 mile radius | |
|--------------------------------------|---|---|---|---|----------------|
| INCOME | 2014 Estimated Households | 1,522 | 17,858 | 31,440 | 51,392 |
| | - Income Less than \$15,000 | 108 (7.1%) | 1,116 (6.2%) | 1,915 (6.1%) | 4,672 (9.1%) |
| | - Income \$15,000 - \$24,999 | 117 (7.7%) | 1,493 (8.4%) | 2,422 (7.7%) | 4,669 (9.1%) |
| | - Income \$25,000 - \$34,999 | 71 (4.7%) | 1,381 (7.7%) | 2,296 (7.3%) | 4,124 (8.0%) |
| | - Income \$35,000 - \$49,999 | 122 (8.0%) | 2,580 (14.4%) | 4,294 (13.7%) | 7,578 (14.7%) |
| | - Income \$50,000 - \$74,999 | 259 (17.0%) | 3,452 (19.3%) | 6,087 (19.4%) | 9,777 (19.0%) |
| | - Income \$75,000 - \$99,999 | 228 (15.0%) | 2,838 (15.9%) | 5,183 (16.5%) | 7,638 (14.9%) |
| | - Income \$100,000 - \$124,999 | 148 (9.7%) | 1,983 (11.1%) | 3,586 (11.4%) | 4,971 (9.7%) |
| | - Income \$125,000 - \$149,999 | 117 (7.7%) | 1,199 (6.7%) | 2,190 (7.0%) | 3,171 (6.2%) |
| | - Income \$150,000 - \$199,999 | 141 (9.3%) | 998 (5.6%) | 1,882 (6.0%) | 2,686 (5.2%) |
| | - Income \$200,000 - \$249,999 | 77 (5.1%) | 361 (2.0%) | 705 (2.2%) | 957 (1.9%) |
| | - Income \$250,000 - \$499,999 | 97 (6.4%) | 352 (2.0%) | 686 (2.2%) | 906 (1.8%) |
| | - Income Over \$500,000 | 39 (2.6%) | 106 (.6%) | 194 (.6%) | 242 (.5%) |
| 2014 Est. Average Household Income | \$113,931 | \$82,269 | \$84,867 | \$77,014 | |
| 2019 Prj. Average Household Income | \$135,930 | \$93,570 | \$96,779 | \$86,748 | |
| 2000 Cen. Avg. Household Income | \$61,690 | \$54,462 | \$58,892 | \$53,946 | |
| HOUSEHOLD SIZE | 2014 Estimated Households | 1,522 | 17,858 | 31,440 | 51,392 |
| | - 1 Person Household | 258 (17.0%) | 3,726 (20.9%) | 6,683 (21.3%) | 11,874 (23.1%) |
| | - 2 Person Household | 493 (32.4%) | 5,506 (30.8%) | 10,501 (33.4%) | 16,856 (32.8%) |
| | - 3 Person Household | 309 (20.3%) | 3,598 (20.1%) | 6,072 (19.3%) | 9,812 (19.1%) |
| | - 4 Person Household | 242 (15.9%) | 2,895 (16.2%) | 4,818 (15.3%) | 7,441 (14.5%) |
| | - 5 Person Household | 131 (8.6%) | 1,357 (7.6%) | 2,146 (6.8%) | 3,401 (6.6%) |
| | - 6 Person Household | 60 (3.9%) | 531 (3.0%) | 840 (2.7%) | 1,334 (2.6%) |
| | - 7 or More Person Household | 30 (2.0%) | 246 (1.4%) | 380 (1.2%) | 674 (1.3%) |
| 2014 Est. Average Household Size | 2.88 | 2.74 | 2.67 | 2.63 | |
| VEHICLES | 2014 Estimated Households | 1,522 | 17,858 | 31,440 | 51,392 |
| | - Households with No Vehicles | 66 (4.3%) | 623 (3.5%) | 991 (3.2%) | 2,834 (5.5%) |
| | - Households with 1 Vehicle | 549 (36.1%) | 5,544 (31.0%) | 8,963 (28.5%) | 15,626 (30.4%) |
| | - Households with 2 Vehicles | 620 (40.7%) | 7,028 (39.4%) | 12,929 (41.1%) | 19,800 (38.5%) |
| | - Households with 3 Vehicles | 205 (13.5%) | 3,289 (18.4%) | 5,817 (18.5%) | 8,767 (17.1%) |
| | - Households with 4 Vehicles | 59 (3.9%) | 974 (5.5%) | 1,969 (6.3%) | 3,146 (6.1%) |
| | - Households with 5+ Vehicles | 24 (1.6%) | 400 (2.2%) | 771 (2.5%) | 1,219 (2.4%) |
| 2014 Est. Average Number of Vehicles | 1.79 | 2.00 | 2.06 | 1.97 | |

HARBOUR VIEW STATION WEST :: DEMOGRAPHICS

| | 5860 Harbour view Blvd 1 mile radius | 5860 Harbour view Blvd 3 mile radius | 5860 Harbour view Blvd 5 mile radius | 5860 Harbour view Blvd 7 mile radius | |
|-----------------------------|--|---|---|---|----------------|
| RACE & ETHNICITY | 2014 Estimated Population by Race and Origin | 4,386 | 49,096 | 84,382 | 138,703 |
| | - White Population | 1,569 (35.8%) | 22,719 (46.3%) | 49,182 (58.3%) | 75,177 (54.2%) |
| | - Black Population | 2,346 (53.5%) | 21,974 (44.8%) | 28,593 (33.9%) | 53,347 (38.5%) |
| | - Asian Population | 186 (4.2%) | 1,629 (3.3%) | 2,489 (2.9%) | 3,432 (2.5%) |
| | - Pacific Islander Population | 5 (.1%) | 62 (.1%) | 86 (.1%) | 149 (.1%) |
| | - American Indian and Alaska Native | 12 (.3%) | 159 (.3%) | 275 (.3%) | 494 (.4%) |
| | - Other Race Population | 108 (2.5%) | 630 (1.3%) | 857 (1.0%) | 1,639 (1.2%) |
| | - Two or More Races Population | 159 (3.6%) | 1,922 (3.9%) | 2,899 (3.4%) | 4,464 (3.2%) |
| | - Hispanic Population | 270 (6.2%) | 2,527 (5.1%) | 3,696 (4.4%) | 5,852 (4.2%) |
| | - White Non-Hispanic Population | 1,481 (33.8%) | 21,588 (44.0%) | 47,423 (56.2%) | 72,588 (52.3%) |
| AGE | 2014 Estimated Population by Age | 4,386 | 49,096 | 84,382 | 138,703 |
| | - Aged 0 to 4 Years | 311 (7.1%) | 3,587 (7.3%) | 5,598 (6.6%) | 9,308 (6.7%) |
| | - Aged 5 to 9 Years | 350 (8.0%) | 3,673 (7.5%) | 5,738 (6.8%) | 9,438 (6.8%) |
| | - Aged 10 to 14 Years | 366 (8.3%) | 3,790 (7.7%) | 6,033 (7.1%) | 9,493 (6.8%) |
| | - Aged 15 to 17 Years | 194 (4.4%) | 2,231 (4.5%) | 3,629 (4.3%) | 5,745 (4.1%) |
| | - Aged 18 to 20 Years | 172 (3.9%) | 2,028 (4.1%) | 3,349 (4.0%) | 6,094 (4.4%) |
| | - Aged 21 to 24 Years | 207 (4.7%) | 2,723 (5.5%) | 4,443 (5.3%) | 7,785 (5.6%) |
| | - Aged 25 to 34 Years | 547 (12.5%) | 6,729 (13.7%) | 10,428 (12.4%) | 17,935 (12.9%) |
| | - Aged 35 to 44 Years | 601 (13.7%) | 6,991 (14.2%) | 11,175 (13.2%) | 17,582 (12.7%) |
| | - Aged 45 to 54 Years | 614 (14.0%) | 7,027 (14.3%) | 12,343 (14.6%) | 19,701 (14.2%) |
| | - Aged 55 to 64 Years | 609 (13.9%) | 5,513 (11.2%) | 10,773 (12.8%) | 17,505 (12.6%) |
| | - Aged 65 to 74 Years | 302 (6.9%) | 3,045 (6.2%) | 6,554 (7.8%) | 10,695 (7.7%) |
| | - Aged 75 to 84 Years | 88 (2.0%) | 1,282 (2.6%) | 3,053 (3.6%) | 5,172 (3.7%) |
| | - Aged 85 Years and Older | 26 (.6%) | 476 (1.0%) | 1,266 (1.5%) | 2,248 (1.6%) |
| | 2014 Estimated Median Age | 35.79 | 34.69 | 37.74 | 37.04 |
| | 2014 Estimated Average Age | 35.86 | 35.50 | 37.88 | 37.79 |
| EDUCATION | 2014 Estimated Population Over 25 by Educational Attainment | 2,786 | 31,064 | 55,593 | 90,839 |
| | - Less than 9th Grade | 35 (1.3%) | 754 (2.4%) | 1,268 (2.3%) | 2,977 (3.3%) |
| | - High School - No Diploma | 174 (6.2%) | 2,127 (6.8%) | 3,908 (7.0%) | 8,464 (9.3%) |
| | - High School Diploma | 761 (27.3%) | 7,627 (24.6%) | 13,833 (24.9%) | 23,847 (26.3%) |
| | - Some College | 505 (18.1%) | 8,430 (27.1%) | 14,861 (26.7%) | 23,552 (25.9%) |
| | - Associate Degree | 172 (6.2%) | 2,708 (8.7%) | 4,749 (8.5%) | 7,494 (8.2%) |
| | - Bachelor's Degree | 673 (24.2%) | 5,536 (17.8%) | 10,371 (18.7%) | 15,099 (16.6%) |
| | - Master's Degree | 376 (13.5%) | 3,190 (10.3%) | 5,343 (9.6%) | 7,684 (8.5%) |
| | - Professional Degree | 59 (2.1%) | 408 (1.3%) | 839 (1.5%) | 1,178 (1.3%) |
| | - Doctoral Degree | 32 (1.1%) | 286 (.9%) | 421 (.8%) | 543 (.6%) |

HARBOUR VIEW STATION WEST :: DEMOGRAPHICS

| | 5860 Harbour View Blvd 1 mile radius | 5860 Harbour View Blvd 3 mile radius | 5860 Harbour View Blvd 5 mile radius | 5860 Harbour View Blvd 7 mile radius | |
|---------------------------------------|---|---|---|---|----------------|
| HOUSING VALUE | 2014 Estimated Owner Occupied Units by Housing Value | 1,010 | 12,243 | 23,815 | 36,556 |
| | - Valued Less than \$20,000 | 37 (3.7%) | 162 (1.3%) | 306 (1.3%) | 539 (1.5%) |
| | - Valued \$20,000 - \$39,999 | 23 (2.3%) | 200 (1.6%) | 327 (1.4%) | 442 (1.2%) |
| | - Valued \$40,000 - \$59,999 | 6 (.6%) | 64 (.5%) | 107 (.4%) | 212 (.6%) |
| | - Valued \$60,000 - \$79,999 | 16 (1.6%) | 94 (.8%) | 162 (.7%) | 347 (.9%) |
| | - Valued \$80,000 - \$99,999 | 38 (3.8%) | 214 (1.7%) | 290 (1.2%) | 673 (1.8%) |
| | - Valued \$100,000 - \$149,999 | 68 (6.7%) | 1,082 (8.8%) | 2,059 (8.6%) | 4,597 (12.6%) |
| | - Valued \$150,000 - \$199,999 | 122 (12.1%) | 2,198 (18.0%) | 4,475 (18.8%) | 7,542 (20.6%) |
| | - Valued \$200,000 - \$299,999 | 194 (19.2%) | 4,199 (34.3%) | 8,478 (35.6%) | 11,800 (32.3%) |
| | - Valued \$300,000 - \$399,999 | 177 (17.5%) | 2,750 (22.5%) | 4,898 (20.6%) | 6,454 (17.7%) |
| | - Valued \$400,000 - \$499,999 | 125 (12.4%) | 665 (5.4%) | 1,344 (5.6%) | 1,907 (5.2%) |
| | - Valued \$500,000 - \$749,999 | 139 (13.8%) | 422 (3.4%) | 973 (4.1%) | 1,533 (4.2%) |
| | - Valued \$750,000 - \$999,999 | 31 (3.1%) | 91 (.7%) | 220 (.9%) | 283 (.8%) |
| | - Valued More than \$1,000,000 | 33 (3.3%) | 101 (.8%) | 177 (.7%) | 227 (.6%) |
| 2014 Est. Median Housing Value | \$300,365 | \$247,631 | \$246,255 | \$229,108 | |
| 2014 Est. Average Housing Value | \$358,511 | \$273,701 | \$276,221 | \$262,444 | |
| HOUSING TYPE | 2014 Estimated Housing Units by Housing Type | 1,618 | 18,717 | 32,911 | 54,430 |
| | - 1 Unit Detached | 723 (44.7%) | 10,974 (58.6%) | 22,324 (67.8%) | 37,657 (69.2%) |
| | - 1 Unit Attached | 432 (26.7%) | 2,862 (15.3%) | 4,427 (13.5%) | 5,456 (10.0%) |
| | - 2 Units | 365 (22.6%) | 394 (2.1%) | 423 (1.3%) | 1,209 (2.2%) |
| | - 3-4 Units | 17 (1.1%) | 662 (3.5%) | 982 (3.0%) | 1,666 (3.1%) |
| | - 5-19 Units | 79 (4.9%) | 2,903 (15.5%) | 3,620 (11.0%) | 6,551 (12.0%) |
| | - 20-49 Units | 2 (.1%) | 320 (1.7%) | 388 (1.2%) | 829 (1.5%) |
| | - 50+ Units | 0 | 410 (2.2%) | 480 (1.5%) | 715 (1.3%) |
| | - Mobile Home Units | 0 | 192 (1.0%) | 267 (.8%) | 341 (.6%) |
| - Other Units | 0 | 0 | 0 | 6 (.0%) | |
| UNIT BUILT | 2014 Estimated Housing Units by Year Structure Built | 1,618 | 18,717 | 32,911 | 54,430 |
| | - Structure Built 2005 or Later | 378 (23.4%) | 2,073 (11.1%) | 2,660 (8.1%) | 3,912 (7.2%) |
| | - Structure Built 2000 to 2004 | 567 (35.0%) | 3,114 (16.6%) | 4,417 (13.4%) | 5,792 (10.6%) |
| | - Structure Built 1990 to 1999 | 267 (16.5%) | 4,303 (23.0%) | 6,628 (20.1%) | 8,200 (15.1%) |
| | - Structure Built 1980 to 1989 | 96 (5.9%) | 2,738 (14.6%) | 4,732 (14.4%) | 6,440 (11.8%) |
| | - Structure Built 1970 to 1979 | 195 (12.1%) | 3,720 (19.9%) | 6,382 (19.4%) | 9,358 (17.2%) |
| | - Structure Built 1960 to 1969 | 51 (3.2%) | 1,705 (9.1%) | 4,266 (13.0%) | 7,953 (14.6%) |
| | - Structure Built 1950 to 1959 | 21 (1.3%) | 569 (3.0%) | 2,566 (7.8%) | 6,225 (11.4%) |
| | - Structure Built 1940 to 1949 | 18 (1.1%) | 275 (1.5%) | 811 (2.5%) | 3,691 (6.8%) |
| | - Structure Built 1939 or Earlier | 24 (1.5%) | 220 (1.2%) | 450 (1.4%) | 2,859 (5.3%) |
| 2014 Est. Median Year Structure Built | 2001 | 1990 | 1984 | 1977 | |

HARBOUR VIEW STATION WEST :: DEMOGRAPHICS

| | 5860 Harbour View Blvd 1 mile radius | 5860 Harbour View Blvd 3 mile radius | 5860 Harbour View Blvd 5 mile radius | 5860 Harbour View Blvd 7 mile radius | |
|-----------------------|--|---|---|---|----------------|
| SEX | 2014 Estimated Population by Sex | 4,386 | 49,096 | 84,382 | 138,703 |
| | - Male | 2,094 (47.7%) | 23,239 (47.3%) | 40,355 (47.8%) | 66,639 (48.0%) |
| | - Female | 2,291 (52.2%) | 25,857 (52.7%) | 44,027 (52.2%) | 72,064 (52.0%) |
| MARITAL STATUS | 2014 Estimated Pop. over 15 by Marital Status | 3,359 | 38,046 | 67,013 | 110,464 |
| | - Male: Never Married | 409 (12.2%) | 5,818 (15.3%) | 9,530 (14.2%) | 17,055 (15.4%) |
| | - Male: Married Spouse Absent | 75 (2.2%) | 732 (1.9%) | 1,365 (2.0%) | 2,669 (2.4%) |
| | - Male: Married Spouse Present | 805 (24.0%) | 9,031 (23.7%) | 16,807 (25.1%) | 25,974 (23.5%) |
| | - Male: Widowed | 22 (.7%) | 440 (1.2%) | 795 (1.2%) | 1,424 (1.3%) |
| | - Male: Divorced | 273 (8.1%) | 1,679 (4.4%) | 3,112 (4.6%) | 5,216 (4.7%) |
| | - Female: Never Married | 543 (16.2%) | 6,240 (16.4%) | 9,661 (14.4%) | 16,936 (15.3%) |
| | - Female: Married Spouse Absent | 81 (2.4%) | 1,169 (3.1%) | 1,675 (2.5%) | 2,872 (2.6%) |
| | - Female: Married Spouse Present | 786 (23.4%) | 8,979 (23.6%) | 16,799 (25.1%) | 25,776 (23.3%) |
| | - Female: Widowed | 205 (6.1%) | 1,624 (4.3%) | 3,239 (4.8%) | 5,876 (5.3%) |
| | - Female: Divorced | 159 (4.7%) | 2,334 (6.1%) | 4,030 (6.0%) | 6,666 (6.0%) |
| GQ | 2014 Estimated Population in Group Quarters | 1 | 87 | 519 | 3,185 |
| | - Institutional Group Quarters | 1 (100%) | 64 (73.6%) | 133 (25.6%) | 1,708 (53.6%) |
| | - Non-Institutional Group Quarters | 0 | 24 (27.6%) | 386 (74.4%) | 1,476 (46.3%) |
| MOVED IN | 2014 Estimated Occupied Housing Units by Year Occ. Moved In | 1,522 | 17,858 | 31,440 | 51,392 |
| | - Moved In 2005 or Later | 836 (54.9%) | 9,073 (50.8%) | 13,700 (43.6%) | 23,042 (44.8%) |
| | - Moved In 2000-2004 | 466 (30.6%) | 3,756 (21.0%) | 6,426 (20.4%) | 9,540 (18.6%) |
| | - Moved In 1990-1999 | 135 (8.9%) | 2,744 (15.4%) | 5,426 (17.3%) | 8,459 (16.5%) |
| | - Moved In 1980-1989 | 53 (3.5%) | 1,099 (6.2%) | 2,705 (8.6%) | 4,164 (8.1%) |
| | - Moved In 1970-1979 | 5 (.3%) | 750 (4.2%) | 1,834 (5.8%) | 3,190 (6.2%) |
| | - Moved In 1969 or Earlier | 27 (1.8%) | 436 (2.4%) | 1,348 (4.3%) | 2,996 (5.8%) |

HARBOUR VIEW STATION WEST :: DEMOGRAPHICS

| | 5860 Harbour View Blvd 1 mile radius | 5860 Harbour View Blvd 3 mile radius | 5860 Harbour View Blvd 5 mile radius | 5860 Harbour View Blvd 7 mile radius | |
|-------------------------|---|---|---|---|----------------|
| OCCUPATION | 2014 Estimated Employed Population by Occupation | 1,970 | 22,820 | 39,158 | 64,078 |
| | - Architect/Engineer | 44 (2.2%) | 663 (2.9%) | 1,218 (3.1%) | 1,761 (2.7%) |
| | - Arts/Entertain/Sports | 16 (.8%) | 172 (.8%) | 351 (.9%) | 604 (.9%) |
| | - Building Grounds Maint | 127 (6.4%) | 679 (3.0%) | 1,056 (2.7%) | 2,144 (3.3%) |
| | - Business/Financial Ops | 121 (6.1%) | 1,357 (5.9%) | 2,255 (5.8%) | 3,091 (4.8%) |
| | - Community/Soc Svcs | 86 (4.4%) | 668 (2.9%) | 1,099 (2.8%) | 1,667 (2.6%) |
| | - Computer/Mathematical | 110 (5.6%) | 1,085 (4.8%) | 1,873 (4.8%) | 2,532 (4.0%) |
| | - Construction/Extraction | 39 (2.0%) | 1,049 (4.6%) | 1,953 (5.0%) | 3,833 (6.0%) |
| | - Edu/Training/Library | 85 (4.3%) | 1,327 (5.8%) | 2,324 (5.9%) | 3,778 (5.9%) |
| | - Farm/Fish/Forestry | 43 (2.2%) | 142 (.6%) | 191 (.5%) | 323 (.5%) |
| | - Food Prep/Serving | 69 (3.5%) | 1,036 (4.5%) | 1,847 (4.7%) | 3,740 (5.8%) |
| | - Health Practitioner/Tec | 131 (6.6%) | 1,649 (7.2%) | 2,681 (6.8%) | 3,800 (5.9%) |
| | - Healthcare Support | 56 (2.8%) | 514 (2.3%) | 843 (2.2%) | 1,351 (2.1%) |
| | - Legal | 15 (.8%) | 147 (.6%) | 296 (.8%) | 483 (.8%) |
| | - Life/Phys/Soc Science | 20 (1.0%) | 159 (.7%) | 302 (.8%) | 482 (.8%) |
| | - Maintenance Repair | 26 (1.3%) | 695 (3.0%) | 1,151 (2.9%) | 2,050 (3.2%) |
| | - Management | 256 (13.0%) | 2,268 (9.9%) | 4,209 (10.7%) | 6,431 (10.0%) |
| | - Office/Admin Support | 249 (12.6%) | 3,169 (13.9%) | 5,284 (13.5%) | 8,824 (13.8%) |
| | - Personal Care/Svc | 58 (2.9%) | 753 (3.3%) | 1,162 (3.0%) | 1,901 (3.0%) |
| | - Production | 75 (3.8%) | 929 (4.1%) | 1,491 (3.8%) | 2,913 (4.5%) |
| - Protective Svcs | 66 (3.4%) | 760 (3.3%) | 1,356 (3.5%) | 2,085 (3.3%) | |
| - Sales/Related | 196 (9.9%) | 2,405 (10.5%) | 4,270 (10.9%) | 6,861 (10.7%) | |
| - Transportation/Moving | 83 (4.2%) | 1,196 (5.2%) | 1,949 (5.0%) | 3,426 (5.3%) | |
| TRANSPORTATION | 2014 Estimated Employed Population Over 16 by Primary Transportation to Work | 2,158 | 24,506 | 42,561 | 67,412 |
| | - Bicycle | 10 (.5%) | 27 (.1%) | 29 (.1%) | 125 (.2%) |
| | - Carpooled | 145 (6.7%) | 1,819 (7.4%) | 2,656 (6.2%) | 4,871 (7.2%) |
| | - Drove Alone | 1,886 (87.4%) | 21,175 (86.4%) | 36,461 (85.7%) | 56,722 (84.1%) |
| | - Other | 9 (.4%) | 222 (.9%) | 437 (1.0%) | 646 (1.0%) |
| | - Public Transport | 0 | 98 (.4%) | 209 (.5%) | 636 (.9%) |
| | - Walked | 33 (1.5%) | 386 (1.6%) | 683 (1.6%) | 1,328 (2.0%) |
| | - Worked at Home | 75 (3.5%) | 779 (3.2%) | 2,087 (4.9%) | 3,084 (4.6%) |
| TRAVEL TIME | 2014 Estimated Employed Population Over 16 by Travel Time to Work | 2,132 | 24,735 | 42,398 | 67,517 |
| | - Travel Time Less than 15 Min | 309 (14.5%) | 4,860 (19.6%) | 8,618 (20.3%) | 14,215 (21.1%) |
| | - Travel Time 15-29 Min | 789 (37.0%) | 9,846 (39.8%) | 16,568 (39.1%) | 26,988 (40.0%) |
| | - Travel Time 30-44 Min | 580 (27.2%) | 5,709 (23.1%) | 9,457 (22.3%) | 14,950 (22.1%) |
| | - Travel Time 45-59 Min | 299 (14.0%) | 2,320 (9.4%) | 3,535 (8.3%) | 5,008 (7.4%) |
| | - Travel Time 60+ Min | 80 (3.8%) | 1,222 (4.9%) | 2,135 (5.0%) | 3,271 (4.8%) |
| | - 2014 Est. Average Travel Time | 30 | 28 | 28 | 27 |

HARBOUR VIEW STATION WEST :: DEMOGRAPHICS

| | 5860 Harbour View Blvd 1 mile radius | 5860 Harbour View Blvd 3 mile radius | 5860 Harbour View Blvd 5 mile radius | 5860 Harbour View Blvd 7 mile radius | |
|-------------------------|--|---|---|---|----------------|
| EMPLOYMENT | Estimated Population Over 16 Years Old by Employment Status | 3,296 | 37,309 | 65,816 | 108,573 |
| | - Civilian Males | 966 (29.3%) | 10,731 (28.8%) | 18,669 (28.4%) | 30,318 (27.9%) |
| | - Civilian Females | 1,008 (30.6%) | 11,641 (31.2%) | 19,859 (30.2%) | 32,325 (29.8%) |
| | - Armed Forces Male | 177 (5.4%) | 1,598 (4.3%) | 2,993 (4.5%) | 3,517 (3.2%) |
| | - Armed Forces Female | 21 (.6%) | 276 (.7%) | 419 (.6%) | 554 (.5%) |
| | - Unemployed Males | 91 (2.8%) | 1,049 (2.8%) | 1,639 (2.5%) | 2,969 (2.7%) |
| | - Unemployed Females | 138 (4.2%) | 1,585 (4.2%) | 2,226 (3.4%) | 3,604 (3.3%) |
| | - Not in the Labor Force Male | 319 (9.7%) | 3,940 (10.6%) | 7,692 (11.7%) | 14,555 (13.4%) |
| | - Not in the Labor Force Female | 578 (17.5%) | 6,490 (17.4%) | 12,320 (18.7%) | 20,731 (19.1%) |
| INDUSTRY | 2014 Estimated Employed Population by Industry Employed In | 1,970 | 22,820 | 39,158 | 64,078 |
| | - Accommdtn/Food Svcs | 68 (3.5%) | 1,422 (6.2%) | 2,373 (6.1%) | 4,296 (6.7%) |
| | - Admin/Spprt/Waste Mgmt | 85 (4.3%) | 1,055 (4.6%) | 1,787 (4.6%) | 3,131 (4.9%) |
| | - Agriculture/Forest/Fish/Hunt/Mine | 42 (2.1%) | 132 (.6%) | 172 (.4%) | 306 (.5%) |
| | - Construction | 99 (5.0%) | 1,183 (5.2%) | 2,278 (5.8%) | 3,967 (6.2%) |
| | - Educational Svcs | 199 (10.1%) | 1,955 (8.6%) | 3,316 (8.5%) | 5,429 (8.5%) |
| | - Entertainment/Rec | 34 (1.7%) | 475 (2.1%) | 689 (1.8%) | 1,185 (1.8%) |
| | - Fin/Insur/RE/Rent/Lse | 114 (5.8%) | 1,070 (4.7%) | 2,029 (5.2%) | 3,235 (5.0%) |
| | - Health Care/Soc Asst | 356 (18.1%) | 3,678 (16.1%) | 6,120 (15.6%) | 9,613 (15.0%) |
| | - Information | 33 (1.7%) | 365 (1.6%) | 631 (1.6%) | 1,017 (1.6%) |
| | - Mgmt of Companies | 0 | 24 (.1%) | 103 (.3%) | 106 (.2%) |
| | - Oth Svcs | 124 (6.3%) | 1,380 (6.0%) | 2,152 (5.5%) | 3,308 (5.2%) |
| | - Prof/Sci/Tech/Admin | 128 (6.5%) | 1,341 (5.9%) | 2,387 (6.1%) | 3,471 (5.4%) |
| | - Public Administration | 162 (8.2%) | 2,396 (10.5%) | 4,134 (10.6%) | 6,277 (9.8%) |
| | - Retail Trade | 207 (10.5%) | 2,373 (10.4%) | 3,947 (10.1%) | 6,876 (10.7%) |
| | - Total Manufacturing | 199 (10.1%) | 2,547 (11.2%) | 4,436 (11.3%) | 7,459 (11.6%) |
| | - Transport/Warehse/Utils | 68 (3.5%) | 844 (3.7%) | 1,587 (4.1%) | 2,872 (4.5%) |
| - Wholesale Trade | 51 (2.6%) | 578 (2.5%) | 1,018 (2.6%) | 1,528 (2.4%) | |
| EMPLOYMENT | 2014 Estimated Employed Population by Job Type | 1,970 | 22,820 | 39,158 | 64,078 |
| | - Blue Collar | 223 (11.3%) | 3,869 (17.0%) | 6,543 (16.7%) | 12,221 (19.1%) |
| | - White Collar | 1,328 (67.4%) | 15,067 (66.0%) | 26,160 (66.8%) | 40,313 (62.9%) |
| | - Service & Farm | 419 (21.3%) | 3,884 (17.0%) | 6,455 (16.5%) | 11,544 (18.0%) |
| EMPLOYMENT | 2014 Estimated Employed Population by Class of Worker | 1,970 | 22,820 | 39,158 | 64,078 |
| | - Federal Government Workers | 227 (11.5%) | 2,836 (12.4%) | 5,204 (13.3%) | 7,930 (12.4%) |
| | - Local Government Workers | 195 (9.9%) | 2,188 (9.6%) | 3,644 (9.3%) | 5,971 (9.3%) |
| | - Private For-Profit Workers | 1,044 (53.0%) | 13,437 (58.9%) | 22,562 (57.6%) | 37,573 (58.6%) |
| | - Private Non-Profit Workers | 264 (13.4%) | 2,020 (8.9%) | 3,399 (8.7%) | 5,258 (8.2%) |
| | - Self-Emp Workers | 116 (5.9%) | 1,383 (6.1%) | 2,922 (7.5%) | 5,130 (8.0%) |
| | - State Government Workers | 123 (6.2%) | 951 (4.2%) | 1,409 (3.6%) | 2,173 (3.4%) |
| - Unpaid Family Workers | 0 | 4 (.0%) | 19 (.0%) | 44 (.1%) | |

HARBOUR VIEW STATION WEST :: DEMOGRAPHICS

| | 5860 Harbour View Blvd 1 mile radius | 5860 Harbour View Blvd 3 mile radius | 5860 Harbour View Blvd 5 mile radius | 5860 Harbour View Blvd 7 mile radius | |
|--------------------------|--|---|---|---|-----------------|
| ORIGIN | 2014 Estimated Hispanic Population by Origin | 270 | 2,527 | 3,696 | 5,852 |
| | - Cuban | 17 (6.3%) | 105 (4.2%) | 156 (4.2%) | 243 (4.2%) |
| | - Mexican | 78 (28.9%) | 775 (30.7%) | 1,157 (31.3%) | 1,949 (33.3%) |
| | - Other | 86 (31.9%) | 807 (31.9%) | 1,206 (32.6%) | 1,975 (33.7%) |
| | - Puerto Rican | 89 (33.0%) | 840 (33.2%) | 1,178 (31.9%) | 1,685 (28.8%) |
| HISPANIC BY RACE | 2014 Estimated Hispanic Population by Race | 270 | 2,527 | 3,696 | 5,852 |
| | - White | 88 (32.6%) | 1,132 (44.8%) | 1,759 (47.6%) | 2,589 (44.2%) |
| | - Black | 43 (15.9%) | 443 (17.5%) | 616 (16.7%) | 933 (15.9%) |
| | - Am. Indian or Alaska Native | 0 | 25 (1.0%) | 37 (1.0%) | 85 (1.5%) |
| | - Asian | 1 (.4%) | 14 (.6%) | 26 (.7%) | 51 (.9%) |
| | - Native Haw. Or Pac. Islander | 0 | 2 (.1%) | 5 (.1%) | 12 (.2%) |
| | - Other | 106 (39.3%) | 573 (22.7%) | 772 (20.9%) | 1,477 (25.2%) |
| | - Two or More | 32 (11.9%) | 338 (13.4%) | 481 (13.0%) | 704 (12.0%) |
| ASIAN BY CATEGORY | 2014 Estimated Asian Population by Category | 186 | 1,629 | 2,489 | 3,432 |
| | - Asian Indian | 27 (14.5%) | 360 (22.1%) | 517 (20.8%) | 632 (18.4%) |
| | - Cambodian | 0 | 0 | 0 | 0 |
| | - Chinese, except Taiwanese | 0 | 47 (2.9%) | 93 (3.7%) | 181 (5.3%) |
| | - Filipino | 102 (54.8%) | 661 (40.6%) | 936 (37.6%) | 1,259 (36.7%) |
| | - Hmong | 0 | 0 | 0 | 0 |
| | - Japanese | 9 (4.8%) | 34 (2.1%) | 49 (2.0%) | 57 (1.7%) |
| | - Korean | 47 (25.3%) | 359 (22.0%) | 525 (21.1%) | 694 (20.2%) |
| | - Laotian | 0 | 0 | 0 | 0 |
| | - Other or 2 or More | 0 | 42 (2.6%) | 149 (6.0%) | 285 (8.3%) |
| - Thai | 0 | 0 | 0 | 0 | |
| - Vietnamese | 1 (.5%) | 127 (7.8%) | 221 (8.9%) | 323 (9.4%) | |
| LANGUAGE | 2014 Estimated Population Over 5 Years Old by Language Spoken at Home | 4,074 | 45,509 | 78,784 | 129,395 |
| | - Speak Asian or Pacific Island Language at Home | 88 (2.2%) | 897 (2.0%) | 1,276 (1.6%) | 1,653 (1.3%) |
| | - Speak IndoEuropean Language at Home | 84 (2.1%) | 738 (1.6%) | 1,344 (1.7%) | 2,183 (1.7%) |
| | - Speak Only English at Home | 3,767 (92.5%) | 42,795 (94.0%) | 74,305 (94.3%) | 122,118 (94.4%) |
| | - Speak Other Language at Home | 0 | 31 (.1%) | 69 (.1%) | 310 (.2%) |
| | - Speak Spanish at Home | 135 (3.3%) | 1,049 (2.3%) | 1,790 (2.3%) | 3,131 (2.4%) |

| | 5860 Harbour View Blvd 1 mile radius | 5860 Harbour View Blvd 3 mile radius | 5860 Harbour View Blvd 5 mile radius | 5860 Harbour View Blvd 7 mile radius |
|--|---|---|---|---|
| 2014 Estimated Population by Ancestry | 4,386 | 49,096 | 84,382 | 138,703 |
| - Unclassified | 277 (.63%) | 3,829 (7.8%) | 8,072 (9.6%) | 13,750 (9.9%) |
| - Arab | 17 (.4%) | 75 (.2%) | 239 (.3%) | 378 (.3%) |
| - Czech | 0 | 29 (.1%) | 82 (.1%) | 132 (.1%) |
| - Danish | 8 (.2%) | 25 (.1%) | 82 (.1%) | 142 (.1%) |
| - Dutch | 13 (.3%) | 205 (.4%) | 416 (.5%) | 641 (.5%) |
| - English | 240 (5.5%) | 2,455 (5.0%) | 6,134 (7.3%) | 9,596 (6.9%) |
| - French (except Basque) | 64 (1.5%) | 455 (.9%) | 1,053 (1.2%) | 1,515 (1.1%) |
| - French Canadian | 17 (.4%) | 128 (.3%) | 364 (.4%) | 487 (.4%) |
| - German | 401 (9.1%) | 3,168 (6.5%) | 5,432 (6.4%) | 7,942 (5.7%) |
| - Greek | 0 | 46 (.1%) | 116 (.1%) | 198 (.1%) |
| - Hungarian | 0 | 35 (.1%) | 74 (.1%) | 111 (.1%) |
| - Irish | 215 (4.9%) | 2,596 (5.3%) | 5,155 (6.1%) | 8,197 (5.9%) |
| - Italian | 147 (3.4%) | 1,209 (2.5%) | 2,275 (2.7%) | 3,370 (2.4%) |
| - Lithuanian | 7 (.2%) | 21 (.0%) | 25 (.0%) | 28 (.0%) |
| - Norwegian | 95 (2.2%) | 365 (.7%) | 427 (.5%) | 583 (.4%) |
| - Other ancestries | 2,213 (50.5%) | 25,752 (52.5%) | 38,012 (45.0%) | 66,648 (48.1%) |
| - Polish | 10 (.2%) | 198 (.4%) | 674 (.8%) | 1,098 (.8%) |
| - Portuguese | 20 (.5%) | 90 (.2%) | 124 (.1%) | 157 (.1%) |
| - Russian | 5 (.1%) | 40 (.1%) | 114 (.1%) | 182 (.1%) |
| - Scotch-Irish | 54 (1.2%) | 511 (1.0%) | 829 (1.0%) | 1,354 (1.0%) |
| - Scottish | 79 (1.8%) | 598 (1.2%) | 1,116 (1.3%) | 1,842 (1.3%) |
| - Slovak | 0 | 20 (.0%) | 44 (.1%) | 52 (.0%) |
| - Sub-Saharan African | 17 (.4%) | 563 (1.1%) | 737 (.9%) | 1,428 (1.0%) |
| - Swedish | 6 (.1%) | 99 (.2%) | 173 (.2%) | 272 (.2%) |
| - Swiss | 1 (.0%) | 38 (.1%) | 110 (.1%) | 155 (.1%) |
| - Ukrainian | 0 | 155 (.3%) | 220 (.3%) | 260 (.2%) |
| - United States or American | 434 (9.9%) | 5,735 (11.7%) | 11,203 (13.3%) | 16,632 (12.0%) |
| - Welsh | 7 (.2%) | 120 (.2%) | 370 (.4%) | 508 (.4%) |
| - West Indian (exc Hisp Groups) | 40 (.9%) | 537 (1.1%) | 712 (.8%) | 1,045 (.8%) |

ANCESTRY

HARBOUR VIEW STATION WEST :: DEMOGRAPHICS

| | 5860 Harbour View Blvd 1 mile radius | 5860 Harbour View Blvd 3 mile radius | 5860 Harbour View Blvd 5 mile radius | 5860 Harbour View Blvd 7 mile radius |
|--|--|--|--|--|
| Total Number of Employees | 3,641 | 13,340 | 24,386 | 43,581 |
| Management, Business, and Professional | 1,298 (35.7%) | 4,225 (31.7%) | 7,471 (30.6%) | 14,250 (32.7%) |
| - Management | 292 (8.0%) | 1,008 (7.6%) | 1,822 (7.5%) | 3,205 (7.4%) |
| - Business and financial operations | 193 (5.3%) | 557 (4.2%) | 953 (3.9%) | 1,710 (3.9%) |
| - Computer and Mathematical | 49 (1.4%) | 162 (1.2%) | 252 (1.0%) | 451 (1.0%) |
| - Architecture and Engineering | 12 (.3%) | 67 (.5%) | 117 (.5%) | 263 (.6%) |
| - Life, Physical, and Social Science | 14 (.4%) | 43 (.3%) | 66 (.3%) | 151 (.3%) |
| - Community and Social Services | 83 (2.3%) | 248 (1.9%) | 469 (1.9%) | 956 (2.2%) |
| - Legal | 4 (.1%) | 27 (.2%) | 47 (.2%) | 70 (.2%) |
| - Education, Training, and Library | 40 (1.1%) | 627 (4.7%) | 1,506 (6.2%) | 2,844 (6.5%) |
| - Arts, Design, Entertainment, Sports, and Media | 41 (1.1%) | 142 (1.1%) | 273 (1.1%) | 457 (1.0%) |
| - Healthcare Practitioners and Technical | 567 (15.6%) | 1,343 (10.1%) | 1,966 (8.1%) | 4,144 (9.5%) |
| Sales and Office | 1,013 (27.8%) | 3,781 (28.3%) | 7,003 (28.7%) | 10,705 (24.6%) |
| - Sales and Related | 437 (12.0%) | 1,819 (13.6%) | 3,516 (14.4%) | 5,019 (11.5%) |
| - Office and Administrative Support | 577 (15.8%) | 1,962 (14.7%) | 3,487 (14.3%) | 5,687 (13.0%) |
| Service | 568 (15.6%) | 2,063 (15.5%) | 3,554 (14.6%) | 6,460 (14.8%) |
| - Healthcare Support | 117 (3.2%) | 313 (2.3%) | 469 (1.9%) | 905 (2.1%) |
| - Protective Service | 16 (.4%) | 87 (.7%) | 199 (.8%) | 400 (.9%) |
| - Food Preparation and Serving Related | 54 (1.5%) | 275 (2.1%) | 540 (2.2%) | 1,093 (2.5%) |
| - Building and Grounds Cleaning and Maintenance | 217 (6.0%) | 707 (5.3%) | 1,169 (4.8%) | 2,197 (5.0%) |
| - Personal Care and Service | 165 (4.5%) | 680 (5.1%) | 1,178 (4.8%) | 1,865 (4.3%) |
| Trade & Labor | 487 (13.4%) | 1,992 (14.9%) | 3,985 (16.3%) | 8,888 (20.4%) |
| - Farming, Fishing, and Forestry | 48 (1.3%) | 63 (.5%) | 99 (.4%) | 116 (.3%) |
| - Construction and Extraction | 93 (2.6%) | 384 (2.9%) | 927 (3.8%) | 3,165 (7.3%) |
| - Installation, Maintenance, and Repair | 115 (3.1%) | 507 (3.8%) | 949 (3.9%) | 1,766 (4.1%) |
| - Production | 70 (1.9%) | 270 (2.0%) | 499 (2.0%) | 1,216 (2.8%) |
| - Transportation and Material Moving | 162 (4.4%) | 768 (5.8%) | 1,510 (6.2%) | 2,626 (6.0%) |
| Unclassified | 273 (7.5%) | 1,279 (9.6%) | 2,373 (9.7%) | 3,277 (7.5%) |

Location

Longitude

Latitude

1. 5860 Harbour View Blvd - 1 mile radius
2. 5860 Harbour View Blvd - 3 mile radius
3. 5860 Harbour View Blvd - 5 mile radius
4. 5860 Harbour View Blvd - 7 mile radius

- 76.439086
 -76.439086
 -76.439086
 -76.439086

- 36.874183
 36.874183
 36.874183
 36.874183

