



WALDORF ASTORIA  
NEW YORK

# LUXURY RETAIL SPACE



WALDORF ASTORIA NEW YORK 301 PARK AVENUE

UP TO 33,000 TOTAL SQUARE FEET OF LUXURY RETAIL SPACE, IDEAL FOR PREMIER GLOBAL BRANDS.



## A LANDMARK BUILDING

Welcome to the legendary Waldorf Astoria New York, a flagship beacon of timeless glamour and luxury standing tall above Park Avenue since 1893. For over a century, this global iconic address has been a magnet for world leaders, royals, celebrities, and discerning individuals, and remains a symbol of sophistication and style.

---

## A LAVISH RESTORATION

Waldorf Astoria New York is undergoing an unprecedented transformation, with over \$1 billion invested to become the city's finest hotel, and introducing condominium residences for the very first time. Upon reopening in 2024, this fully repositioned property will once again stand proudly in the heart of Manhattan as the prestigious cornerstone hotel, residences, retail, and event space where over \$30 billion of private and public investment is shaping the future.

Welcome to a new era of luxury and legacy at  
Waldorf Astoria New York.



**Three magnificent multi-level corner opportunities with over 150 FT of double height frontage and up to 20 FT ceilings.**

## LUXURY SPACES: OVERVIEW

Impeccably re-imagined retail spaces harmonize aesthetics and functionality to create an atmosphere that exudes elegance and exclusivity.

### LOCATION & VISIBILITY

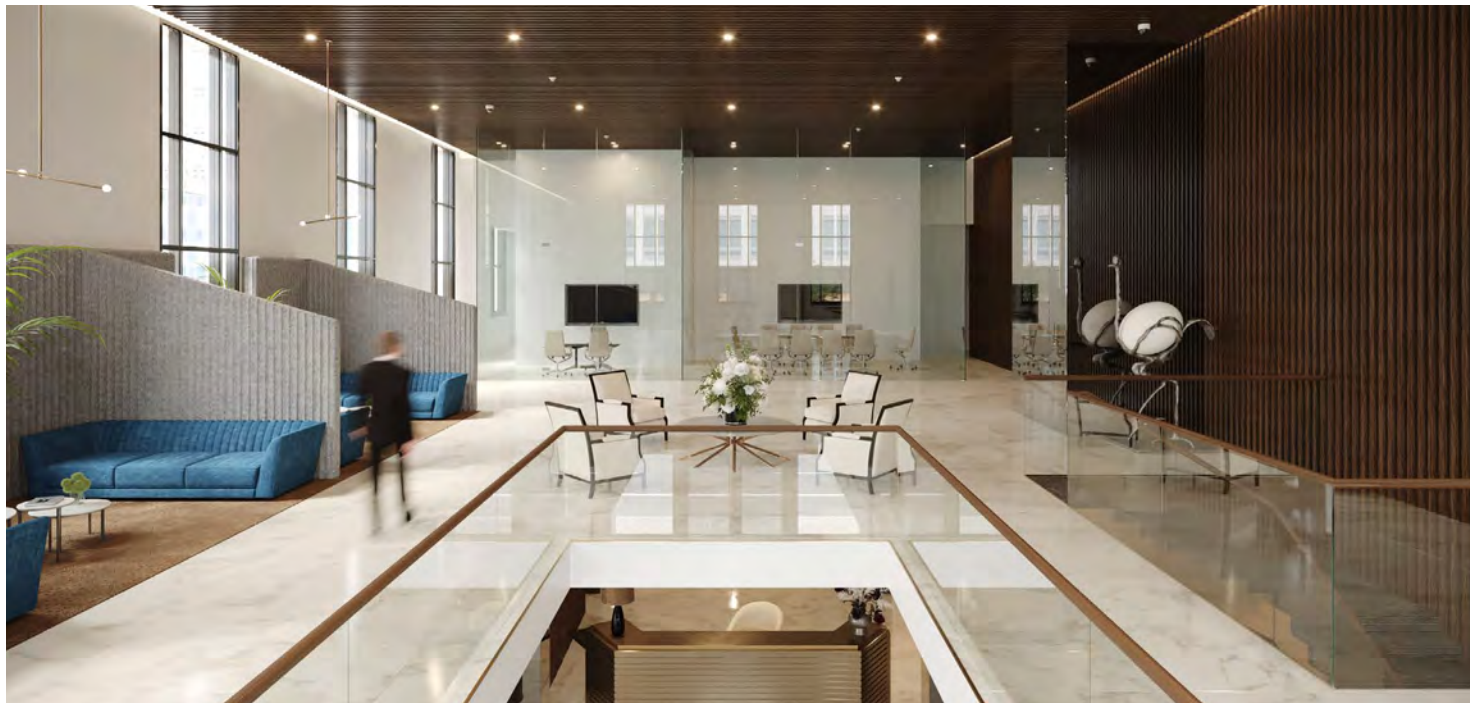
Prestigiously located along Park Avenue and Lexington Avenue, with expansive display windows and high ceilings.

### SPECIFICATIONS

Park Ave N	10,600 SF
Park Ave S	13,200 SF
Lexington Ave S	9,500 SF



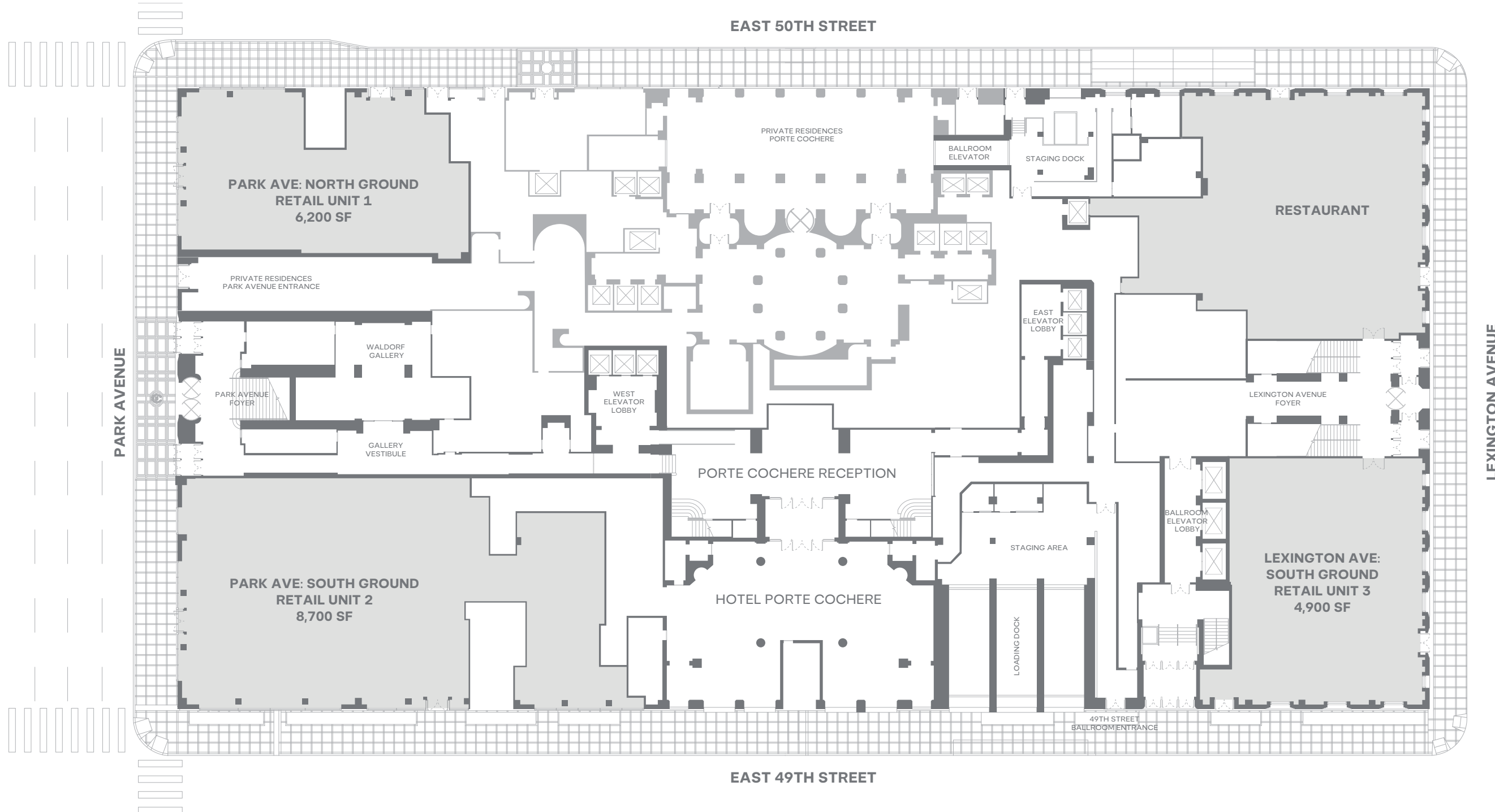
FASHION – JEWELRY



PRIVATE BANKING

# GROUND FLOOR

EAST 50TH STREET



PARK AVENUE

LEXINGTON AVENUE

EAST 49TH STREET

49TH STREET  
BALLROOM ENTRANCE

# LOBBY LEVEL





## AMENITIES & SERVICES

Waldorf Astoria New York's flagship retailers will attract a built-in audience of high-net-worth owners and hotel guests with discerning tastes, catering to 375 best-in-class guest rooms and suites, and 372 upscale residences, in addition to our 486,000 office workers in the surrounding area.

### FOOD & BEVERAGE

Signature Hotel fine dining restaurant on the corner of 50<sup>th</sup> and Lexington, and multiple elegant bars available to hotel guests, residents, and the public.

### EVENT SPACES

Over 50,000 square feet of landmarked event spaces including the second largest ballroom in New York, which will be the city's premiere event venue.

### SPA

The hotel spa available to hotel guests, residents, and the public provides 30,000 square feet of best-in-class wellness facilities and treatment rooms—enhanced by a holistic nutrition, fitness, and beauty program.

### VALET PARKING

Valet parking makes your clientele feel welcomed and cared for, as it makes your business even more convenient to patronize.

### 24/7 SECURITY

The Waldorf Astoria New York provides 24/7 security, to protect your employees, clientele, and valuable merchandise around the clock.

# THE NEIGHBORHOOD

The Waldorf Astoria is at the heart of New York life. Our Art Deco towers rise amidst some of the city's most famed cultural institutions, restaurants, landmarks, and public parks, as well as iconic fashion destinations, major corporate headquarters, and luxury residential high-rises.

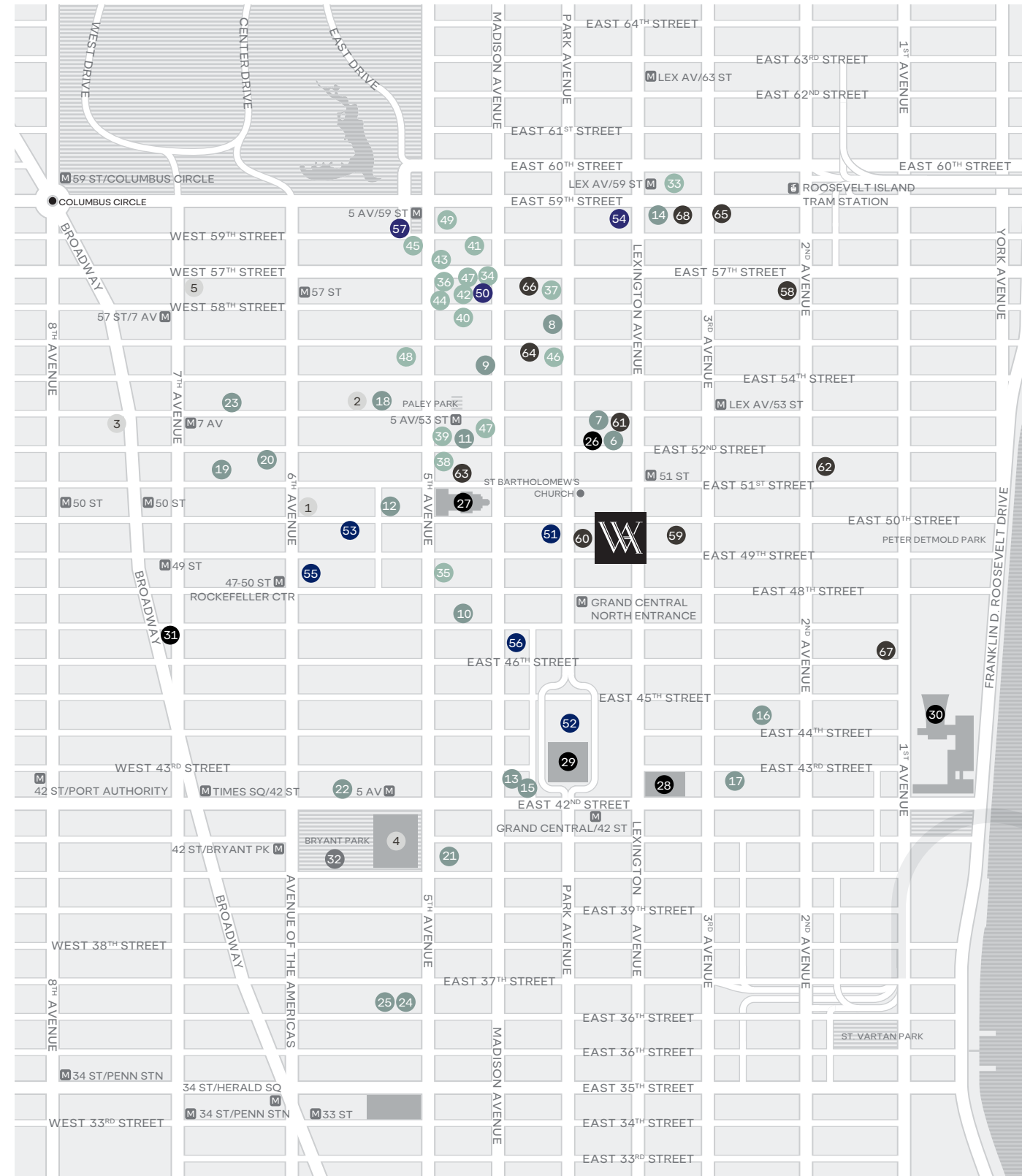
## DEMOGRAPHICS & MARKET DATA

A luxury retail space at the Waldorf Astoria New York is poised for success, given the demographics, consumer preferences, and purchasing power of the population living, working, and visiting within a 10-block radius, including:

- **120,000,000 SF** of existing office space
- **2,000+** 5-star hotel keys
- **130+** high-end retailers
- **100+** Fortune 500 corporate headquarters
- **200+** restaurants
- **486,000 employees** at work

Walking distances from the Waldorf Astoria New York, at 301 Park Avenue:

- |                             |                                 |                               |  |
|-----------------------------|---------------------------------|-------------------------------|--|
| ● CULTURAL INSTITUTIONS     | 18. The Modern                  | 34. Rolex                     | 53. NBCUniversal                               |
| 1. Radio City Music Hall    | 19. Le Bernardin                | 35. Saks Fifth Avenue         | 54. Bloomberg                                  |
| 2. The Museum of Modern Art | 20. Mastro's Steakhouse         | 36. Tiffany & Co.             | 55. Simon & Schuster                           |
| 3. Broadway theaters        | 21. Sushi Ginza Onodera         | 37. Q New York - Aston Martin | 56. J.P. Morgan                                |
| 4. New York Public Library  | 22. Gabriel Kreuther            | 38. Cartier                   | 57. The Estée Lauder Companies                 |
| 5. Carnegie Hall            | 23. La Grande Boucherie         | 39. Ferragamo                 |  |
|                             | 24. Ai Fiori                    | 40. Armani                    | ● LUXURY RESIDENTIAL HIGH-RISES                |
| ● RESTAURANTS               | 25. Tonchin                     | 41. Fendi                     | 58. 252 East 57th Street                       |
| 6. Le Jardinier             |                                 | 42. Gucci                     | 59. The Centrale                               |
| 7. The Grill                | ● LANDMARKS & ATTRACTIONS       | 43. Louis Vuitton             | 60. <b>Waldorf Astoria Residences New York</b> |
| 8. Aquavit                  | 26. Seagram Building            | 44. Prada                     | 61. Selene                                     |
| 9. Caviar Russe             | 27. St. Patrick's Cathedral     | 45. Bergdorf Goodman          | 62. Halcyon                                    |
| 10. Kurumazushi             | 28. Chrysler Building           | 46. Ferrari                   | 63. Olympic Tower                              |
| 11. La Grenouille           | 29. Grand Central Station       | 47. Bucherer 1888             | 64. Park Avenue Place                          |
| 12. Le Rock                 | 30. United Nations Headquarters | 48. Wempe Jewelers            | 65. 200 East 59                                |
| 13. Centurion Lounge        | 31. Times Square                | 49. Christian Dior            | 66. 432 Park Avenue                            |
| 14. Hutong                  | 32. Bryant Park                 |                               | 67. 50 United Nations Plaza                    |
| 15. Le Pavillon             |                                 | ● CORPORATE HEADQUARTERS      | 68. One Beacon Court                           |
| 16. Sushi AMANE             | ● LUXURY SHOPPING               | 50. Morgan Stanley            |  |
| 17. Sushi Yasuda            | 33. Bloomingdale's              | 51. Colgate-Palmolive         |  |
|                             |                                 | 52. MetLife                   |  |





WALDORF ASTORIA®  
NEW YORK

*Our dedicated leasing team is eager to help you realize your vision  
of a luxury store at the Waldorf Astoria New York.  
Contact us for more information or to schedule a private consultation.*

ANDREW GOLDBERG

T +1 212 984 8155 andrew.goldberg@cbre.com

JARED LACK

T +1 212 984 6507 jared.lack@cbre.com

CHRISTOPHER HEYN

T +1 212 656 0596 christopher.heyn@cbre.com

**CBRE**

© 2023 CBRE, Inc. All rights reserved. This information has been obtained from sources believed reliable, but has not been verified for accuracy or completeness. You should conduct a careful, independent investigation of the property and verify all information. Any reliance on this information is solely at your own risk. CBRE and the CBRE logo are service marks of CBRE, Inc. All other marks displayed on this document are the property of their respective owners, and the use of such logos does not imply any affiliation with or endorsement of CBRE.

Any exterior signage is subject to Landmarks Preservation Commission approval