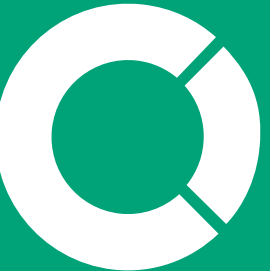




the centre  
livingston



Hines

15.3 million  
footfall

56%  
market share  
the dominant centre  
in core catchment

£741M  
non-grocery catchment  
spend

1 million  
sq ft of shopping  
and leisure

166  
stores, restaurants  
and cafés



60%  
of Scotland's population  
within 60 minutes radius

7,000  
car parking spaces  
in Livingston

862,000  
residential catchment  
population

FASHION ANCHORS

DEBENHAMS PRIMARK® M&S 

EST. 1884

TOPSHOP next NEW LOOK





## NEW STORES



Lack of competition in the immediate proximity and good accessibility via the M8 & M9 mean the centre maintains a strong market share across the principal catchment.



82  
minutes  
dwell time

*"Our first week trading at The Centre has been exceptional with trade over 100% up on target. Shopper response has been amazing and we feel very positive that Livingston will be one of our top trading stores"*

- Smiggle Store Manager

The Centre Livingston boasts a thriving catchment with an average annual household spend of 7% above Scottish average and 4% above the UK average. Affluent Achievers make up 15% of the catchment.

40+  
stores offer click  
& collect service



£59  
per head  
retail spend



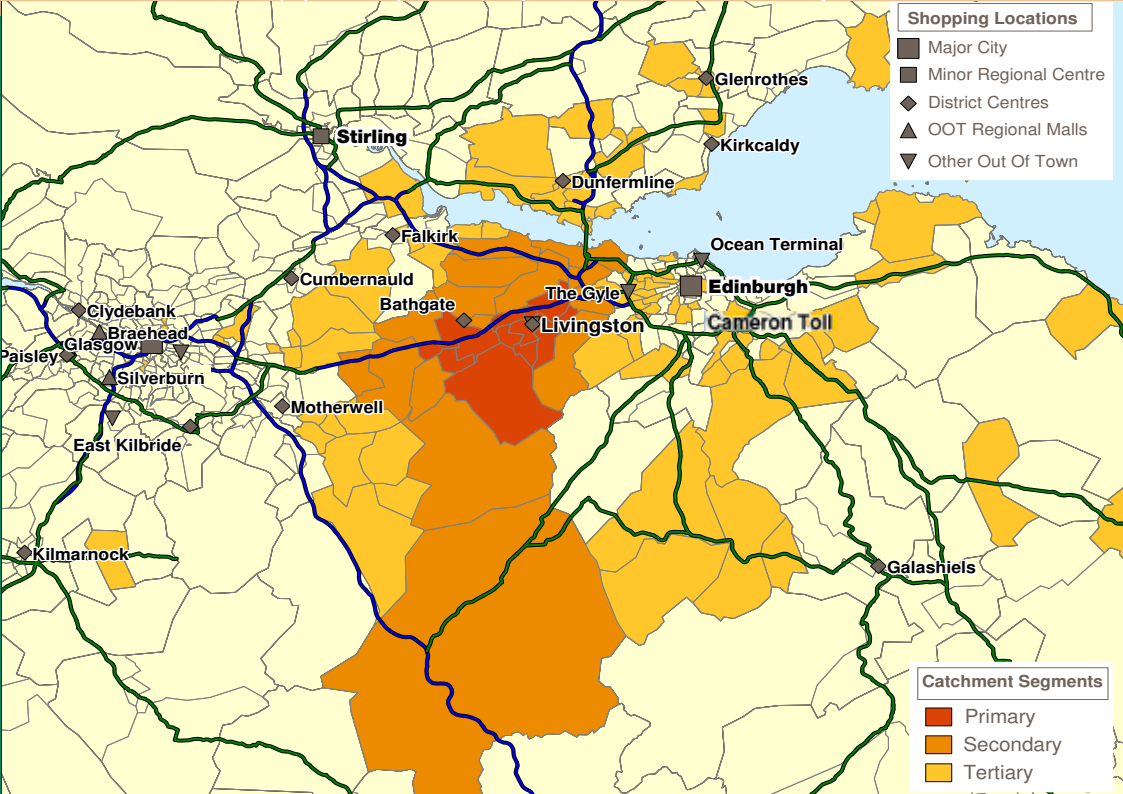


3,000  
new homes being built  
by 2021

5.5%  
local population  
growth by 2025



£1.8m  
mall refurbishment  
programme



# A PRIME LOCATION

The Centre Livingston lies in Scotland's commercial heartland between the key cities of Edinburgh and Glasgow. The Centre is three miles from the M8 and nine miles from Edinburgh Airport.

8,000  
local local student  
population



Research Sources CACI September 2016 & FSP May 2016



# VACANT UNITS

- UNITS UNDER OFFER
- VACANT UNITS

- Unit 24a:** 1st floor 1,765 sq ft
- Unit 66:** GF 885 sq ft & FF 239 sq ft
- Unit 67:** GF 922 sq ft & FF 245 sq ft
- Unit 92:** GF 25,621 sq ft & FF 6,092 sq ft
- Unit 97b:** GF 4,315 sq ft
- Unit 101:** GF 1,143 sq ft & FF 815 sq ft
- Unit 307:** GF 6,783 sq ft & FF 7,369 sq ft
- Unit 338:** 2nd floor 17,000 sq ft
- Unit 346:** GF 2,255 sq ft



# OUR FOOD OFFER

The Centre Livingston enjoys a broad range of places to eat and drink with 6 restaurants, 13 cafés and an abundance of grab-and-go food offerings.



wagamama



COSTA

ASKITALIAN



GREGGS



# Hines

SHARON BLOODWORTH  
0207 292 1964  
sharon.bloodworth@hines.com

EMME HAYCOCK  
0207 292 1923  
emme.haycock@hines.com



ESTELLE FORRESTER  
0141 222 5851  
EForrester@savills.com

VICTORIA FREED  
0141 222 4126  
victoria.freed@savills.com



IAN WHELAN  
0131 558 5121  
iwhelan@eyco.co.uk

TOM FORSTER  
0131 558 5130  
tforster@eyco.co.uk

ALASTAIR ROWE  
0131 558 5140  
arowe@eyco.co.uk

[www.thecentrelivingston.com](http://www.thecentrelivingston.com)