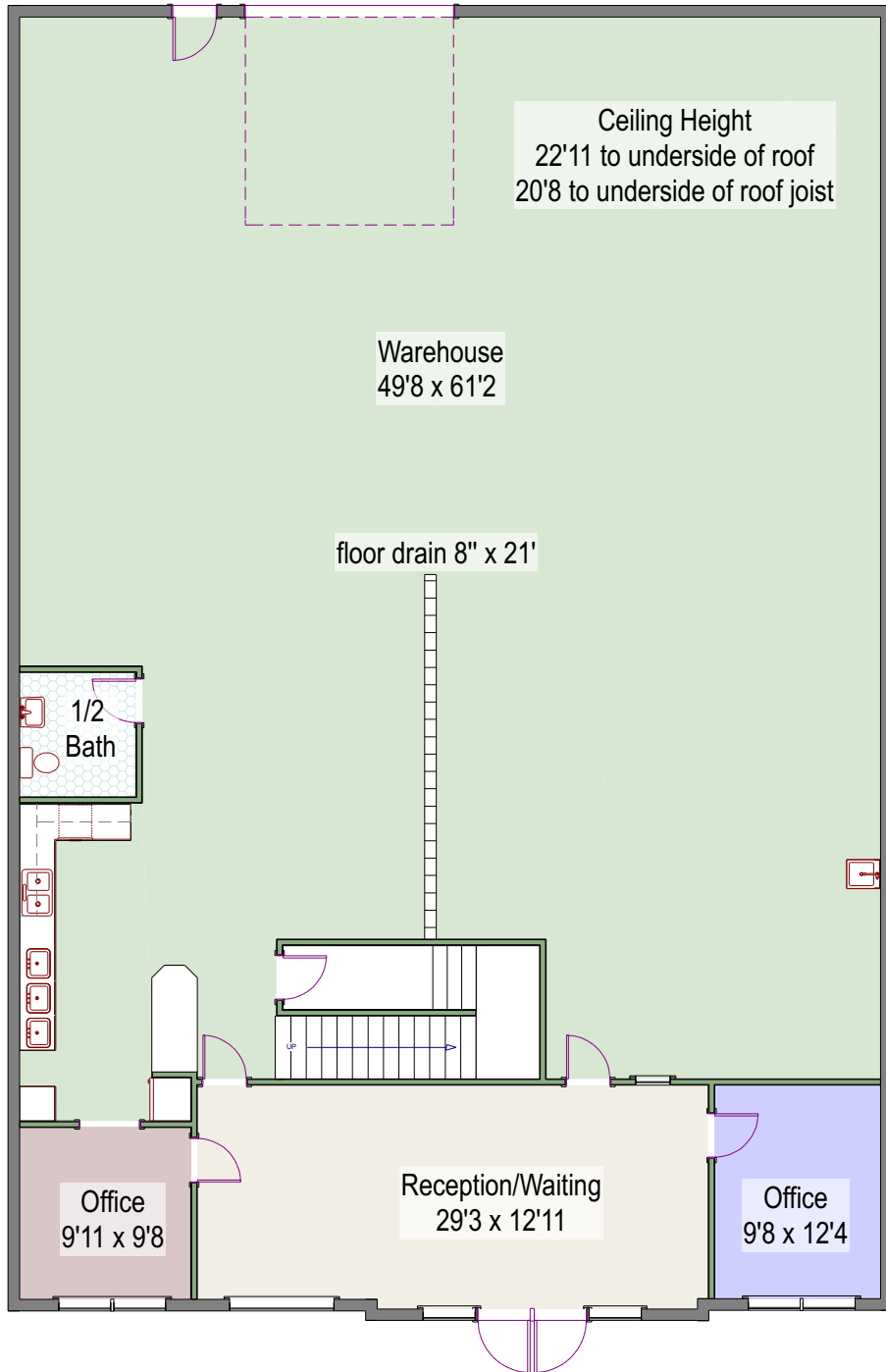
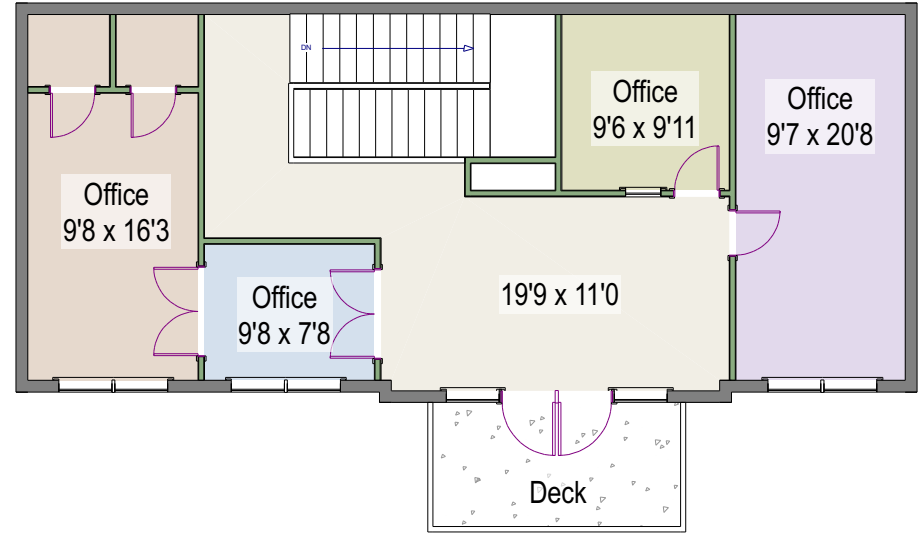


Main Level - 3788 square feet +/-

1849 Cherry Street, #3
Louisville, Colorado



Upper Level - 1119 square feet +/-



Bill Goodacre
 (303)880-4440 mobile
 (303)449-3434 office
 bill@goodacreproperties.com



While every attempt has been made to ensure the accuracy of the floorplan contained here, measurements of doors, windows and rooms are approximate and no responsibility is taken for any omission or mis-statement. These plans are for visual representation purposes only and should be used as such by any prospective purchaser. Floor plan is not an architectural as-built. Square footage measurements are based on an 8" exterior wall and a 6" tenant demising wall and are not guaranteed.

Floor Plans created by Overhead Views, (303)886-9578, esw@overheadviews.com