

SPACE AVAILABLE



411 Eagleview Blvd

16,133 sq ft | 5,928 sq ft | 1,668 sq ft | Divisible | Available Immediately
Competitive Terms

EagleviewSM is an exceptional place to do business. 411 Eagleview Boulevard is a 32,120 square foot single story Class A office building overlooking a pond is within 1/4 mile of the PA Turnpike.

411 Eagleview Blvd is conveniently located near Eagleview Town Center's numerous amenities. Eagleview Town Center, home of Restaurant Row, features amenities such as al fresco dining, an award-winning bookstore, fitness centers, a daycare, walking trails, a farmers market & more! Ample parking welcomes employees and visitors, and nearby shops and services create a work environment that is both efficient and enjoyable.

EAGLEVIEWSM

BUILDING FEATURES

- Contemporary brick & glass exterior
- 126 parking spaces (4/1,000 sq ft)
- Fully sprinklered
- Energy management system
- Access control system
- Prestige lobby appointments
- Individually tailored tenant suites
- Ample tenant identification
- 24/7 property management

NEW FEATURES

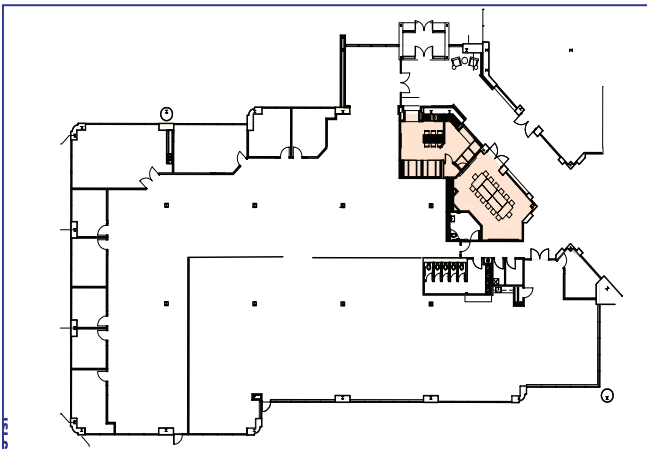
- New building entry façade featuring curtainwall, cast stone masonry and architectural metal cladding
- New landscaped and collaborative courtyard between buildings
- New airlock vestibule building entrance into new renovated lobby space
- New state of the art, efficient lighting in lobby and common spaces



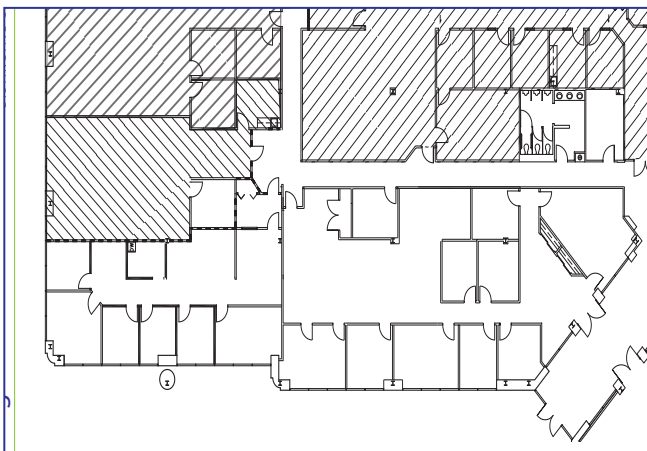
610.458.1900
HankinGroup.com

SPACE AVAILABLE

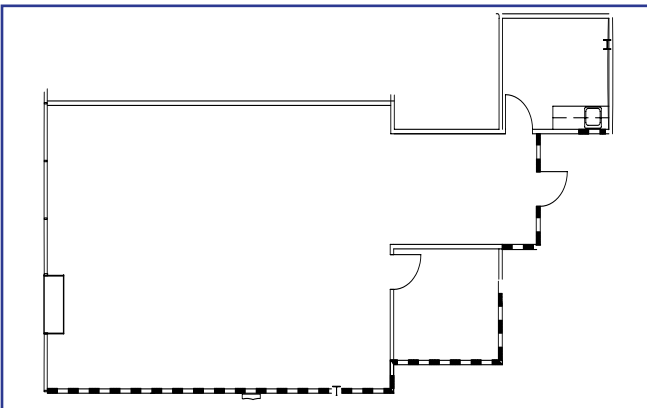
411 Eagleview Blvd



Suite 102 16,133 rsf



Suite 1XX 5,928 rsf



Suite 110 1,668 rsf

EAGLEVIEWSM

To schedule a tour or for more information, please contact:

STACY MARTIN
stacy.martin@hankingroup.com

SAM SHERRILL
sam.sherrill@hankingroup.com

Hankin Group
707 Eagleview Blvd
Exton, PA 19341
HankinGroup.com

P 610.458.1900
F 610.458.0764



© 1900 | HankinGroup.com
www.HankinGroup.com | Exton, PA 19341

EAGLEVIEW REGIONAL MAP

FROM PHILADELPHIA

Take Rt. 76 West to the PA Turnpike. Take the PA Turnpike West to exit 312. Follow Rt. 100 North to the first traffic light. Stay to the right and follow the jughandle to cross over Rt. 100 onto Eagleview Blvd. Take the third left turn and 411 Eagleview will be second to the right.

FROM WILMINGTON

Take Rt. 202 North to Rt. 100 North. When you have passed the PA Turnpike entrance you will come to a traffic light. Stay to your right and follow the jughandle to cross over Rt. 100 onto Eagleview Blvd. Take the third left turn and 411 Eagleview will be second to the right.



610.458.1900
HankinGroup.com