

948 WEST ARMITAGE AVENUE

lincoln park / chicago, il

AVAILABLE NOW



MID-AMERICA[®] URBAN

948 WEST ARMITAGE AVENUE

lincoln park / chicago, il

ADDRESS

948 West Armitage Avenue
North block of West Armitage Street between
North Sheffield and North Bissel Streets

AVAILABILITY

1,738 SF

DEMOGRAPHICS

	.5M	1M	1.5M
AVG HOUSEHOLD INCOME -	\$174,793	\$145,893	\$136,813
POPULATION -	15,060	63,303	141,955
DAYTIME POPULATION -	12,616	46,328	11,040

CO-TENANTS

Starbucks, Vosges Haut Chocolate, Le Pain
Quotidien, Paper Source, The Tie Bar, The Blk
Tux, Old Town School of Music, Kiehl's, Jeni's
Splendid Ice Cream, Foxtrot, LUSH

FEATURES

Second generation retail/restaurant space available
for immediate occupancy in the dynamic Armitage and
Halsted Shopping District

Surrounded by strong mix of international, national
and local retailers and restaurants

Directly adjacent to Armitage Brown/Purple CTA El
Stop with more than 1.342M riders annually

Approximately one block south of DePaul University

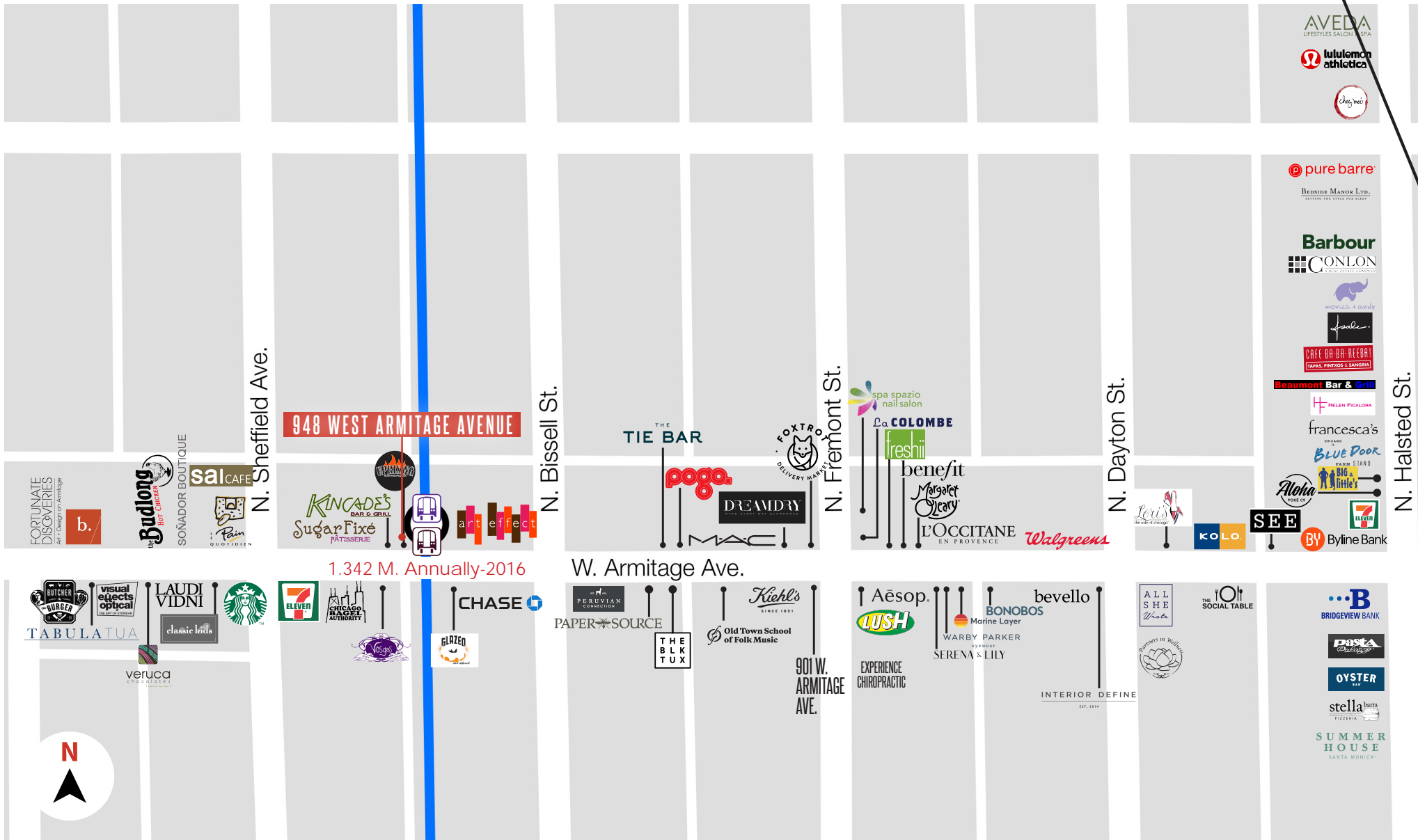
SPACE DETAILS



948 WEST ARMITAGE AVENUE

lincoln park / chicago, il

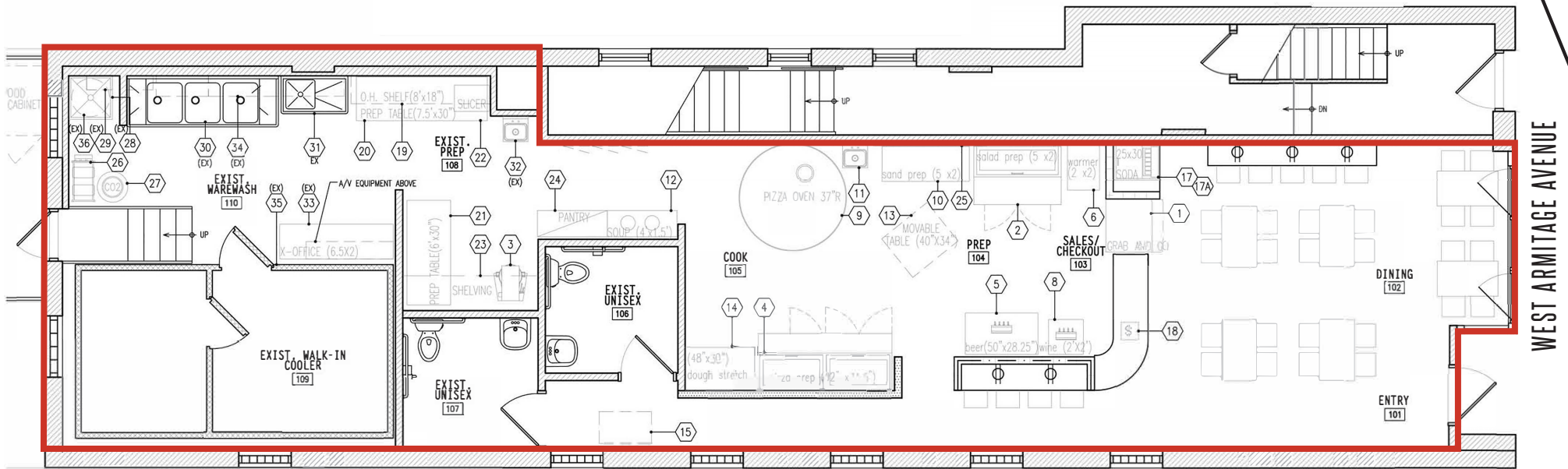
AREA RETAIL MAP



948 WEST ARMITAGE AVENUE

lincoln park / chicago, il

FLOOR PLAN



WEST ARMITAGE AVENUE

SPACE DETAILS

1,738 SF - First Floor





lets talk. **BIG**

IDEAS?

PAUL BRYANT

Mid-America Real Estate Corp.
630.954.7354
PBryant@MidAmericaGrp.com

GREG BAYER

Mid-America Real Estate Corp.
630.954.7441
GBayer@MidAmericaGrp.com

LARA KEENE

Mid-America Real Estate Corp.
630.481.4038
LKeene@MidAmericaGrp.com



MID-AMERICA[®]
Real Estate Corporation

