



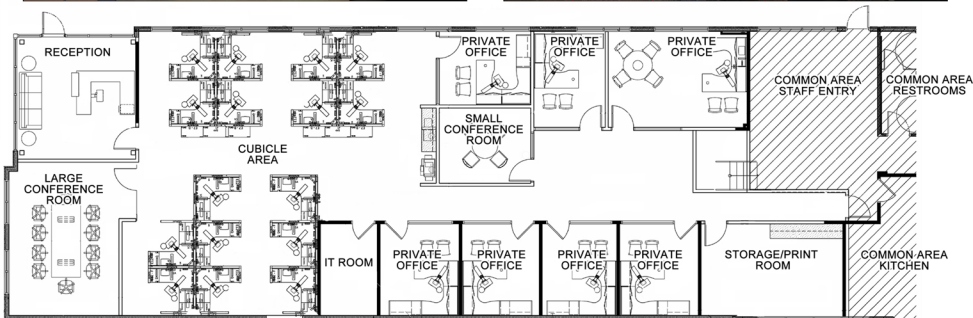
4,752 sq. ft. • High end finishes • Convenient location

FOR LEASE - Available July 2019

Office space in Georgetown, TX

Property Highlights: rental rate \$19.00 PSF+ NNN, conveniently located directly off of IH-35, minutes to Round Rock and downtown Georgetown, high end finishes, ample parking, green space for employees plus nearby shopping and dining. Located at 4411 South IH-35, Georgetown, TX 78626.

Call 512-271-3911 or email mattis@jjacobsent.com



Please note: Reception area furniture, large conference room furniture, and private office desks are included. Cubicles and some other items may not be included in the space.