

Blue Star House, 234-244 Stockwell Road, Brixton SW9

4,100 – 8,200 sq. ft. Available



Location

Blue Star House is prominently located at the southern end of Stockwell Road, close to the junction with Brixton Road and directly opposite the Brixton Academy. The property is in close proximity to the amenities of Brixton and Clapham, including some 65 metres from the contemporary Department Store development. Brixton Underground and mainline stations are located just 3-minutes' walk away, providing direct access to Central London (7 minutes to Victoria).

Description

Blue Star House comprises an 11 storey office building with 2 x 8 person passenger lifts serving all floors. The floors benefit from an abundance of natural light and command fantastic views over Central London. The property further benefits from car parking located to the rear of the site.

Transport Links

Brixton		3 minutes
Stockwell		12 minutes
Clapham North		15 minutes

Montagu Evans LLP for themselves and for the vendors or lessors of this property whose agents they are give notice that: (i) the particulars are set as a general outline only for the guidance of intending purchasers or lessees and do not constitute the whole or any part of an offer or contract; (ii) all descriptions, dimensions, references to condition and necessary permissions for use and occupation, and other details are given in good faith but without any responsibility whatsoever and any intending purchasers or tenants should not rely on them as statements or representations of fact, but must satisfy themselves by inspection or otherwise as to the correctness of each of them; (iii) neither Montagu Evans LLP nor its employers has any authority to make or give any representation or warranties whatsoever in relation to this property; (iv) unless otherwise stated all prices and rents are quoted exclusive of VAT, and intending purchasers or lessees must satisfy themselves independently as to the applicable VAT position.

Office Specification

The accommodation benefits from the following amenities:

- 2 x 8 Person Passenger Lifts
- 24 hour access
- Car parking available
- Perimeter trunking
- Central heating
- EPC Available on request

Available Space

7th floor – 4,100 sq. ft.

5th floor – 4,100 sq. ft.

Terms

A new lease is available from the landlord for a term by arrangement.

Rent: POA

Rates: c. £13.00 per sq. ft. (2018/19)

Service Charge: c. £6.20 per sq. ft.

Contact

For further information or to arrange a viewing, please contact:

Robert Skioldebrand 020 7312 7443

Robert.Skioldebrand@montagu-evans.co.uk

Alec Linfield 020 7866 7628

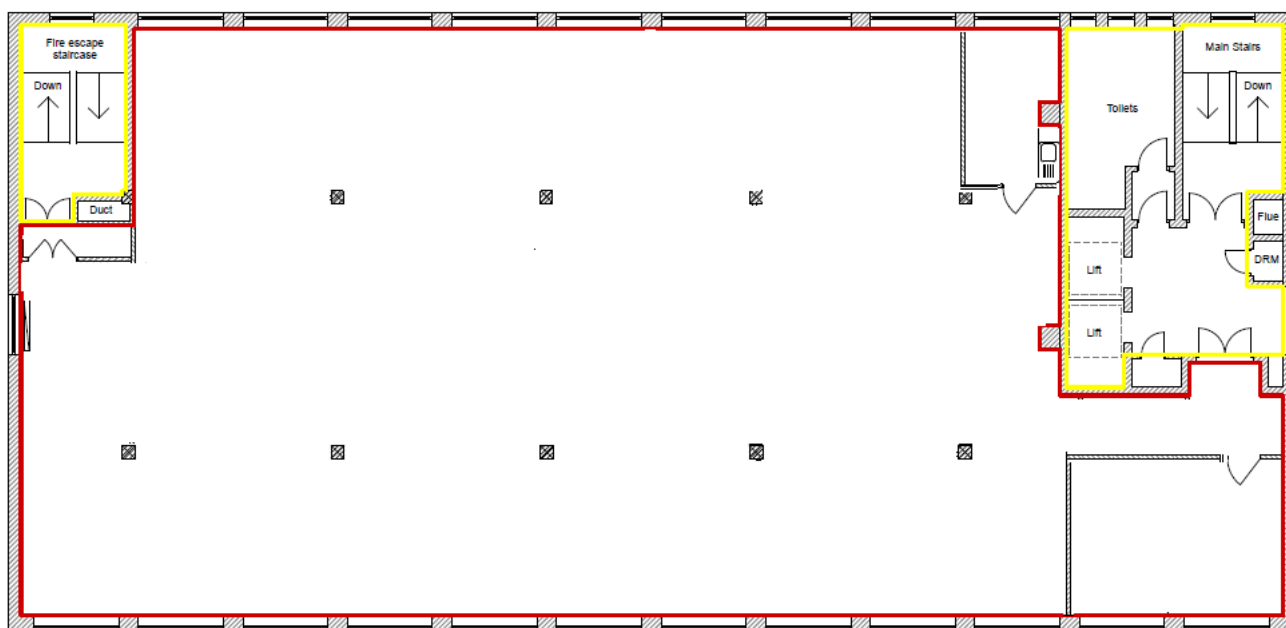
Alec.Linfield@montagu-evans.co.uk

Katie Stewart 020 7866 8692

Katie.Stewart@montagu-evans.co.uk

Floor Plan & Photographs

7th Floor Plan



View from Blue Star House

