

# Affordable Unit - Built-to-Suit your Needs

Click Here  
To View  
Brief Video



**New Office Unit - 2201 Oregon St., Oshkosh, WI**

**Lease Rate: \$8.50 sq. ft. NNN**

**Unit Size 1,428 Sq Ft Will Build-Out Floor Plan to Suit Your Needs**

\* On Bus Route, \* Near Oshkosh Post Office \*Southern Industrial District

**Parking:** Paved & Lighted Parking



*Gear Real Estate, Inc.*

Office: 920.426.0417

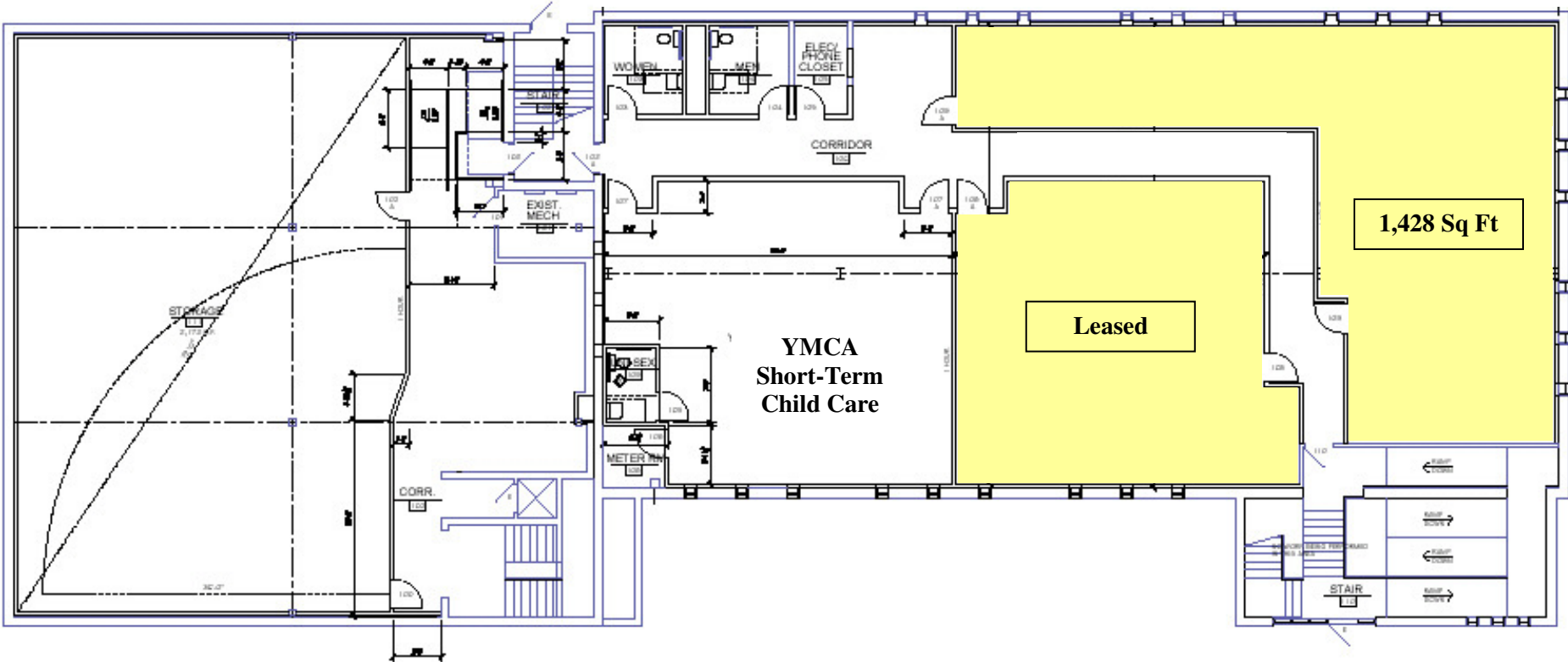
COMMERCIAL & INDUSTRIAL

Web Site: [www.GEarRealEstate.com](http://www.GEarRealEstate.com)

Email: [ge@gebroker.com](mailto:ge@gebroker.com)

Information contained herein is taken from sources deemed reliable but is not guaranteed and is subject to change.

# Landlord will Create a Floor Plan that Suits Your Needs



## On-Site Parking

