

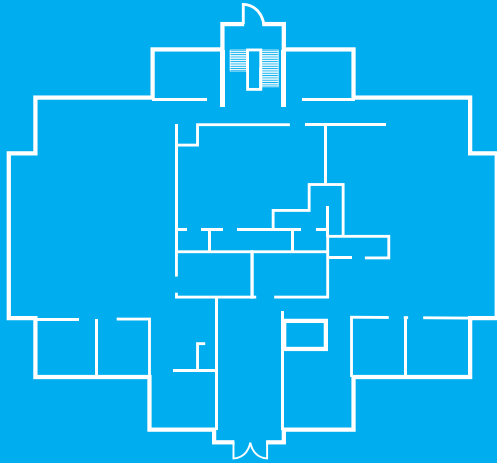


COUNTRY CLUB COURT

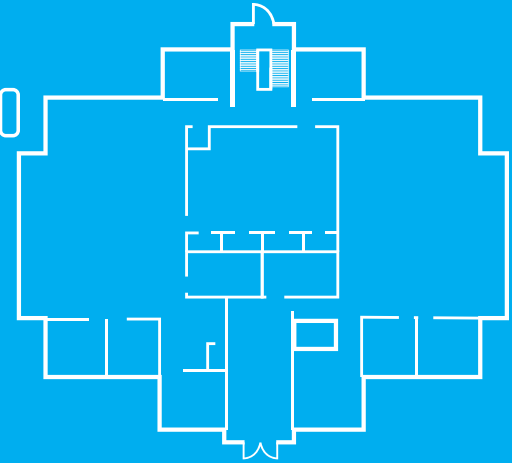
2483 N CANYON RD | PROVO

FOR SALE

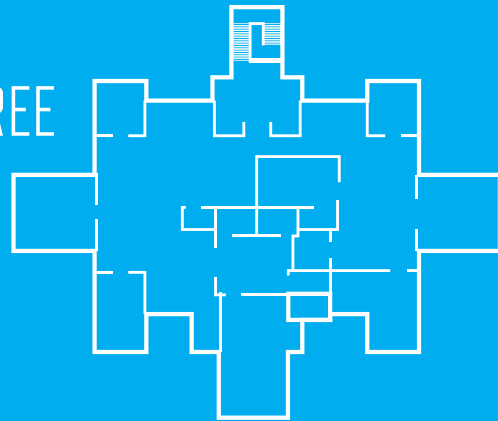
FLOOR ONE
7113SF



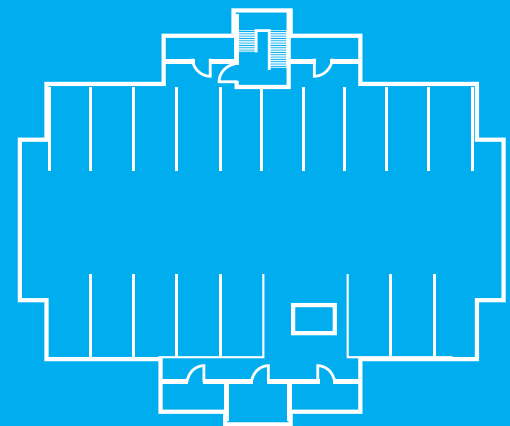
FLOOR TWO
7113SF

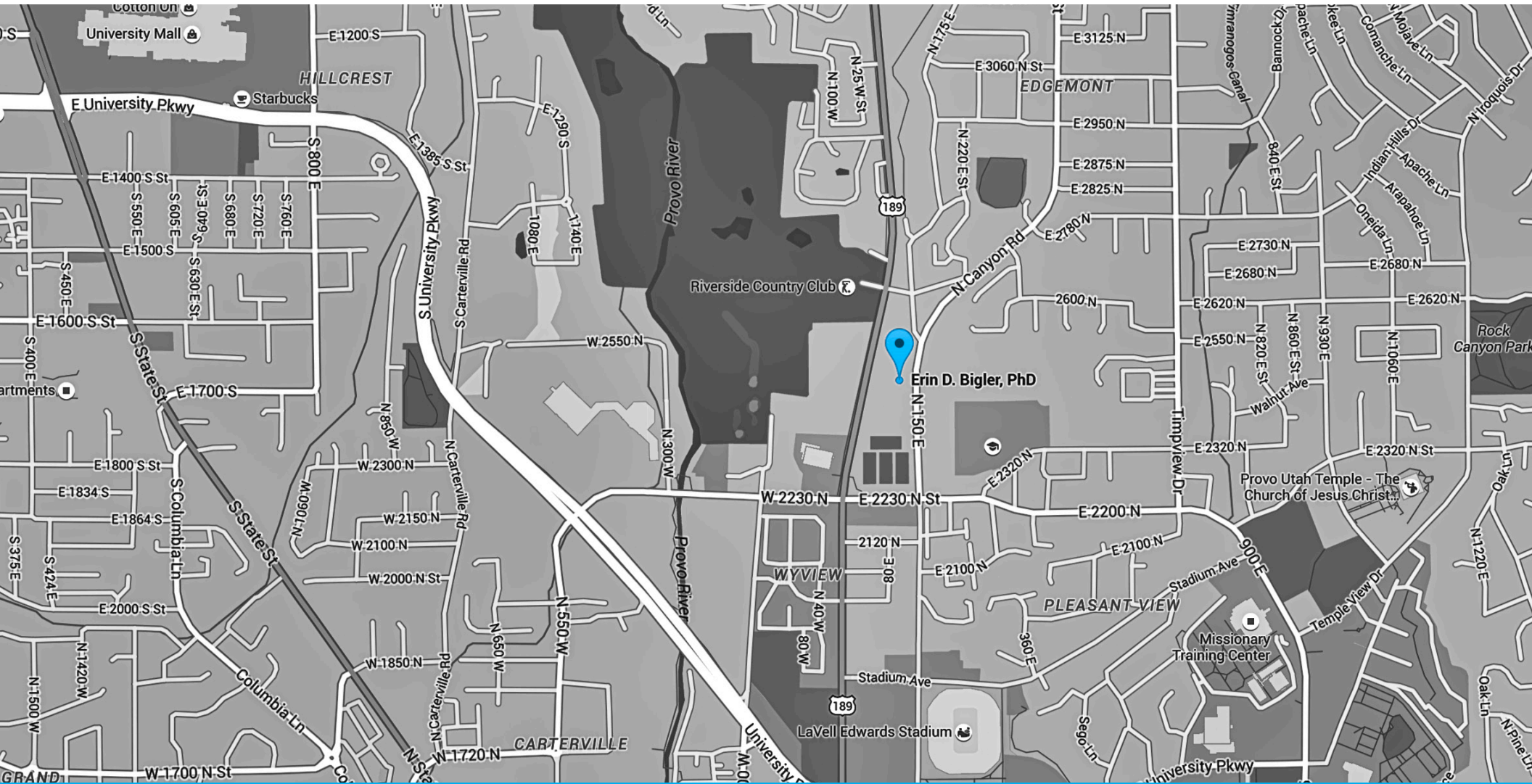


FLOOR THREE
4728SF



GARAGE





Prime location located between University Ave and Canyon Rd. in Provo
across from the Riverside Country Club and just minutes from BYU.



COUNTRY CLUB COURT

2483 N CANYON RD | PROVO

The professional appeal of this building includes:

- » 95 parking spaces with an underground parking garage
- » 18 Covered parking stalls and 5 storage units
- » Men's and women's bathrooms on all 3 floors
- » Prime location across from the riverside country club and just minutes from byu.
- » Property is currently vacant and ready to occupy.
- » New carpet & new paint
- » Sale Price: \$1,990,000
- » Building Size 18,954 SF
- » CAMs \$2.40/sqft/year
- » Square footage per county records

ERIC WOODLEY | MANAGING PARTNER

801.362.7848 | ERIC@WOODLEY.CO