

# FOR SALE



## THE OFFICE PARK AT EBERLY FARM

13205 W 21st St. Wichita, KS 67235

### PROPERTY INFO



#### SPACE AVAILABLE

- 3,241 - 7,090 SF - Divisible
- 3,241 SF - Built Out
  - 3,849 SF - Shell



#### SALE PRICE

\$1,375,000



#### LEASE RATE

\$12.50 - \$20.00 SF



#### LEASE TYPE

NNN



#### HIGHLIGHTS

- Premier Northwest Wichita location
- Abundant drive up parking
- Flexible floor plans
- Private entrances
- Custom turnkey finish available
- Natural setting with extensive landscaping and scenic views
- Perfect location for financial, medical and general office uses

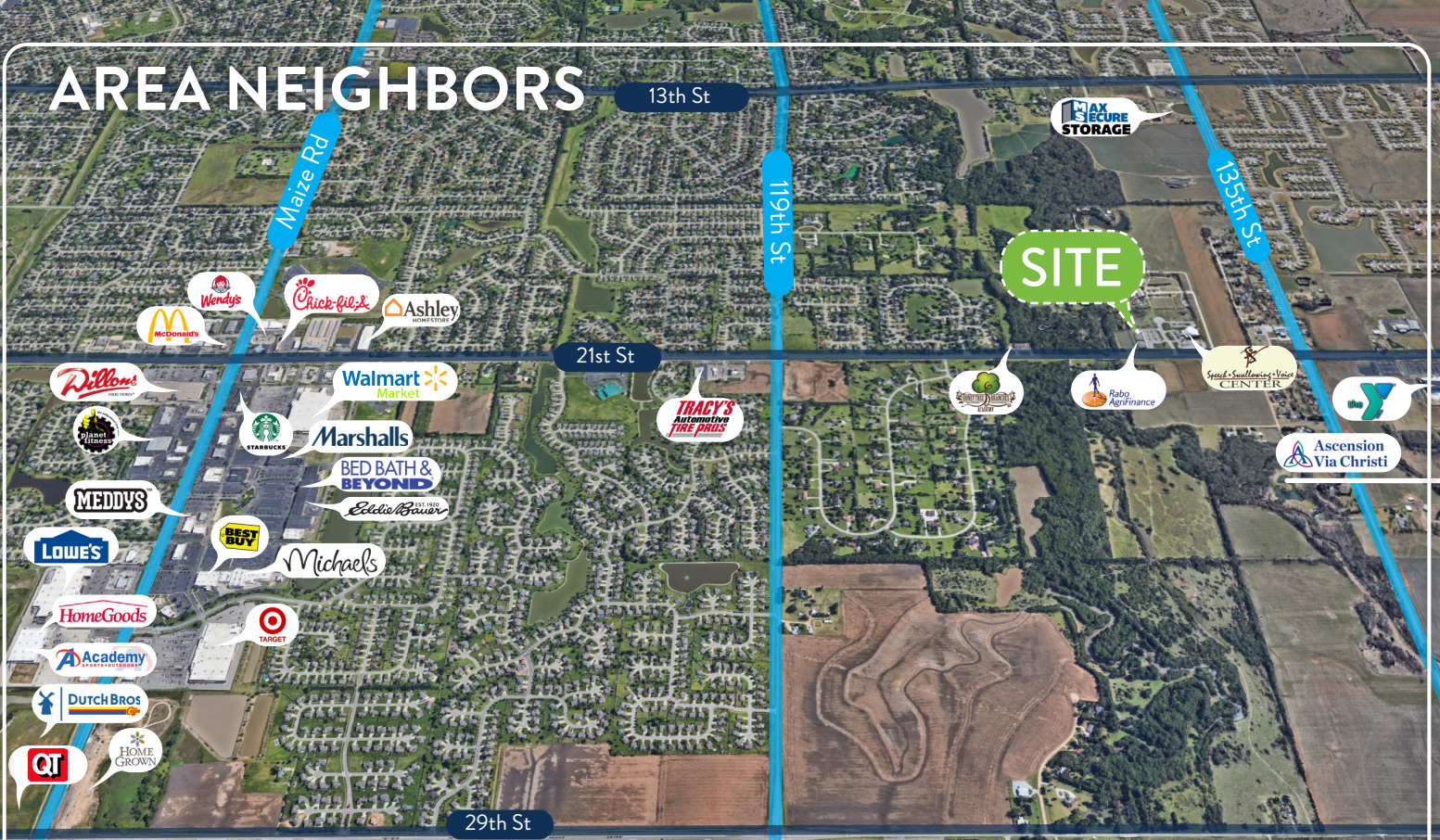
### CONTACT

**COLBY REYNOLDS** | M 316-558-2292 | [colby@insitere.com](mailto:colby@insitere.com)

**InSite**  
REAL • ESTATE • GROUP

608 W DOUGLAS AVE, WICHITA KS  
[INSITERE.COM](http://INSITERE.COM) | 316-618-1100

# AREA NEIGHBORS



## AREA NEIGHBORS

- Rabo AgriFinance
- Speech Swallowing & Voice Center
- Northwest YMCA
- Ascension Via Christi St. Teresa
- Tracy's Automotive Tire Pros
- Dutch Bros Coffee
- Christian Brothers Automotive
- QuikTrip
- Target
- HomeGrown
- Hobby Lobby
- Bed Bath & Beyond
- Best Buy
- Planet Fitness
- Marshalls
- Dutch Bros Coffee
- Walmart Supercenter
- Chick-fil-A
- Starbucks
- Dillons
- McDonald's
- Wendy's
- Lowe's

## DEMOGRAPHICS

3 mile radius

## AVG. HOUSEHOLD INCOME

\$107,404

## DAYTIME POPULATION

35,786

## NO. OF BUSINESSES

3,653



[VIDEO LINK CLICK HERE](#)

# FLOOR PLAN

