



MOUNTAIN WEST
COMMERCIAL REAL ESTATE



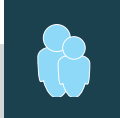


CENTRAL OREM OFFICE/WAREHOUSE

717 NORTH 1500 WEST • OREM • UTAH • 84057

FOR LEASE

PROPERTY SPECS

- 5,700 SF Office Warehouse
 - » 5,175 SF Warehouse
 - » 525 SF Office
- 18-foot clear height
- 2 overhead doors (12' X 12')
- Immediate I-15 access at 800 North, Orem
- Lease Rate: 90 cents PSF blended rate NNN
- Available November 1st

			
1 MILE	18,668 2021 EST. POPULATION	6,021 2021 EST. HOUSEHOLDS	\$74,991 2021 EST. MEDIAN HH INCOME
3 MILE	106,816 2021 EST. POPULATION	33,192 2021 EST. HOUSEHOLDS	\$77,746 2021 EST. MEDIAN HH INCOME
5 MILE	188,256 2021 EST. POPULATION	58,698 2021 EST. HOUSEHOLDS	\$76,781 2021 EST. MEDIAN HH INCOME

CONTACT:

BILL STREET

bstreet@mtwest.com
direct 801.376.5282
[View Profile](#)

MARY STREET, CCIM

mstreet@mtwest.com
direct 801.358.6279
[View Profile](#)

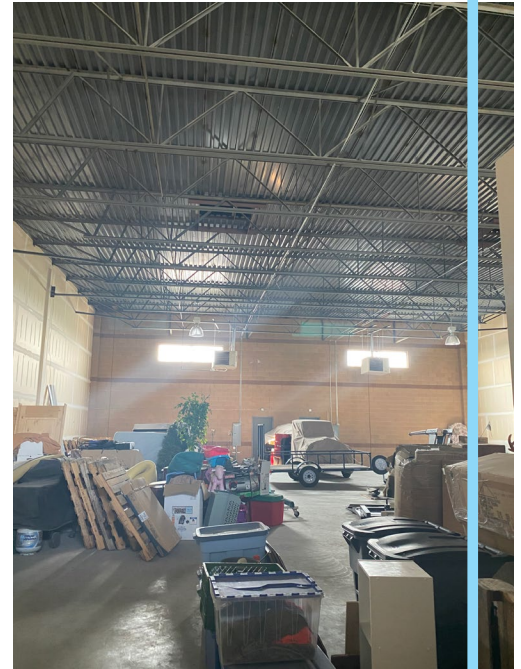
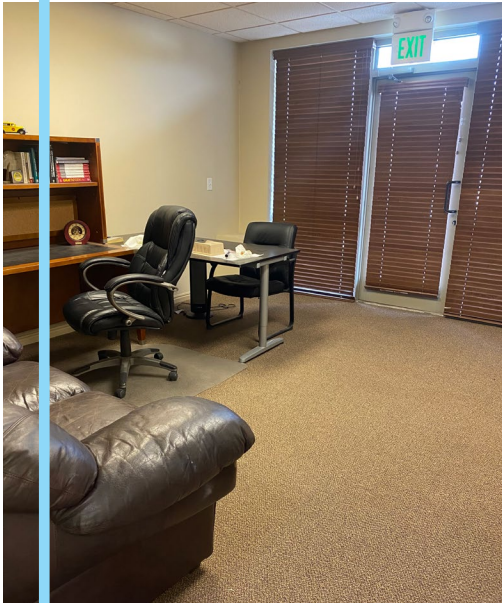
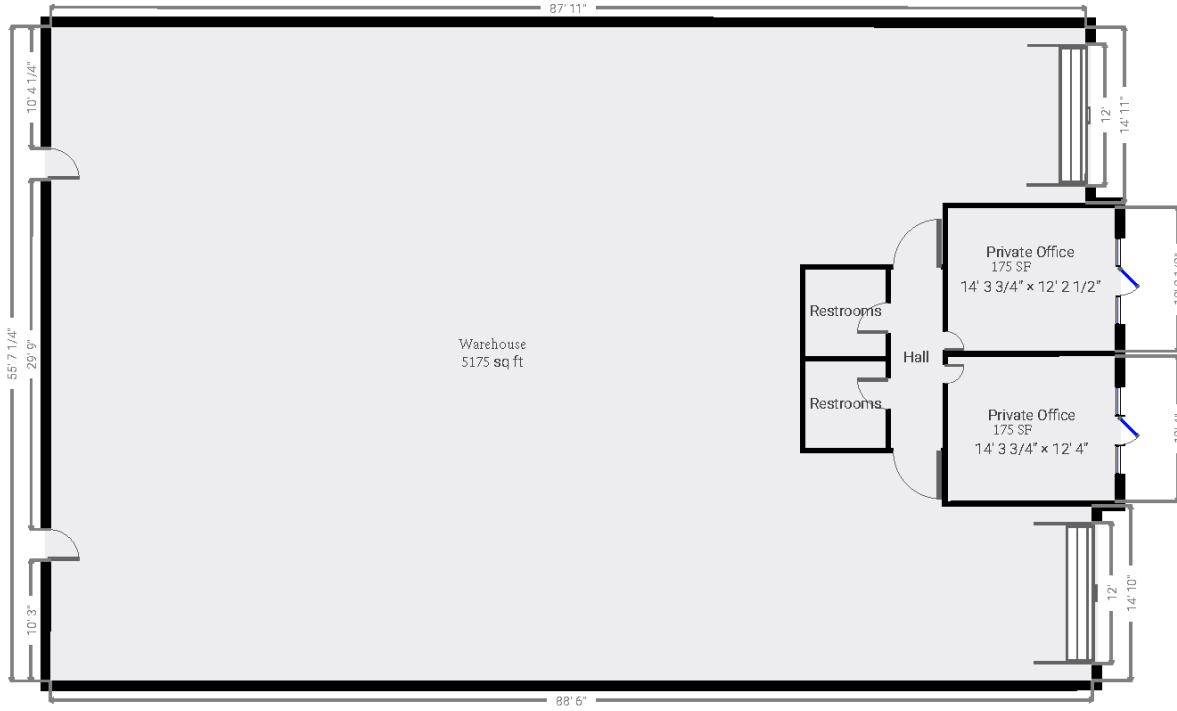
NIC WOODS

nwoods@mtwest.com
direct 801.719.4309
[View Profile](#)



RETAIL - INVESTMENT - INDUSTRIAL - LAND - OFFICE - URBAN - MULTIFAMILY - HOSPITALITY

CENTRAL OREM OFFICE/WAREHOUSE



CONTACT:

BILL STREET

bstreet@mtwest.com
direct 801.376.5282
[View Profile](#)

MARY STREET, CCIM

mstreet@mtwest.com
direct 801.358.6279
[View Profile](#)

NIC WOODS

nwoods@mtwest.com
direct 801.719.4309
[View Profile](#)

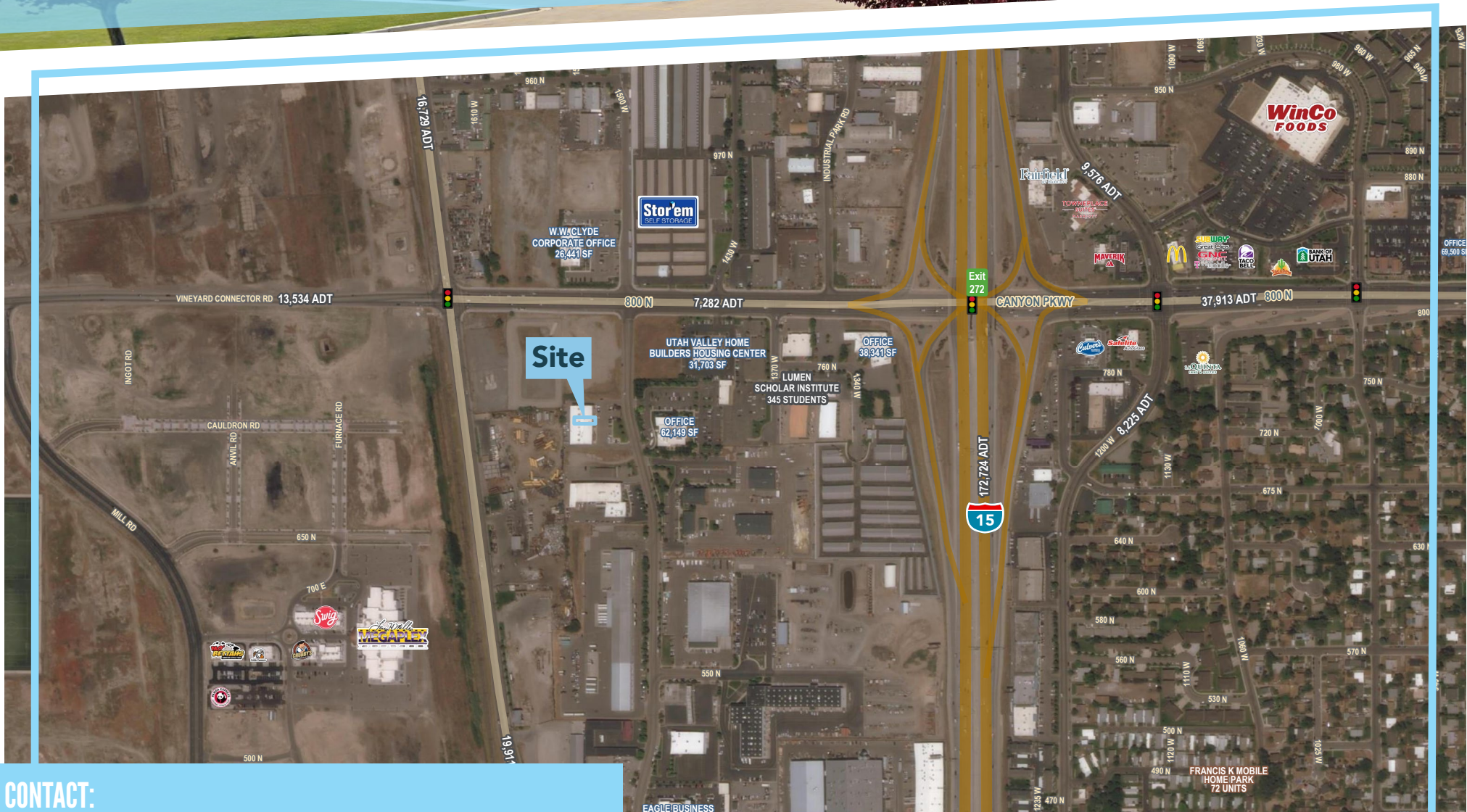


RETAIL - INVESTMENT - INDUSTRIAL - LAND - OFFICE - URBAN - MULTIFAMILY - HOSPITALITY

2015 W. Grove Pkwy, Suite J | Pleasant Grove, UT 84062 | Office 385.233.9140 | www.mtnwest.com

This statement with the information it contains is given with the understanding that all negotiations relating to the purchase, renting or leasing of the property described above shall be conducted through this office. The above information while not guaranteed has been secured from sources we believe to be reliable.

CENTRAL OREM OFFICE/WAREHOUSE



CONTACT:

BILL STREET

bstreet@mtwest.com
direct 801.376.5282
[View Profile](#)

MARY STREET, CCIM

mstreet@mtwest.com
direct 801.358.6279
[View Profile](#)

NIC WOODS

nwoods@mtwest.com
direct 801.719.4309
[View Profile](#)

